

# MSE RETAINING WALL

## STA 108+22.00 - 111+99.14

### SINKS CANYON ROAD

### LANDER SOUTH SECTION

0701003

FREMONT COUNTY

DESIGN DATA

SPECIFICATIONS: AASHTO LRFD Bridge Design Specifications, 8th Edition.

RETAINING WALL DESIGN DATA								
Foundation Material				Retained Soil		Reinforced Backfill Material		
Φ	μ	γ	q <sub>R</sub>	q <sub>max</sub>	Φ	γ	Φ	γ
34°	0.68	124 pcf	0.0 tsf	0.0 tsf	34°	124 pcf	34°	124 pcf

REFERENCES

Special Provisions:  
SP-500CW Precast Wall Component System

ESTIMATED QUANTITIES				
ITEM NO.	ITEM	UNIT	TOTAL QUANTITY	ESTIMATE
209.01000	WATER	MG	32	
301.01020	CRUSHER RUN SUBBASE	TON	4771	
599.00002	PRECAST WALL COMPONENT SYSTEM	SF	459	
605.10004	UNDERDRAIN PIPE (PERF) 4 in	FT	382	
605.20004	UNDERDRAIN PIPE (NON-PERF) 4 in	FT	32	

GENERAL NOTES

SPECIFICATIONS: WYDOT Standard Specifications for Road and Bridge Construction, 2010 Edition.

DIMENSIONS: Longitudinal dimensions are horizontal and include no correction for grade. Slopes are vertical : horizontal.

UNCLASSIFIED EXCAVATION: The estimated quantity of unclassified excavation is calculated below existing ground line to the limits shown. See road plans for quantity.

MOISTURE AND DENSITY CONTROL: Compact the bottom limits of unclassified in accordance with Subsection 203.4.3, Embankment and Cut Areas with Moisture and Density Control.

GEOTEXTILE, DRAINAGE AND FILTRATION: Work necessary for the geotextile, drainage and filtration is incidental to the contract pay item Underdrain Pipe (Perf) 4 in.

GRAVEL FOR DRAINS: Work necessary for the gravel for drains is incidental to the contract pay item Underdrain Pipe (Perf) 4 in.

CRUSHED BASE: Use crushed base conforming to grading W from a contractor furnished source. Compact the crushed base in accordance with Subsection 301.4.2.3, Placing. Work necessary for the crushed base is incidental to the contract pay item Precast Wall Component System.

WATER: The estimated quantity of water for compaction of crushed base is 0.014 MG per ton.

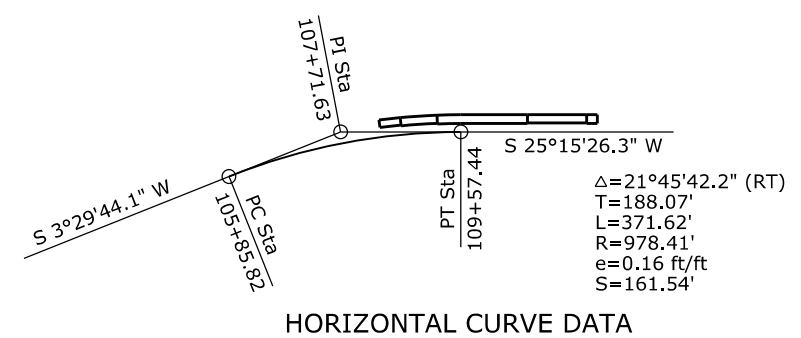
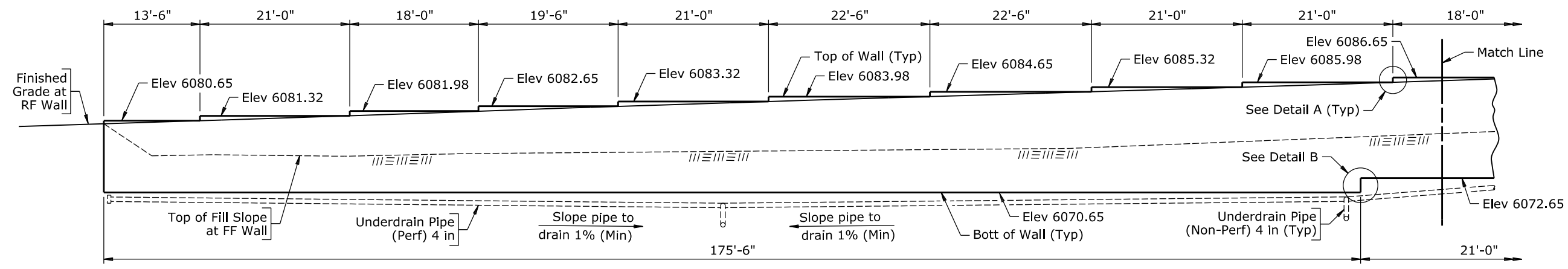
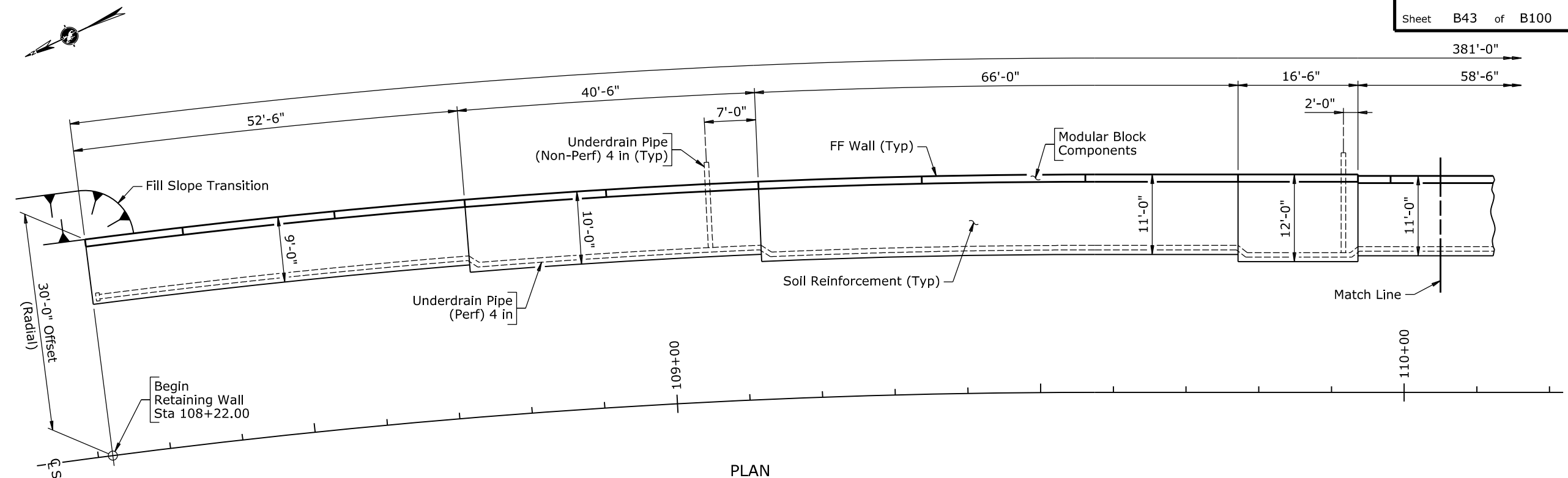
STRUCTURE NO. M-LKD-W  
ML701B, RM 7.44 SEC 21, T32N, R99W

WYOMING DEPARTMENT OF TRANSPORTATION BRIDGE PROGRAM REVISIONS			
REVIEW _____	DESIGN _____	Design Section L M Nop	
APPROVAL _____	DETAIL <u>AAA</u> ✓ <u>EEE</u>	Drwg No. 0019 Sheet 1 of 4	
	QTY'S _____		

Nov 2018

4.21 - Example

Wyo. Proj. 0701003  
 Sheet B43 of B100 Sheets



Note: 1) Offset and longitudinal dimensions are based on front face of wall at elevation 6070.65.  
 2) Top of wall elevations do not include correction for soil reinforcement thickness.  
 3) For Fill Slope Transition Detail, Detail A and Detail B, see Sheet No. 4.

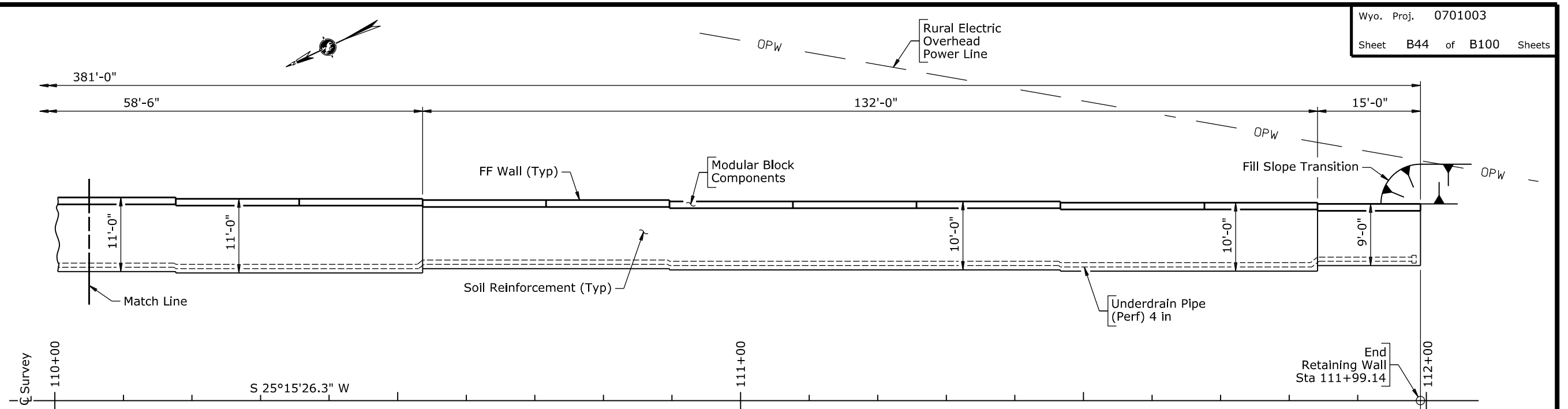
WYOMING DEPARTMENT OF TRANSPORTATION BRIDGE PROGRAM			
GENERAL PLAN AND ELEVATION			
MSE RETAINING WALL			
STA 108+22.00 - STA 111+99.14			
Sinks Canyon Road			
Lander South Section			
0701003		Fr	
DESIGN	EEE ✓ DDD	Design Section	L M Nop
DETAIL	AAA ✓ EEE	Drwg No.	0019
QTY'S	BBB ✓ FFF	Sheet	2 of 4

Section 4.21 - Earth Retaining Structures

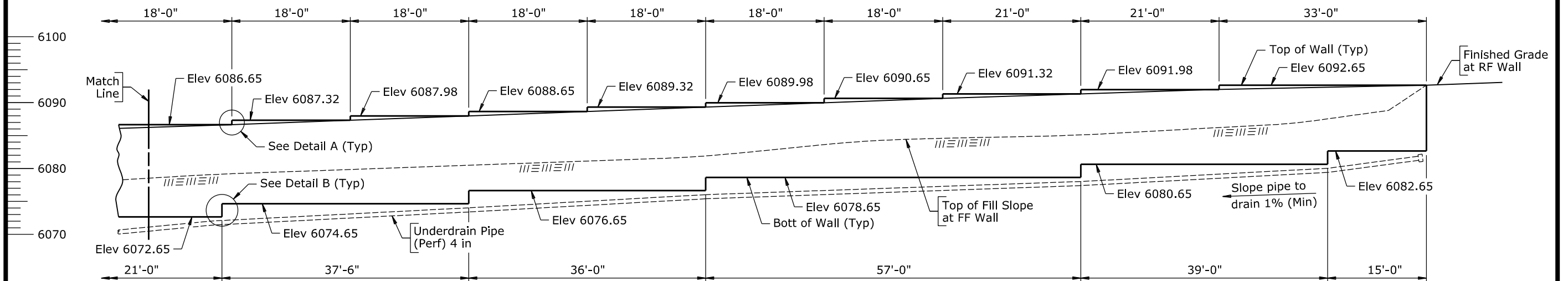
Nov 2018

4.21 - Example

Wyo. Proj. 0701003  
Sheet B44 of B100 Sheets



PLAN



ELEVATION  
(Capstones and crushed base not shown)

- Note:**
- 1) Longitudinal dimensions are based on front face of wall at elevation 6070.65.
  - 2) Top of wall elevations do not include correction for soil reinforcement thickness.
  - 3) For Fill Slope Transition Detail, Detail A and Detail B, see Sheet No. 4.

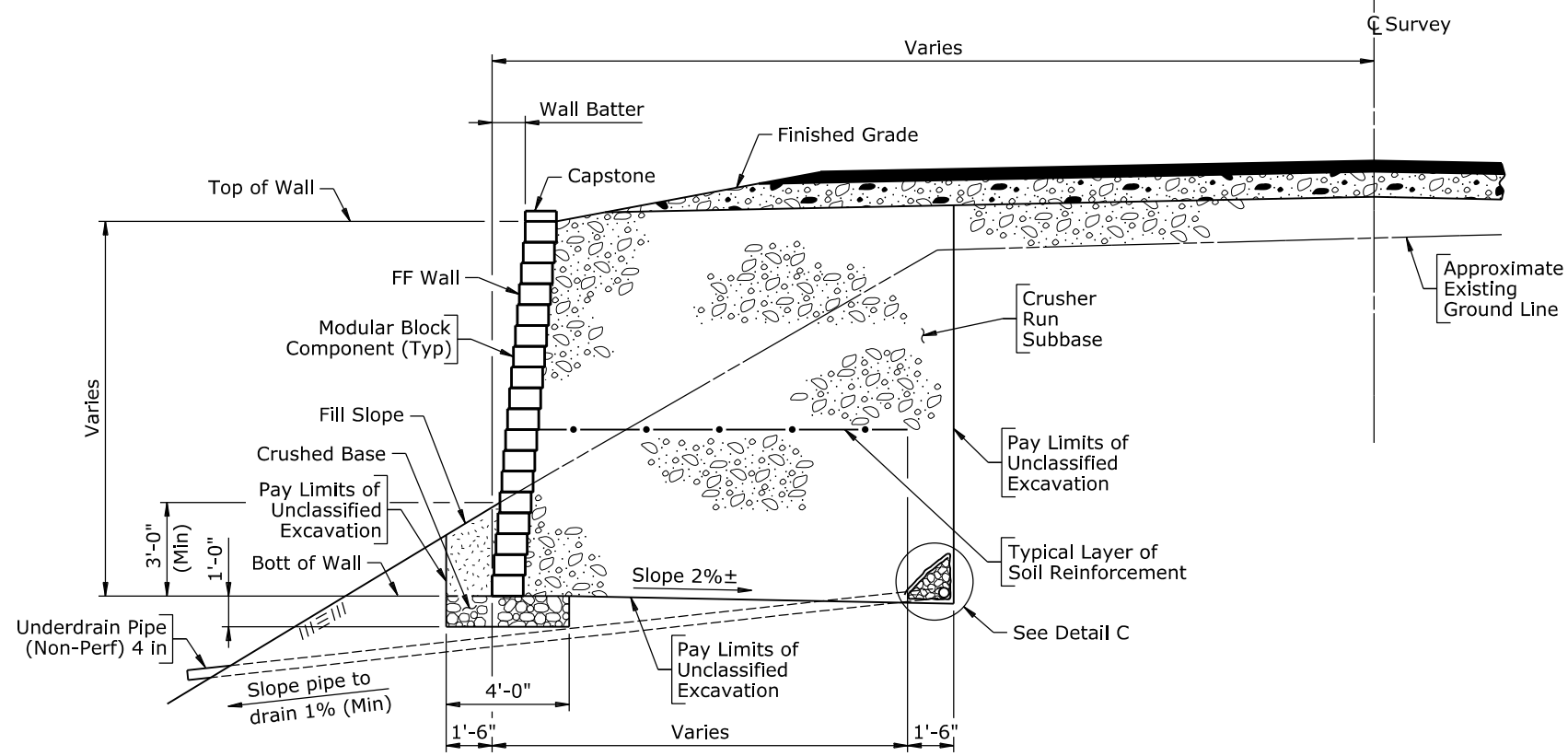
WYOMING DEPARTMENT OF TRANSPORTATION BRIDGE PROGRAM			
GENERAL PLAN AND ELEVATION			
MSE RETAINING WALL			
STA 108+22.00 - STA 111+99.14			
Sinks Canyon Road			
Lander South Section			
0701003		Fr	
DESIGN	EEE ✓ DDD	Design Section	L M Nop
DETAIL	AAA ✓ EEE	Drwg No.	0019
QTY'S	BBB ✓ FFF	Sheet	3 of 4

Section 4.21 - Earth Retaining Structures

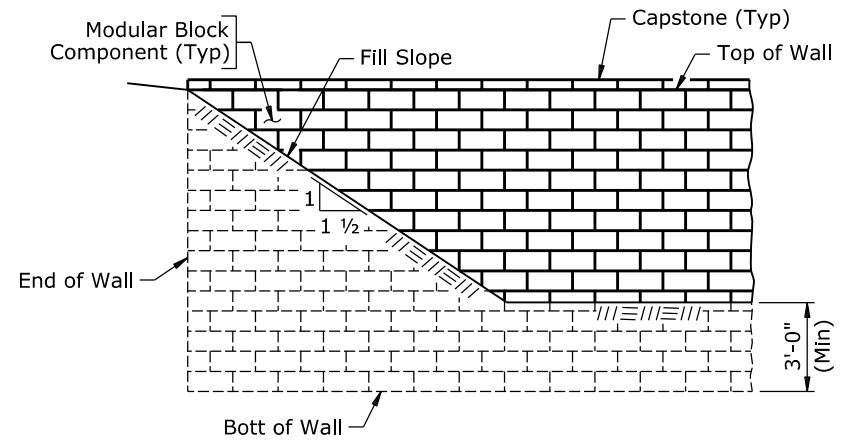
Nov 2018

4.21 - Example

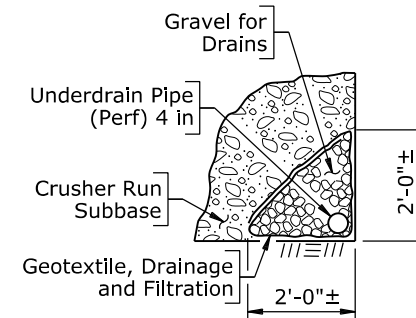
Wyo. Proj. 0701003  
 Sheet B45 of B100 Sheets



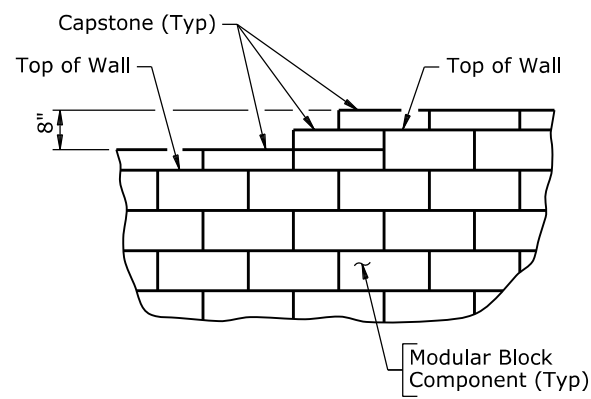
TYPICAL SECTION



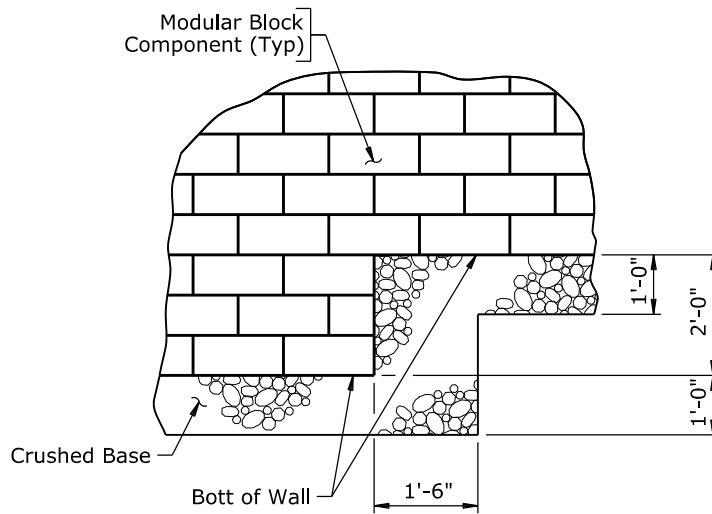
FILL SLOPE TRANSITION DETAIL  
 (Looking at front face wall)



DETAIL C



DETAIL A



DETAIL B

Note: For locations of Fill Slope Transition Detail, Detail A and Detail B, see Sheets No. 2 and 3.

WYOMING DEPARTMENT OF TRANSPORTATION BRIDGE PROGRAM			
RETAINING WALL DETAILS			
MSE RETAINING WALL			
STA 108+22.00 - STA 111+99.14			
Sinks Canyon Road			
Lander South Section			
0701003			Fr
DESIGN	EEE ✓	DDD	Design Section L M Nop
DETAIL	AAA ✓	EEE	
APPROVAL	BBB ✓	FFF	Drwg No. 0019 Sheet 4 of 4

Section 4.21 - Earth Retaining Structures