

MSE RETAINING WALL

STA 108+22.00 - STA 111+99.14

SINKS CANYON ROAD

LANDER SOUTH SECTION

0701003

FREMONT COUNTY

DESIGN DATA

SPECIFICATIONS: AASHTO LRFD Bridge Design Specifications, 4th Edition

RETAINING WALL DESIGN DATA							
Foundation Material				Retained Soil		Reinforced Backfill Material	
φ	μ	γ	q _{all}	φ	γ	φ	γ
34°	0.68	124 pcf	1.0 tsf	34°	124 pcf	34°	124 pcf

REFERENCES

Special Provisions: SP-500CW Precast Wall Component System ----- Dated 8-2-07

ESTIMATED QUANTITIES

ITEM NO.	ITEM	UNIT	TOTAL QUANTITY
209.01000	WATER	MG	32
301.01020	CRUSHER RUN SUBBASE	TON	4771
599.00002	PRECAST WALL COMPONENT SYSTEM	SF	459
605.10004	UNDERDRAIN PIPE (PERF) 4 in	FT	382
605.20004	UNDERDRAIN PIPE (NON-PERF) 4 in	FT	32

GENERAL NOTES

SPECIFICATIONS: WYDOT Standard Specifications for Road and Bridge Construction, 2003 Edition

DIMENSIONS: Longitudinal dimensions are horizontal and include no correction for grade. Slopes are vertical : horizontal.

UNCLASSIFIED EXCAVATION: The estimated quantity of unclassified excavation is calculated below the existing ground line to the limits shown. See road plans for quantity.

CRUSHED BASE: Use crushed base conforming to Grading W. Work necessary for the crushed base is incidental to the contract pay item Precast Wall Component System.

MOISTURE AND DENSITY CONTROL: Compact the bottom limits of unclassified excavation in accordance with Subsection 203.4.3 - Embankment and Cut Areas with Moisture and Density Control.

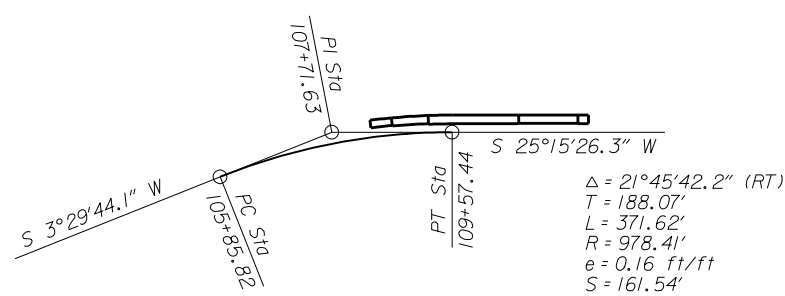
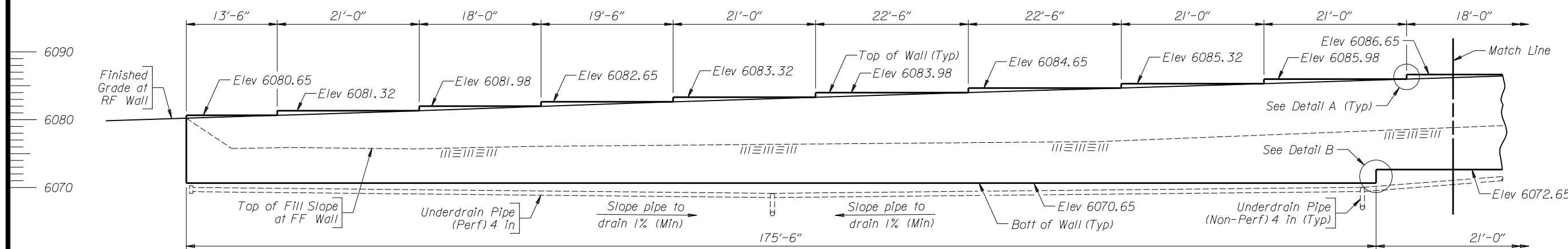
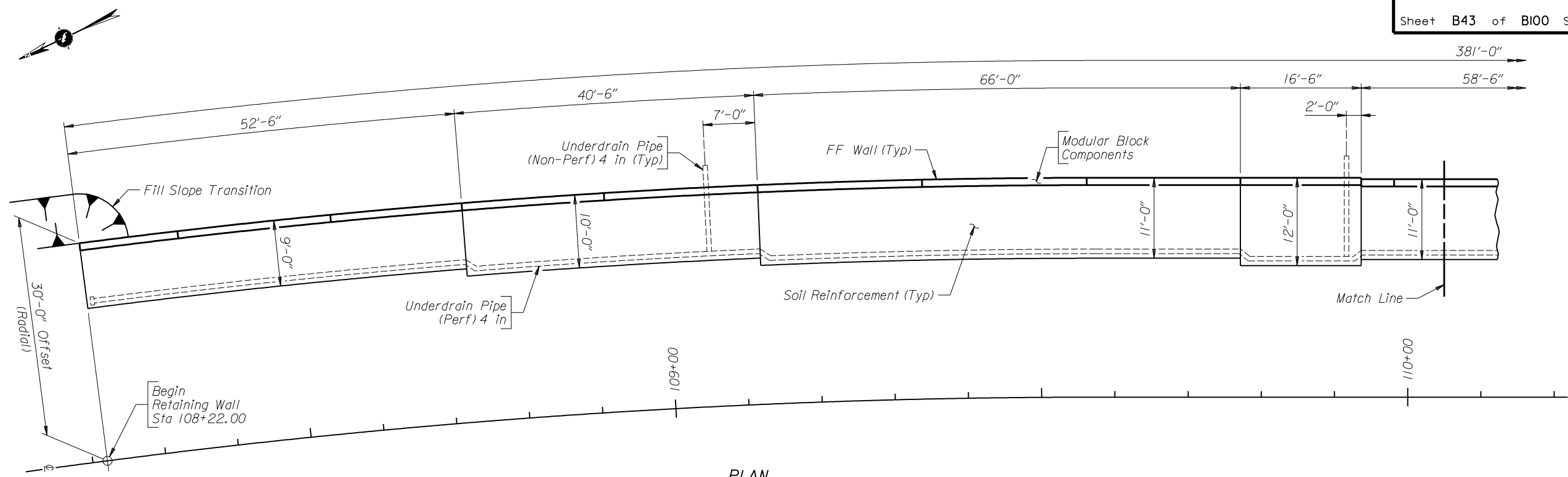
GEOTEXTILE, DRAINAGE AND FILTRATION: Work necessary for the geotextile, drainage and filtration is incidental to the contract pay item Underdrain Pipe (Perf) 4 in.

GRAVEL FOR DRAINS: Work necessary for the gravel for drains is incidental to the contract pay item Underdrain Pipe (Perf) 4 in.

WATER: Water at 13.6 gallons per ton has been estimated for compaction of the crusher run subbase.

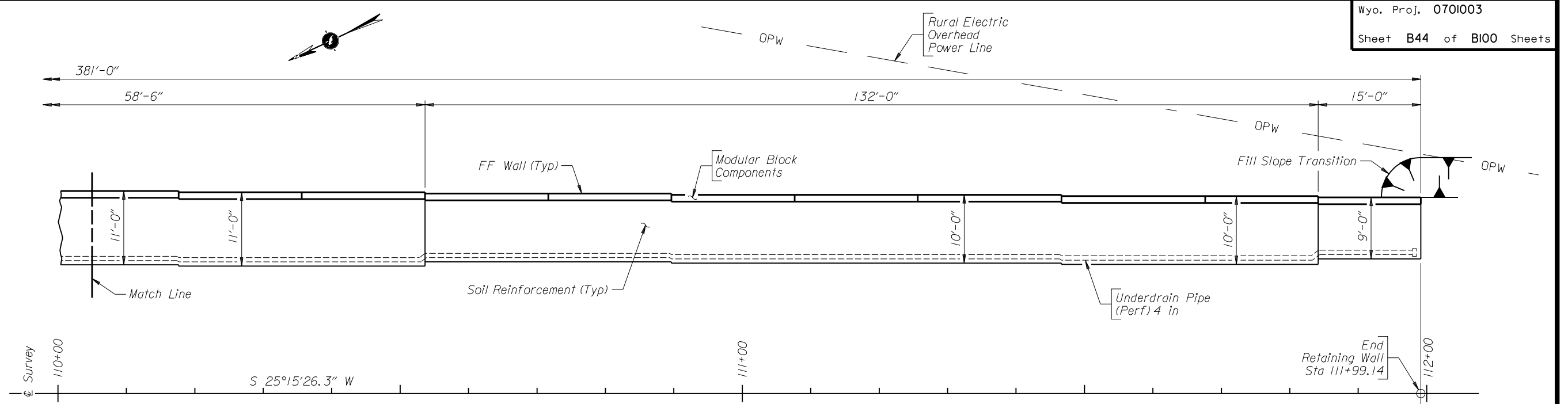
STRUCTURE NO. LKD
ML701B, RM 7.44, SEC 21, T32N, R99W

WYOMING DEPARTMENT OF TRANSPORTATION			
BRIDGE PROGRAM			
REVISIONS			
APPROVED	DESIGN _____ ✓ _____	Design Section L M Nop	
DATE	DETAIL <u>AAA</u> ✓ <u>EEE</u>	Drwg. No. 0019	Sheet 1 of 4
	Q'S. _____ ✓ _____		

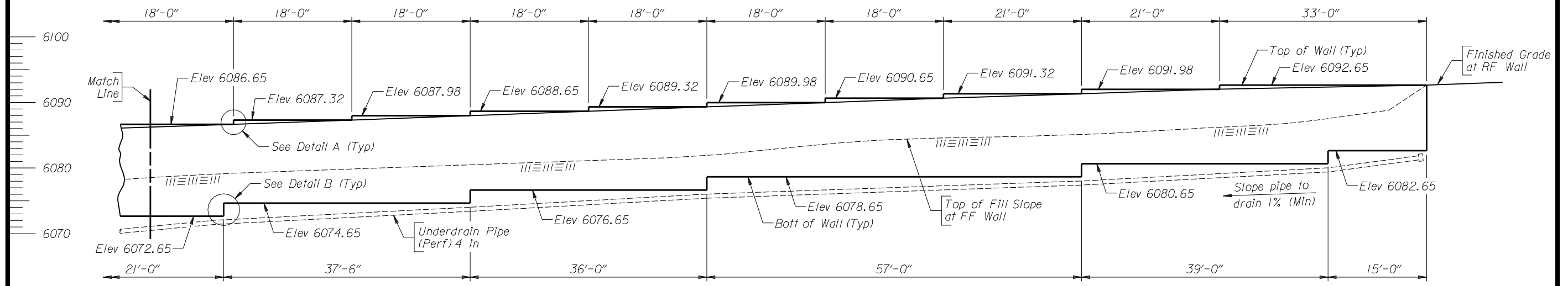


Note: 1) Offset and longitudinal dimensions are based on front face of wall at elevation 6070.65.
2) Top of wall elevations do not include correction for soil reinforcement thickness.
3) For Detail A and Detail B, see Sheet No. 4.

WYOMING DEPARTMENT OF TRANSPORTATION BRIDGE PROGRAM			
GENERAL PLAN AND ELEVATION			
MSE RETAINING WALL			
STA 108+22.00 - STA 110+99.14			
Sinks Canyon Road			
Lander South Section			
0701003			Fr
APPROVED	DESIGN: EEE ✓ DDD	Design Section L M Nop	
DATE	DETAIL: AAA ✓ EEE	Drwg. No. 0019 Sheet 2 of 4	
	Q'S: BBB ✓ FFF		



PLAN

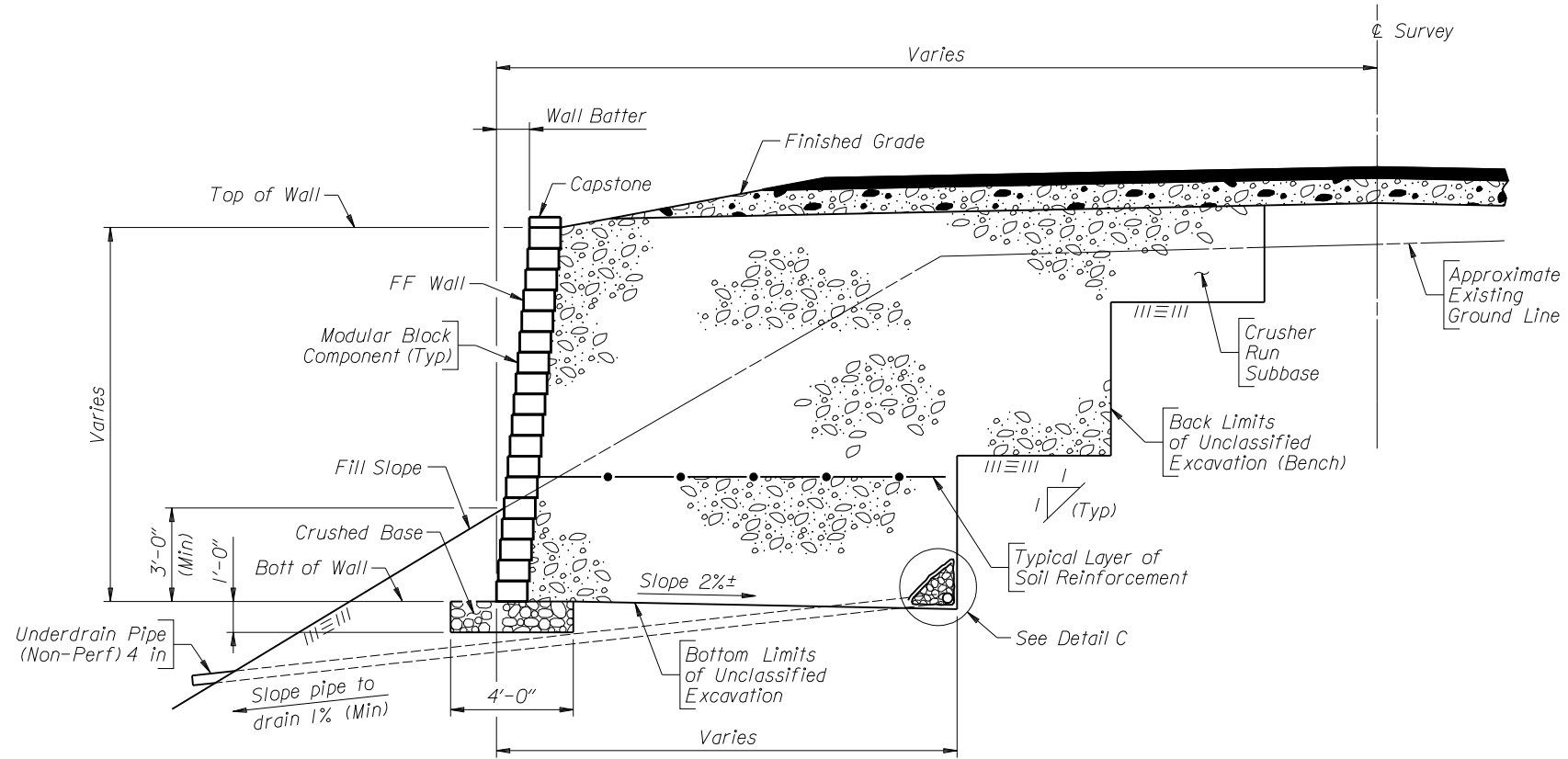


ELEVATION

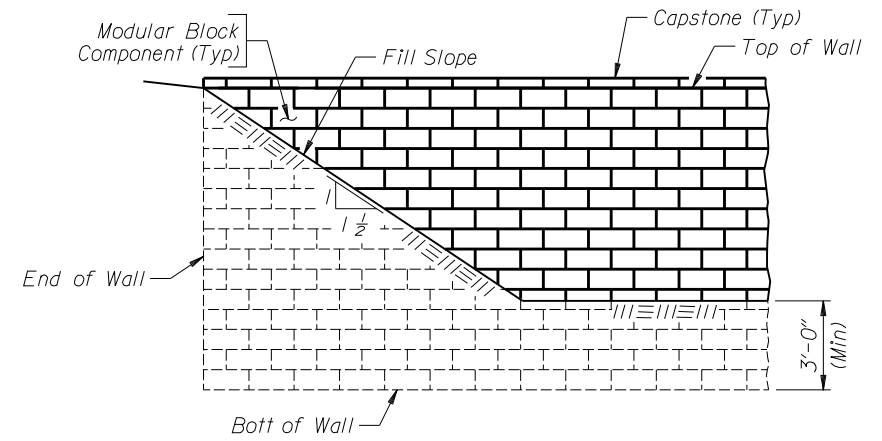
(Capstones and crushed base not shown)

- Note: 1) Longitudinal dimensions are based on front face of wall at elevation 6070.65.
2) Top of wall elevations do not include correction for soil reinforcement thickness.
3) For Detail A and Detail B, see Sheet No. 4.

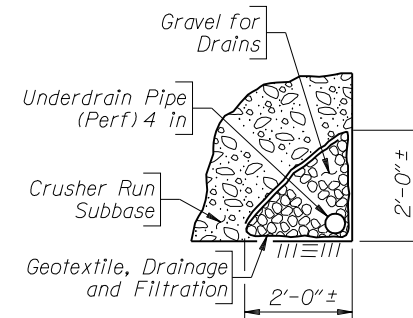
WYOMING DEPARTMENT OF TRANSPORTATION BRIDGE PROGRAM			
REVISIONS		GENERAL PLAN AND ELEVATION	
		MSE RETAINING WALL	
		STA 108+22.00 - STA 111+99.14	
		Sinks Canyon Road	
		Lander South Section	
		0701003 Fr	
APPROVED	DESIGN: EEE ✓ DDD	Design Section L M Nop	
DATE	DETAIL: AAA ✓ EEE	Drwg. No. 0019 Sheet 3 of 4	
	Q'S: BBB ✓ FFF		



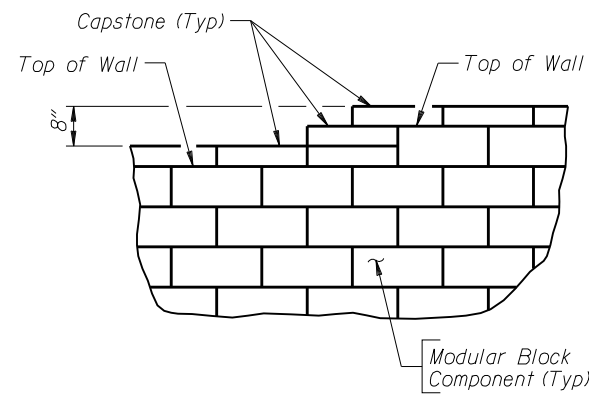
TYPICAL SECTION



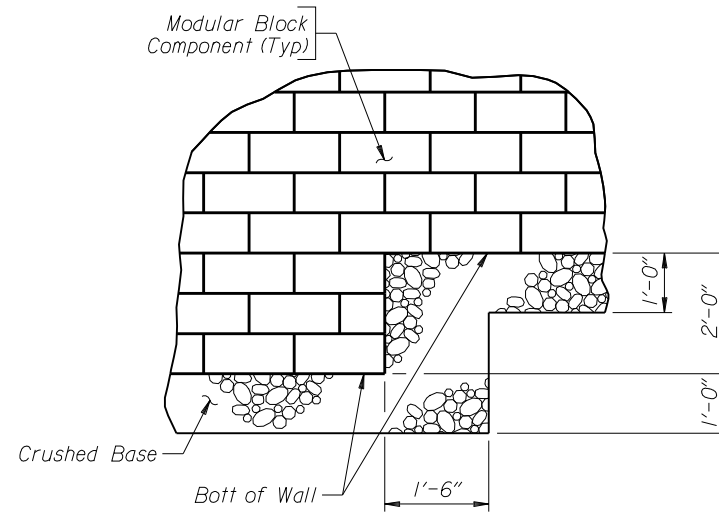
FILL SLOPE TRANSITION DETAIL
(Looking at front face wall)



DETAIL C



DETAIL A



DETAIL B

Note: For locations of Detail A and Detail B, see Sheets No. 2 and 3.

WYOMING DEPARTMENT OF TRANSPORTATION BRIDGE PROGRAM			
RETAINING WALL DETAILS			
MSE RETAINING WALL			
STA 108+22.00 - STA 111+99.14			
Sinks Canyon Road			
Lander South Section			
0701003			Fr
APPROVED	DESIGN: EEE ✓ DDD	Design Section L M Nop	
DATE	DETAIL: AAA ✓ EEE	Drwg. No. 0019	
	Q'S: BBB ✓ FFF	Sheet 4 of 4	