

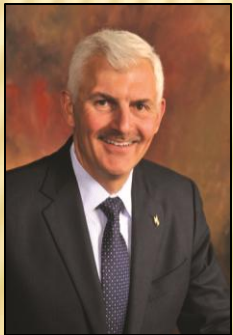


Wyoming Department of Transportation

STATE TRANSPORTATION IMPROVEMENT PLAN (STIP)

WYDOT DISTRICT 3

- Teton County
- Lincoln County
- Sublette County
- Uinta County
- Sweetwater County



TODD SEETON
DISTRICT
COMMISSIONER



JOHN EDDINS
DISTRICT ENGINEER



K. JOHN DOOLEY
DISTRICT
COMMISSIONER



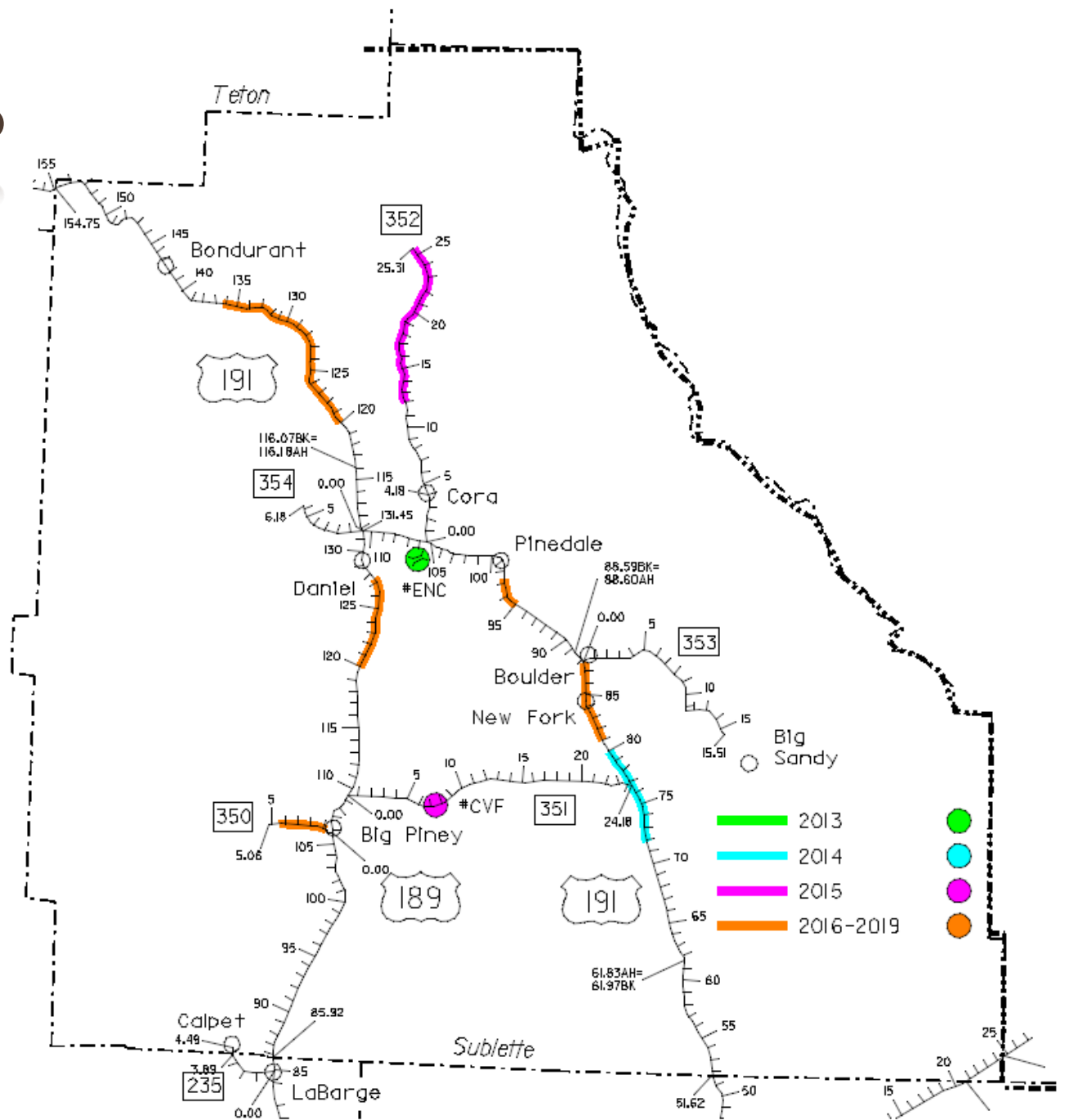
SUBLETTE COUNTY STIP

- 9 major projects are planned in the next seven years.



- Resident Engineer:
Pete Hallsten, 367-4488
WYDOT Pinedale
PO Box 763
Pinedale, WY 82941

SUBLETTE COUNTY STIP



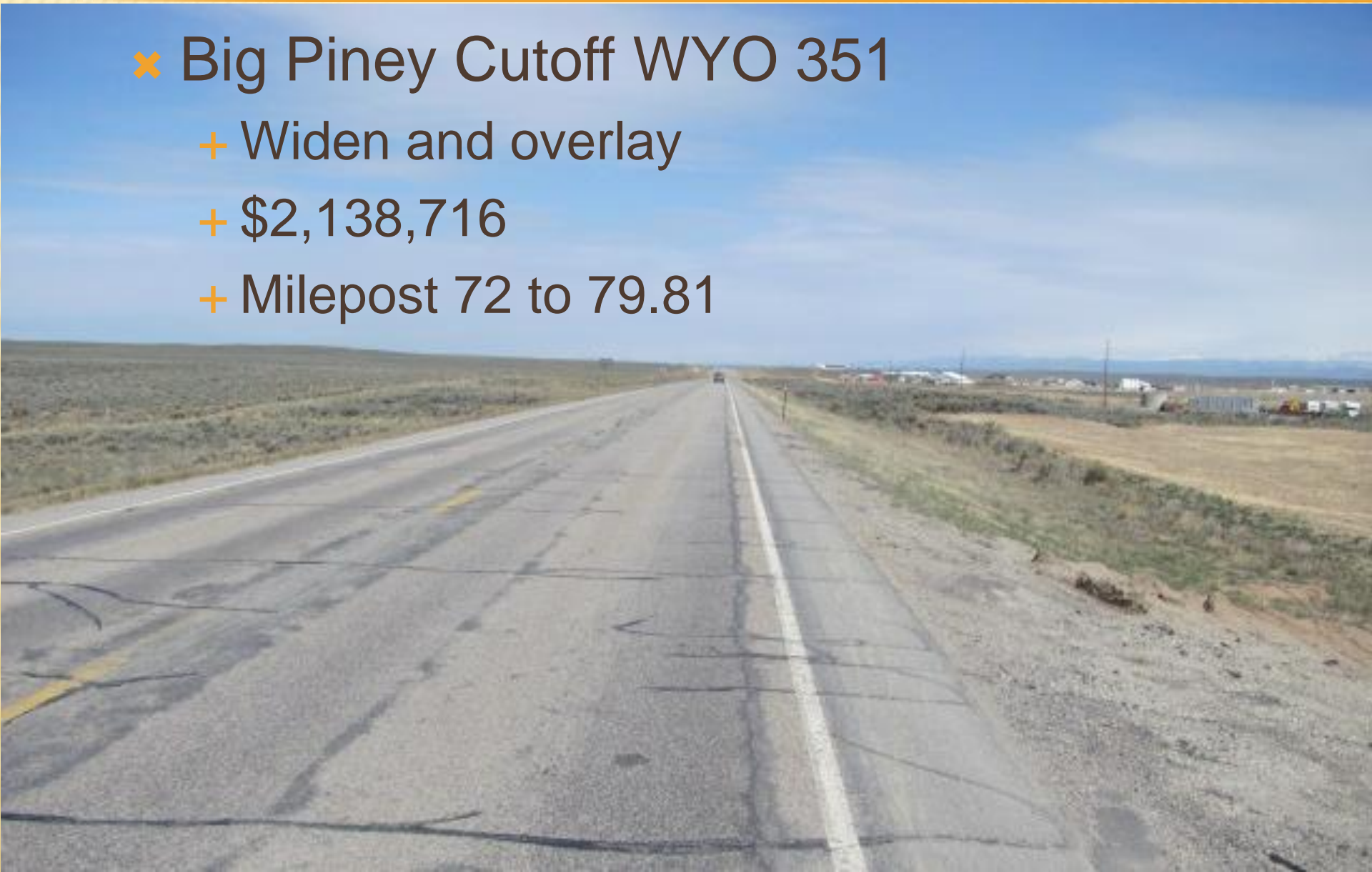
SUBLETTE COUNTY 2013

- ✘ Woods Wardell Road Bridge replacement
 - + BROS funds
 - + \$963,085
 - + County road 23/179



SUBLETTE COUNTY 2014

- ✘ Big Piney Cutoff WYO 351
 - + Widen and overlay
 - + \$2,138,716
 - + Milepost 72 to 79.81



SUBLETTE COUNTY 2015

- ✘ Big Piney cutoff WYO 351
 - + Bridge replacement
 - + \$1,574,948



SUBLETTE COUNTY 2015

✘ Cora Road

+ Right of way fence

+ Milepost 12 to 25.31

+ \$629,526

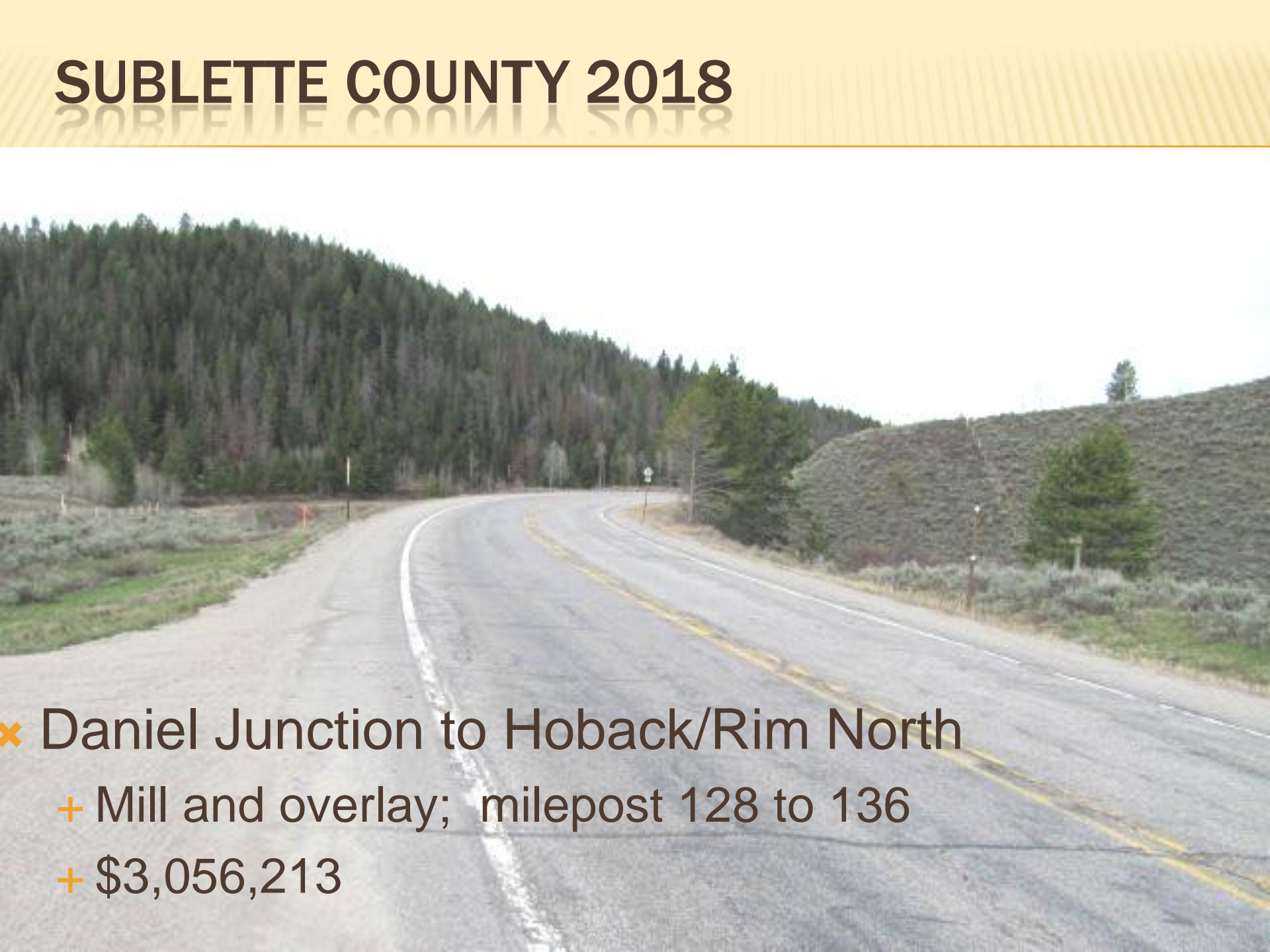


SUBLETTE COUNTY 2017

- ✘ Pinedale to Rock Springs Boulder section
 - + US 191 milepost 81 to 88.21
 - + Widen and overlay
 - + \$2,476, 048

Enhancements
bike/pedestrian pathway
\$440,000

SUBLETTE COUNTY 2018

- 
- ✘ Daniel Junction to Hoback/Rim North
 - + Mill and overlay; milepost 128 to 136
 - + \$3,056,213

SUBLETTE COUNTY 2018

- ✘ Big Piney-Daniel/Cottonwood Creek
 - + Us 189 milepost 120 to 127
 - + Mill and overlay
 - + \$24,709,862

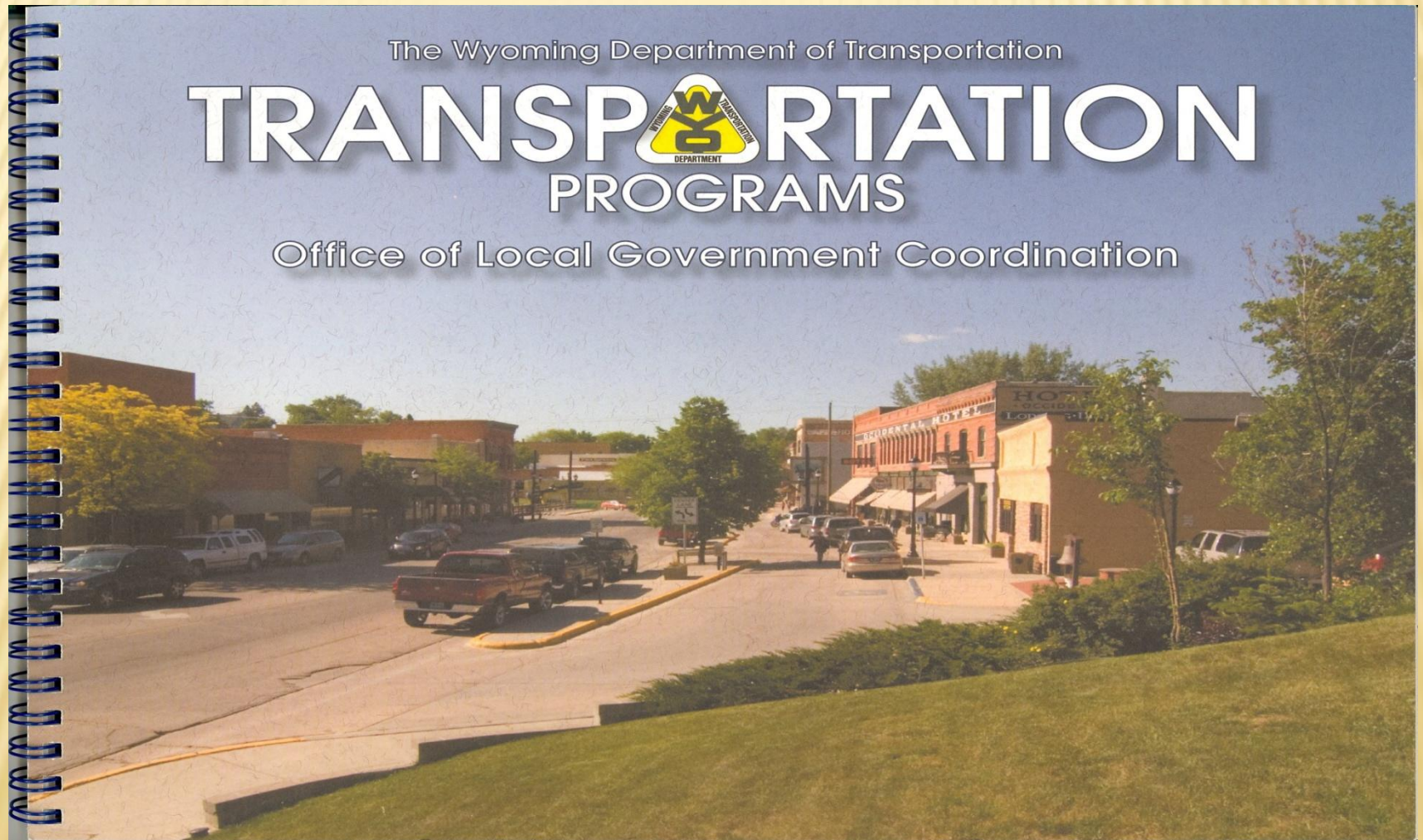


SUBLETTE COUNTY 2019

- ✘ Daniel Junction to Hoback Rim South
 - + Us 189/191 milepost 120-129
 - + Level and overlay
 - + \$4,185,987



LOCAL FUNDING PROGRAMS



The Wyoming Department of Transportation

TRANSPORTATION PROGRAMS

Office of Local Government Coordination

DISTRICT 3 CONTACTS

John Eddins, District Engineer

Ted Wells, District Construction Engineer

Tory Thomas, District Maintenance Engineer

Damon Newsome, District Traffic Engineer

Stephanie Harsha, District Public Relations Specialist

Wyoming Department of Transportation

3200 Elk Street

Rock Springs, WY 82902

307-352-3000