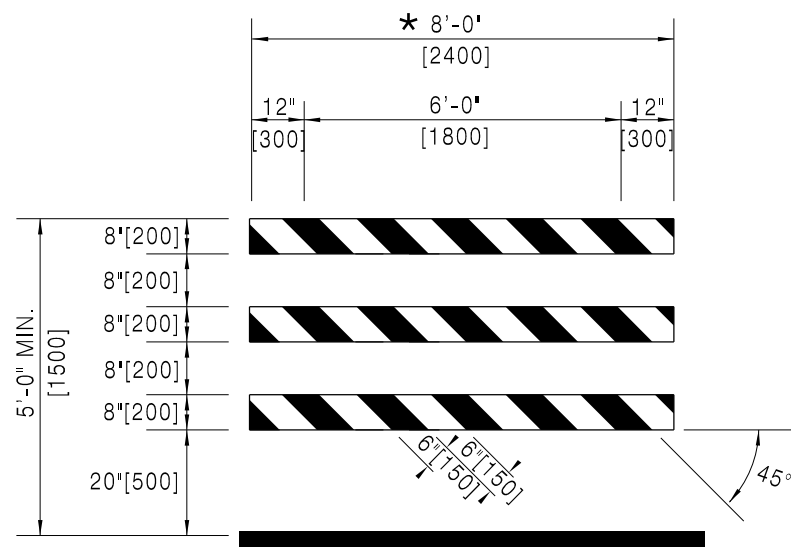


FRONT VIEW

WC-3 BARRICADE

MOUNT SIGNS ON BARRICADES AS SHOWN



FRONT VIEW

WC-4 BARRICADE

NOTES:

1. Slope stripes on WC-3 and WC-4 barricades downward towards the travel way or in the direction which traffic moves when moving by the barricade.
2. Provide supports that are crashworthy in accordance with the Standard Specifications.

* 4' [1200] MINIMUM MAY BE USED ON NON INTERSTATE ROUTES

** 24" [600] MAX SPACING BETWEEN BARRICADES

Designed by: TRAFFIC
 Drawn by: JTG
 Checked by: TRAFFIC
 Previous Dwg. No. 703-1F

WC-3 AND WC-4 BARRICADES

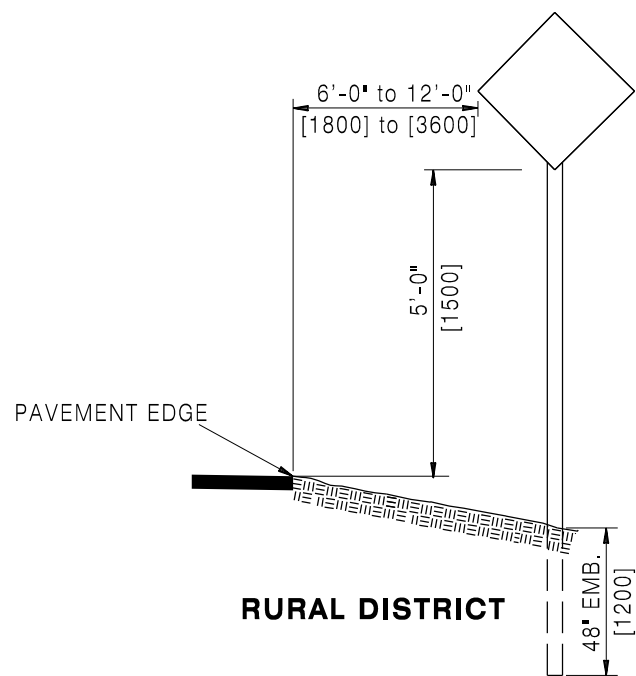
Note: Units shown in brackets [] are metric and are in millimeters (mm) unless other units are shown.



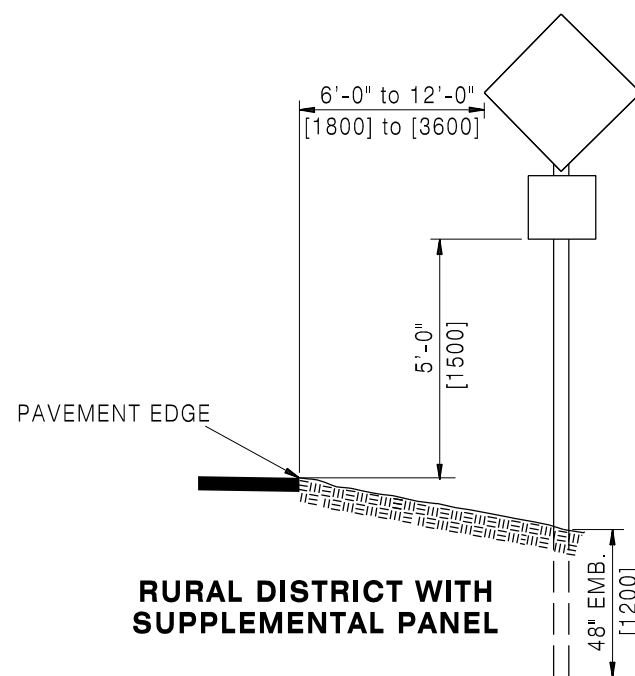
CONSTRUCTION TRAFFIC CONTROL DEVICES

STANDARD PLAN

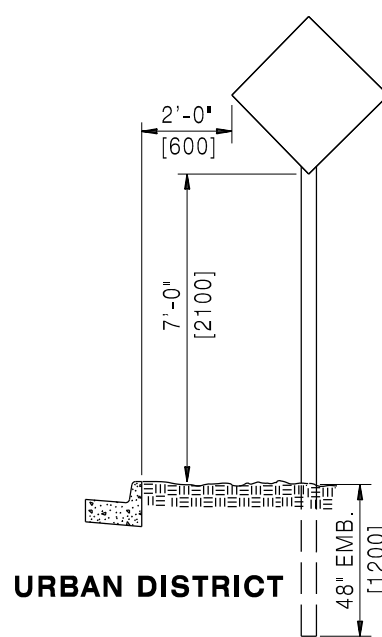
STANDARD PLAN NUMBER
703-1G
 SHEET 1 of 12
 Issued by: TRAFFIC PROGRAM
 Date Issued: OCTOBER, 2016



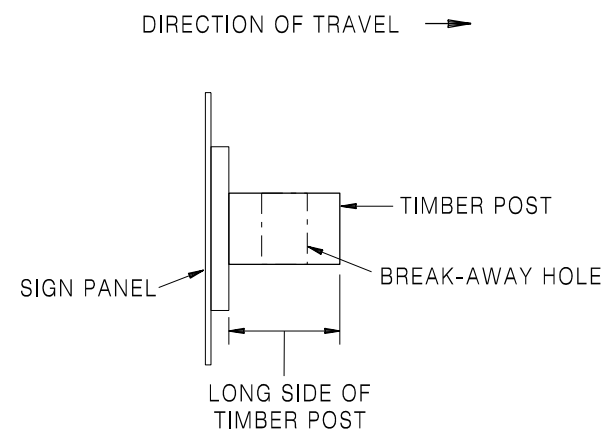
RURAL DISTRICT



RURAL DISTRICT WITH SUPPLEMENTAL PANEL

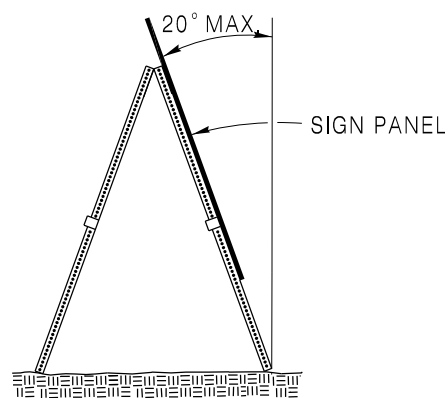


URBAN DISTRICT

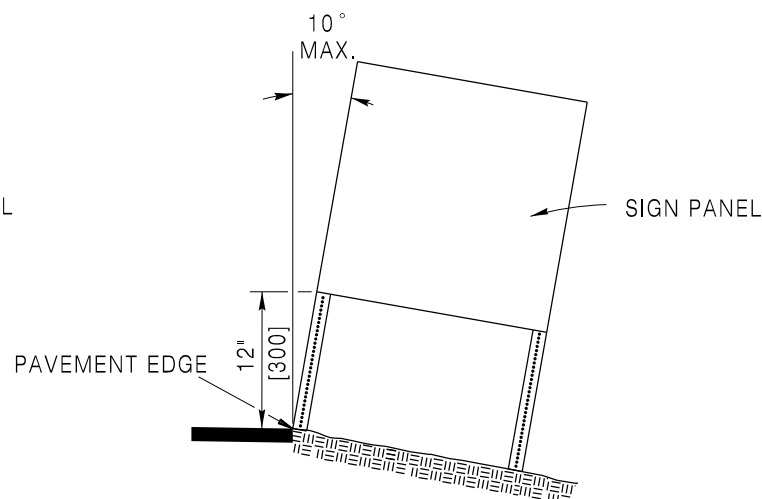


RECTANGULAR TIMBER POST ORIENTATION

SIGN PLACEMENT

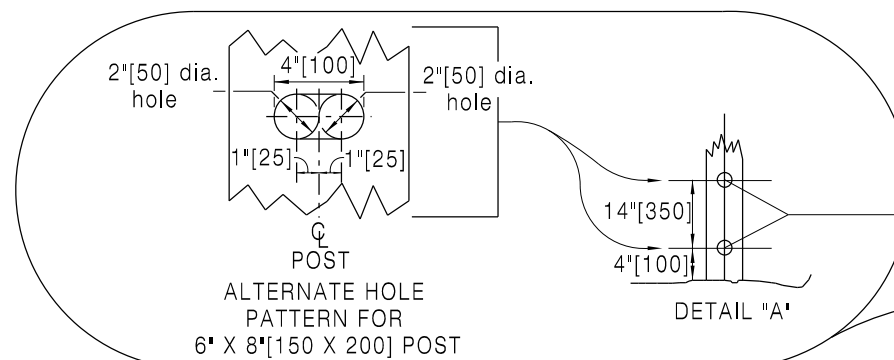


SIDE VIEW



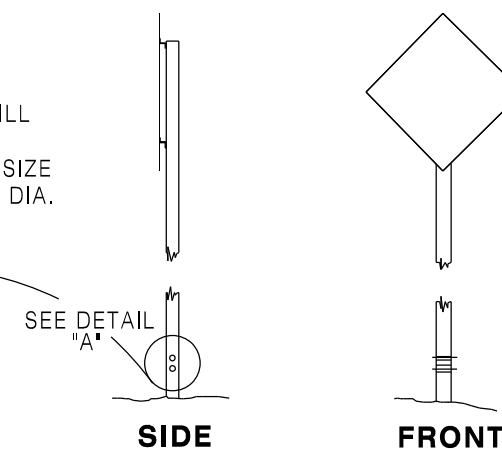
FRONT VIEW

PORTABLE SIGN SUPPORT ORIENTATION



POST SIZE	HOLE DIA.
4" x 4"[100 X 100]	1"[25] Φ
4" x 6"[100 X 150]	2"[50] Φ
6" x 6"[150 X 150]	2 1/2"[64] Φ
6" x 8"[150 X 200]	4"[100] Φ

BREAK-AWAY TIMBER POST DETAIL



SIDE

FRONT

Designed by: TRAFFIC
 Drawn by: JTG
 Checked by: TRAFFIC
 Previous Dwg. No. 703-1F

MISCELLANEOUS SIGNING DETAILS

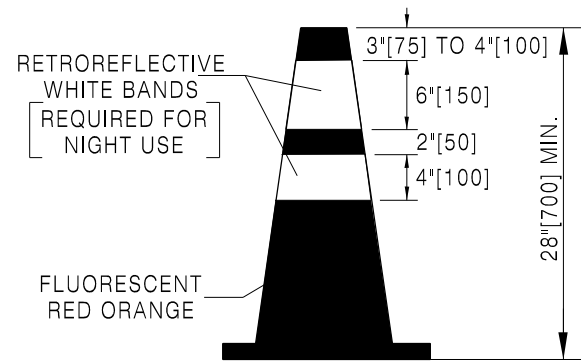
Note: Units shown in brackets [] are metric and are in millimeters (mm) unless other units are shown.



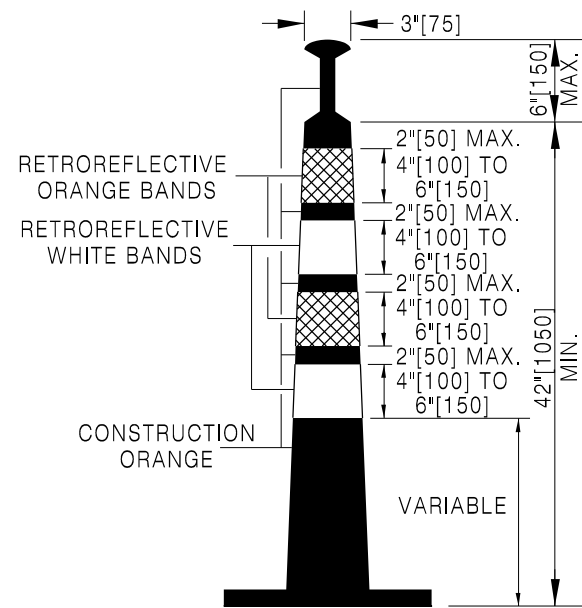
CONSTRUCTION TRAFFIC CONTROL DEVICES

STANDARD PLAN

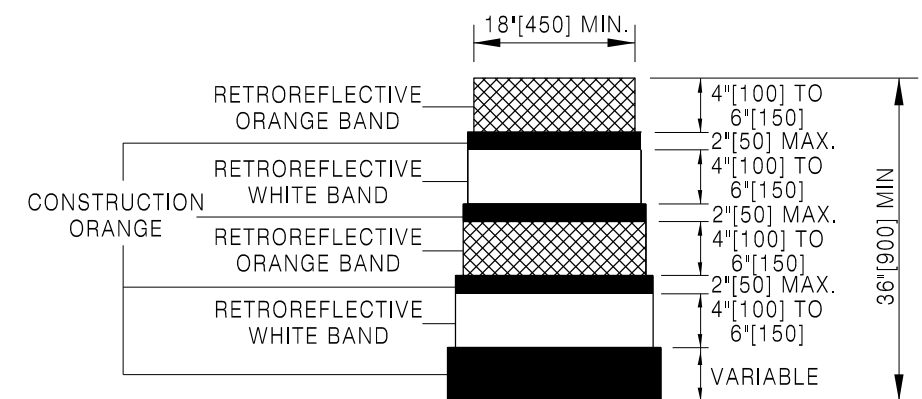
STANDARD PLAN NUMBER
703-1G
 SHEET 2 of 12
 Issued by: TRAFFIC PROGRAM
 Date Issued: OCTOBER, 2016



CONE

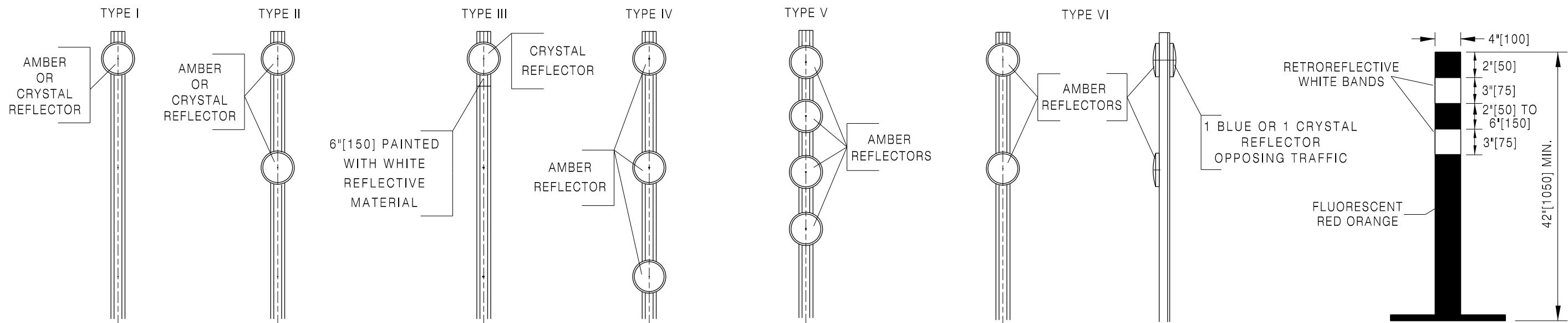


42" [1050] CONE



DRUM

CHANNELIZING DEVICES



DELINEATORS

TUBULAR MARKER

DELINEATING DEVICES

Designed by: TRAFFIC
 Drawn by: JTG
 Checked by: TRAFFIC
 Previous Dwg. No. 703-1F

CHANNELIZING AND DELINEATING DEVICES

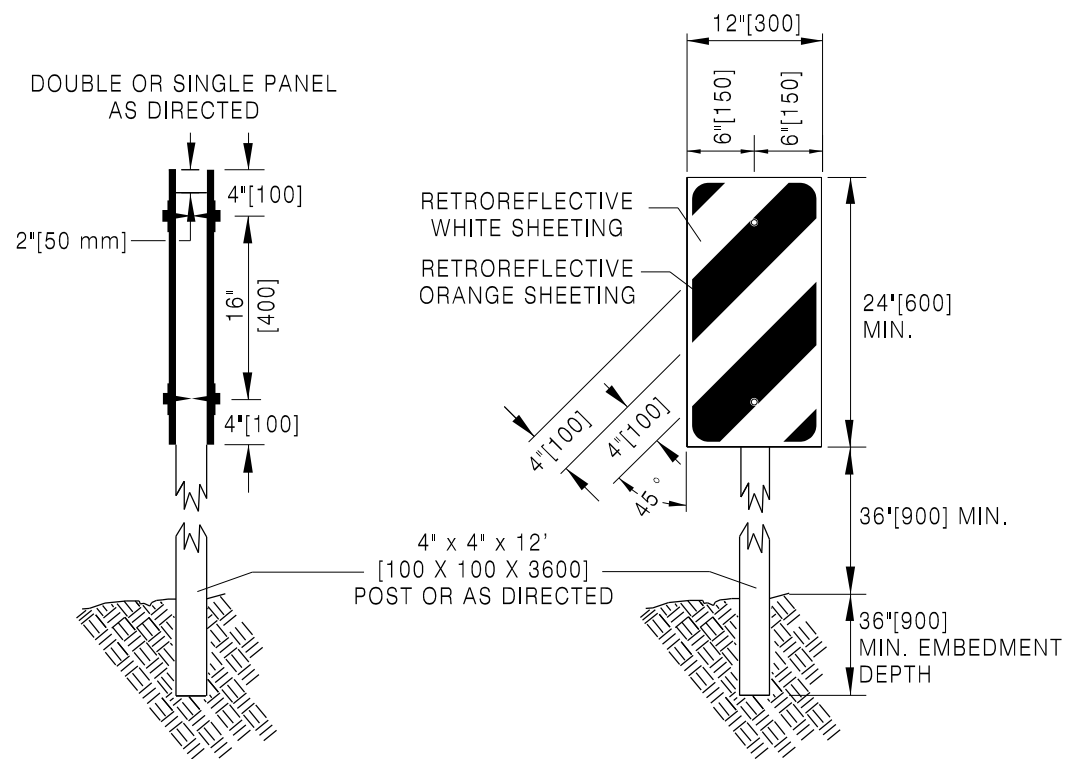


CONSTRUCTION TRAFFIC CONTROL DEVICES

STANDARD PLAN NUMBER
703-1G
 SHEET 3 of 12
 Issued by: TRAFFIC PROGRAM
 Date Issued: OCTOBER, 2016

Note: Units shown in brackets [] are metric and are in millimeters (mm) unless other units are shown.

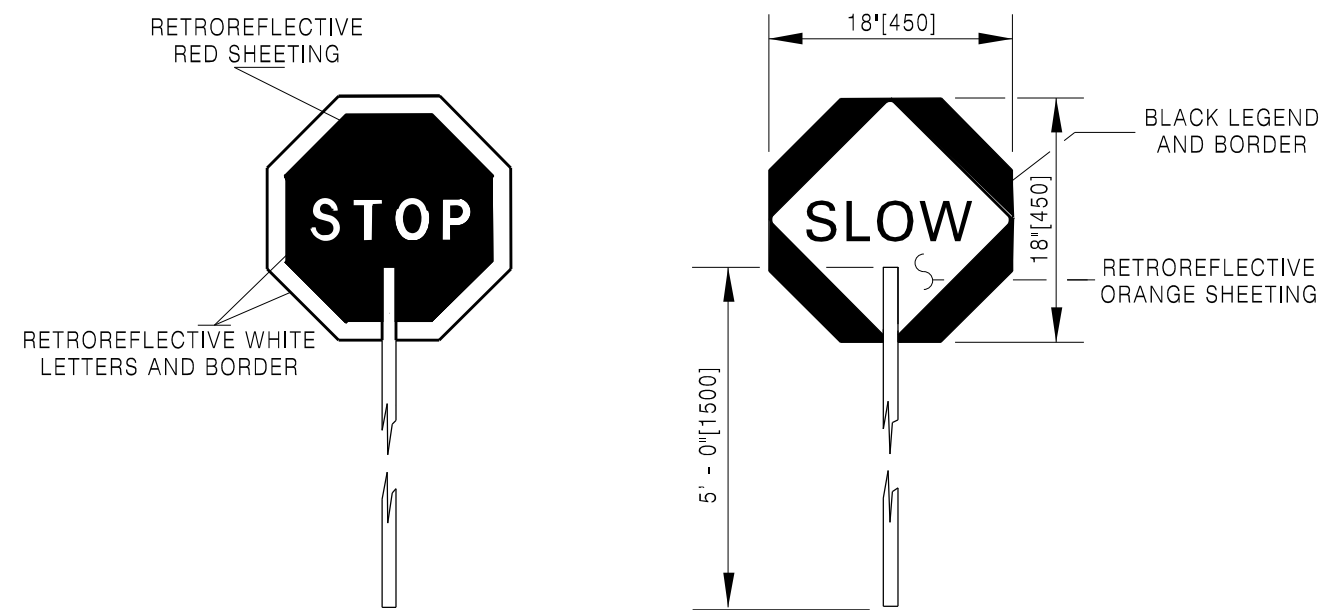
STANDARD PLAN



VERTICAL PANELS

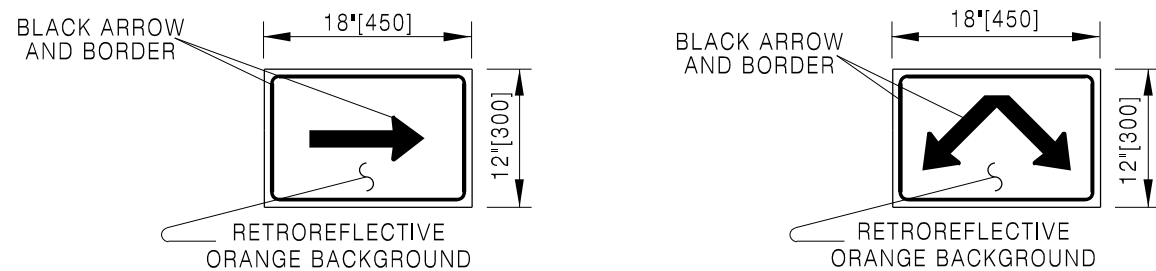
Mount vertical panels on wood posts using 1/4 in.[6] X 2 1/2 in.[64] galvanized lag screws and flat washers.

Slope stripes on vertical panels downward towards the travel way or in the direction which traffic moves when moving by the marker.

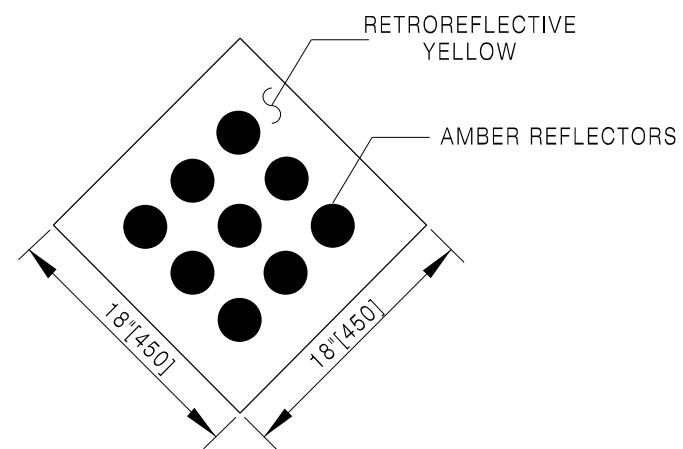


STOP-SLOW PADDLE

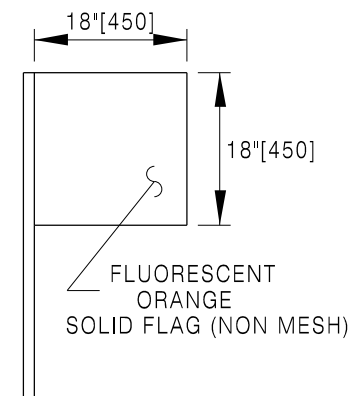
LEFT, RIGHT OR DOUBLE ARROW (AS DIRECTED)



DIRECTIONAL ARROWS



TYPE 1 OBJECT MARKER



SIGN FLAG DETAIL

Designed by: TRAFFIC
 Drawn by: JTG
 Checked by: TRAFFIC
 Previous Dwg. No. 703-1F

MISCELLANEOUS SIGNING DETAILS

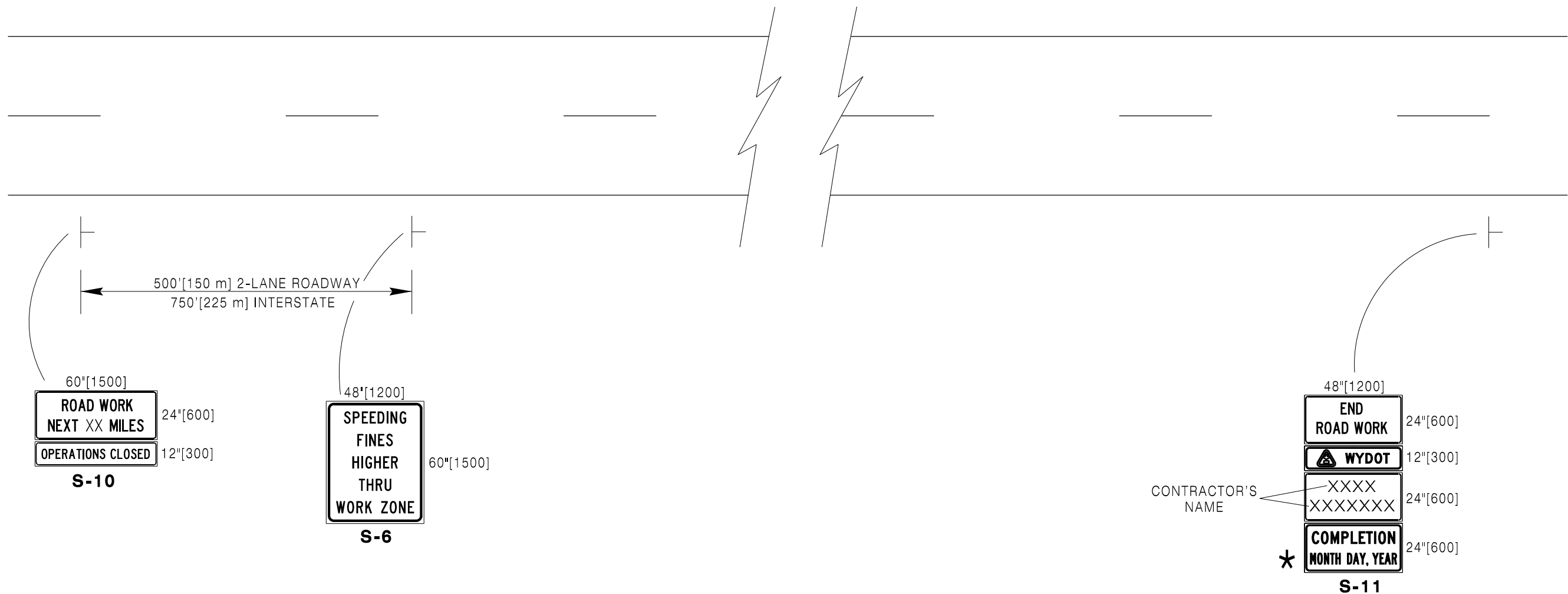
Note: Units shown in brackets [] are metric and are in millimeters (mm) unless other units are shown.



CONSTRUCTION TRAFFIC CONTROL DEVICES

STANDARD PLAN

STANDARD PLAN NUMBER
703-1G
 SHEET 4 of 12
 Issued by: TRAFFIC PROGRAM
 Date Issued: OCTOBER, 2016



NOTES:

Do not obstruct or detract from the effectiveness of standard construction or permanent signs with these signs. Place signs **500'[150 m] or 750'[225 m]** in advance of any construction or permanent signing. Do not substitute these signs for construction warning or regulatory signs.

Use "OPERATIONS CLOSED" sign as directed by the engineer, when construction ceases for the winter or other periods of suspension.

★ This sign signifies the date the project is to be completed. The TRAFFIC PROGRAM of WYDOT furnishes, upon request of the contractor, sign fabrication layout sheets.

Designed by: TRAFFIC
Drawn by: JTG
Checked by: TRAFFIC
Previous Dwg. No. 703-1F

BEGINNING AND ENDING CONSTRUCTION ZONE SIGNING

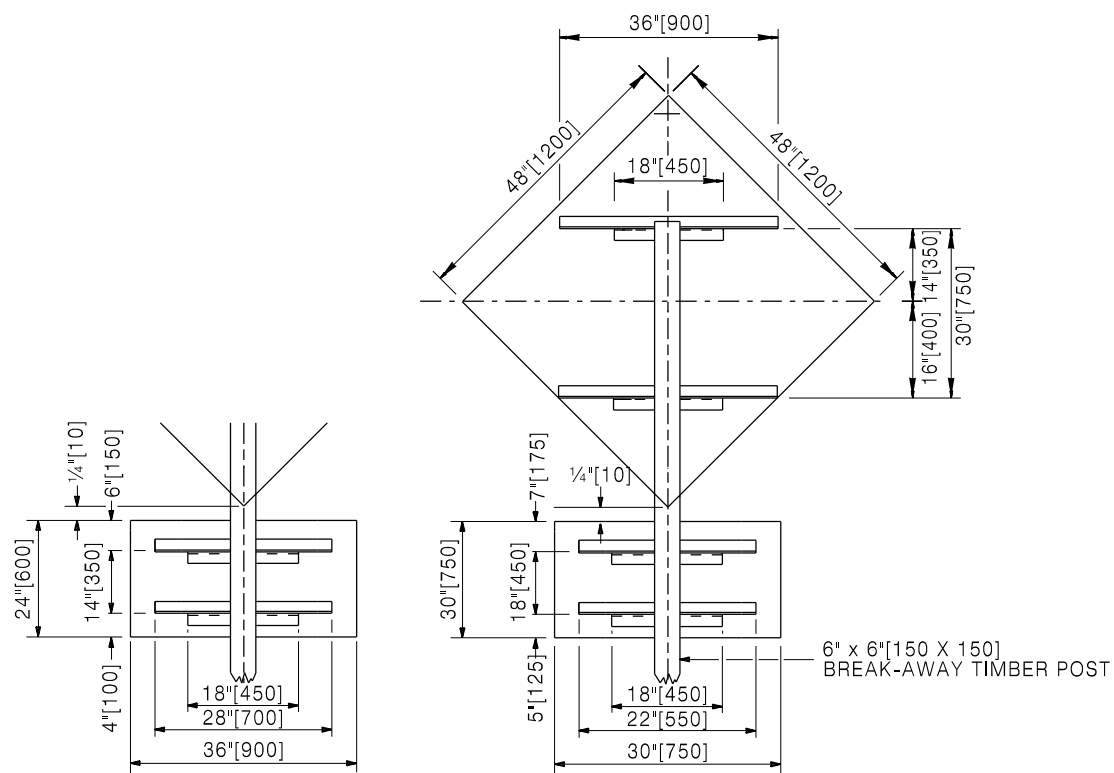
Note: Units shown in brackets [] are metric and are in millimeters (mm) unless other units are shown.



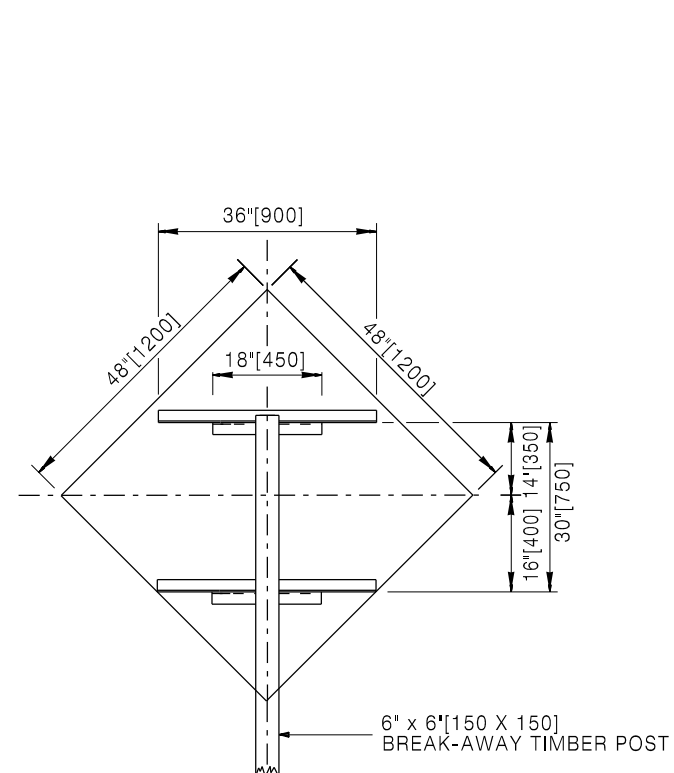
CONSTRUCTION TRAFFIC CONTROL DEVICES

STANDARD PLAN

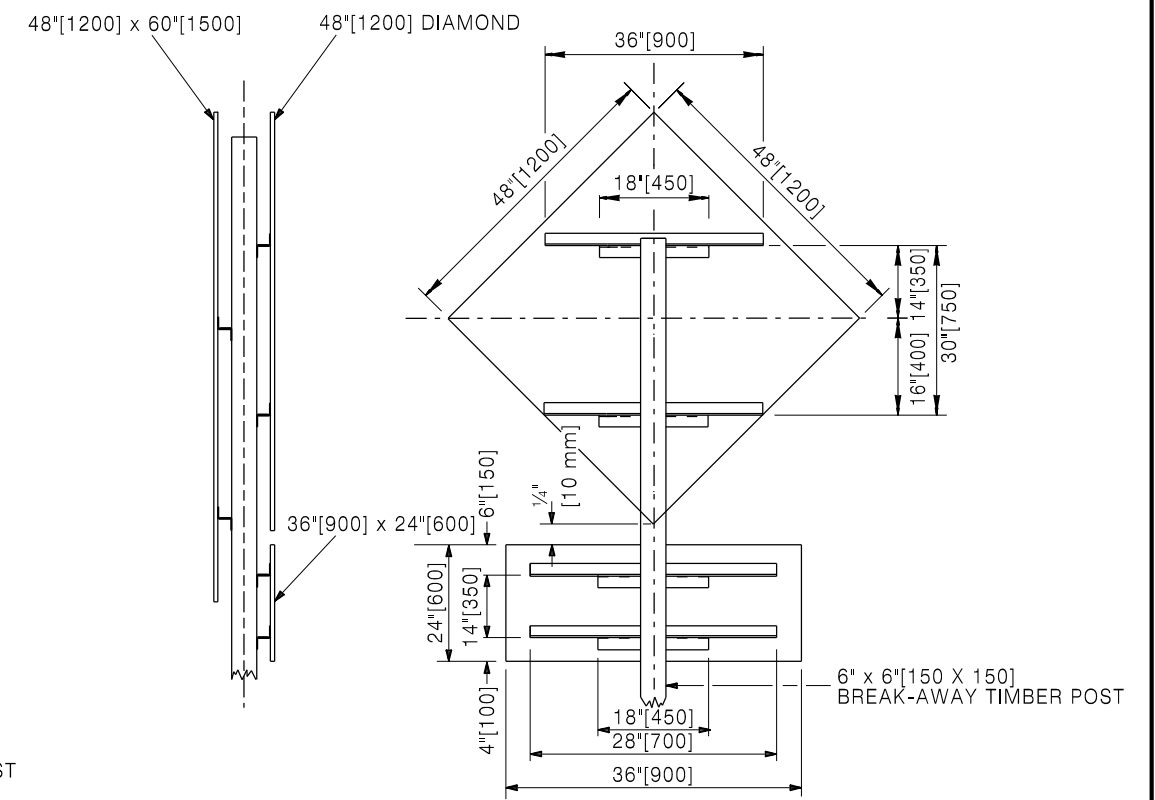
STANDARD PLAN NUMBER
703-1G
SHEET 5 of 12
Issued by: TRAFFIC PROGRAM
Date Issued: OCTOBER, 2016



S-1 AND S-1A



S-2 AND S-2A



S-3

NOTE:
BACKING ANGLES ARE NOT REQUIRED FOR ONE PIECE 0.125 ALUMINUM OR 1/2" PLYWOOD SIGN PANELS 48" X 60" OR SMALLER.

Designed by: TRAFFIC
Drawn by: JTG
Checked by: TRAFFIC
Previous Dwg. No.
703-1F

SIGN STRUCTURE DETAILS

Note: Units shown in brackets [] are metric and are in millimeters (mm) unless other units are shown.



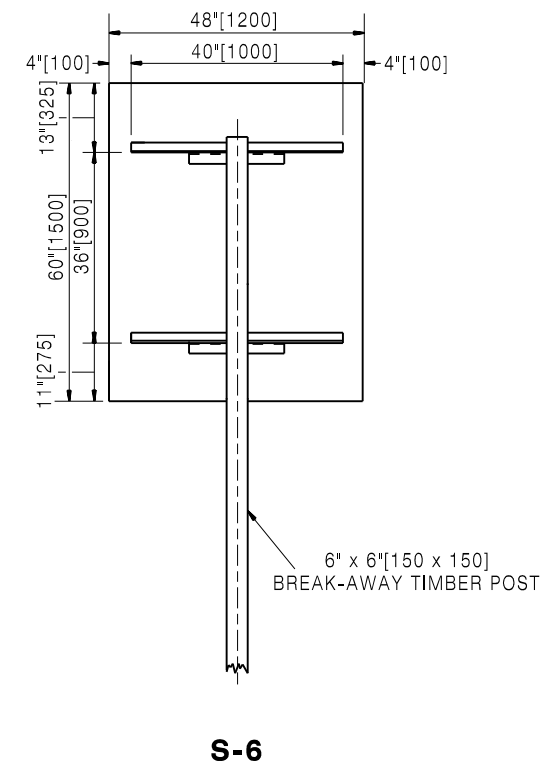
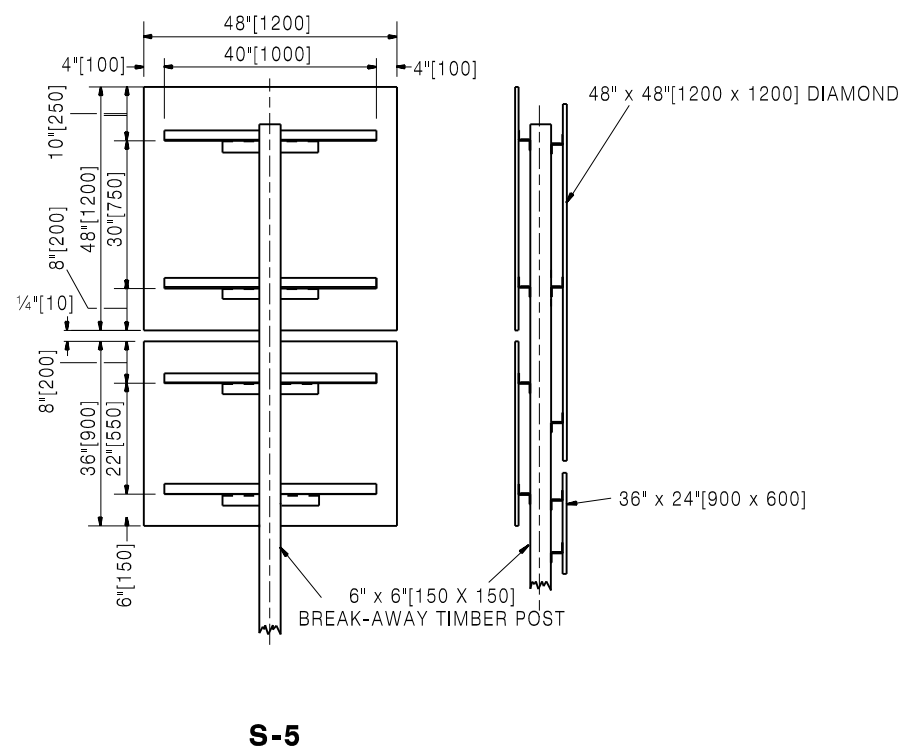
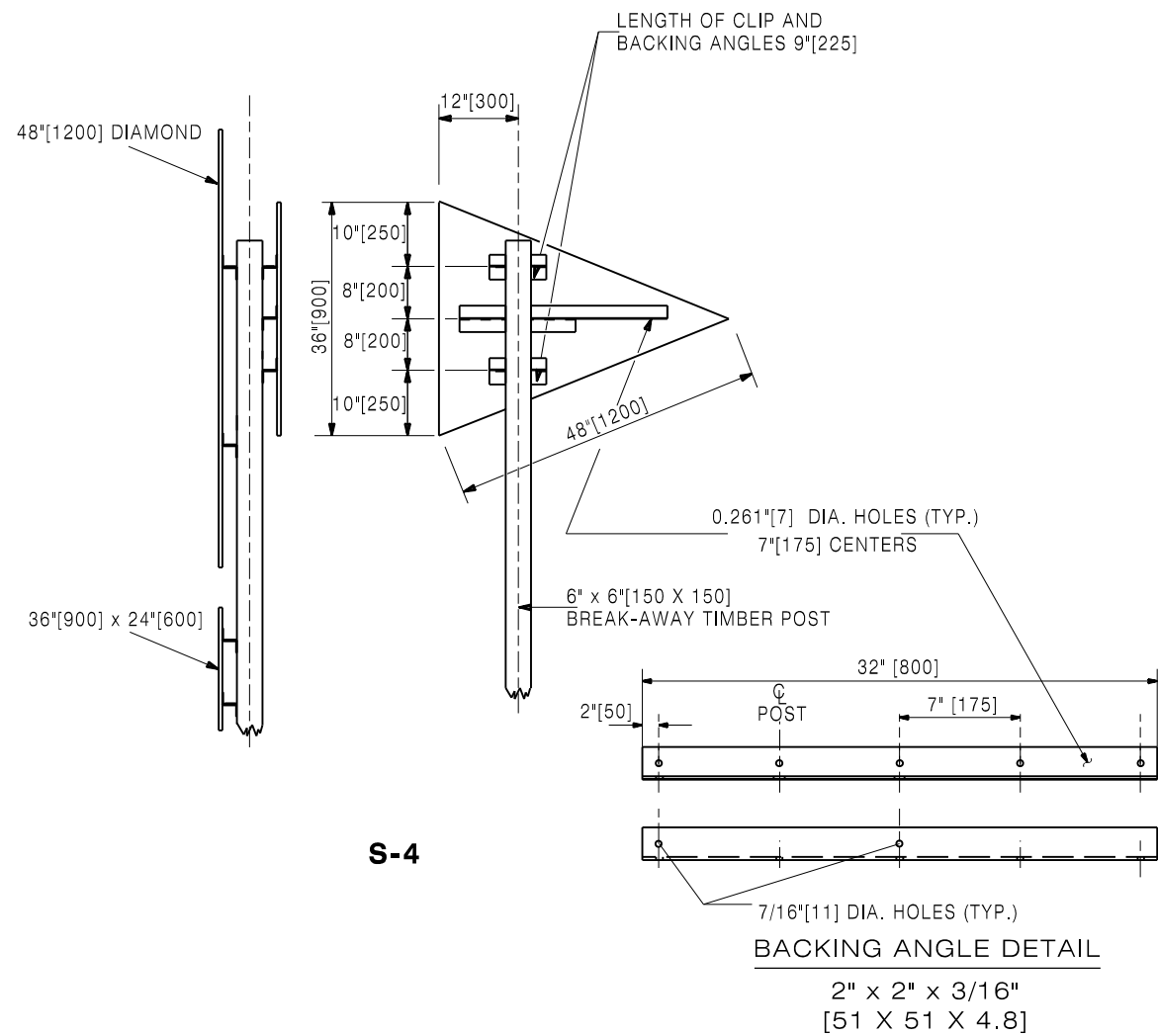
WYOMING DEPARTMENT
OF
TRANSPORTATION



CONSTRUCTION TRAFFIC
CONTROL DEVICES

STANDARD PLAN

STANDARD PLAN NUMBER
703-1G
SHEET 6 of 12
Issued by: TRAFFIC PROGRAM
Date Issued: OCTOBER, 2016



NOTE:
BACKING ANGLES ARE NOT REQUIRED FOR ONE PIECE 0.125 ALUMINUM OR 1/2" PLYWOOD SIGN PANELS 48" X 60" OR SMALLER.

Designed by: TRAFFIC
Drawn by: JTG
Checked by: TRAFFIC
Previous Dwg. No. 703-1F

SIGN STRUCTURE DETAILS

Note: Units shown in brackets [] are metric and are in millimeters (mm) unless other units are shown.



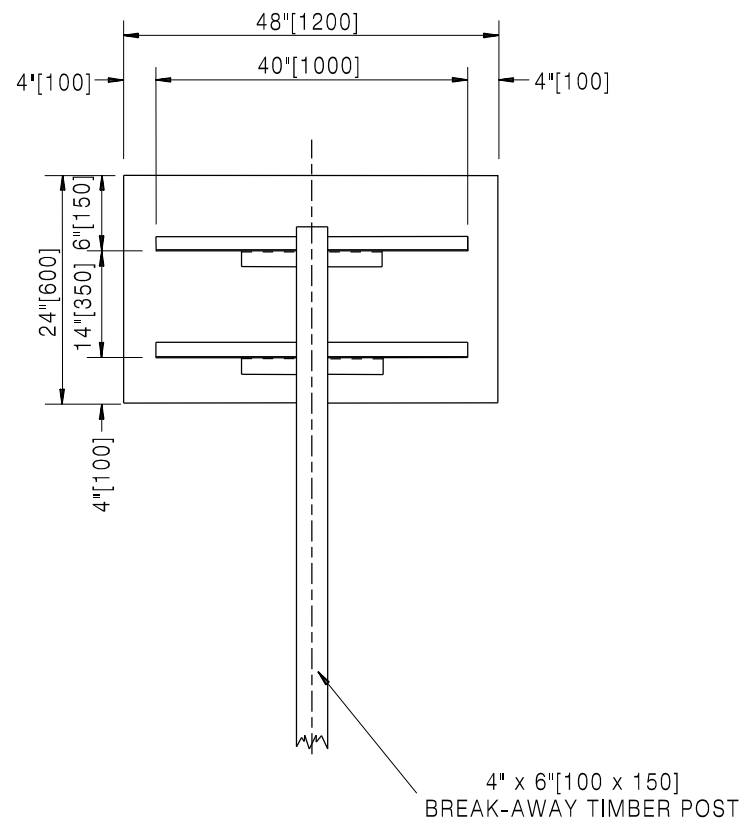
WYOMING DEPARTMENT
OF
TRANSPORTATION



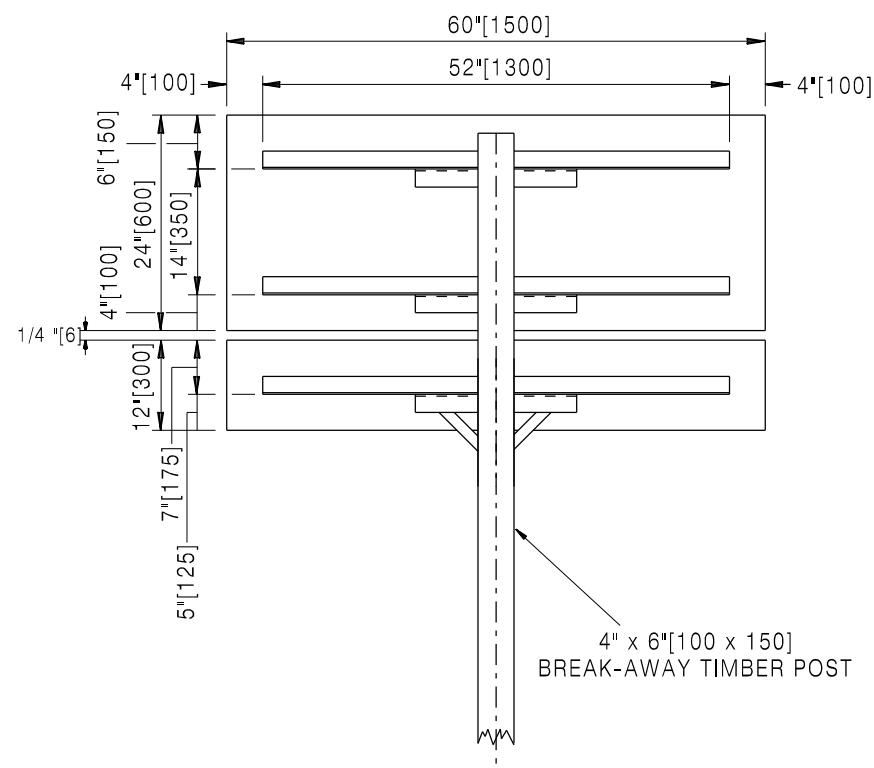
CONSTRUCTION TRAFFIC
CONTROL DEVICES

STANDARD PLAN

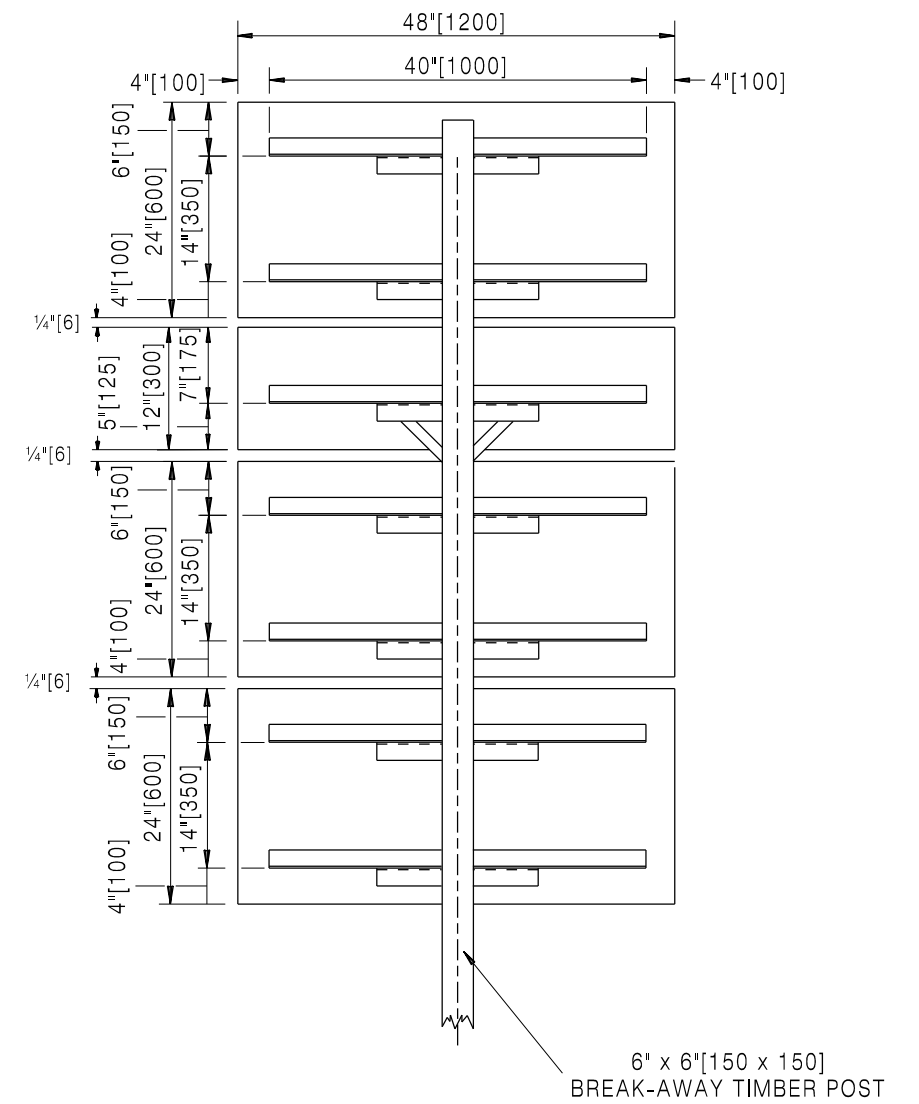
STANDARD PLAN NUMBER
703-1G
SHEET 7 of 12
Issued by: TRAFFIC PROGRAM
Date Issued: OCTOBER, 2015



S-7



S-10



S-11

NOTE:
BACKING ANGLES ARE NOT REQUIRED FOR ONE PIECE 0.125 ALUMINUM OR 1/2" PLYWOOD SIGN PANELS 48" X 60" OR SMALLER.

Designed by: TRAFFIC
Drawn by: JTG
Checked by: TRAFFIC
Previous Dwg. No.
703-1F

SIGN STRUCTURE DETAILS

Note: Units shown in brackets [] are metric and are in millimeters (mm) unless other units are shown.

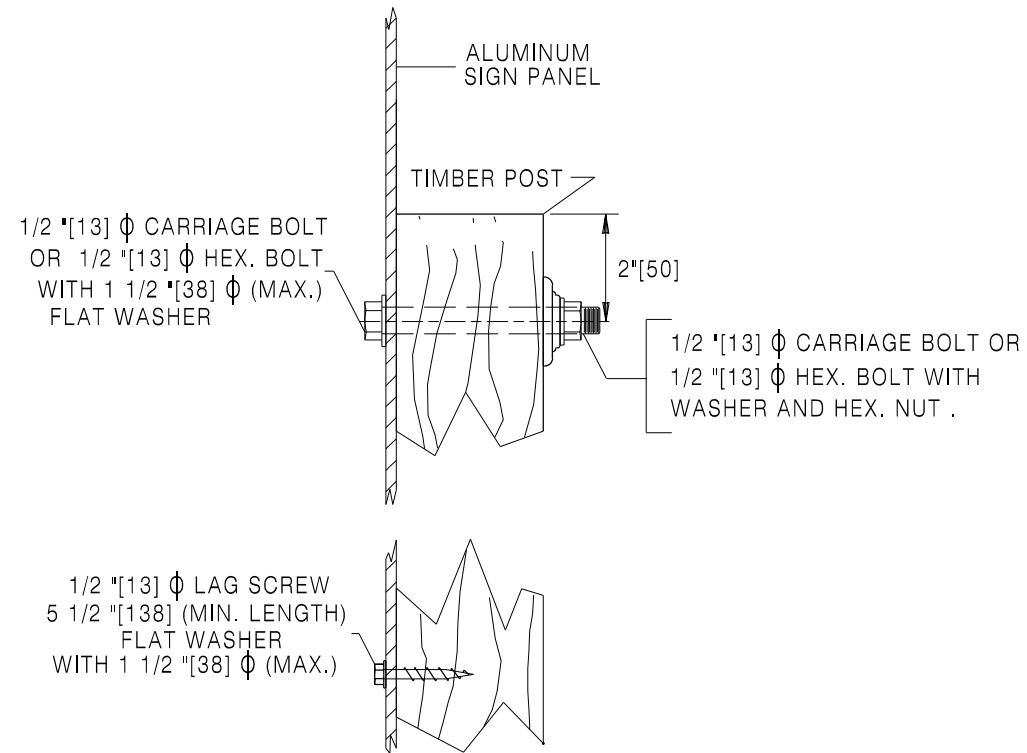


WYOMING DEPARTMENT
OF
TRANSPORTATION

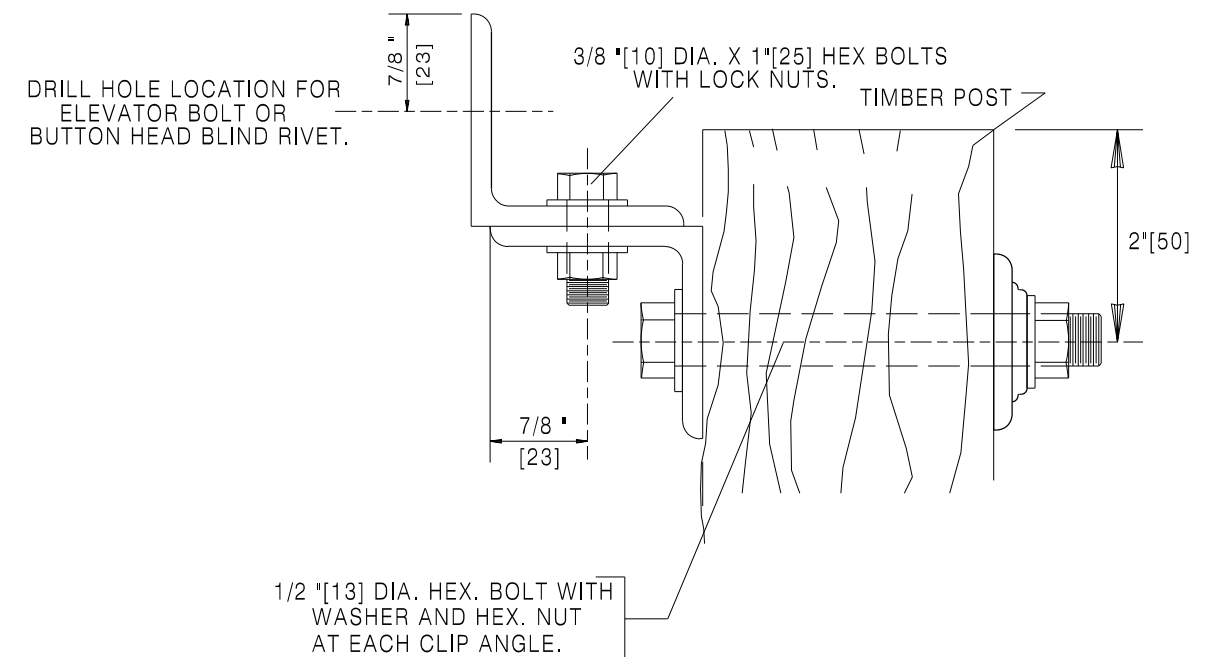
CONSTRUCTION TRAFFIC
CONTROL DEVICES

STANDARD PLAN

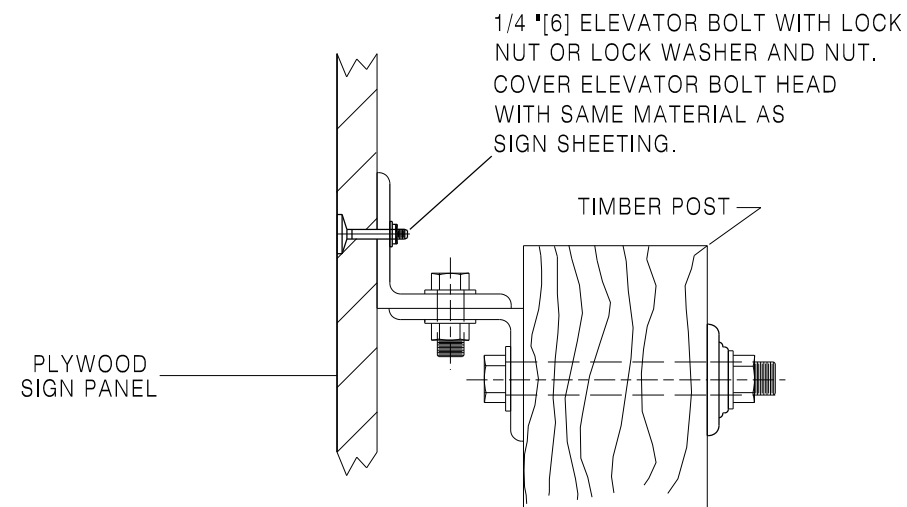
STANDARD PLAN NUMBER
703-1G
SHEET 8 of 12
Issued by: TRAFFIC PROGRAM
Date Issued: OCTOBER, 2016



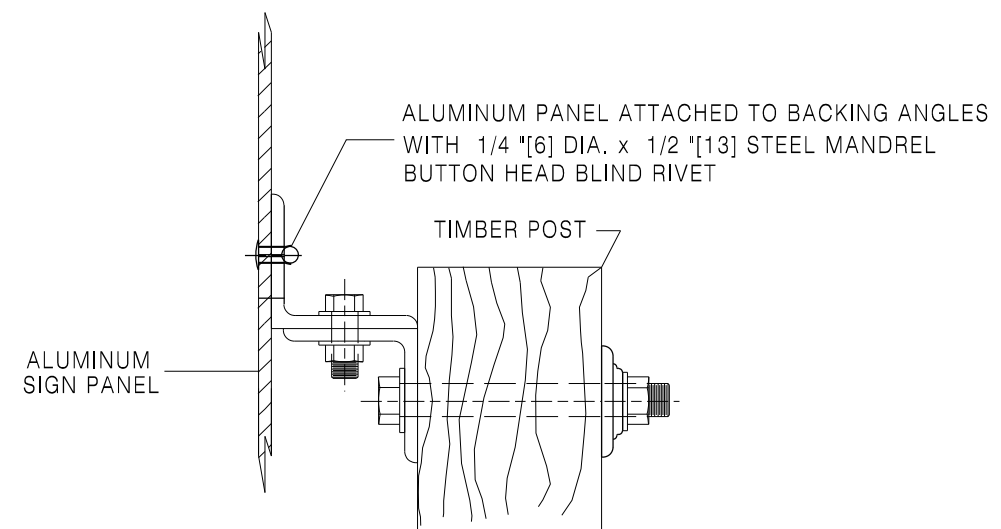
**PANEL MOUNTING
SIDE VIEW ALUMINUM
WITHOUT BACKING ANGLES**



**BACKING ANGLE AND CLIP ANGLE
MOUNTING DETAIL**



**PANEL MOUNTING
SIDE VIEW PLYWOOD**



**PANEL MOUNTING
SIDE VIEW ALUMINUM**

Designed by: TRAFFIC
 Drawn by: JTG
 Checked by: TRAFFIC
 Previous Dwg. No. 703-1F

SIGN STRUCTURE DETAILS

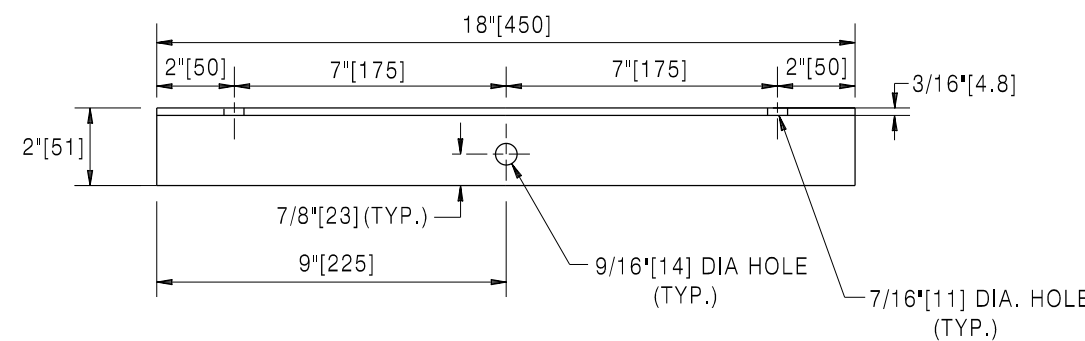
Note: Units shown in brackets [] are metric and are in millimeters (mm) unless other units are shown.



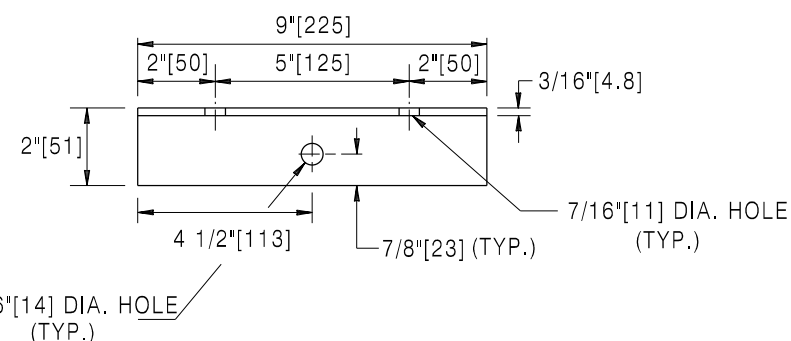
**CONSTRUCTION TRAFFIC
CONTROL DEVICES**

STANDARD PLAN

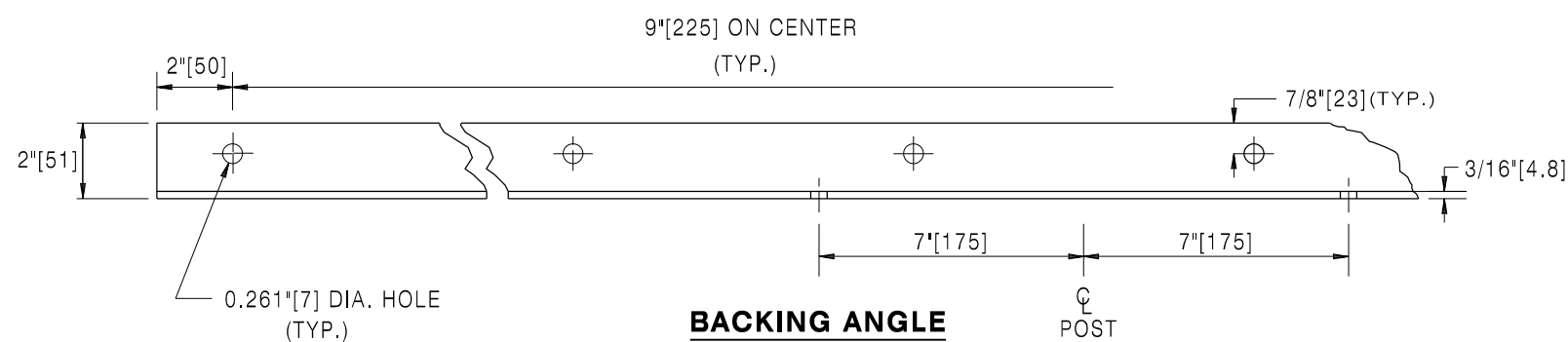
STANDARD PLAN NUMBER
703-1G
 SHEET 9 of 12
 Issued by: TRAFFIC PROGRAM
 Date Issued: OCTOBER, 2016



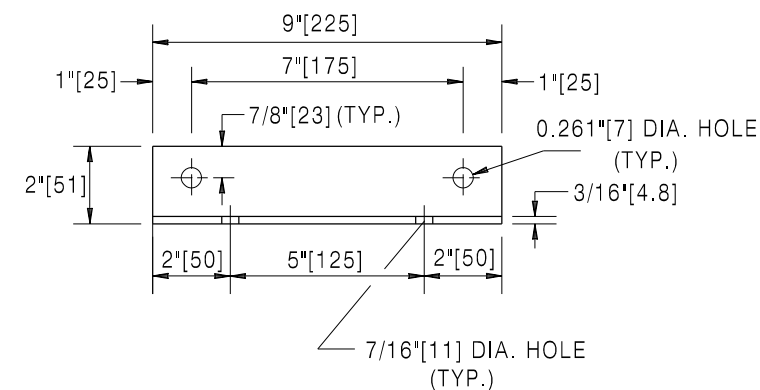
CLIP ANGLE



CLIP ANGLE



BACKING ANGLE



BACKING ANGLE

BACKING ANGLE OR CLIP ANGLE DETAILS

Designed by: TRAFFIC
 Drawn by: JTG
 Checked by: TRAFFIC
 Previous Dwg. No. 703-1F

SIGN STRUCTURE DETAILS

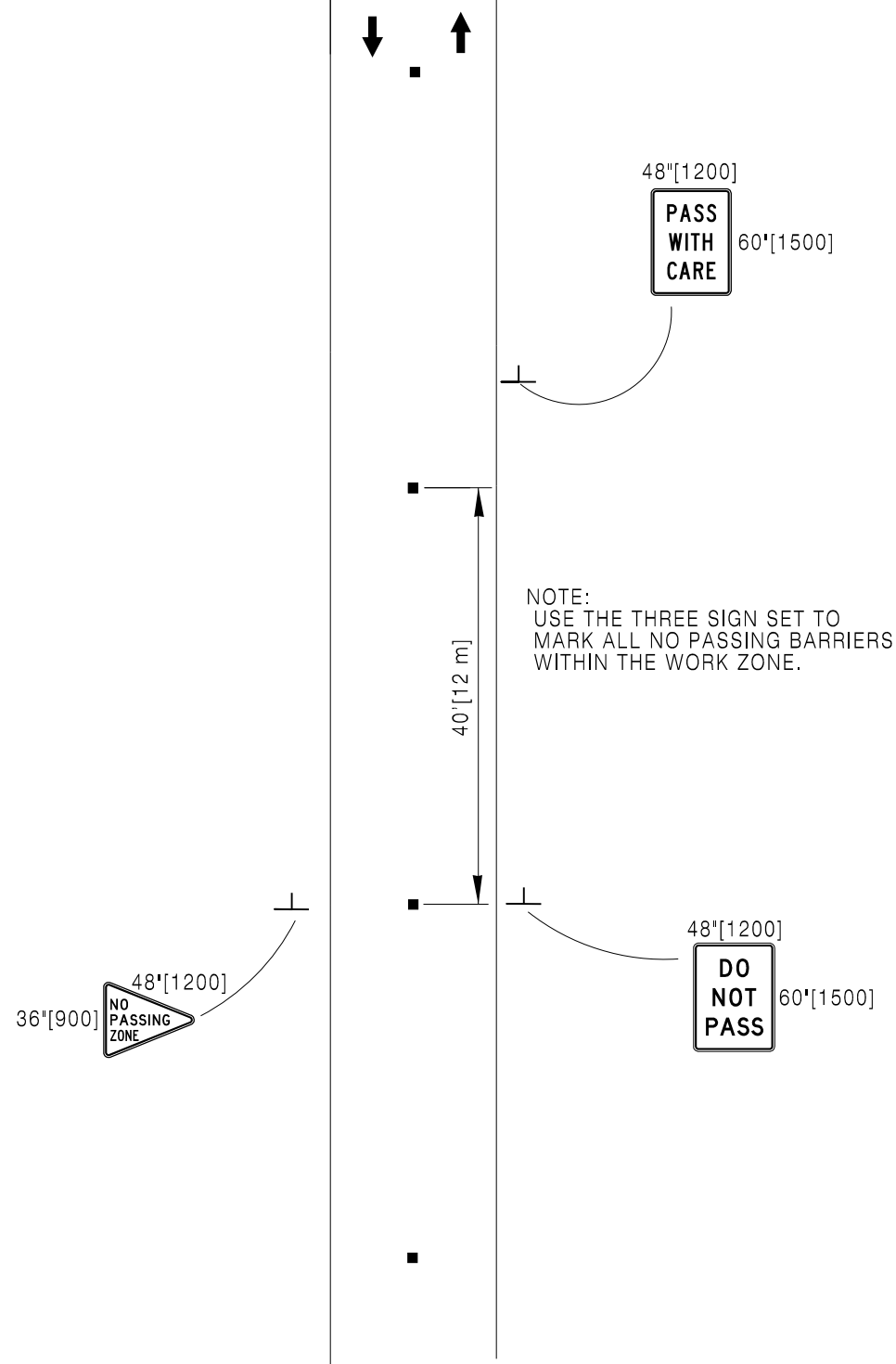
Note: Units shown in brackets [] are metric and are in millimeters (mm) unless other units are shown.



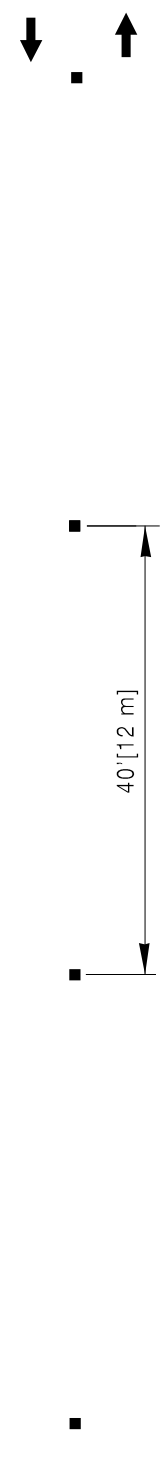
CONSTRUCTION TRAFFIC CONTROL DEVICES

STANDARD PLAN

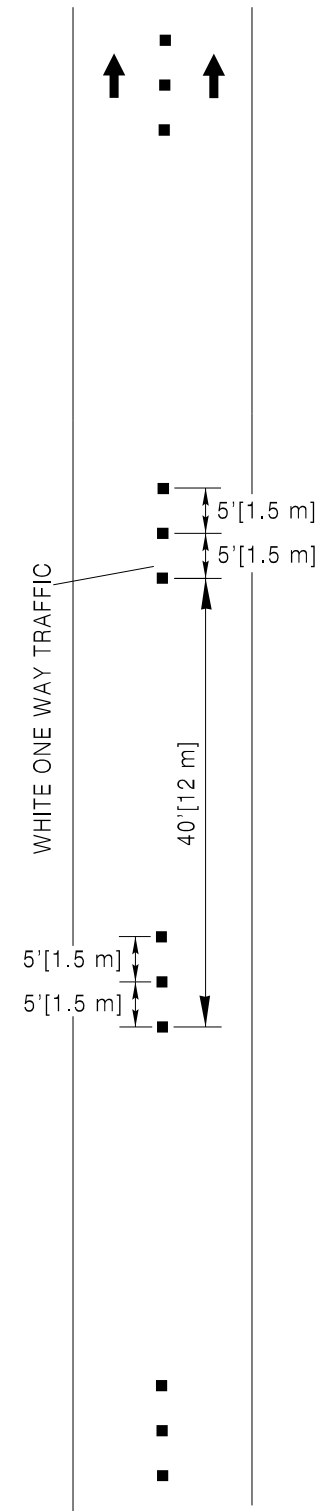
STANDARD PLAN NUMBER
703-1G
 SHEET 10 of 12
 Issued by: TRAFFIC PROGRAM
 Date Issued: OCTOBER, 2016



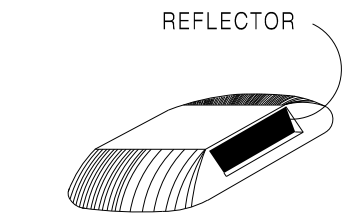
2 LANE 2-WAY ROADWAYS USING RAISED PAVEMENT MARKERS OR MOTORIST GUIDANCE MARKERS, CENTERLINE AND THREE SIGN SEQUENCE, INCLUDING NO-PASSING ZONE



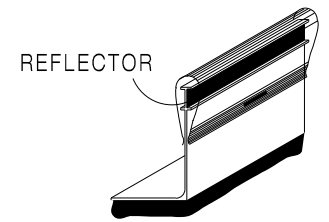
2 LANE 2-WAY ROADWAY (CENTER LINE) USING RAISED PAVEMENT MARKERS OR MOTORIST GUIDANCE MARKERS



INTERSTATE (LANE LINE) USING RAISED PAVEMENT MARKERS

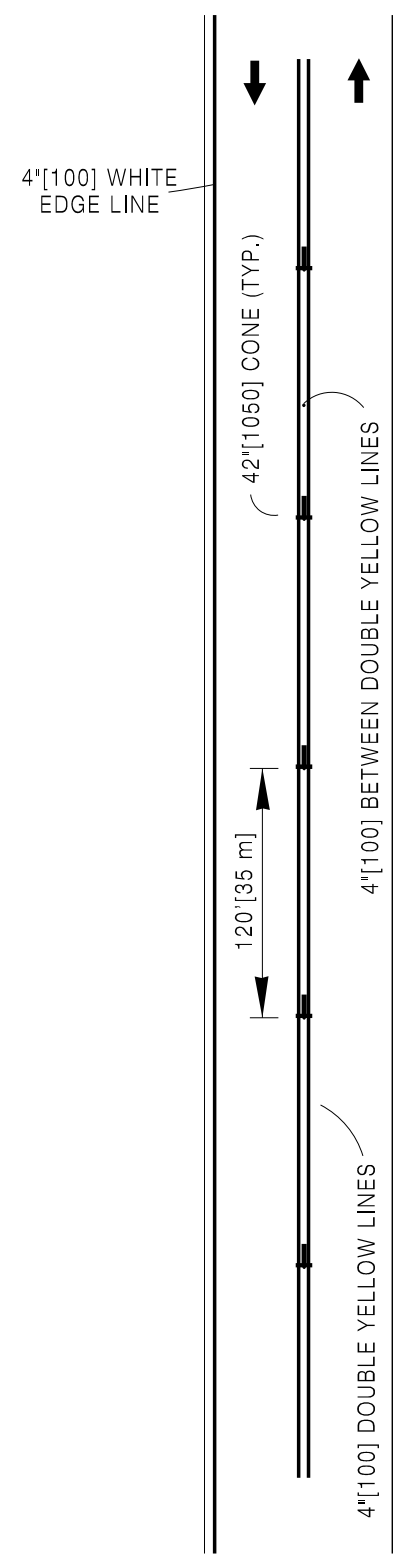


2" x 4"[50 x 100] TEMPORARY RAISED PAVEMENT MARKERS

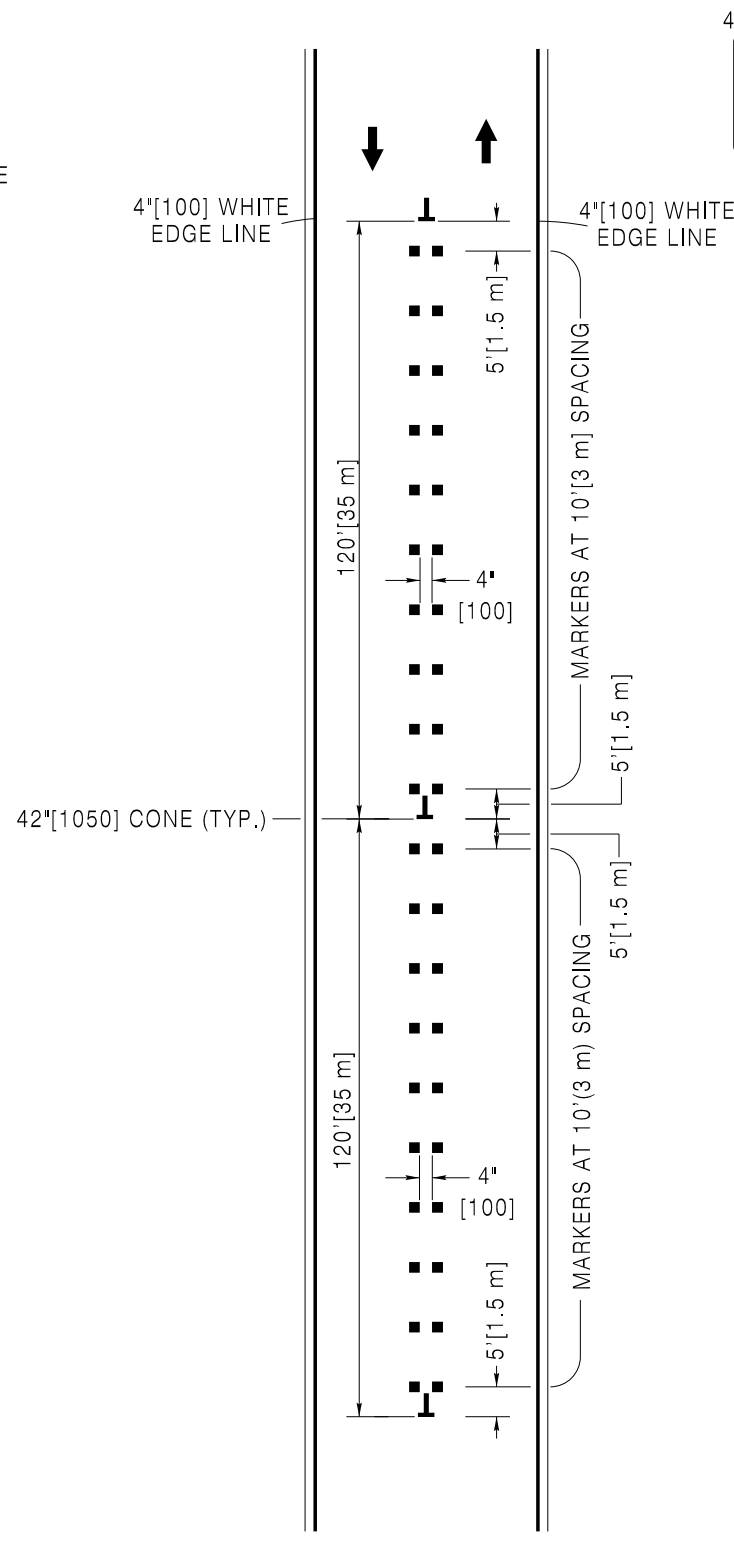


MOTORIST GUIDANCE MARKERS

LEGEND
 ■ TEMPORARY MARKERS



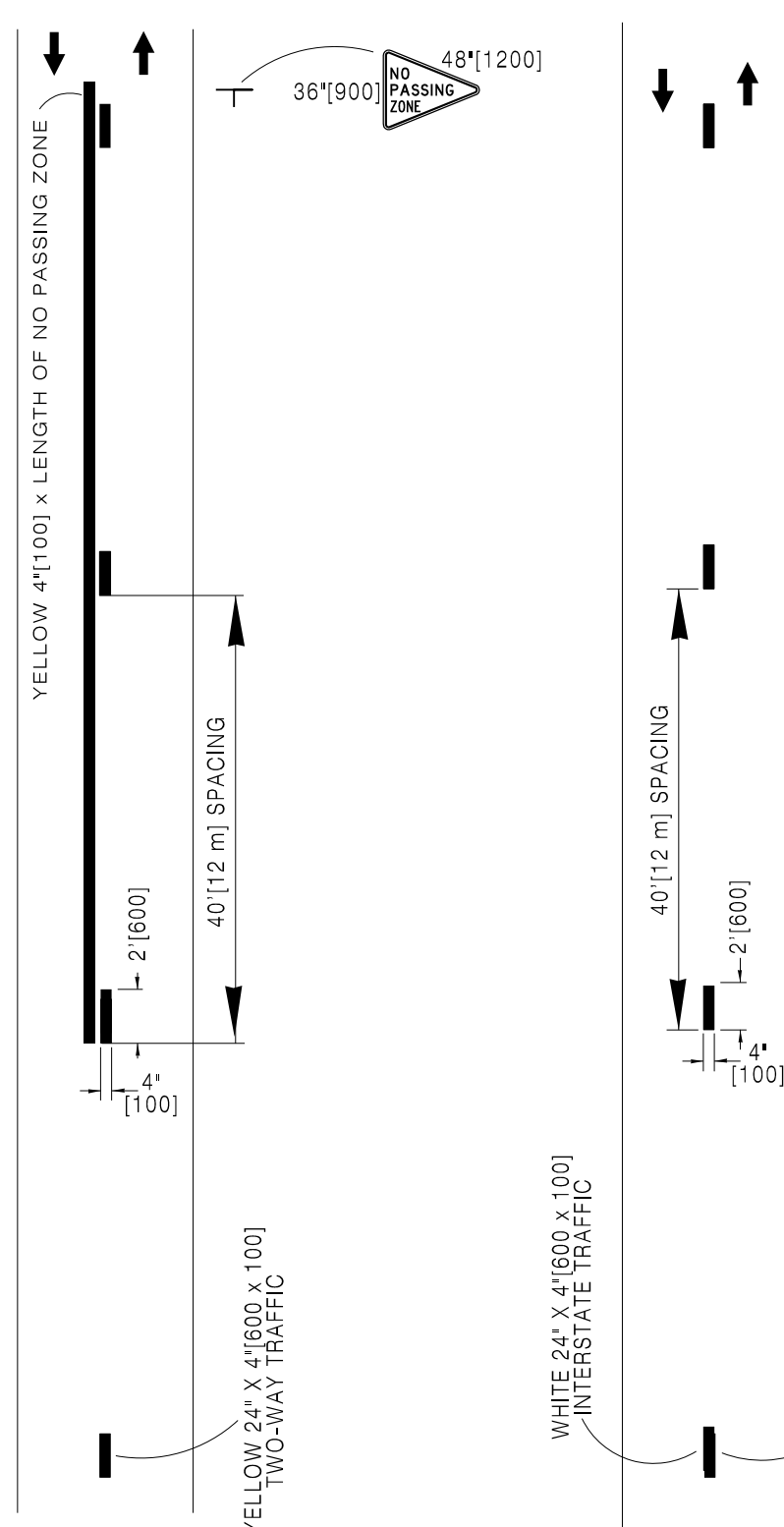
**ONE LANE OF INTERSTATE
(2 LANE 2-WAY DURING CONSTRUCTION)
TEMPORARY STRIPING TAPE OR PAINT**



**ONE LANE OF INTERSTATE
(2 LANE 2-WAY DURING CONSTRUCTION)
USING TEMPORARY STRIPING TAPE OR
RAISED PAVEMENT MARKERS
DOUBLE SIDE (YELLOW)**



**2 LANE 2-WAY ROADWAY
(CENTER LINE) OR INTERSTATE
(LANE LINE) USING TEMPORARY
STRIPING TAPE OR PAINT**

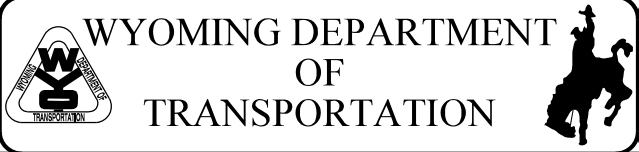


**2 LANE 2-WAY ROADWAY
(CENTER LINE) OR INTERSTATE
(LANE LINE) USING TEMPORARY
STRIPING TAPE OR PAINT**

- LEGEND**
- TEMPORARY MARKERS
 - ⌋ 42" [1050] CONE

Designed by: TRAFFIC
 Drawn by: JTG
 Checked by: TRAFFIC
 Previous Dwg. No. 703-1F

INTERMEDIATE LIFT
 TEMPORARY PAVEMENT MARKERS



**CONSTRUCTION TRAFFIC
 CONTROL DEVICES**

STANDARD PLAN NUMBER
703-1G
 SHEET 12 of 12
 Issued by: TRAFFIC PROGRAM
 Date Issued: OCTOBER, 2016

Note: Units shown in brackets [] are metric and are in millimeters (mm) unless other units are shown.

STANDARD PLAN