

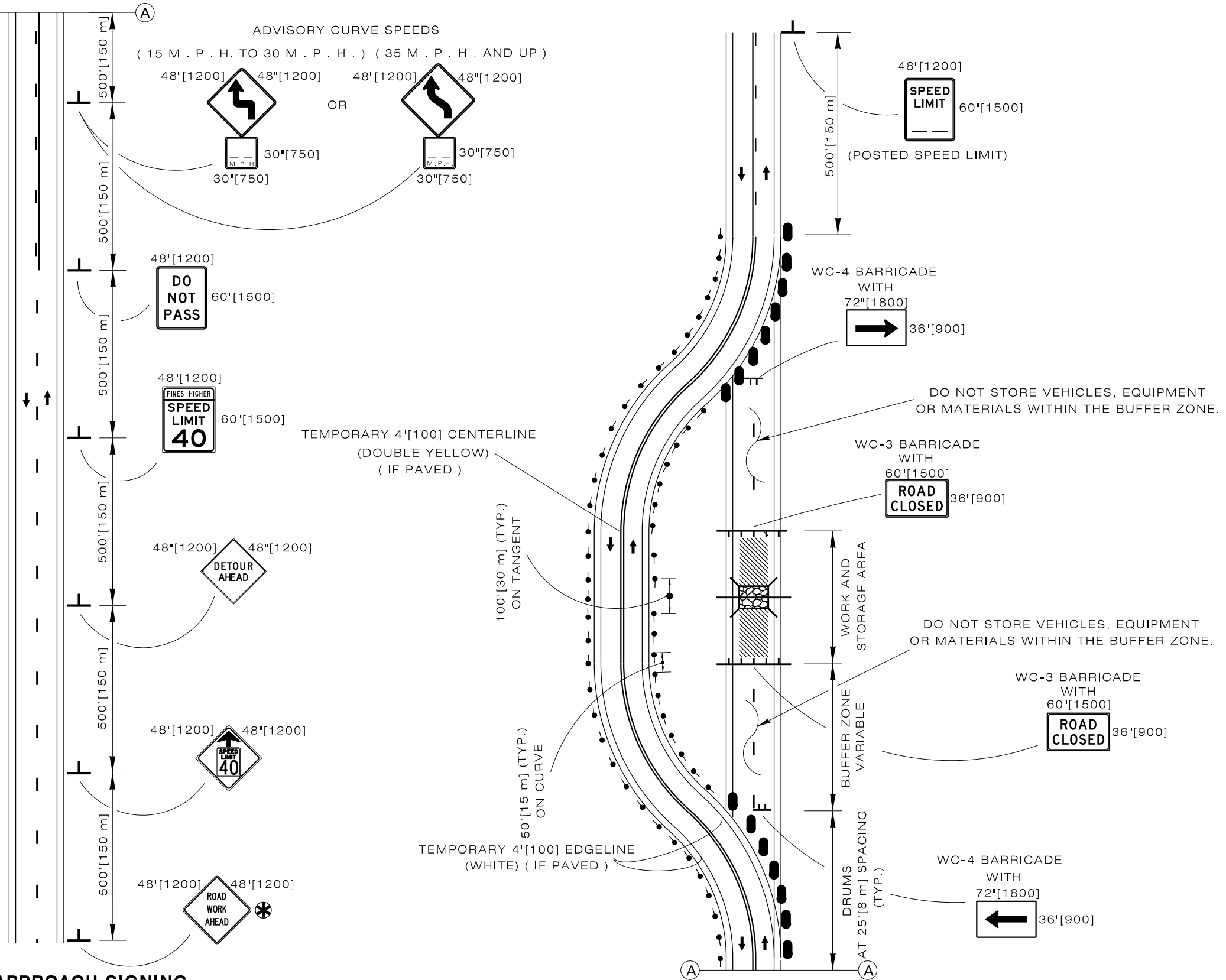
✳ USE ONLY IF NO PREVIOUS "ROAD WORK AHEAD" SIGNS WITHIN 1 MILE [1.6 km], OR IF OUTSIDE OF THE REGULAR CONSTRUCTION AREA.

◆ TYPICAL APPROACH SIGNING, SIGN FOR BOTH DIRECTIONS (SIGNS SHOWN FOR ONE DIRECTION OF TRAVEL ONLY).

LEGEND

- TYPE II DELINEATOR
- ▨ CONSTRUCTION AREA
- ▨ STORAGE AREA
- DRUM

◆ TYPICAL APPROACH SIGNING



Designed by: TRAFFIC  
 Drawn by: JTG  
 Checked by: TRAFFIC  
 Previous Dwg. No. 703-2E

TYPICAL TRAFFIC CONTROL SIGNING FOR  
 DETOUR AROUND CONSTRUCTION

Note: Units shown in brackets [ ] are metric and are in millimeters (mm) unless other units are shown.



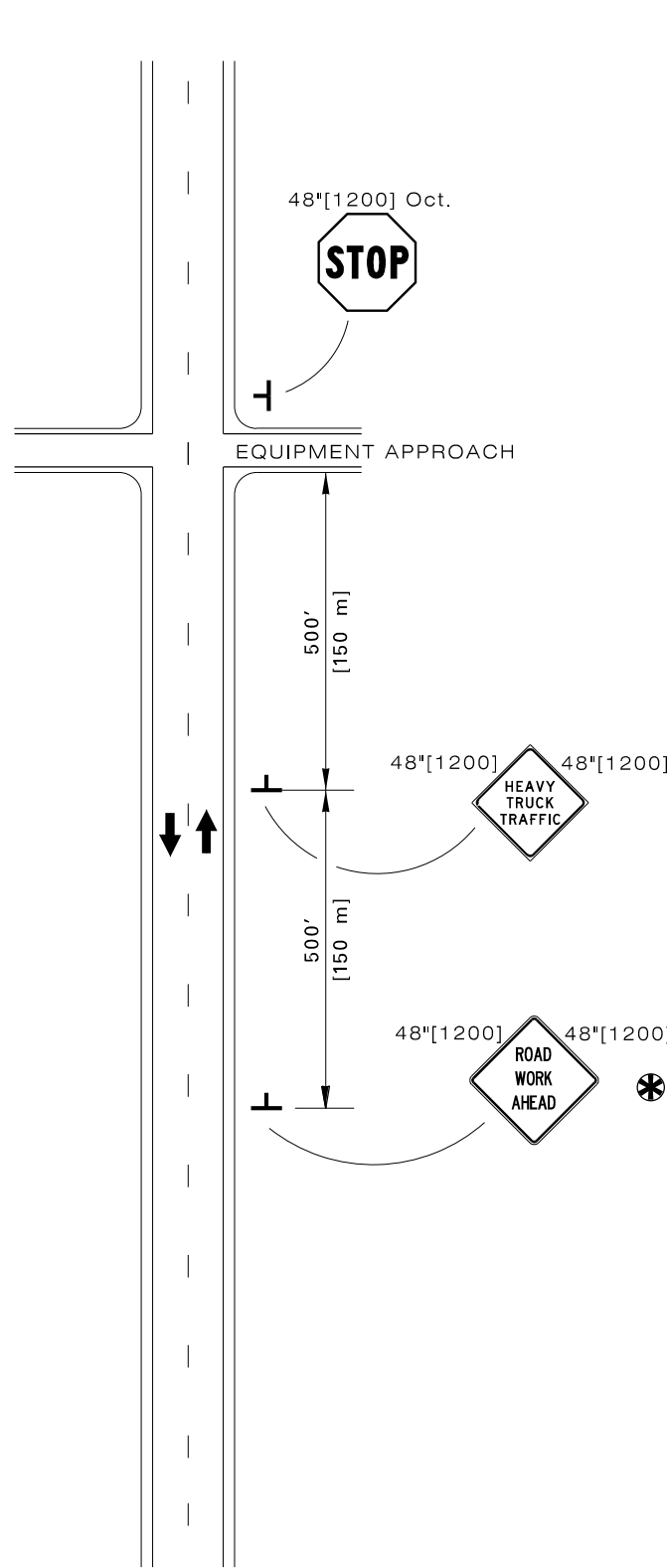
WYOMING DEPARTMENT  
 OF  
 TRANSPORTATION



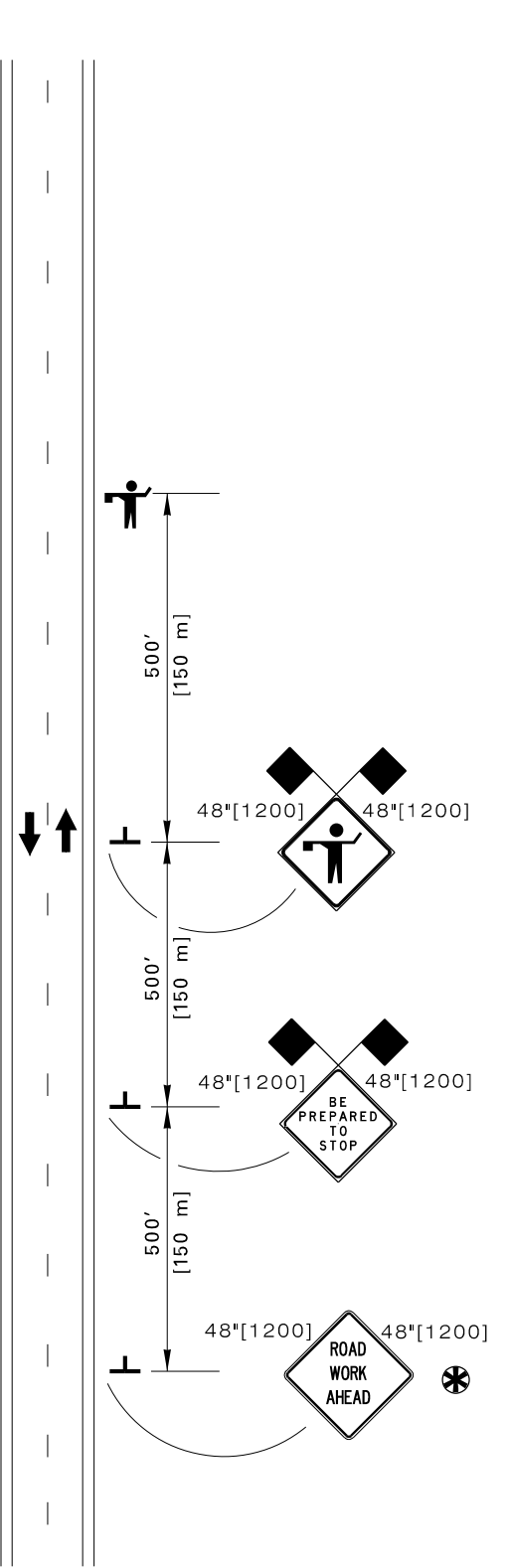
CONSTRUCTION TRAFFIC  
 CONTROL TWO LANE

STANDARD PLAN

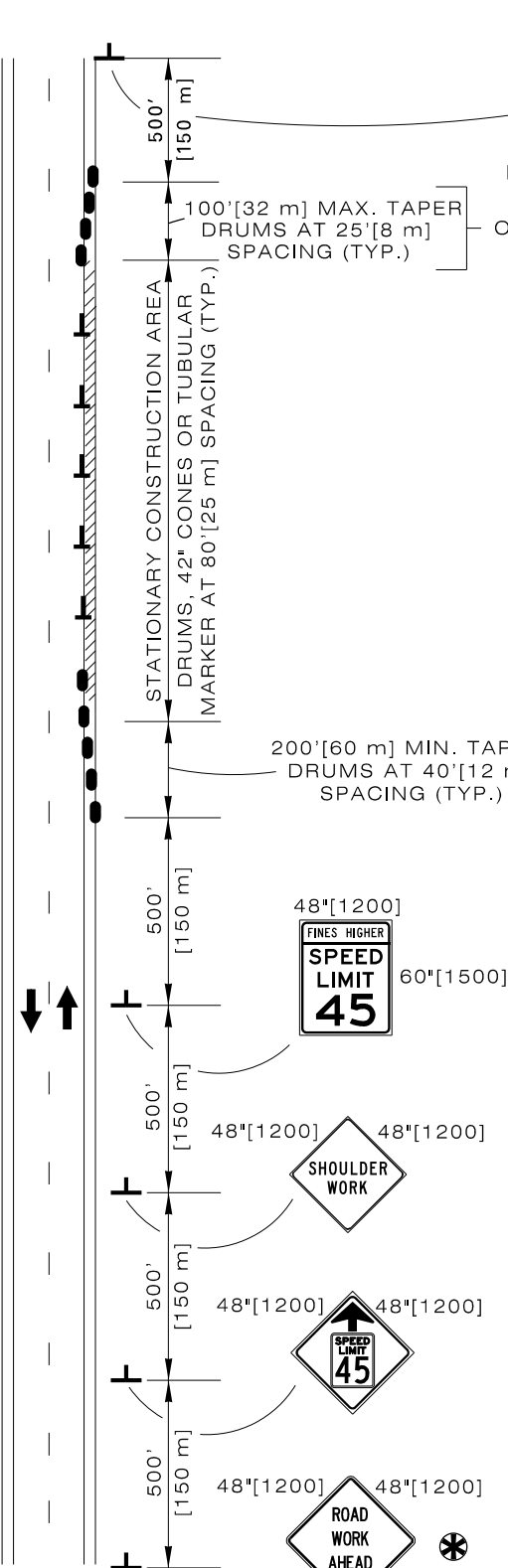
STANDARD PLAN NUMBER  
**703-2F**  
 SHEET 1 of 9  
 Issued by: TRAFFIC PROGRAM  
 Date Issued: OCTOBER, 2016



◆ **EQUIPMENT CROSSING STOP CONTROL**








◆ **TYPICAL FLAGGER STATION SIGNING**



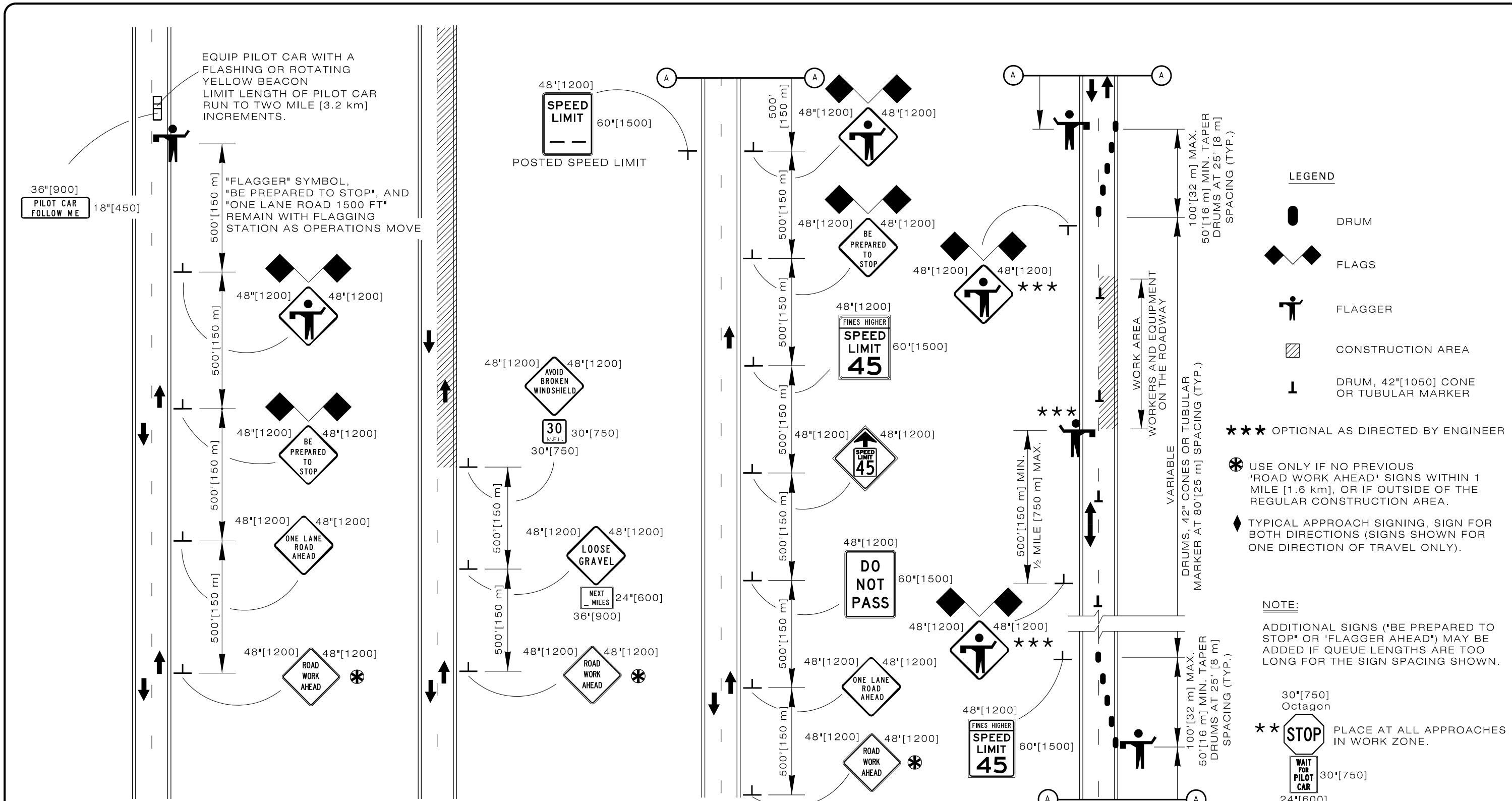
◆ **SHOULDER REPAIR WORK 10' [3 m] MIN. LANE WIDTH**

**LEGEND**

-  DRUM
-  FLAGS
-  FLAGGER
-  CONSTRUCTION AREA
-  DRUM, 42" [1050] CONE OR TUBULAR MARKER

⊛ USE ONLY IF NO PREVIOUS "ROAD WORK AHEAD" SIGNS WITHIN 1 MILE [1.6 km], OR IF OUTSIDE OF THE REGULAR CONSTRUCTION AREA.

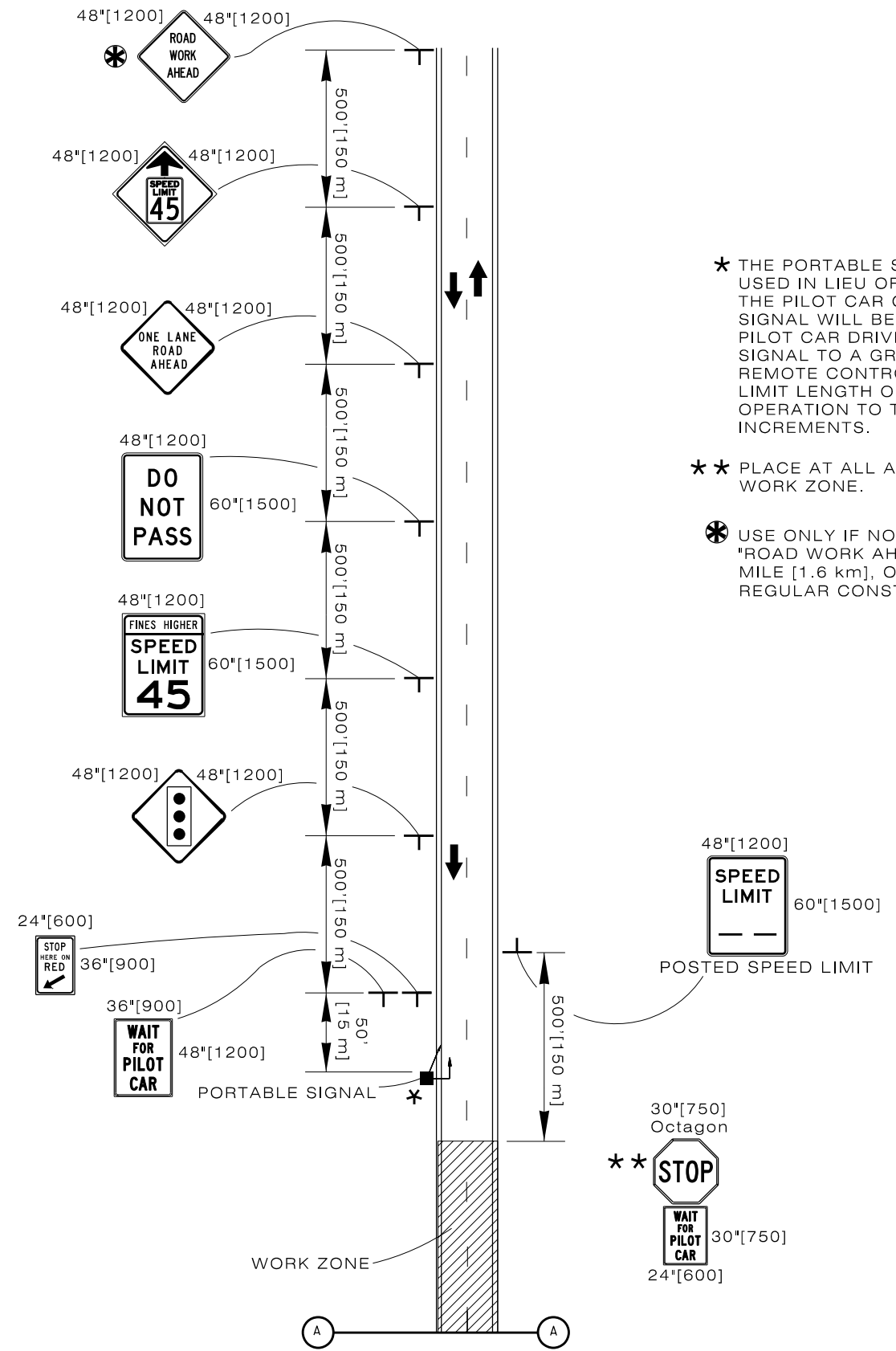
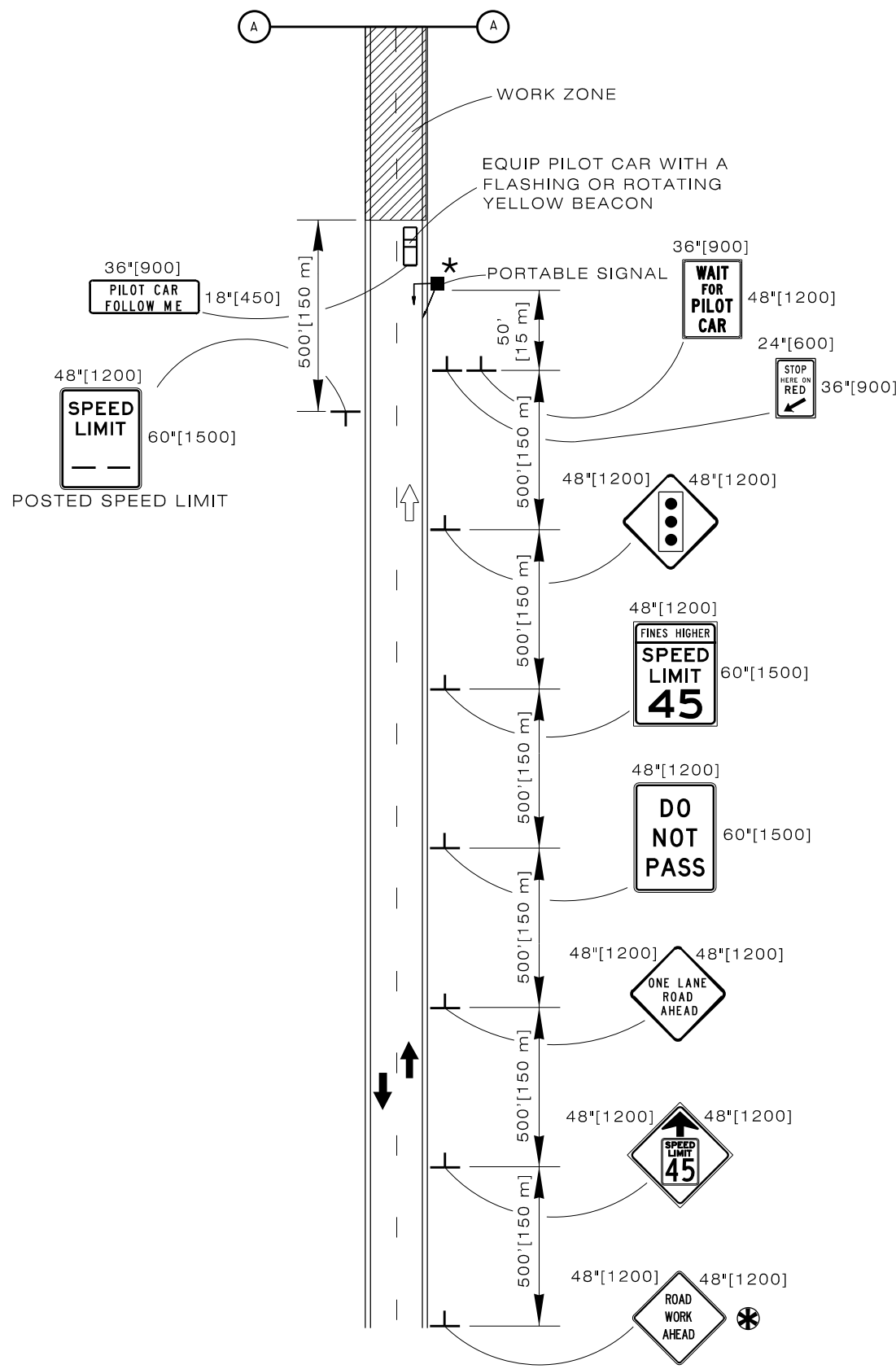
◆ TYPICAL APPROACH SIGNING, SIGN FOR BOTH DIRECTIONS (SIGNS SHOWN FOR ONE DIRECTION OF TRAVEL ONLY).



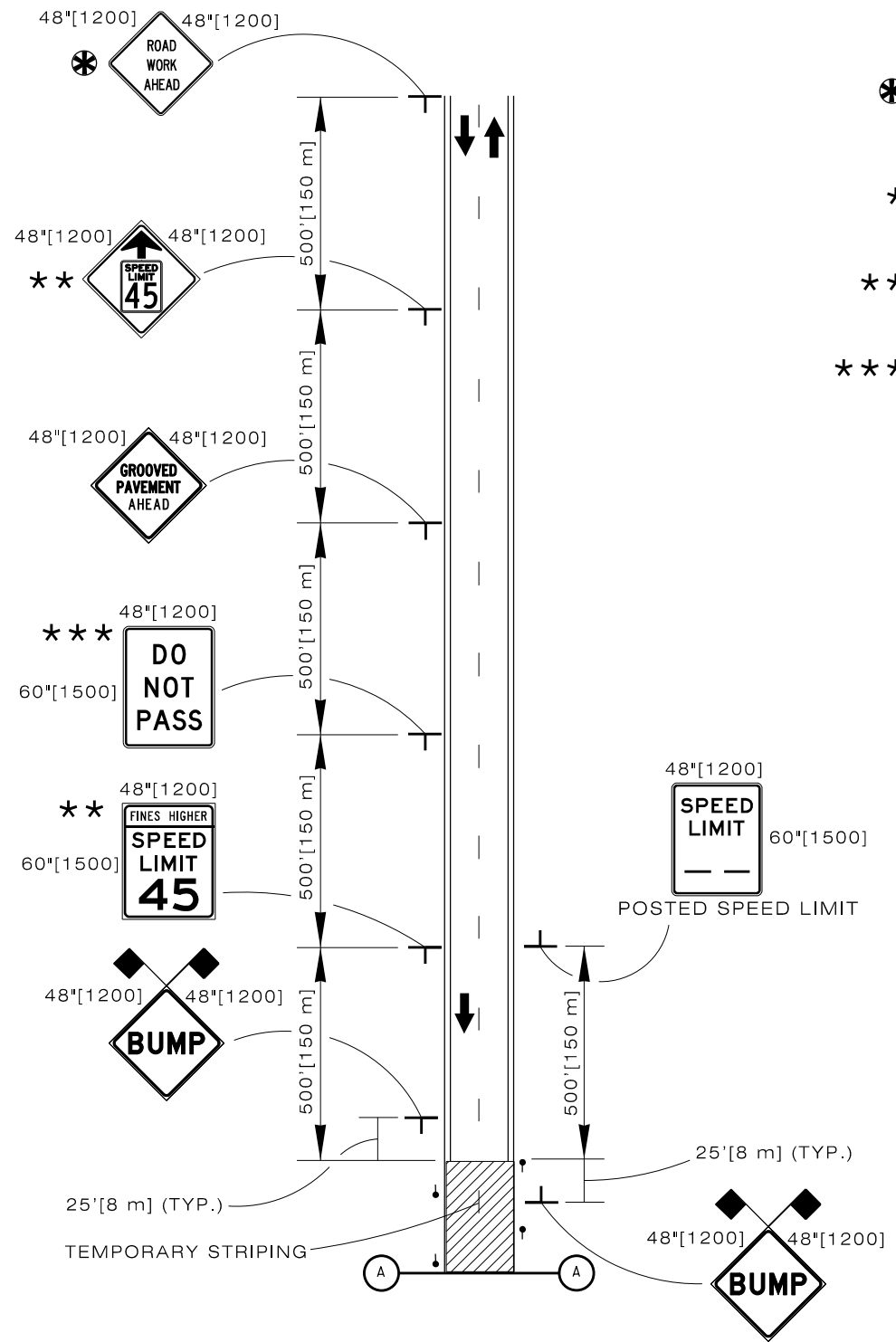
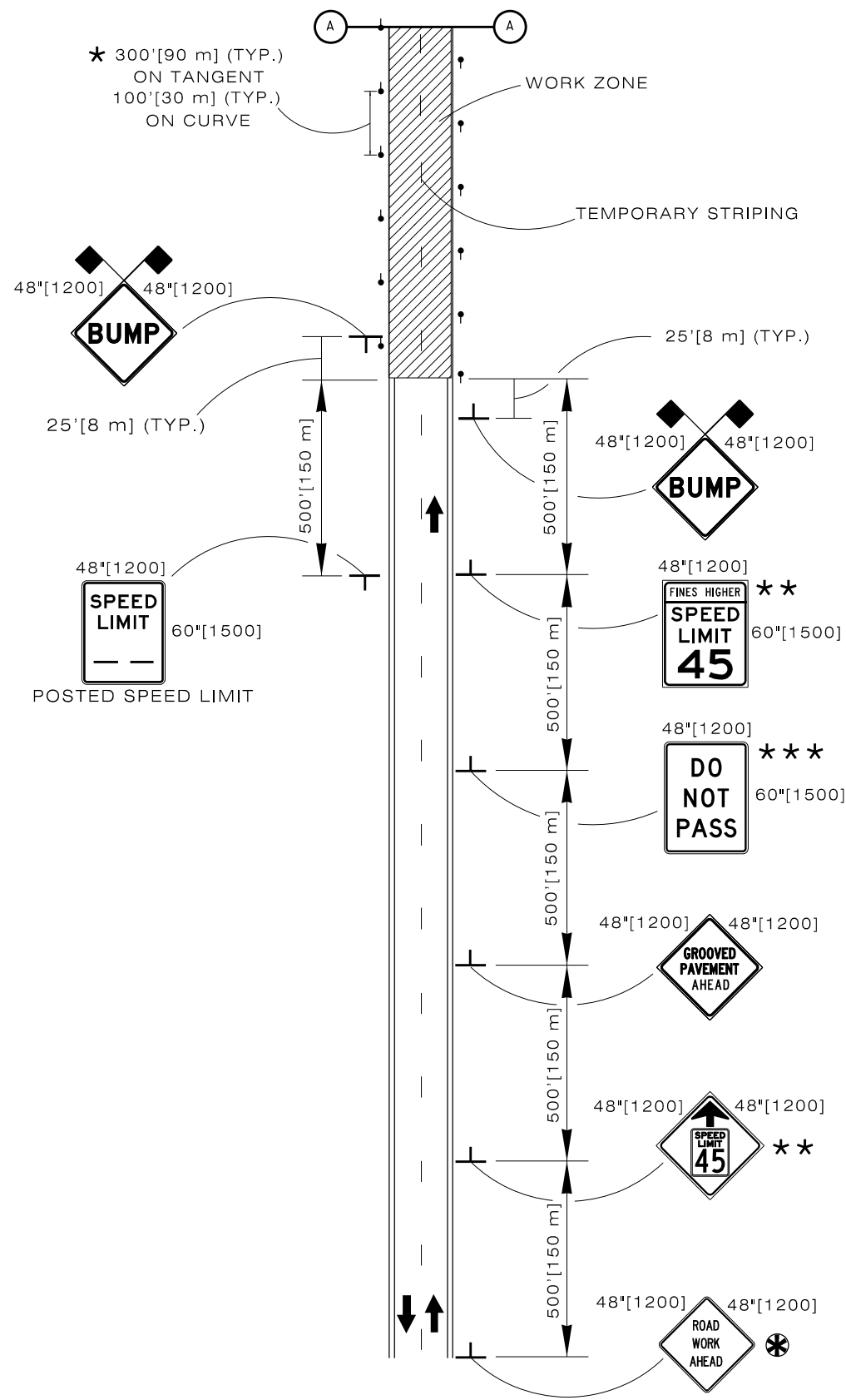
◆ PILOT CAR OPERATIONS  
MOBILE OR STATIONARY WORK SITE

◆ ROADWAY CHIP SEALING

◆ OPERATIONS FOR ONE LANE  
CLOSURE ON A TWO LANE ROAD



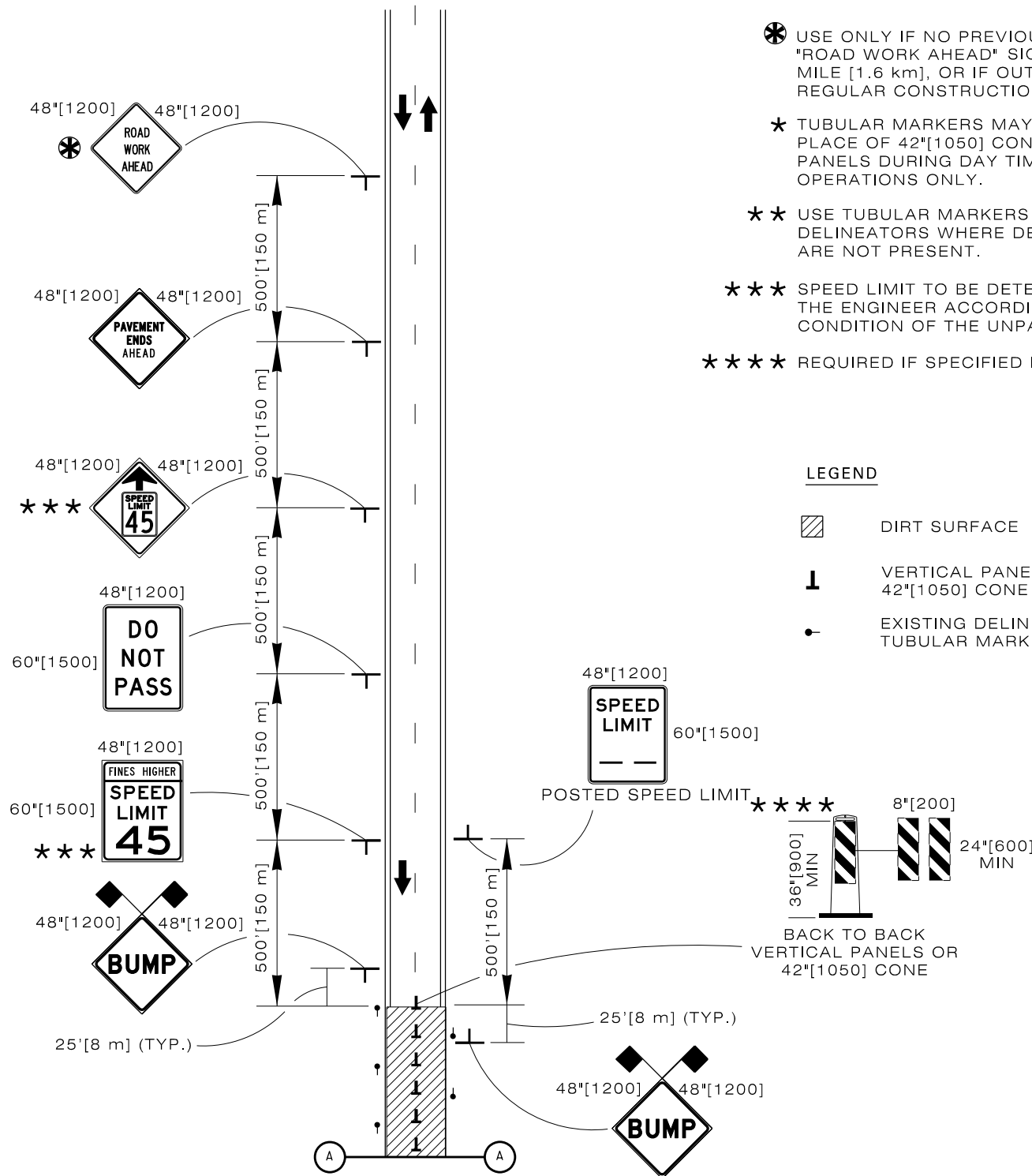
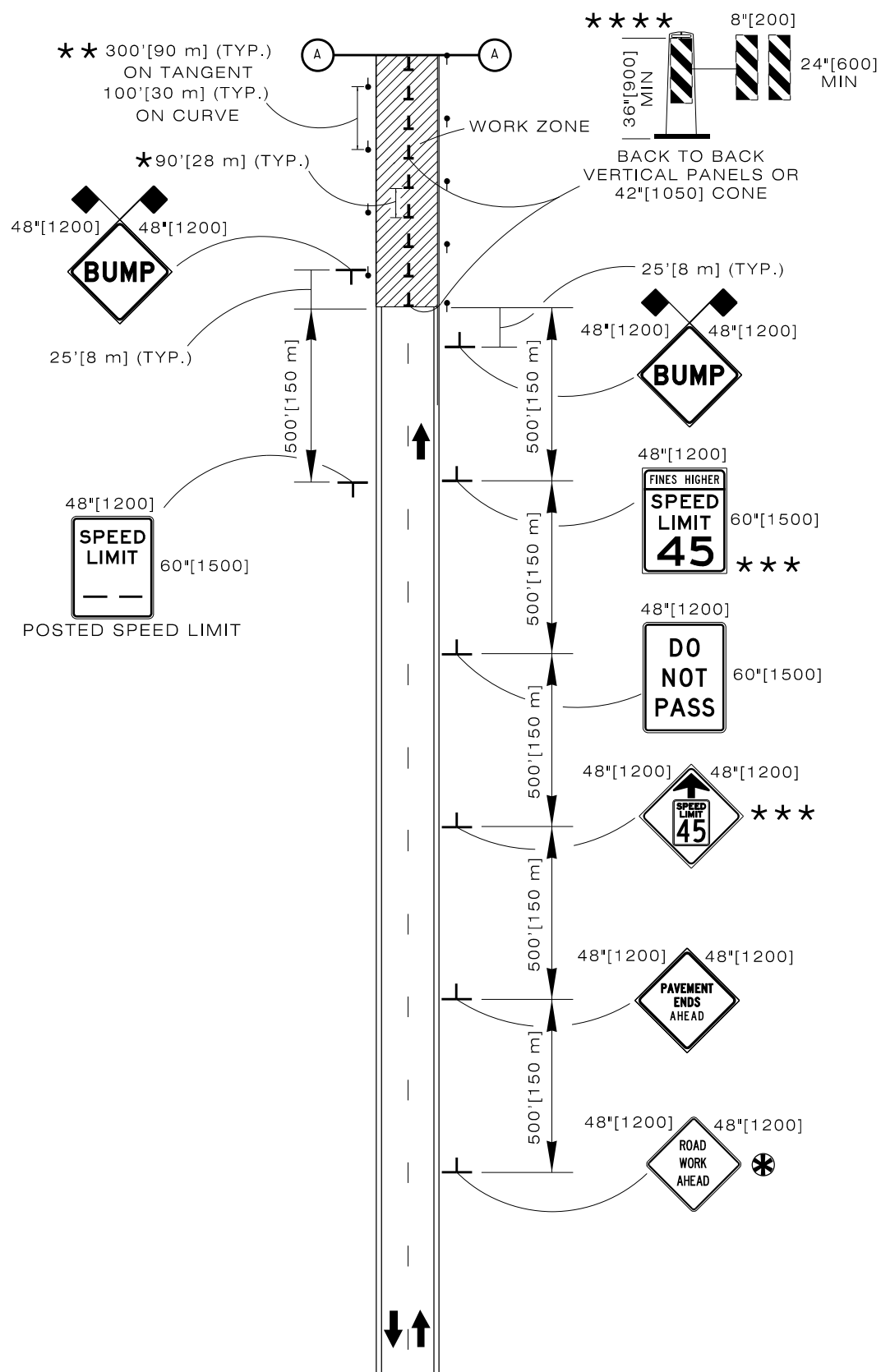
- \* THE PORTABLE SIGNAL MAY BE USED IN LIEU OF FLAGGERS FOR THE PILOT CAR OPERATION. THE SIGNAL WILL BE RED UNTIL THE PILOT CAR DRIVER CHANGES THE SIGNAL TO A GREEN LIGHT WITH REMOTE CONTROL. LIMIT LENGTH OF PILOT CAR OPERATION TO TWO MILE [3.2 km] INCREMENTS.
- \*\* PLACE AT ALL APPROACHES IN WORK ZONE.
- \* USE ONLY IF NO PREVIOUS 'ROAD WORK AHEAD' SIGNS WITHIN 1 MILE [1.6 km], OR IF OUTSIDE OF THE REGULAR CONSTRUCTION AREA.



- ⊗ USE ONLY IF NO PREVIOUS "ROAD WORK AHEAD" SIGNS WITHIN 1 MILE [1.6 km], OR IF OUTSIDE OF THE REGULAR CONSTRUCTION AREA.
- \* USE TUBULAR MARKERS IN PLACE OF DELINEATORS WHERE DELINEATORS ARE NOT PRESENT.
- \*\* SPEED LIMIT TO BE DETERMINED BY THE ENGINEER ACCORDING TO THE CONDITION OF THE MILLED SURFACE.
- \*\*\* USE IF BARRIERS ARE NOT MARKED.

**LEGEND**

- GROOVED (MILLED) SURFACE
- EXISTING DELINEATORS OR TUBULAR MARKERS



- ⊗ USE ONLY IF NO PREVIOUS "ROAD WORK AHEAD" SIGNS WITHIN 1 MILE [1.6 km], OR IF OUTSIDE OF THE REGULAR CONSTRUCTION AREA.
- \* TUBULAR MARKERS MAY BE USED IN PLACE OF 42"[1050] CONES OR VERTICAL PANELS DURING DAY TIME OPERATIONS ONLY.
- \*\* USE TUBULAR MARKERS IN PLACE OF DELINEATORS WHERE DELINEATORS ARE NOT PRESENT.
- \*\*\* SPEED LIMIT TO BE DETERMINED BY THE ENGINEER ACCORDING TO THE CONDITION OF THE UNPAVED SURFACE.
- \*\*\*\* REQUIRED IF SPECIFIED IN CONTRACT.

**LEGEND**

- ▨ DIRT SURFACE
- ↓ VERTICAL PANELS OR 42"[1050] CONE
- EXISTING DELINEATORS OR TUBULAR MARKERS

Designed by: TRAFFIC  
 Drawn by: JTG  
 Checked by: TRAFFIC  
 Previous Dwg. No. 703-2E

TYPICAL SIGNING FOR UNPAVED SURFACE

Note: Units shown in brackets [ ] are metric and are in millimeters (mm) unless other units are shown.



WYOMING DEPARTMENT OF TRANSPORTATION



CONSTRUCTION TRAFFIC CONTROL TWO LANE

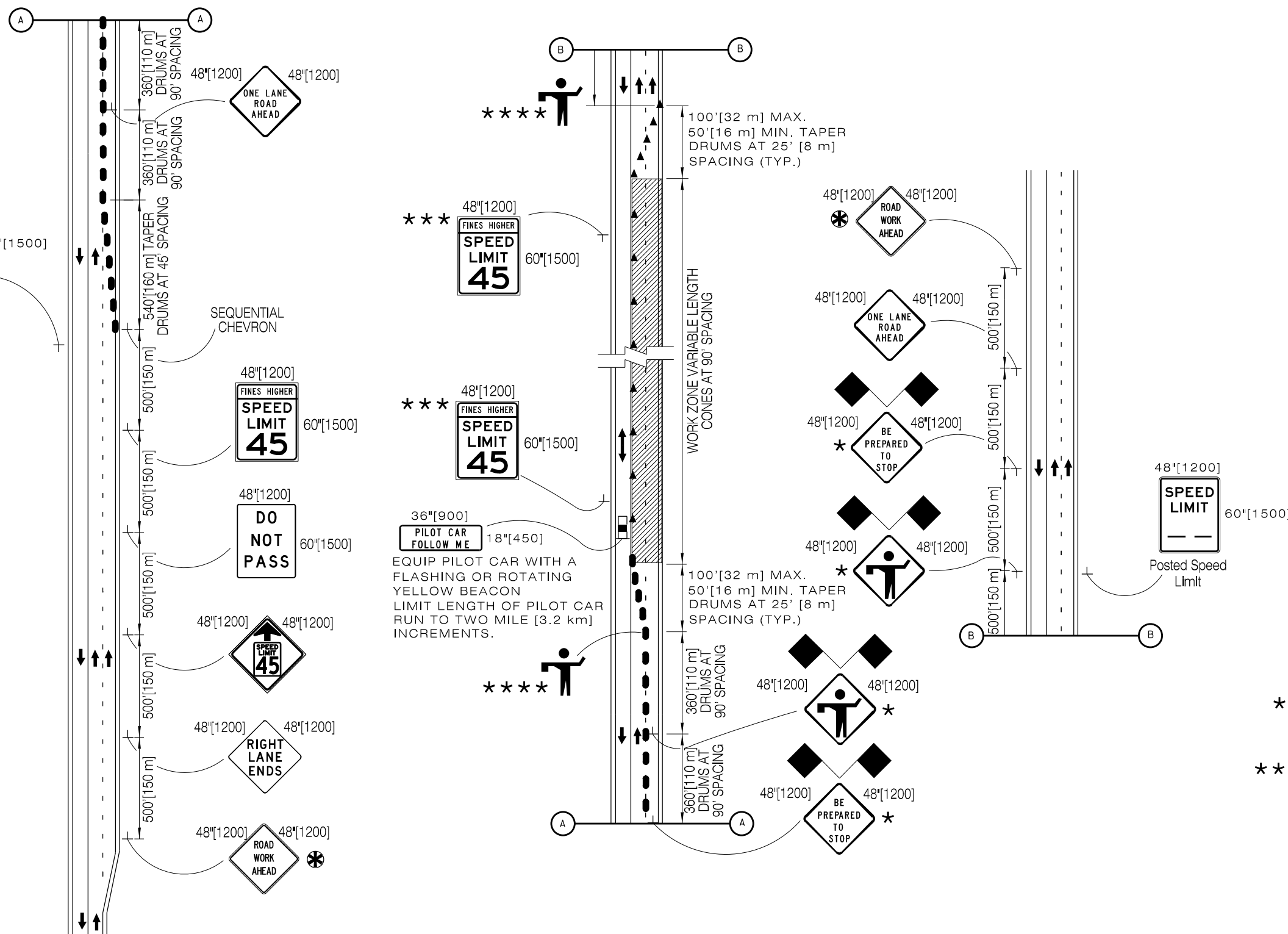
STANDARD PLAN

STANDARD PLAN NUMBER

**703-2F**

SHEET 6 of 9

Issued by: TRAFFIC PROGRAM  
 Date Issued: OCTOBER, 2016



- LEGEND**
- DRUM, 42" CONE OR TUBULAR MARKER
  - ▲ 28" CONE

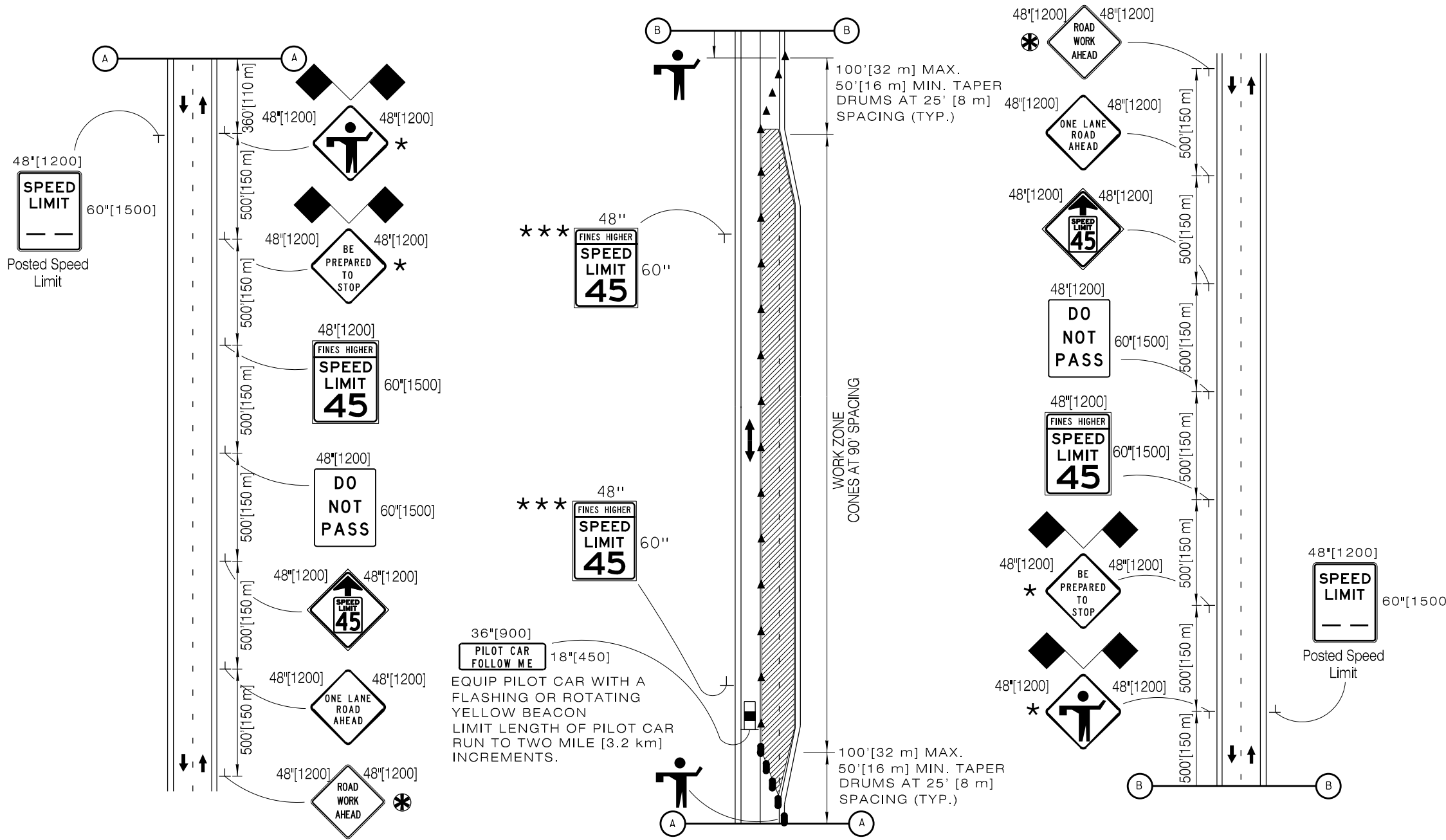
- NOTES:**
- SIGNING IS PORTABLE. DURING NON-WORKING HOURS REMOVE ALL SIGNING FROM THE ROADWAY A MINIMUM OF 35 FT.
  - REMOVE ALL TRAFFIC CONTROL AT NIGHT TO ALLOW FULL USE OF THE ROADWAY BY THE TRAVELING PUBLIC.
  - KEEP LENGTH OF PILOT CAR RUN TO A MINIMUM SO DELAY TO MOTORISTS IS NO MORE THAN 20 MINUTES.
  - ON CERTAIN APPROACHES WITHIN THE PROJECT LIMITS, ADDED FLAGGING MAY BE REQUIRED WHEN THOSE APPROACHES ARE WITHIN THE WORK AREA, AS DIRECTED BY THE ENGINEER.
  - A MINIMUM DISTANCE OF 2000 FEET MUST REMAIN OPEN BEFORE LANE ENDS TO USE PARTIAL CLOSURE, IF LESS THAN 2000 FEET CLOSE CLIMBING LANE COMPLETELY.

\* ADDITIONAL SIGNS ("BE PREPARED TO STOP" OR "FLAGGER AHEAD") MAY BE ADDED IF QUEUE LENGTHS ARE TOO LONG FOR THE SIGN SPACING SHOWN.

- \* 30" [750] Octagon
- \*\* STOP PLACE AT ALL APPROACHES IN WORK ZONE.
- \*\* WAIT FOR PILOT CAR 30" [750] 24" [600]

- \*\*\* SPEED LIMIT 45 SIGNS TO BE USED FOR FLAGGER CONTROL WHEN A PILOT CAR IS NOT PRESENT.
- \*\*\*\* FLAGGERS WITH PORTABLE TWO-WAY RADIOS MAY BE SUBSTITUTED FOR THE PILOT CAR AS APPROVED BY THE ENGINEER.

\* USE ONLY IF NO PREVIOUS "ROAD WORK AHEAD" SIGNS WITHIN 1 MILE [1.6 km], OR IF OUTSIDE OF THE REGULAR CONSTRUCTION AREA.

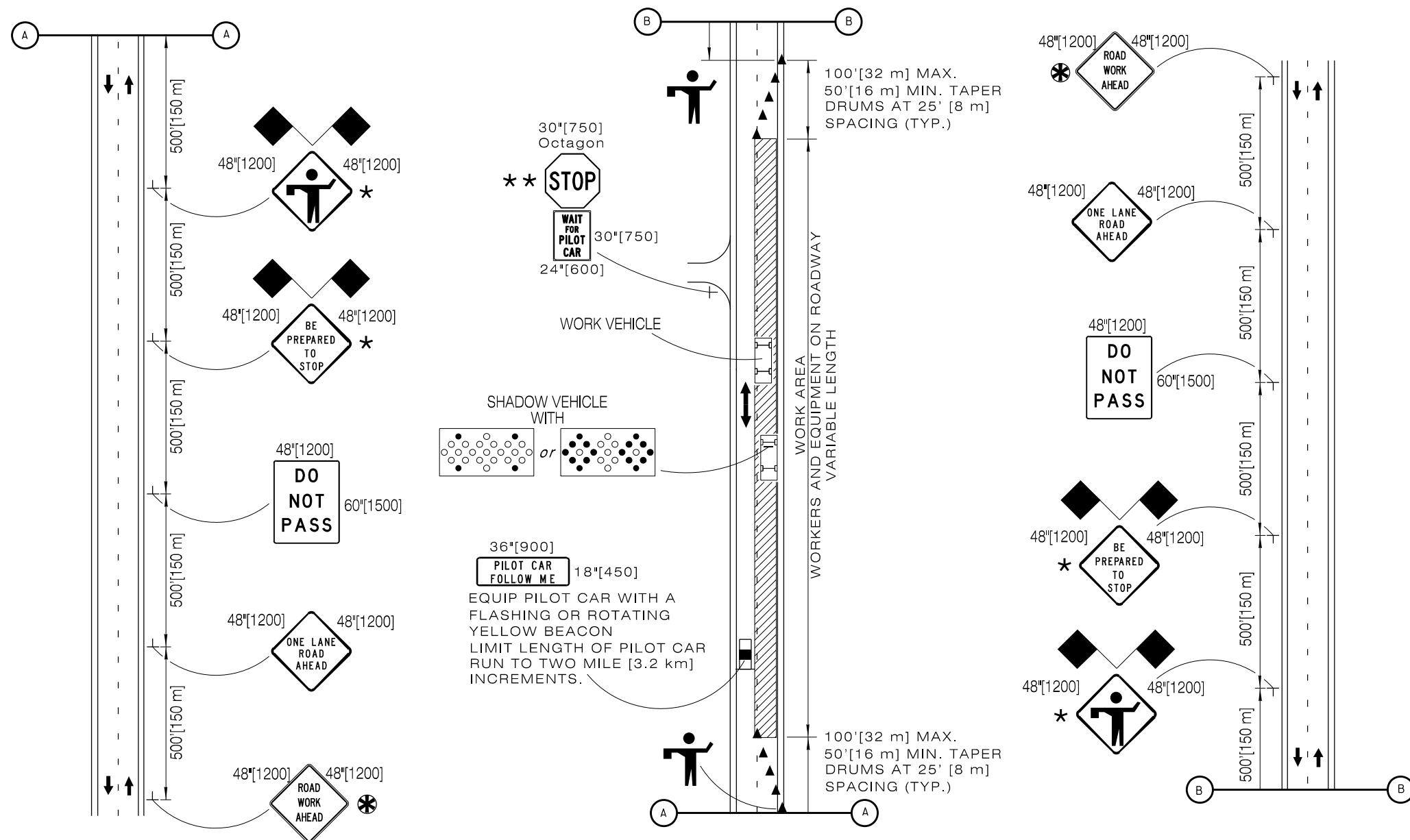


- LEGEND**
- DRUM, 42" CONE OR TUBULAR MARKER
  - ▲ 28" CONE

- NOTES:**
1. SIGNING MAY BE PORTABLE. DURING NON-WORKING HOURS REMOVE ALL SIGNING FROM THE ROADWAY A MINIMUM OF 35 FT.
  2. FLAGGERS WITH PORTABLE TWO-WAY RADIOS MAY BE SUBSTITUTED FOR THE PILOT CAR AS APPROVED BY THE ENGINEER.
  3. REMOVE ALL TRAFFIC CONTROL AT NIGHT TO ALLOW FULL USE OF THE ROADWAY BY THE TRAVELING PUBLIC.
  4. KEEP LENGTH OF PILOT CAR RUN TO A MINIMUM SO DELAY TO MOTORISTS IS NO MORE THAN 20 MINUTES.
  5. ON CERTAIN APPROACHES WITHIN THE PROJECT LIMITS, ADDED FLAGGING MAY BE REQUIRED WHEN THOSE APPROACHES ARE WITHIN THE WORK AREA, AS DIRECTED BY THE ENGINEER.

- \* ADDITIONAL SIGNS ("BE PREPARED TO STOP" OR "FLAGGER AHEAD") MAY BE ADDED IF QUEUE LENGTHS ARE TOO LONG FOR THE SIGN SPACING SHOWN.
- \*\* 30"[750] Octagon **STOP** PLACE AT ALL APPROACHES IN WORK ZONE.
- \*\* 30"[750] **WAIT FOR PILOT CAR** 24"[600]
- \*\*\* SPEED LIMIT 45 SIGNS TO BE USED FOR FLAGGER CONTROL WHEN A PILOT CAR IS NOT PRESENT.
- ⊗ USE ONLY IF NO PREVIOUS "ROAD WORK AHEAD" SIGNS WITHIN 1 MILE [1.6 km], OR IF OUTSIDE OF THE REGULAR CONSTRUCTION AREA.





**LEGEND**  
 ▲ 28" CONE

- NOTES:**
- SIGNING IS TO BE PORTABLE. DURING NON-WORKING HOURS, REMOVE ALL SIGNING FROM THE ROADWAY A MINIMUM OF 35 FT.
  - REMOVE ALL TRAFFIC CONTROL AT NIGHT TO ALLOW FULL USE OF THE ROADWAY BY THE TRAVELING PUBLIC.
  - KEEP LENGTH OF PILOT CAR RUN SO DELAY TO MOTORISTS IS NO MORE THAN 20 MINUTES.

★ ADDITIONAL SIGNS ("BE PREPARED TO STOP" OR "FLAGGER AHEAD") MAY BE ADDED IF QUEUE LENGTHS ARE TOO LONG FOR THE SIGN SPACING SHOWN.

30"[750] Octagon  
 ★★ **STOP** PLACE AT ALL APPROACHES AND CROSS ROADS IN WORK ZONE.  
 30"[750]  
 WAIT FOR PILOT CAR  
 24"[600]

⊗ USE ONLY IF NO PREVIOUS "ROAD WORK AHEAD" SIGNS WITHIN 1 MILE [1.6 km], OR IF OUTSIDE OF THE REGULAR CONSTRUCTION AREA.