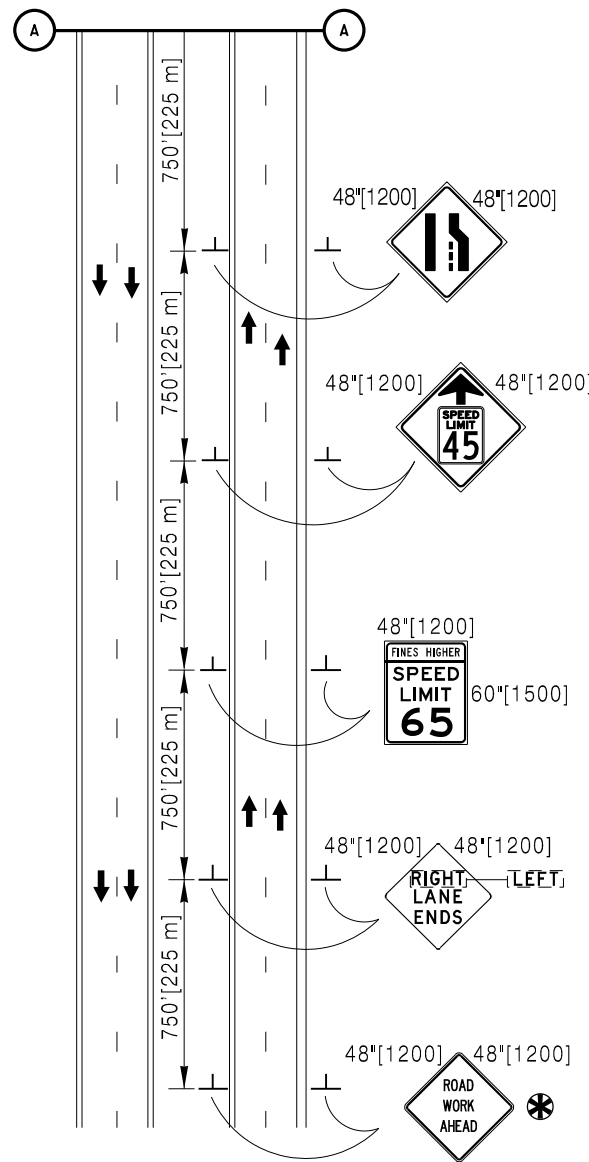
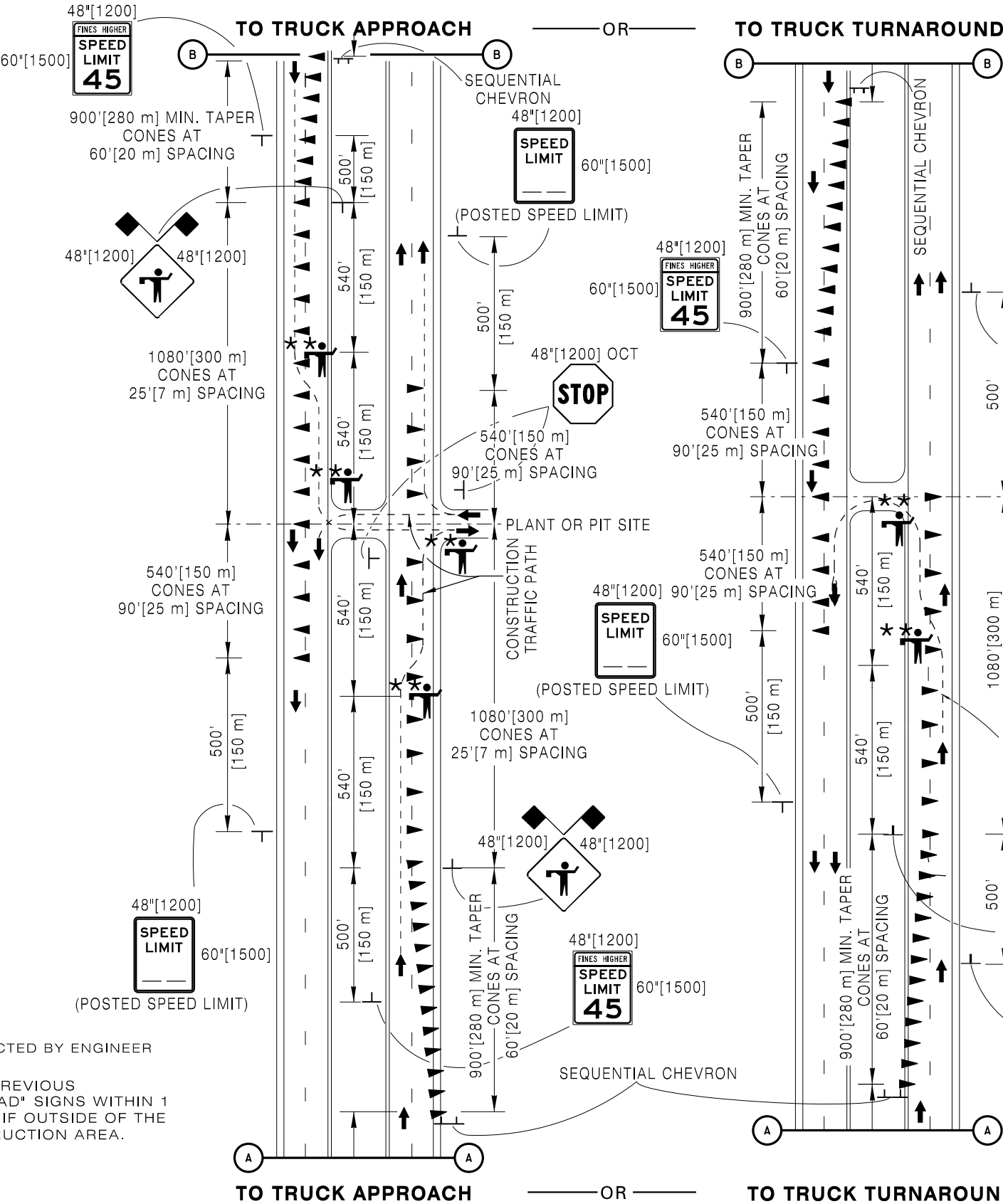


TO TRUCK TURNAROUND  
OR  
TO TRUCK APPROACH

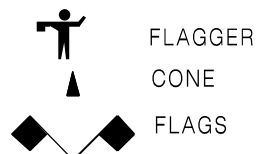


\*\* OPTIONAL AS DIRECTED BY ENGINEER

USE ONLY IF NO PREVIOUS  
"ROAD WORK AHEAD" SIGNS WITHIN 1  
MILE [1.6 km], OR IF OUTSIDE OF THE  
REGULAR CONSTRUCTION AREA.



LEGEND



Designed by: TRAFFIC  
Drawn by: JTG  
Checked by: TRAFFIC  
Previous Dwg. No.  
703-3F

TYPICAL TRAFFIC CONTROL FOR  
CONSTRUCTION SITE ACCESS

Note: Units shown in brackets [ ] are metric and are in millimeters (mm) unless other units are shown.



CONSTRUCTION TRAFFIC  
CONTROL FOUR LANE

STANDARD PLAN

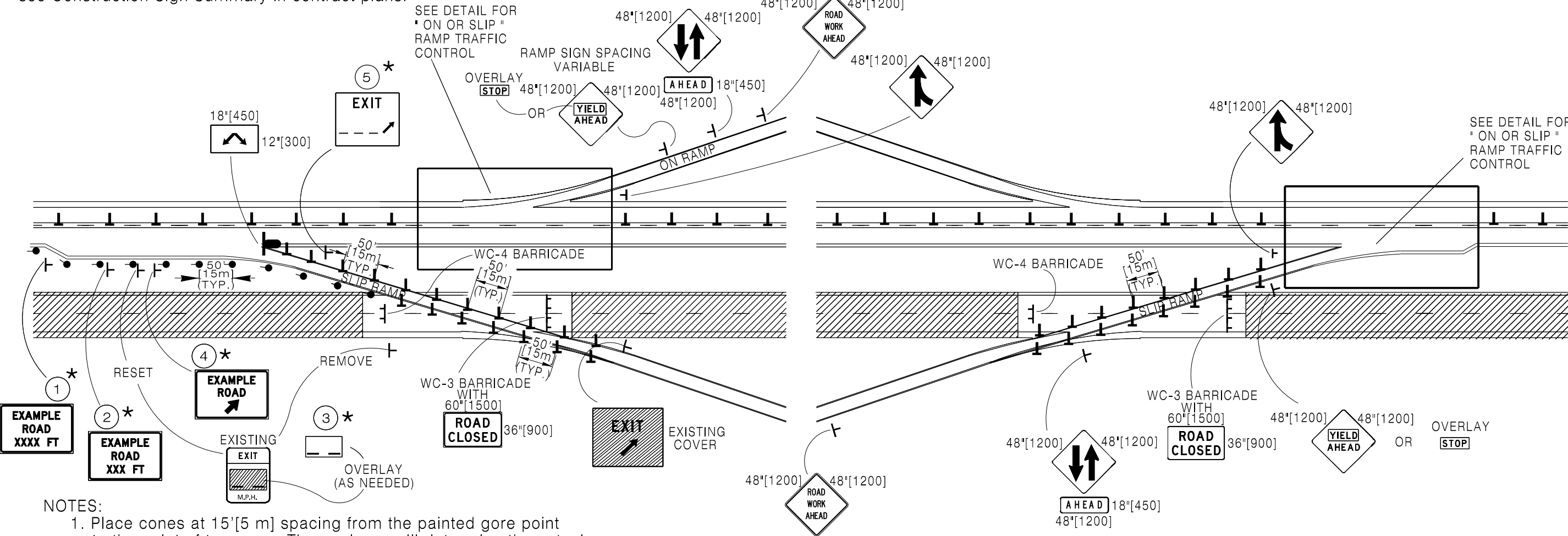
STANDARD PLAN NUMBER  
**703-3G**  
SHEET 1 of 10  
Issued by: TRAFFIC PROGRAM  
Date Issued: OCTOBER, 2016



NOTE:  
For the Construction Signs numbered 1, 2, 3, 4 and 5,  
see Construction Sign Summary in contract plans.

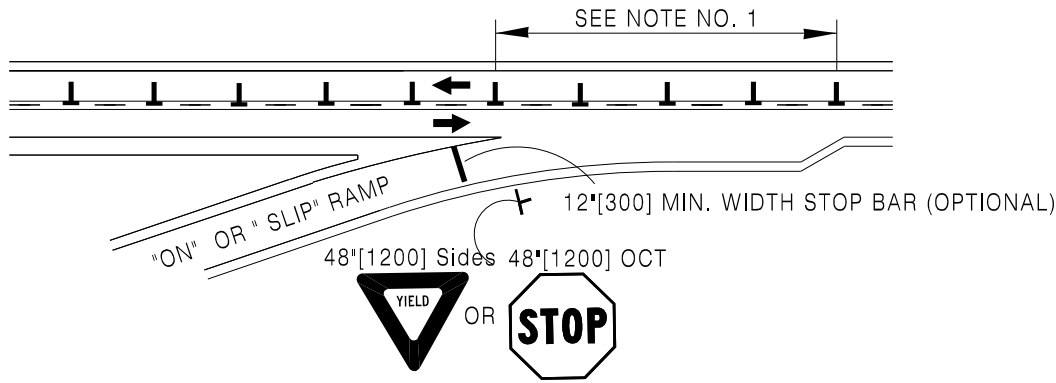
"ON OR OFF SLIP" RAMPS

\* THESE SIGNS ARE CONTRACTOR FURNISHED. THE TRAFFIC PROGRAM  
OF WYDOT FURNISHES, UPON REQUEST OF THE THE CONTRACTOR,  
SIGN FABRICATION LAYOUT SHEETS.

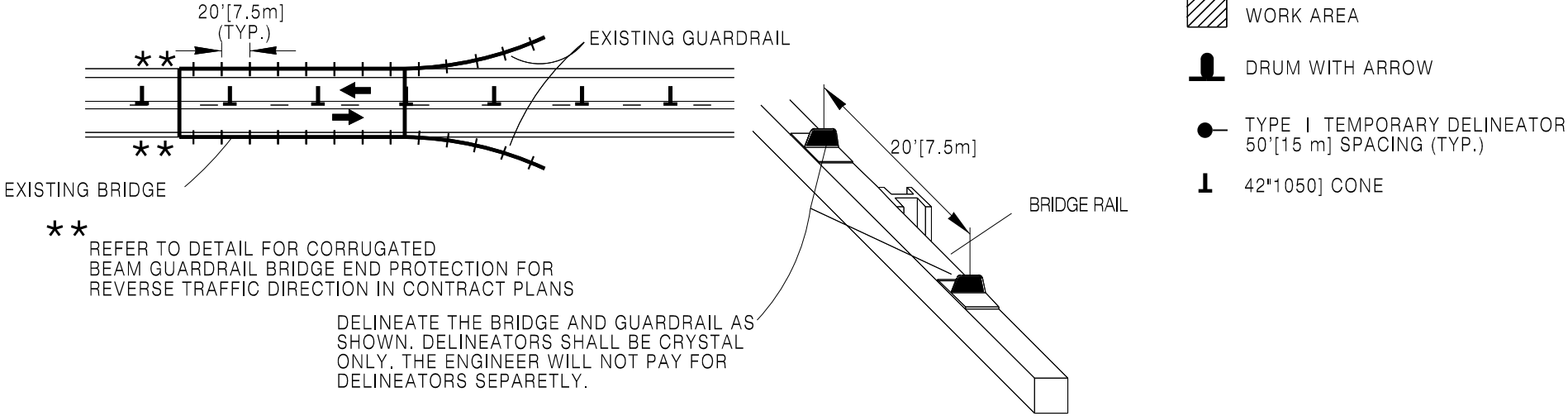


- NOTES:
1. Place cones at 15'[5 m] spacing from the painted gore point to the point of tangency. The engineer will determine the actual placement and number.
  2. Place the Two Way Traffic Sign, Speed Limit Sign, and Do Not Pass sign sequence after each on ramp.

DETAIL FOR "ON" OR "SLIP" RAMP TRAFFIC CONTROL



DETAIL FOR BRIDGE END PROTECTION  
FOR REVERSE TRAFFIC DIRECTION



Designed by: TRAFFIC  
Drawn by: JTG  
Checked by: TRAFFIC  
Previous Dwg. No. 703-3F

TWO WAY TRAFFIC ON ONE ROADWAY  
OF A DIVIDED HIGHWAY  
(CHANNELIZING DEVICES THROUGH PROJECT)

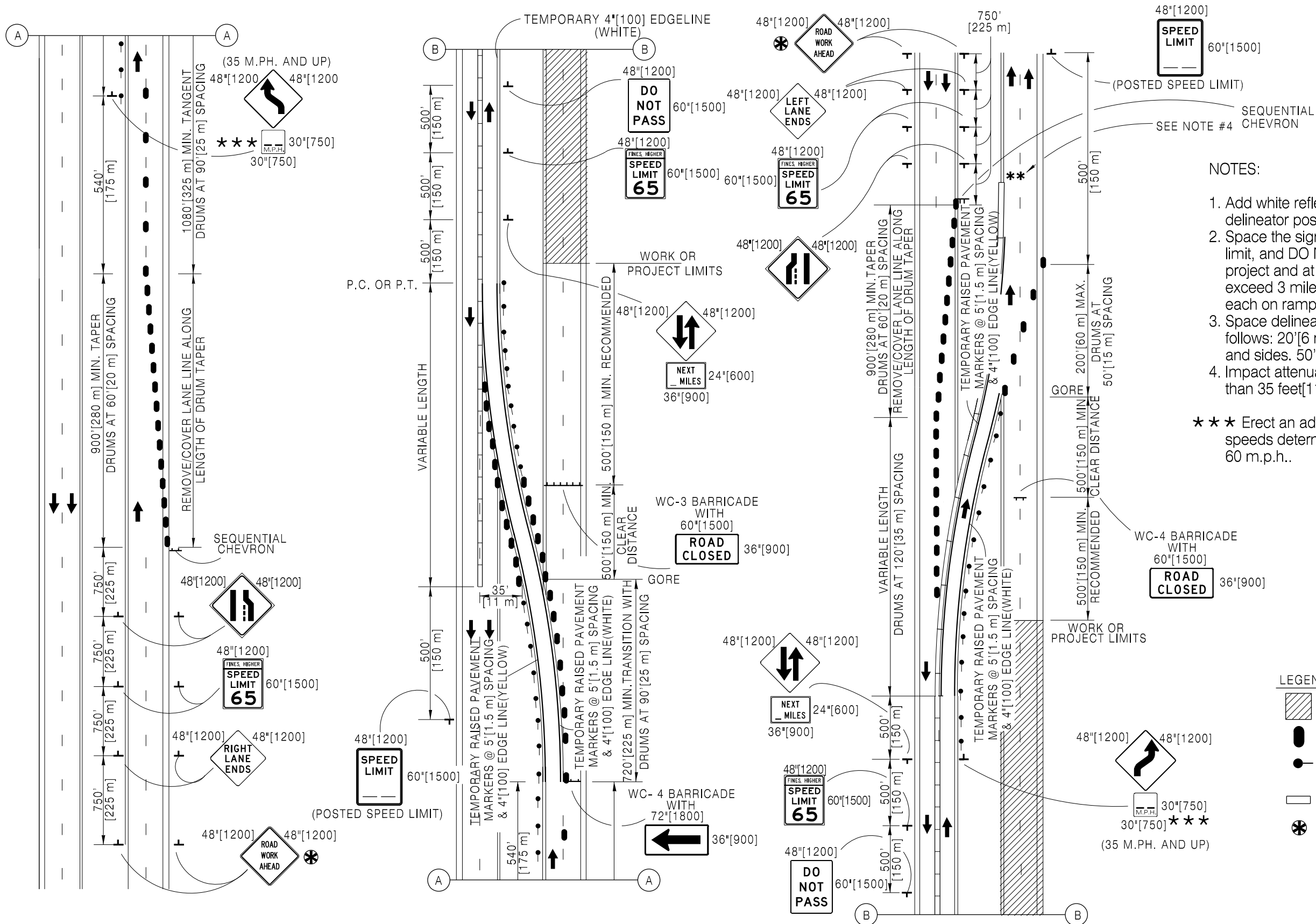
Note: Units shown in brackets [ ] are metric and are in millimeters (mm) unless other units are shown.



CONSTRUCTION TRAFFIC  
CONTROL FOUR LANE

STANDARD PLAN

STANDARD PLAN NUMBER  
**703-3G**  
SHEET 3 of 10  
Issued by: TRAFFIC PROGRAM  
Date Issued: OCTOBER, 2016



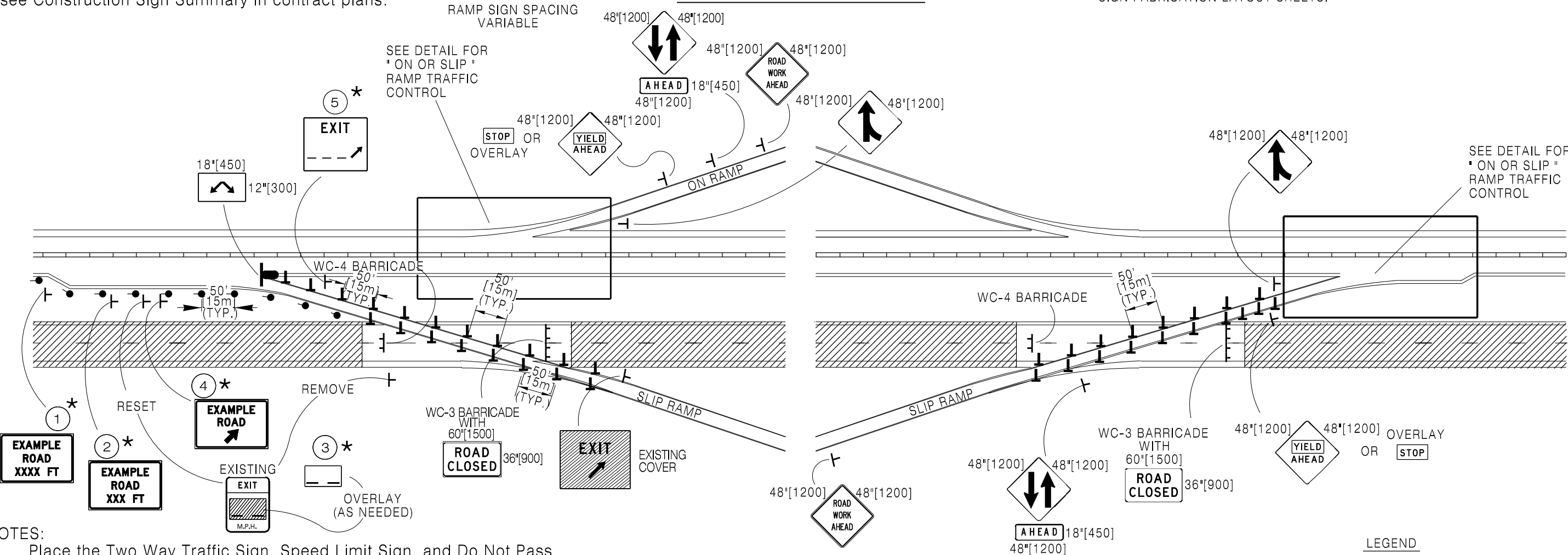
- NOTES:
1. Add white reflective delineators to the median delineator posts for the reverse flow of traffic.
  2. Space the sign sequence "two way traffic, speed limit, and DO NOT PASS" at the beginning of the project and at the middle of the project but not to exceed 3 miles[4.8 km]. Place this sequence after each on ramp.
  3. Space delineation on temporary concrete barrier as follows: 20'[6 m] through transitions or crossovers, top and sides. 50'[15 m] spacing on tangent, top and sides.
  4. Impact attenuator required if median is less than 35 feet[11 m].
- \*\*\* Erect an advisory speed limit plate for cross-over speeds determined by the engineer to be less than 60 m.p.h..

- LEGEND
- WORK AREA
  - DRUM
  - TYPE I TEMPORARY DELINEATOR 50'[15 m] SPACING (TYP.)
  - TEMPORARY CONCRETE BARRIER
  - USE ONLY IF NO PREVIOUS "ROAD WORK AHEAD" SIGNS WITHIN 1 MILE [1.6 km], OR IF OUTSIDE OF THE REGULAR CONSTRUCTION AREA.

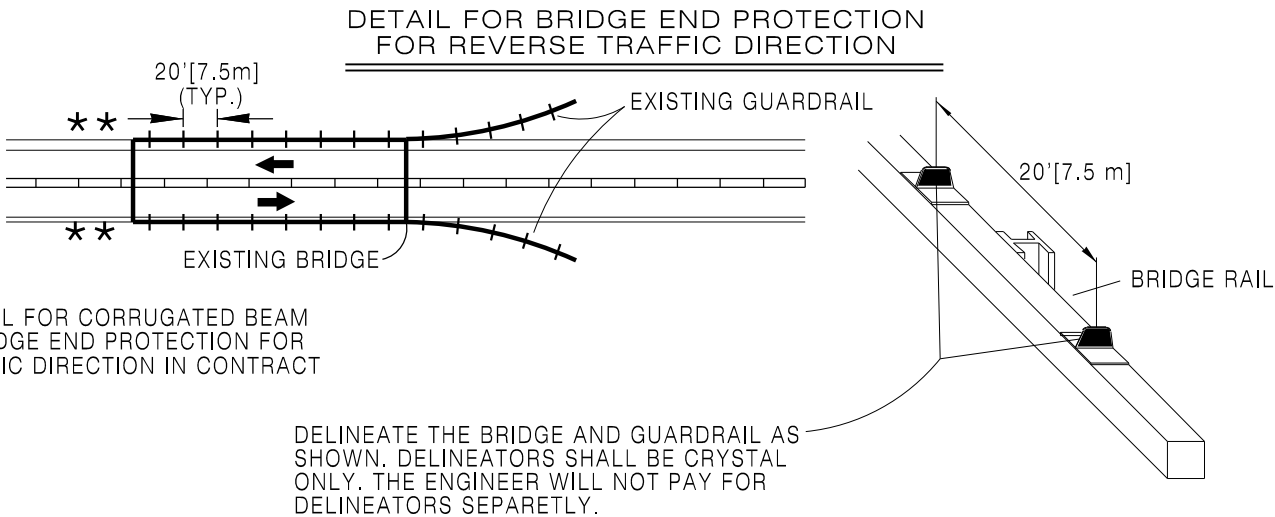
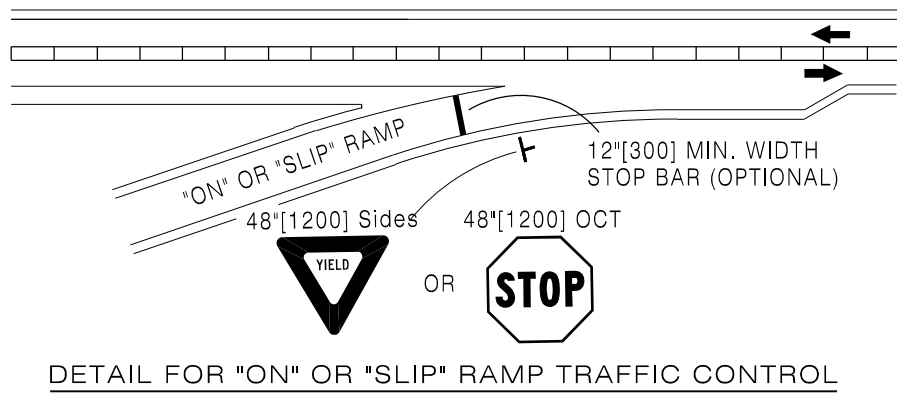
NOTE:  
For the Construction Signs numbered 1, 2, 3, 4 and 5,  
see Construction Sign Summary in contract plans.

★ THESE SIGNS ARE CONTRACTOR FURNISHED. THE TRAFFIC PROGRAM  
OF WYDOT FURNISHES, UPON REQUEST OF THE THE CONTRACTOR,  
SIGN FABRICATION LAYOUT SHEETS.

"ON OR OFF" SLIP RAMPS



NOTES:  
Place the Two Way Traffic Sign, Speed Limit Sign, and Do Not Pass sign sequence after each On Ramp.



★ ★ REFER TO DETAIL FOR CORRUGATED BEAM GUARDRAIL BRIDGE END PROTECTION FOR REVERSE TRAFFIC DIRECTION IN CONTRACT PLANS

Designed by: TRAFFIC  
Drawn by: JTG  
Checked by: TRAFFIC  
Previous Dwg. No. 703-3F

TWO WAY TRAFFIC ON ONE ROADWAY  
OF A DIVIDED HIGHWAY  
(CONCRETE BARRIER THROUGH PROJECT)

Note: Units shown in brackets [ ] are metric and are in millimeters (mm) unless other units are shown.



CONSTRUCTION TRAFFIC  
CONTROL FOUR LANE

STANDARD PLAN

STANDARD PLAN NUMBER  
**703-3G**  
SHEET 5 of 10  
Issued by: TRAFFIC PROGRAM  
Date Issued: OCTOBER, 2016

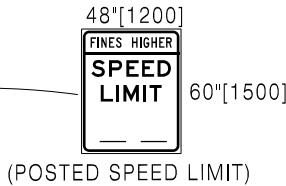
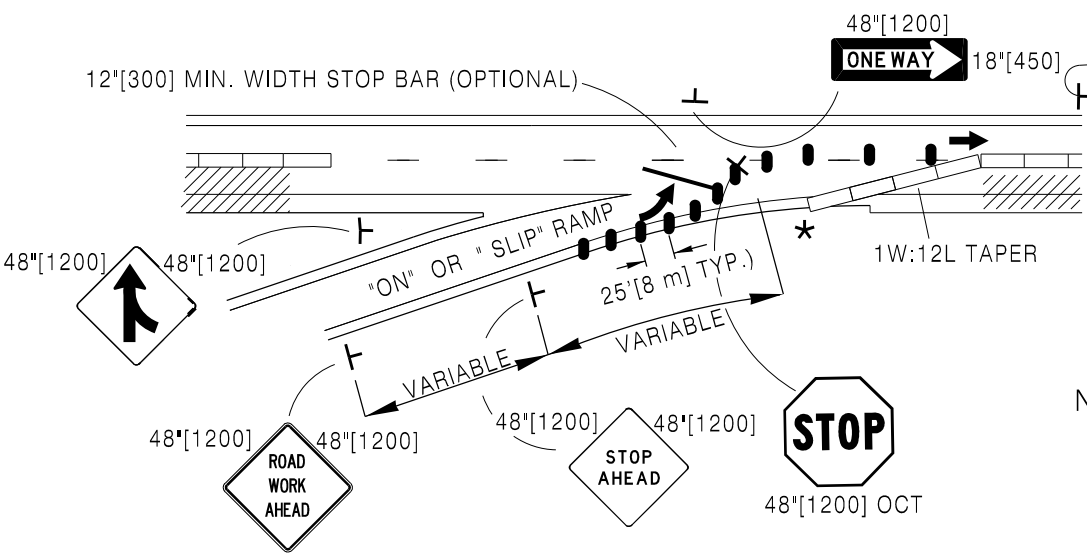
TEMPORARY CONCRETE BARRIER

AT RAMPS

(TRAFFIC IN PASSING LANE)

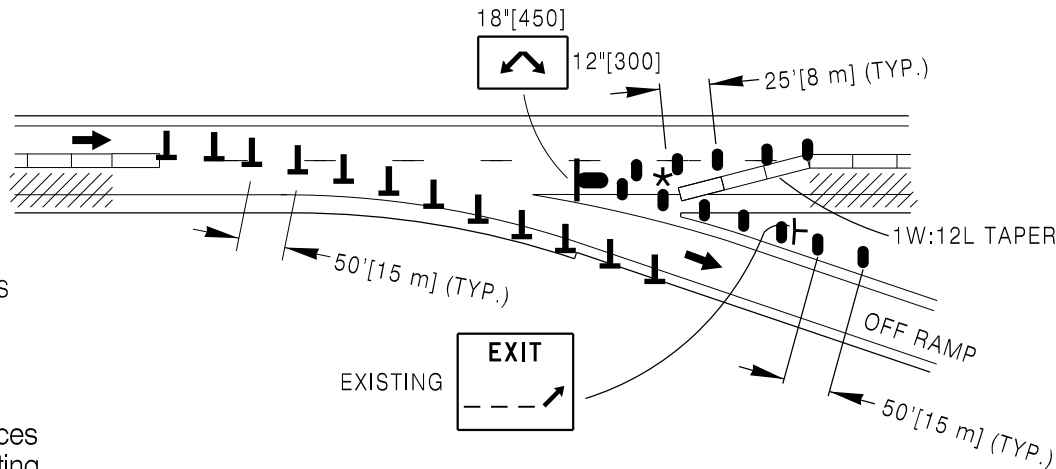
DETAIL FOR "OFF" ( RAMP LOOP ) TRAFFIC CONTROL

DETAIL FOR "ON" ( RAMP LOOP ) TRAFFIC CONTROL



\* USE A CRASH ATTENUATOR IF END OF BARRIER IS LESS THAN 15' [5 m] FROM EDGE OF ACTIVE LANE LINE.

NOTE:  
The engineer will field check temporary traffic control devices to ensure adequate sight distance, conforming to the existing geometry, safety, etc..



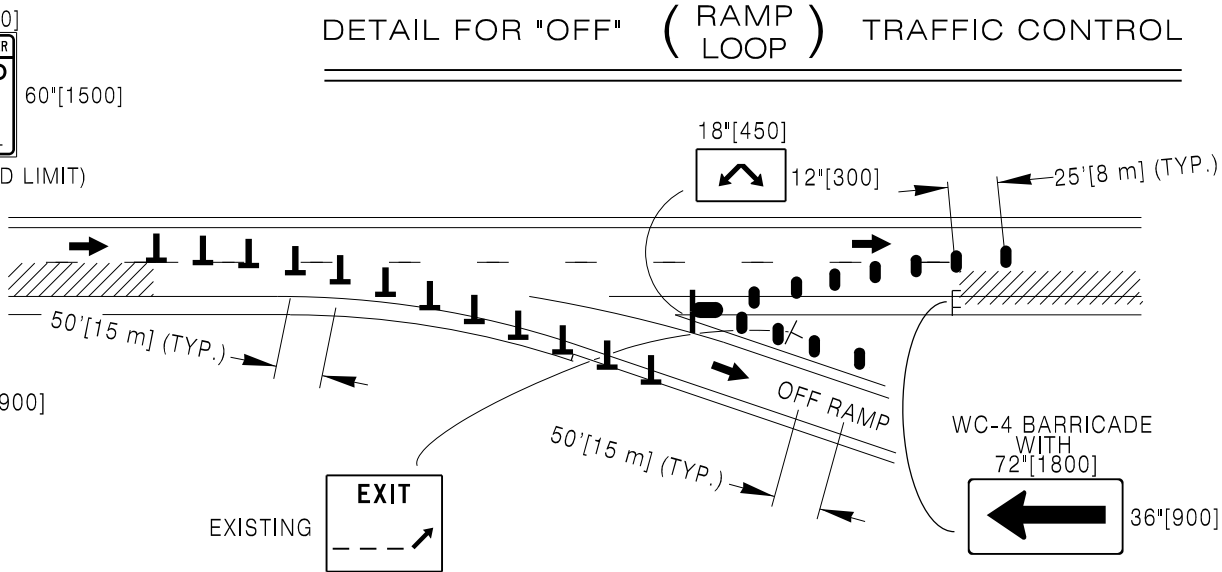
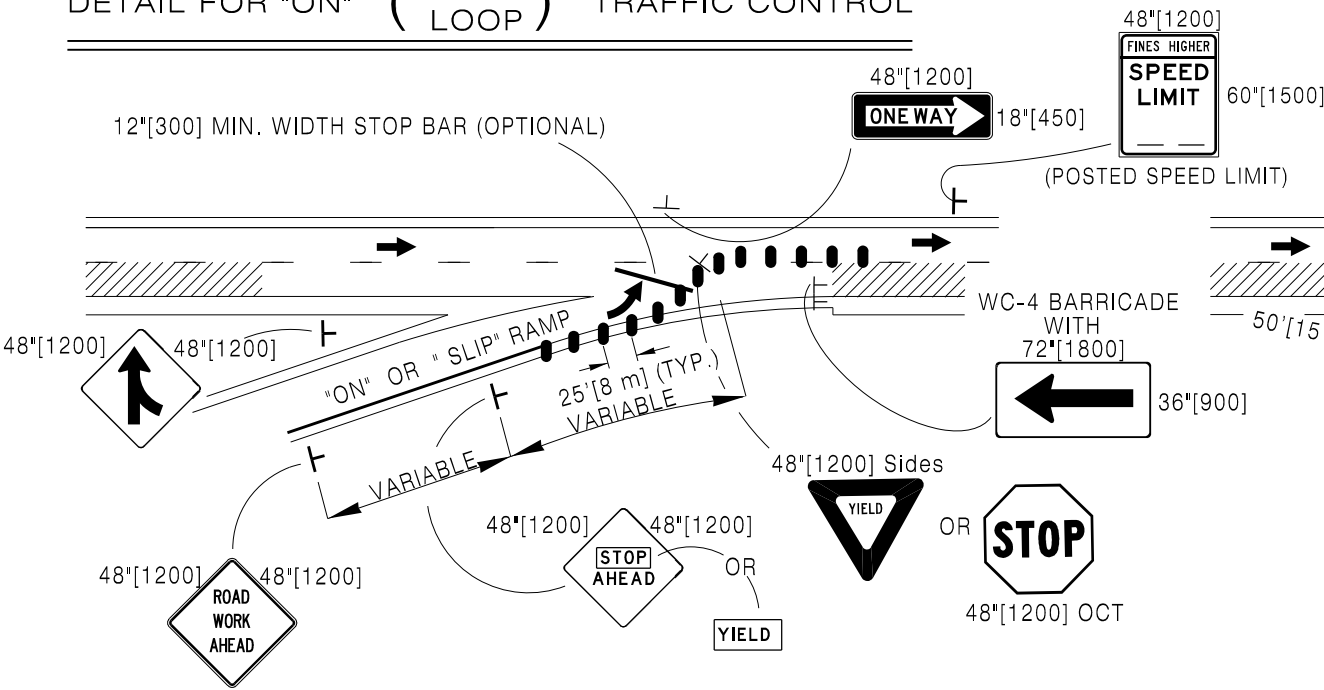
CHANNELIZING DEVICES

AT RAMPS

(TRAFFIC IN PASSING LANE)

DETAIL FOR "OFF" ( RAMP LOOP ) TRAFFIC CONTROL

DETAIL FOR "ON" ( RAMP LOOP ) TRAFFIC CONTROL



LEGEND

- WORK AREA
- DRUM
- TEMPORARY CONCRETE BARRIER
- DRUM WITH ARROW
- 42" [1050] CONE

Designed by: TRAFFIC  
Drawn by: JTG  
Checked by: TRAFFIC  
Previous Dwg. No. 703-3F

TEMPOARY CONCRETE BARRIER AND  
CHANNELIZING DEVICES AT RAMPS  
(TRAFFIC IN PASSING LANE)

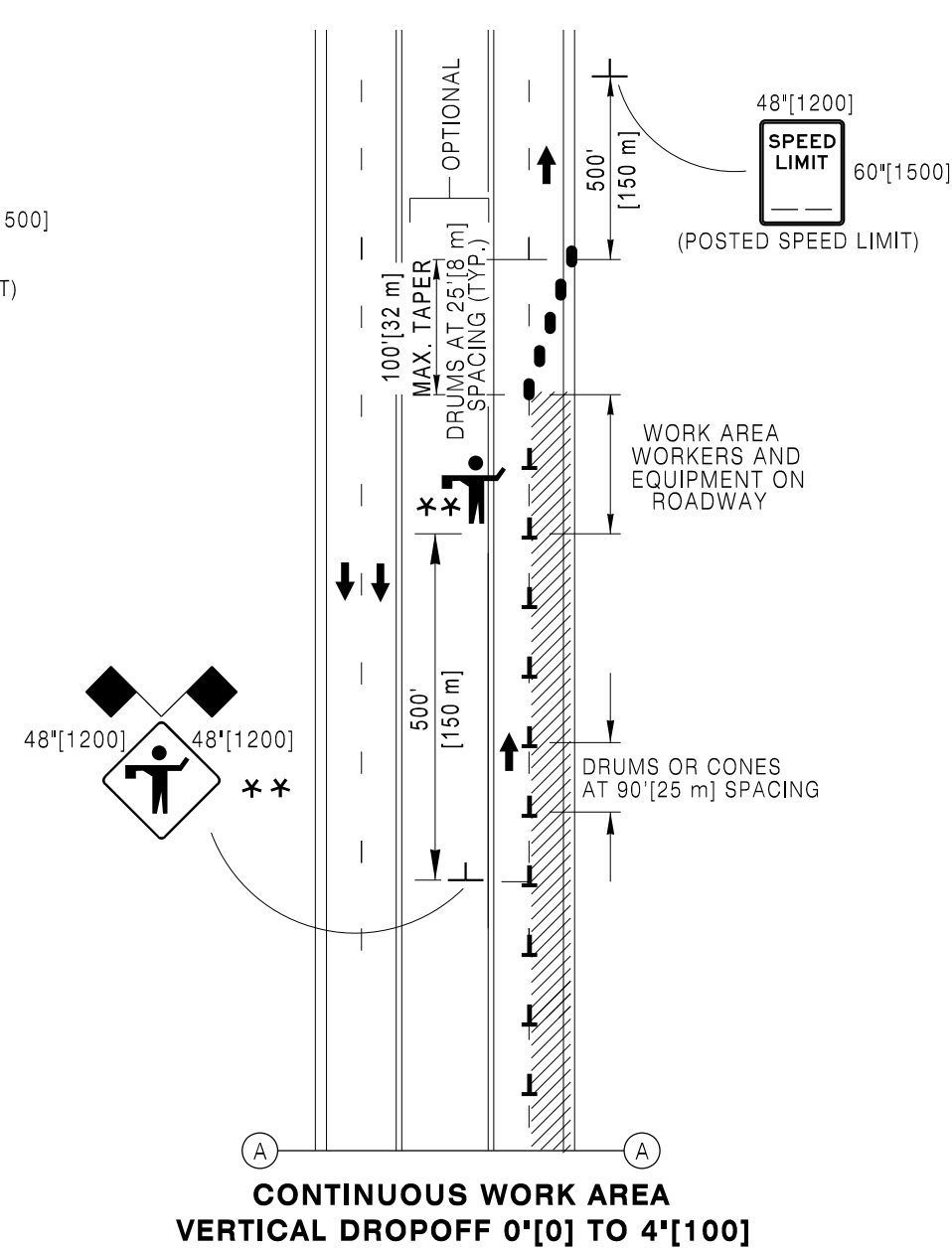
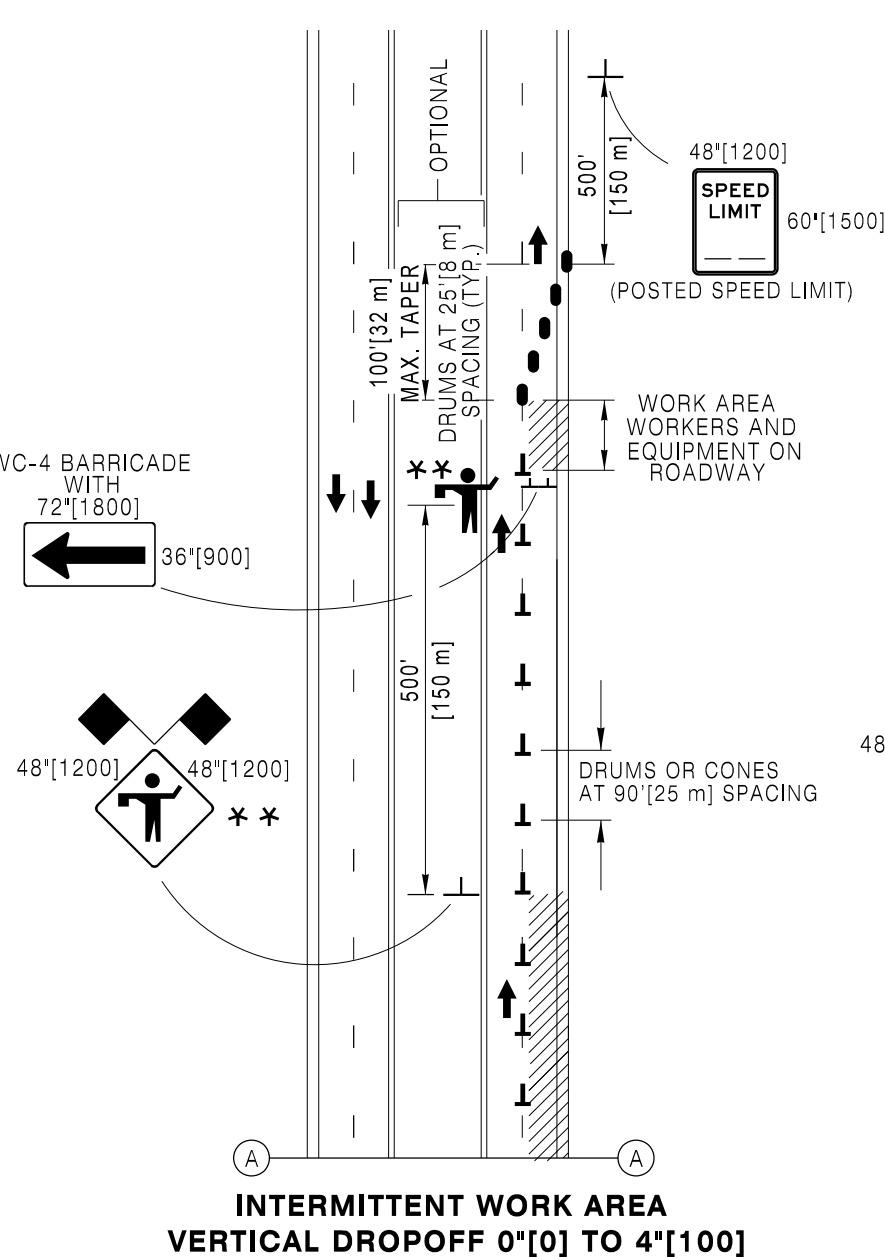
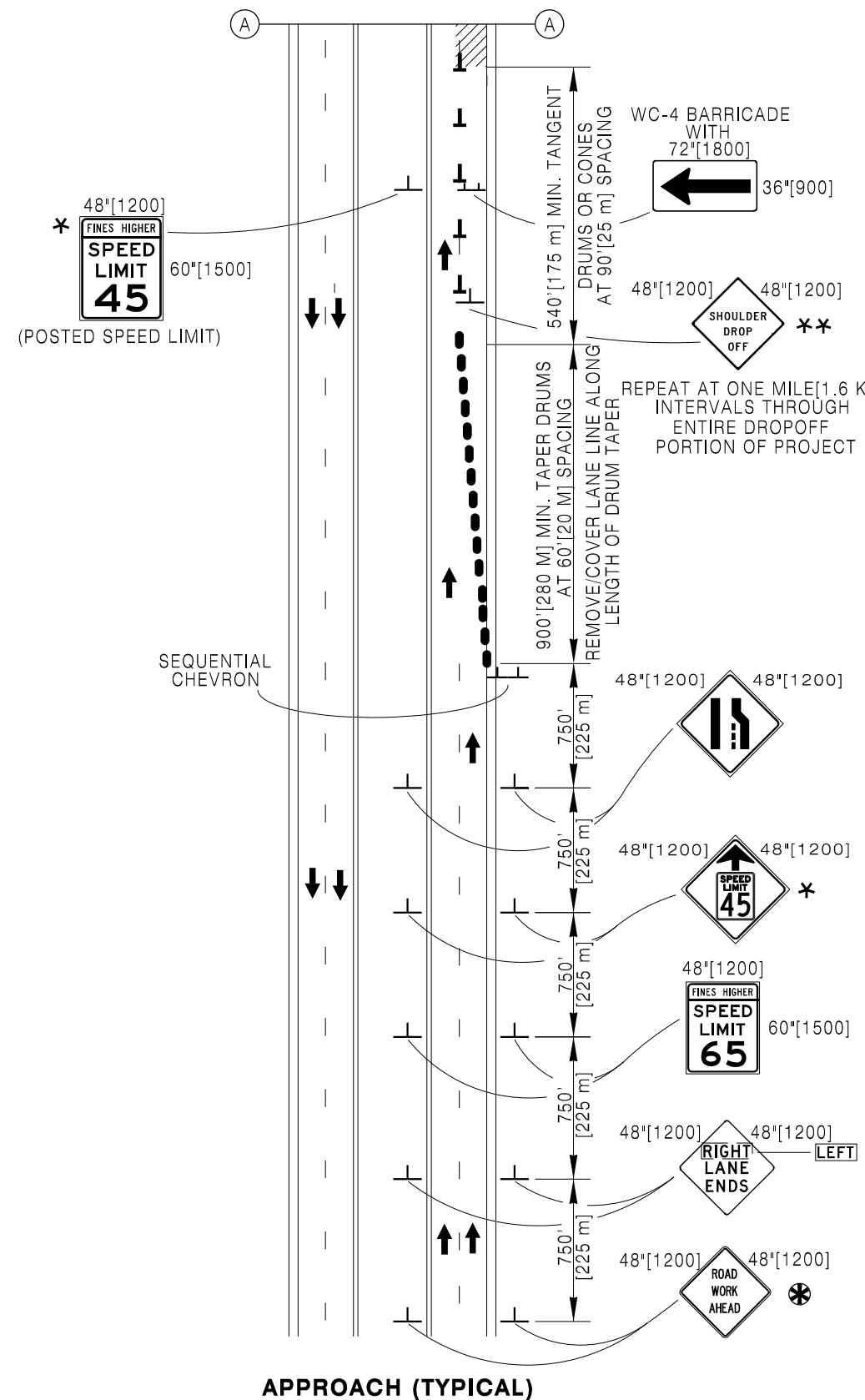


CONSTRUCTION TRAFFIC  
CONTROL FOUR LANE

STANDARD PLAN

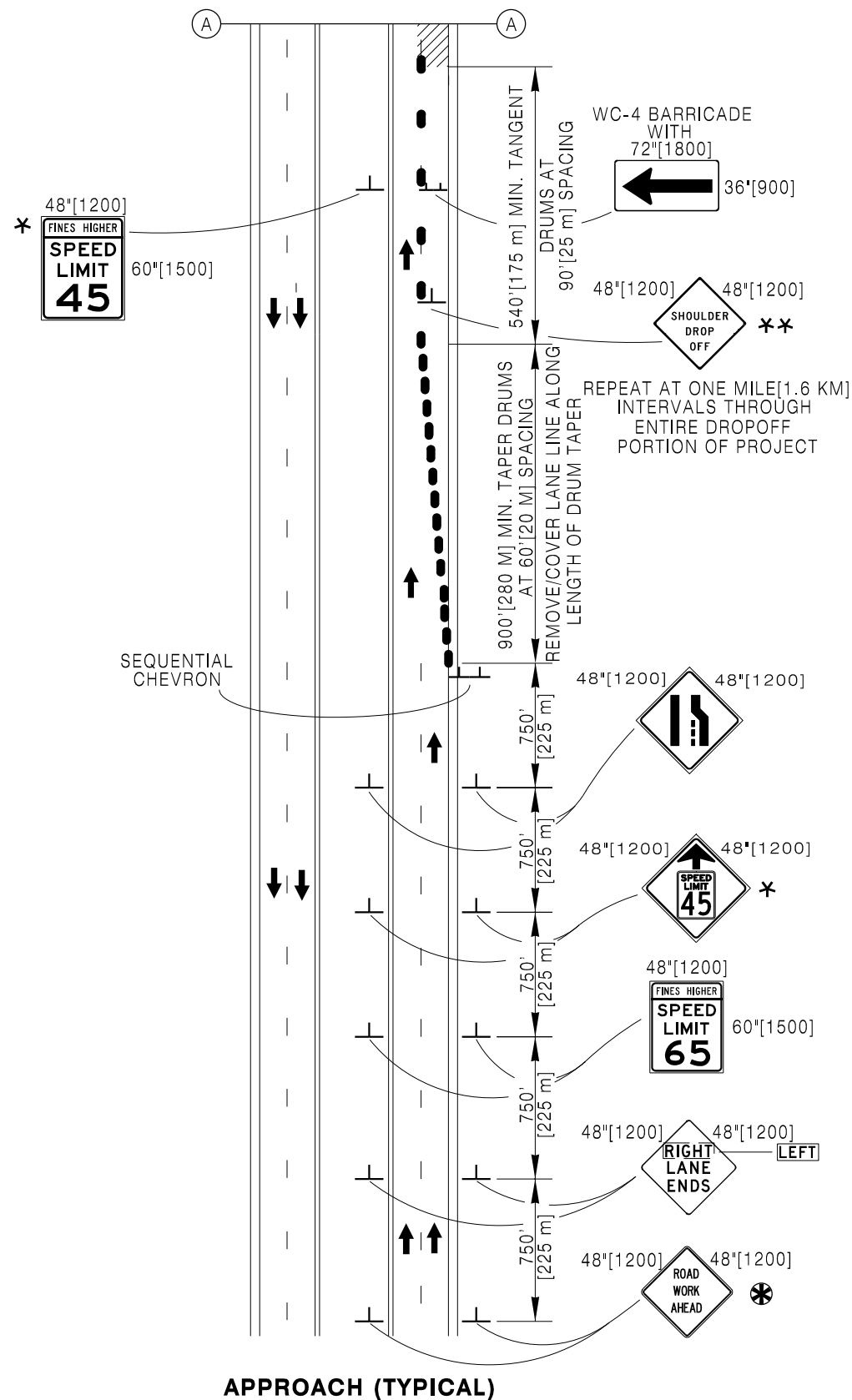
STANDARD PLAN NUMBER  
**703-3G**  
SHEET 6 of 10  
Issued by: TRAFFIC PROGRAM  
Date Issued: OCTOBER, 2016

Note: Units shown in brackets [ ] are metric and are in millimeters (mm) unless other units are shown.

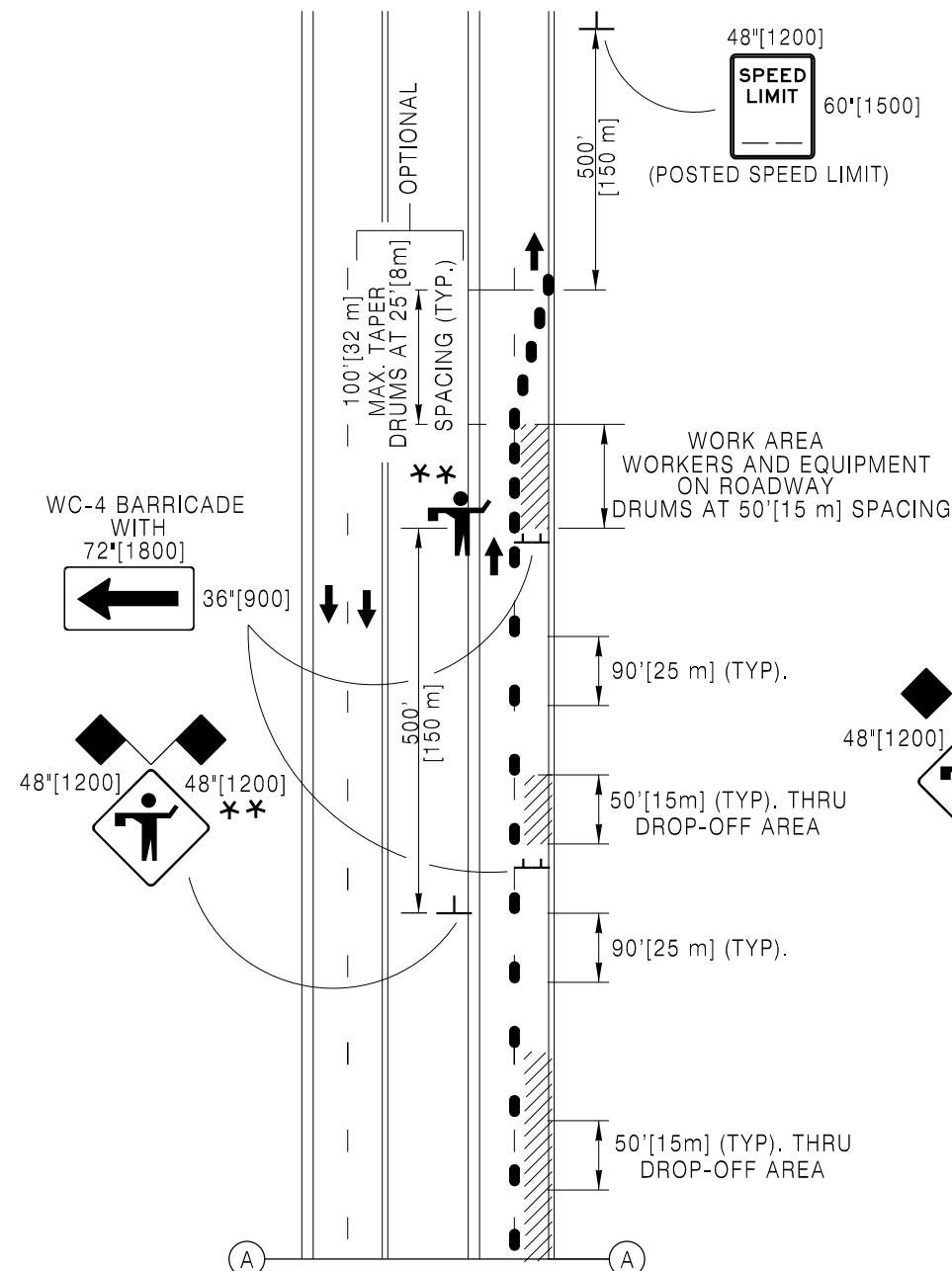


- \* USE 45 M.P.H. SPEED LIMIT FOR ACTIVE WORK ZONE. FOR MULTIPLE WORK ZONES, THE ENGINEER MAY RAISE THE SPEED LIMIT TO 65 M.P.H. BETWEEN THE ACTIVE WORK ZONES.
- \*\* OPTIONAL AS DIRECTED BY ENGINEER
- \* USE ONLY IF NO PREVIOUS "ROAD WORK AHEAD" SIGNS WITHIN ONE MILE [1.6 km], OR IF OUTSIDE OF THE REGULAR CONSTRUCTION AREA.

- LEGEND**
- DRUM
  - FLAGS
  - FLAGGER
  - CONSTRUCTION AREA
  - DRUM OR 42" [1050] CONE



**APPROACH (TYPICAL)**

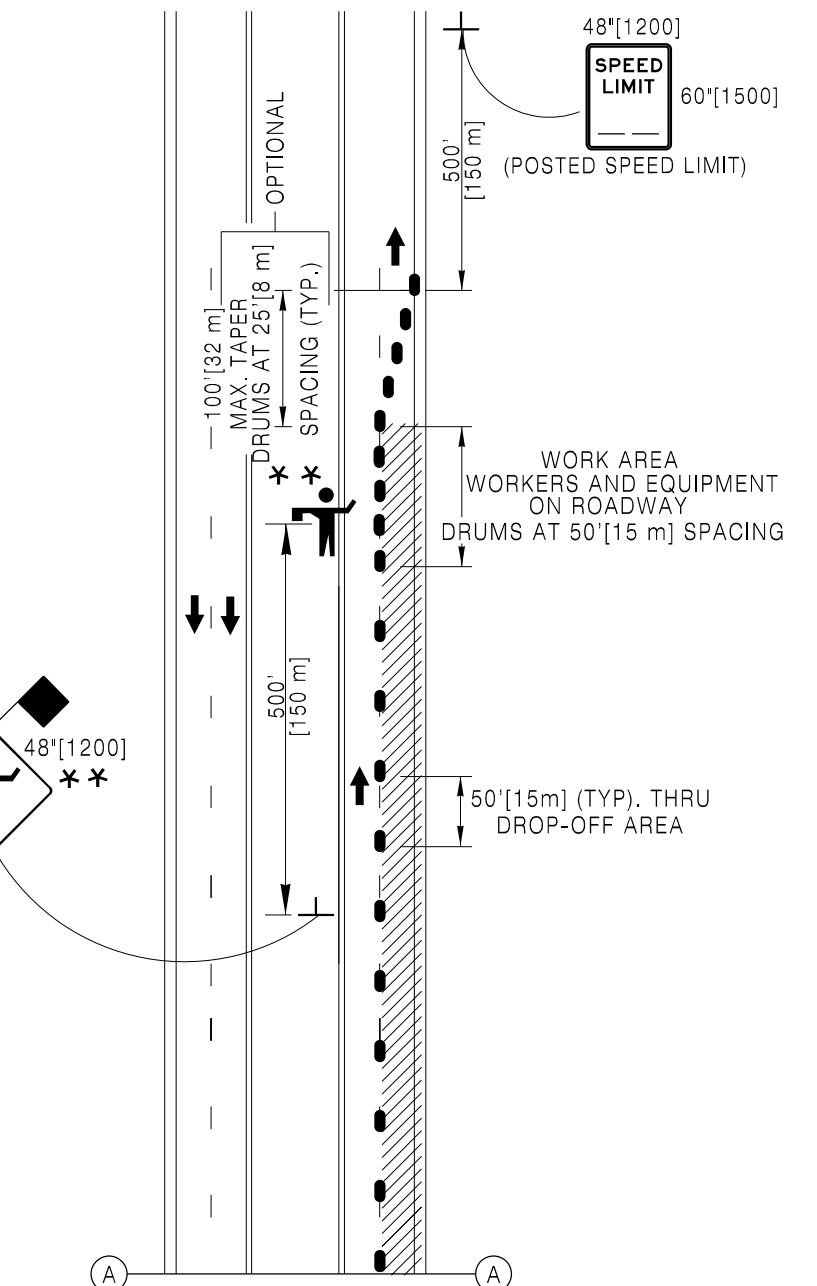


**INTERMITTENT VERTICAL DROP-OFF  
4"[100] TO 12"[300]**

CONTINUOUS DROPOFF:

PLACE WC-4 BARRICADE AT THE START OF THE CONTINUOUS DROPOFF AND EVERY 1000'[300 m] THROUGHOUT THE LENGTH OF CONTINUOUS DROPOFF.

- \* USE 45 M.P.H. SPEED LIMIT FOR ACTIVE WORK ZONE. FOR MULTIPLE WORK ZONES, THE ENGINEER MAY RAISE THE SPEED LIMIT TO 65 M.P.H. BETWEEN THE ACTIVE WORK ZONES.
- \*\* OPTIONAL AS DIRECTED BY THE ENGINEER.
- \* USE ONLY IF NO PREVIOUS "ROAD WORK AHEAD" SIGNS ARE WITHIN ONE MILE [1.6 km], OR IF OUTSIDE OF THE REGULAR CONSTRUCTION AREA.



**CONTINUOUS VERTICAL DROP-OFF  
4"[100] TO 12"[300]**

LEGEND

- FLAGGER
- WORK AREA
- DRUM
- FLAGS

Designed by: TRAFFIC  
Drawn by: JTG  
Checked by: TRAFFIC  
Previous Dwg. No. 703-3F

ONE LANE CLOSURE  
4"[100] TO 12"[300] VERTICAL DROPOFF

Note: Units shown in brackets [ ] are metric and are in millimeters (mm) unless other units are shown.



WYOMING DEPARTMENT  
OF  
TRANSPORTATION

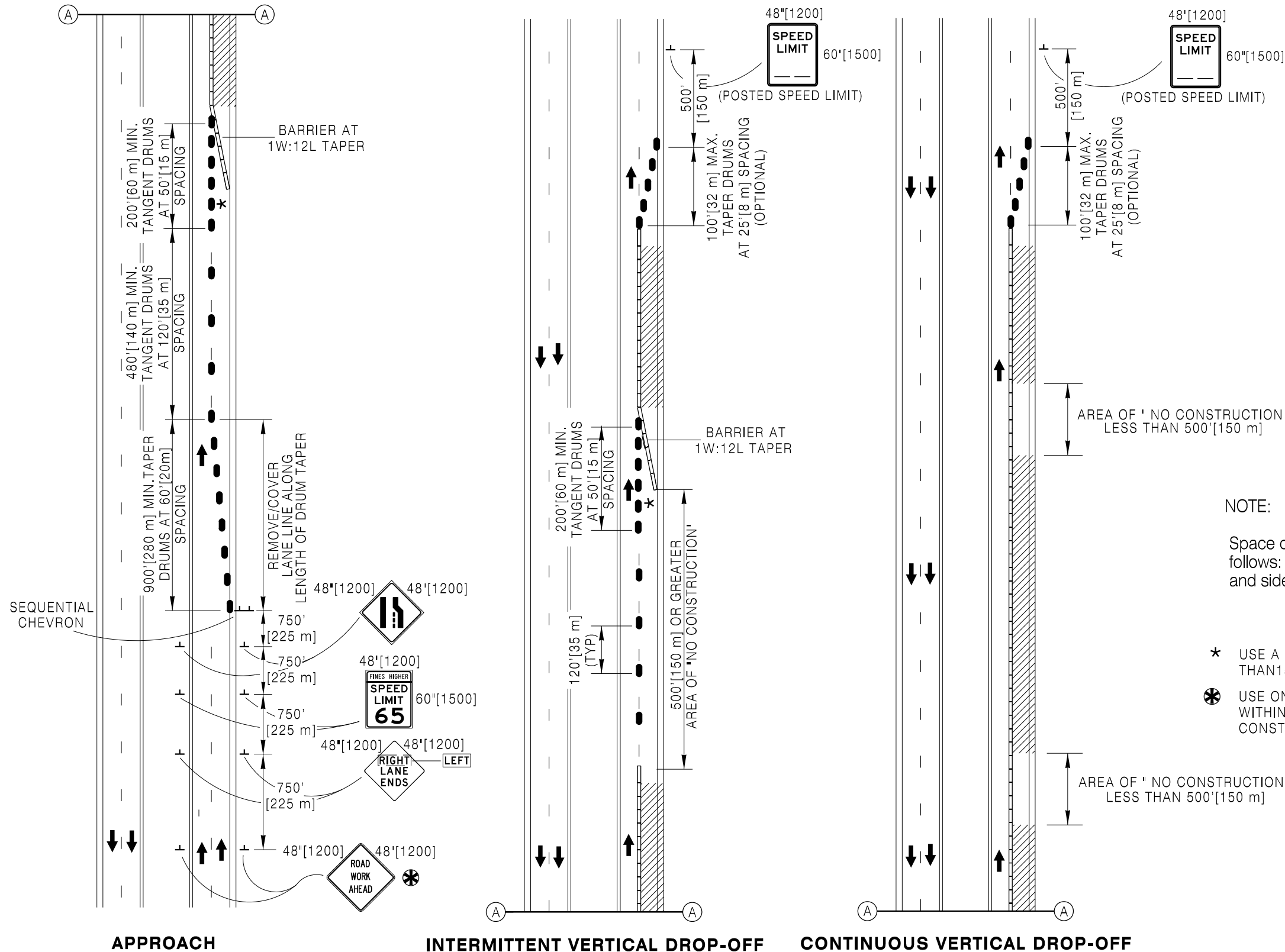


**CONSTRUCTION TRAFFIC  
CONTROL FOUR LANE**

STANDARD PLAN

STANDARD PLAN NUMBER  
**703-3G**  
SHEET 8 of 10  
Issued by: TRAFFIC PROGRAM  
Date Issued: OCTOBER, 2016





- LEGEND**
- WORK AREA
  - DRUM
  - TEMPORARY CONCRETE BARRIER

**NOTE:**

Space delineation on temporary concrete barrier as follows: 20' [6 m] through transitions or crossovers, top and sides. 50' [15 m] spacing on tangent, top and side.

- \* USE A CRASH ATTENUATOR IF END OF BARRIER IS LESS THAN 15' [5 m] FROM EDGE OF ACTIVE LANE LINE.
- \* USE ONLY IF NO PREVIOUS "ROAD WORK AHEAD" SIGNS ARE WITHIN ONE MILE [1.6 km], OR IF OUTSIDE OF THE REGULAR CONSTRUCTION AREA.

