



Wyoming Fuel Tax News

VOLUME 1, ISSUE 1

DECEMBER 2010

SPECIAL POINTS OF INTEREST:

- Look for the new Wyoming Fuel Tax News quarterly
- The Fuel Tax team embraces the community
- Electronic Filing (EDI)

INSIDE THIS ISSUE:

- FTA is strategic 2
- EDI filing 2
- Legislative Corner 3
- FTA Letter to Santa 3
- Paying At The Pump Graph 4
- Fuel Tax Team Contacts Info 4

We're on the web:
www.dot.state.wy.us

Introducing the Wyoming Fuel Tax News

Welcome to the Wyoming Fuel Tax News, a new, quarterly offering of information to both the customers who work with the Fuel Tax Administration office, as well as the public in general.

Our intention is to fill these pages with pertinent and useful information about fuel tax administration in the state of Wyoming. It is our belief that a quarterly newsletter will provide our readers with timely, useful information about fuel tax law, policies,

practices and answers to frequently asked questions.

The inaugural edition of the Wyoming Fuel Tax News has a dual purpose as we believe there will be some value in letting our readers know a

little about the Fuel Tax Administration Team as far as our strategic goals, our activities in the community and even our Christmas Wish List to Santa. Future editions will keep you apprised of our progress towards achieving our strategic goals and the outcomes of our continued focus on team but will also be more focused on specific fuel tax topics, issues, and questions.



The Wyoming Fuel Tax Team

The Fuel Tax Team Embraces the Community

Over the past few years, the Fuel Tax team has attempted to make a valuable contribution to the Laramie County community during the holiday season.

Last holiday season the team contributed their time and resources by adopting a local family through the Salvation Army's *Adopt a Family* program. Through the program, the team was able to help a family during the holidays by purchasing gifts

for both the children and the parents. It was a very rewarding experience, and the team enjoyed the camaraderie that came from both the gift shopping and gift wrapping.

"It really feels good to take our teamwork to the community level and make a valuable contribution to those less fortunate than us," stated Fuel Tax Administration Program Manager, Sharon Gostovich.

This year the team will again participate in the *Adopt a Family* program by adopting several families.

"The holidays are a time for giving, and it is great that our team has found a way to work together and give back to our community," stated FTA Program Supervisor, Wayne Hassinger.

Happy Holidays!



Fuel Tax Program Is Strategic

The Wyoming Fuel Tax Administration Program is becoming more strategic, and we have done a great deal of work over the past few years to build and enhance our 5-year strategic plan.

At the Wyoming Department of Transportation, each program is charged with creating a strategic plan using the Balanced Scorecard methodology. Last year, we spent several months participating in very intensive meetings in an effort to create a strategic plan that would be meaningful to us and that would resonate with our business partners and customers. We believe that the ongoing

team building work we participate in enhanced this process, and we now drive our business based on our strategic goals.

The Fuel Tax Administration Balanced Scorecard has 6 strategic goals that are listed below:

Resolve organizational design concerns; Provide World Class service; Educate business partners, as well as internal & external customers; Be the Gold Standard for all states & governments; Operate as a highly functioning team; and, Increase the Fuel Tax Program's ability to effectively administer fuel tax law.

While there is no question

that we have set lofty goals for our program, we are confident that we will achieve them if we stay focused, work diligently and continue to learn what our customers and business partners need and expect from us. We also appreciate that achieving our goals will take time, so while we hope that our customers and business partners will be patient with us, we also hope that you will hold us accountable for striving to achieve our stated goals.

The entire Fuel Tax Administration Balanced Scorecard can be viewed on the WYDOT website. Please do not hesitate to contact us with any questions you may have.

*In March of 2007,
Wyoming FTA
began accepting
electronic filing in
an EDI format.*



Electronic Filing

The Wyoming Fuel Tax Administration is ready and able to accept electronic filing of tax returns. In March of 2007, Wyoming FTA began accepting electronic filing in an EDI format. This format is

based on the specifications in the *Electronic Combined Reporting Methods Implementation Guide* published by the Motor Fuel Section of the Federation of Tax Administrators. The

specifics, including Wyoming's modifications--primarily which fields are required and which schedules are valid--are published at http://www.dot.state.wy.us/wydot/business_with_wydot/fuel_tax/electronic_filing. We can work with several of the most common Fuel Tax software programs. If that is not an option, we can provide a template for reporting your transactions

electronically. After filing three monthly electronic returns that are factually correct and match what you have reported in the traditional format, you will be able to file returns electronically and will only be required to mail the cover sheet and money due.

For more information on Electronic Filing, contact your Tax Examiner.

Proposed Fuel Tax Legislation

Bill Proposes Increased Fuel Tax Rate

The Joint Interim Committee on Transportation, Highways and Military Affairs voted 11-3 in favor of a bill to increase the state's tax on motor fuel by ten cents over the next three years. After listening to Department of

Transportation officials emphasize the need for an additional \$135 million each year to fix the state's deteriorating roads, the committee voted to sponsor the bill. The first three-cent increase would be

levied on July 1, 2011, another three cents on July 1, 2012, and the final four cents on July 1, 2013.

The ten-cent increase would generate \$73 million.

Agricultural Gasoline Exemption News

The Agricultural Gasoline Exemption Certificate program will once again be a topic of discussion in the Wyoming Legislature.

While at this point it is somewhat unclear what the specific proposed legislation will look like, there is some discussion centered on moving the exemption process to a

refund process where the agricultural producer would purchase tax-paid fuel and then come back to the state for a refund on the gallons used for agricultural purposes.

Currently, the agricultural producer goes through an exemption application process, and once the application is approved, they pay 30% of the fuel tax on the bulk gasoline

deliveries they receive.

A bill very similar to this went before the legislature during the 2009 session, and while it passed in the House, it died in a Senate committee.

The 2011 legislative session is right around the corner, so we will continue to track proposed legislation that may impact our customers.

The 2011 legislative session is right around the corner.

Fuel Tax Team Santa Wishes

Just for fun, the Fuel Tax Team shares their Santa wishes.

Cheryl: Harley Davidson Wide Glide—psychedelic purple—
Kim: 2011 Shelby Mustang—shiny black
Becky: FTA Team to win the Powerball
Jaron: Coastal Brown Bear Hunt

Barbara: Cruise Around the World

Wayne: Australian Golf Trip

Kerri: Trip to Hawaii

Jan: Red 2011 Subaru Outback w/leather upholstery

Heather: 2011 VW Bug—lime green w/purple polka dots

Bruce: Bike Ride In Tuscany

Beth: 3-month European vacation

Margie: More time with family

Rebecca: Family Trip to Disneyland

Leslie: 4,000 Square Foot House that is paid for

Sharon: Peace

you ask for and that you and your families have a Happy Holiday Season!

We hope that Santa brings you everything





State of Wyoming
 Department of Transportation
 Fuel Tax Administration

5300 Bishop Boulevard
 Cheyenne, Wyoming 82009

Phone: 307-777-4826

Fax: 307-777-4769

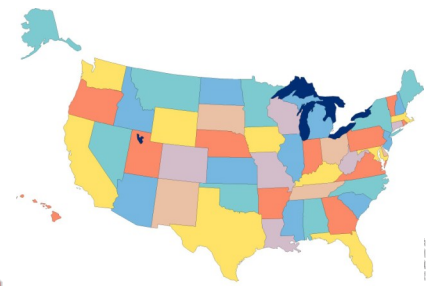
Website: www.dot.state.wy.us

DatabankUSA

Paying at the Pump

Gasoline tax per gallon as of April 2010

Ala. 20.9¢	Ky. 22.5	Nev. 33.1		
Alaska 8.0	La. 20.0	N.H. 19.6		
Ariz. 19.0	Mass. 23.5	N.J. 14.5		
Ark. 21.8	Md. 23.5	N.M. 18.8		
Calif. 48.6	Maine 31.0	N.Y. 44.9		
Colo. 22.0	Mich. 35.8	N.C. 30.2	Okla. 17.0	S.D. 24.0
Conn. 42.6	Minn. 27.2	N.D. 23.0	Ore. 25.0	Tenn. 21.4
D.C. 23.5	Mo. 17.3	Ohio 28.0	Pa. 32.3	Texas 20.0
Del. 23.0	Mont. 27.8		R.I. 33.0	Utah 24.5
Fla. 34.4	Neb. 27.7		S.C. 16.8	Vt. 24.7
Ga. 20.9				Wa. 19.6
Hawaii 45.1				Wash. 37.5
Idaho 25.0				W.Va. 32.2
Ill. 40.4				Wis. 32.9
Ind. 34.8				Wyo. 14.0
Iowa 22.0				
Kan. 25.0				



Fuel Tax Administration Mission

We are committed to providing world class service by accurately collecting taxes, distributing revenues, and administering the laws associated with fuel tax.

Fuel Tax Team Contact Information

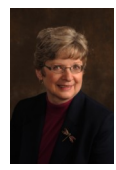
Management Team



Sharon Gostovich
 Program Manager
 307-777-4774



Wayne Hassinger
 Program Supervisor
 307-777-3909



Margie Hayes
 Sr. Tax Examiner
 307-777-4832



Kimberly Peters
 Sr. Tax Examiner
 307-777-3926

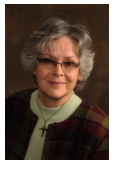
Team Members



Becky Savastano
 Tax Examiner
 307-777-3947



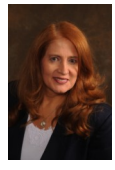
Beth Hilleman
 Tax Examiner
 307-777-4836



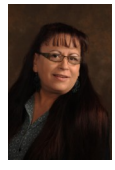
Jan Hertel
 Tax Examiner
 307-777-4856



Bruce Messer
 Tax Examiner
 307-777-4840



Cheryl Porter
 Tax Examiner
 307-777-4441



Barbara Cruz
 Data Entry Specialist
 307-777-4831



Jaron Curyea
 Tax Examiner
 307-777-4833



Rebecca Grommon
 Tax Examiner
 307-777-3984



Heather Romero
 Data Entry Specialist
 307-777-4831



Kerri Couch
 Agricultural Specialist
 307-777-4845



Leslie Andrade
 Administration
 307-777-4828