

# ***WYOMING***

## ***REPORT ON TRAFFIC CRASHES***



***2018***



Mark Gordon  
Governor

# Department of Transportation

## State of Wyoming



K Luke Reiner  
Director

March 21, 2019

Dear Reader,

Wyoming's 2018 Report on Traffic Crashes has been published for your information. This year's report continues to provide you with information on traffic crashes in the State of Wyoming. The publication contains general information. Additional reports are available and can be printed to add to your 2018 Traffic Crash Report from the website below:

[http://www.dot.state.wy.us/home/dot\\_safety/safety\\_statistics.html](http://www.dot.state.wy.us/home/dot_safety/safety_statistics.html)

If you require further information, or you have questions, comments or suggestions about the annual report, please contact our office at the address below. If you can't find the information you are looking for please contact Michael Janicek at (307) 777-3910 or Tracy Romero at (307) 777- 4274 for additional crash information.

Wyoming Department of Transportation  
Highway Safety Program  
Michael Janicek  
5300 Bishop Blvd  
Cheyenne, Wyoming 82009-3340  
(307) 777-3910

Sincerely,

A handwritten signature in blue ink, appearing to read "Matt Carlson".

Matthew D. Carlson, P.E.  
State Highway Safety Engineer

Data Provided By:  
Crash Data Management Section

This page intentionally left blank.

# TABLE OF CONTENTS

<b>DEFINITIONS</b>	1
<b>QUICK LOOK</b>	2
Crash Counts	2
Holiday Crash Statistics 2014-2018	3
Fatal Crash Count by County - Map	4
<b>GENERAL CRASH INFORMATION</b>	
Crash Counts by County & Month	5
Crashes by First Harmful Event 2014-2018	6
<b>PEOPLE INVOLVED INFORMATION</b>	
Drivers Involved in Fatal, Injury and PDO Crashes by Gender & Age	7
Occupant Seat Belt Usage Type by County	8-9
Pedestrian Crashes Summary	10
Pedacyclist (Bicyclist) Crashes Summary	11
<b>THE ENVIRONMENT</b>	
Road Surface Type & Road Condition by Crash Severity	12
Weather Conditions & Lighting Conditions by Crash Severity	13
<b>VEHICLES</b>	
Vehicle Types by Crash Severity	14
Vehicle with Contributing Circumstances by Crash Severity	15
<b>WYOMING COMMUNITIES</b>	
City / Town Crashes by Crash Severity	16-17
Manner of Collision by Intersection Type Crashes	18
<b>ALCOHOL INVOLVED CRASHES</b>	
Alcohol Involved Traffic Crashes 2015-2018	19
Alcohol Involved Crashes by Driver Age Group and Crash Severity 2014-2018	20-21
Alcohol Involved Crashes by Driver Age Group BAC Results, Crash Severity	22-23-24
<u>Fatal Crashes</u>	
Alcohol Involved Fatal Crashes by County and by City	25
Alcohol Involved Fatal Crashes by Vehicle Type, Estimated Speed, Age & Gender	26
<u>Injury Crashes</u>	
Alcohol Involved Injury Crashes by County by City	27
Alcohol Involved Injury Crashes by Vehicle Type, Estimated Speed, Age & Gender	28
<u>PDO Crashes</u>	
Alcohol Involved PDO Crashes by County by City	29

**DRIVERS AGE 14 -20**

Young Driver Crashes with Fatal, Injury and PDO by Gender and Age 30

**TRUCKS, SCHOOL BUSES & MOTORCYCLES**

**Trucks**

Medium& Heavy Trucks by Crash Severity and Roadway Type 2014 to 2018 31

**School Buses**

School Bus Crash Severity by County, Collision Type and by Crash Severity 32

Number of School Bus Crashes and Injured Charts 2014 to 2018 33

**Motorcycles**

Number of Motorcycle Crashes and Injured Charts 2014 to 2018 34

Motorcycle Crash Severity by County, Collision Type and by Crash Severity 35

# DEFINITIONS

## REPORTABLE TRAFFIC CRASH

A Reportable Traffic Crash is one which results in bodily injury or death of any person or a total property damage of \$1000 or more.

## CRASH SEVERITY

- Fatal Crash** A traffic crash involving one or more persons who were killed.
- Injury Crash** A traffic crash involving one or more persons who were injured but there were no fatalities.
- Property Damage Only (PDO)** A traffic crash involving property damage of \$1000 or more with no injuries or fatalities.

## INJURY STATUS

- Fatal Injury** Any injury that results in death within 30 days after the motor vehicle crash in which the injury occurred.
- Suspected Serious Injury** Any injury other than fatal which results in one or more of the following: Severe lacerations resulting in exposure of underlying tissues/muscles/organs or resulting in significant loss of blood; broken or distorted extremity (arm or leg); crush injuries; suspected skull, chest, or abdominal injury other than bruises or minor lacerations; significant burns (second and third degree burns over 10% or more of the body); unconsciousness when taken from the scene, or paralysis.
- Suspected Minor Injury** Any injury that is evident at the scene of the crash, other than fatal or serious injuries, including lump on the head, abrasions, bruises, minor lacerations (cuts on the skin with minimal bleeding and no exposure of deeper tissue/muscles).
- Possible Injury** Any injury reported or claimed which is not fatal, suspected serious, or suspected minor injury. Possible injuries are those that are reported by the person or are indicated by his/her behavior, but no wounds or injuries are readily present, and includes: Momentary loss of consciousness or claim of injury, limping, or complaint of pain or nausea.

This page intentionally left blank.



# QUICK LOOK

## 2018 Crash Counts

TOTAL CRASHES	13792
FATAL CRASHES	100
INJURY CRASHES	2432
PDO CRASHES	11260

## 2018 Involved Counts

NUMBER OF VEHICLES	20959
NUMBER OF DRIVERS	19582
NUMBER OF PERSONS	27962
NUMBER OF PEDESTRIANS	67
NUMBER OF PEDACYCLISTS	48

## 2018 Injury By Fatal Counts

INJURY CRASHES	2432
NUMBER INJURED	3262
FATAL CRASHES	100
NUMBER KILLED	111
PEDESTRIAN CRASHES	60
PEDESTRIANS INJURED	61
PEDESTRIANS KILLED	6
BICYCLIST CRASHES	48
BICYCLISTS INJURED	48
BICYCLISTS KILLED	0

## 2018 Location Counts

URBAN CRASHES	7043
RURAL CRASHES	6749

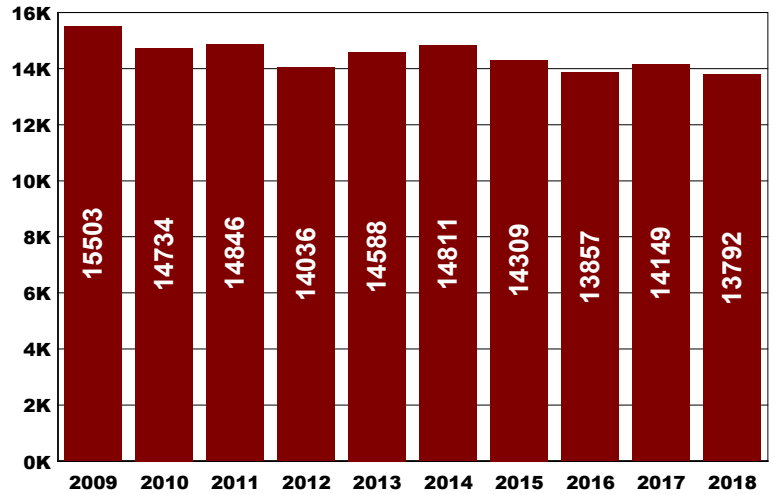
## 2018 Alcohol Statistics

ALCOHOL RELATED CRASHES	697
ALCOHOL FATAL CRASHES	33
ALCOHOL FATALITIES	36
ALCOHOL INJURY CRASHES	268
ALCOHOL INJURIES	343
ALCOHOL PDO CRASHES	396

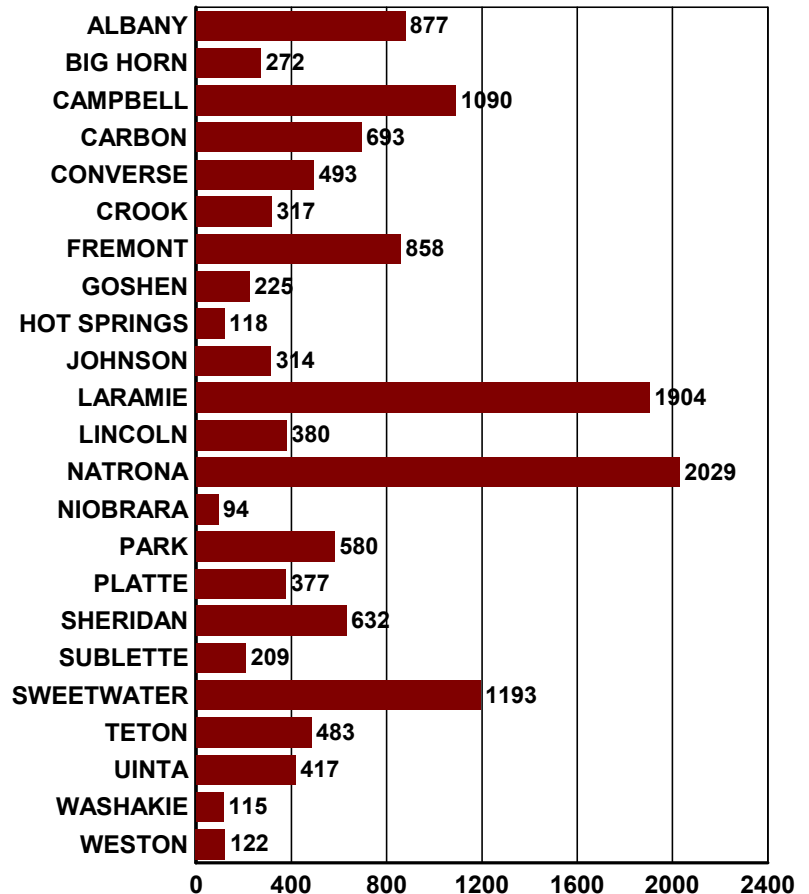
## 2018 Motorcycle Statistics

MOTORCYCLE CRASHES	222
MOTORCYCLE FATALITIES	15
MOTORCYCLE INJURIES	176

## TOTAL CRASHES BY YEAR



## 2018 CRASHES BY COUNTY





## HOLIDAY CRASH STATISTICS 2014 - 2018

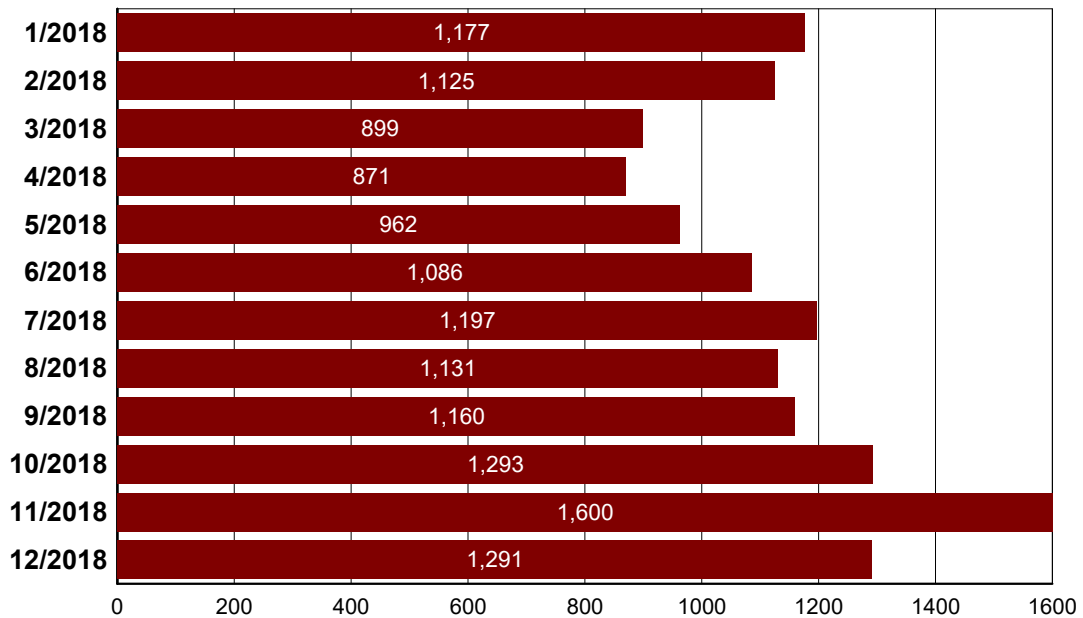
Holidays by Time Period		2018	2017	2016	2015	2014
<b>New Years</b>	Hours	84	84	84	108	36
	Crashes	118	121	86	237	100
	Fatal	1	0	1	4	0
	Injury	15	19	14	28	14
	PDO	102	102	71	205	86
	Fatalities	1	0	1	5	0
	Injuries	23	38	18	49	18
<b>Memorial Day</b>	Hours	84	84	84	84	84
	Crashes	101	92	84	109	103
	Fatal	3	2	1	0	0
	Injury	16	16	16	25	31
	PDO	82	74	67	84	72
	Fatalities	3	2	1	0	0
	Injuries	25	25	19	39	40
<b>Independence Day</b>	Hours	36	108	84	60	84
	Crashes	47	184	126	101	111
	Fatal	0	2	1	1	3
	Injury	15	35	26	20	32
	PDO	32	147	99	80	76
	Fatalities	0	2	1	1	3
	Injuries	20	50	37	28	42
<b>Labor Day</b>	Hours	84	84	84	84	84
	Crashes	118	98	105	124	115
	Fatal	2	1	0	3	1
	Injury	22	20	15	29	24
	PDO	94	77	90	92	90
	Fatalities	2	1	0	3	1
	Injuries	28	26	24	45	33
<b>Thanksgiving</b>	Hours	108	108	108	108	108
	Crashes	265	161	126	224	164
	Fatal	0	0	3	0	0
	Injury	31	30	17	32	27
	PDO	234	131	106	192	137
	Fatalities	0	0	5	0	0
	Injuries	40	39	31	40	40
<b>Christmas</b>	Hours	108	84	84	84	108
	Crashes	179	206	119	87	263
	Fatal	0	0	0	0	0
	Injury	26	29	18	9	36
	PDO	153	177	101	78	227
	Fatalities	0	0	0	0	0
	Injuries	30	42	27	11	48

# GENERAL CRASH INFORMATION

## 2018 Crash Counts by County

	Fatal Crashes	Fatalities	Injury Crashes	Injuries	PDO Crashes	Total
ALBANY	3	3	153	209	721	877
BIG HORN	2	2	56	69	214	272
CAMPBELL	4	4	212	282	874	1090
CARBON	11	14	130	175	552	693
CONVERSE	6	6	84	113	403	493
CROOK	5	6	53	68	259	317
FREMONT	10	10	133	199	715	858
GOSHEN	3	4	31	38	191	225
HOT SPRINGS	1	3	18	29	99	118
JOHNSON	1	1	34	53	279	314
LARAMIE	13	13	423	569	1468	1904
LINCOLN	6	8	65	87	309	380
NATRONA	5	5	358	449	1666	2029
NIOBRARA	5	7	19	41	70	94
PARK	5	5	93	138	482	580
PLATTE	5	5	72	85	300	377
SHERIDAN	3	3	97	127	532	632
SUBLETTE	2	2	20	26	187	209
SWEETWATER	7	7	188	245	998	1193
TETON	0	0	80	100	403	483
UINTA	2	2	75	114	340	417
WASHAKIE	0	0	23	29	92	115
WESTON	1	1	15	17	106	122
<b>Total</b>	<b>100</b>	<b>111</b>	<b>2432</b>	<b>3262</b>	<b>11260</b>	<b>13792</b>

## 2018 Crash Counts by Month



## CRASHES BY FIRST HARMFUL EVENT

2014 - 2018

<i>Harmful Event Category</i>	2014	2015	2016	2017	2018
Non-Collision Crashes	1943	1727	1767	1918	1612
Moving Vehicle Crashes	7932	7663	6805	6868	6888
Animal Crashes	2341	2702	3047	3061	3083
Fixed Object Crashes	2595	2217	2238	2302	2209
<b>Total</b>	<b>14811</b>	<b>14309</b>	<b>13857</b>	<b>14149</b>	<b>13792</b>



# PEOPLE INVOLVED INFORMATION

## TOTAL DRIVERS INVOLVED IN FATAL CRASHES IN 2018

### DRIVER'S AGE

DRIVER'S GENDER	14 - 16	17 - 20	21 - 24	25 - 29	30 - 39	40 - 49	50 - 59	60 - 69	70 +	Total
Female	0	5	3	5	10	2	6	1	2	34
Male	4	5	13	10	14	19	13	18	7	103
Total	4	10	16	15	24	21	19	19	9	137

## TOTAL DRIVERS INVOLVED IN INJURY CRASHES IN 2018

### DRIVER'S AGE

DRIVER'S GENDER	1 - 13	14 - 16	17 - 20	21 - 24	25 - 29	30 - 39	40 - 49	50 - 59	60 - 69	70 +	UK	Total
Female	3	61	198	136	148	266	218	181	139	97	0	1447
Male	2	82	229	230	232	440	330	348	275	143	1	2312
Unknown	0	0	0	0	0	0	0	0	0	0	33	33
Total	5	143	427	366	380	706	548	529	414	240	34	3792

Unknown gender & age are a result of hit and run crashes.

## TOTAL DRIVERS INVOLVED IN PDO CRASHES IN 2018

### DRIVER'S AGE

DRIVER'S GENDER	1 - 13	14 - 16	17 - 20	21 - 24	25 - 29	30 - 39	40 - 49	50 - 59	60 - 69	70 +	UK	Total
Female	3	221	692	555	649	1131	751	722	544	396	2	5666
Male	4	280	946	755	1008	1805	1373	1366	1115	676	3	9331
Unknown	0	0	0	0	0	0	0	0	0	0	656	656
Total	7	501	1638	1310	1657	2936	2124	2088	1659	1072	661	15653

Unknown gender & age are a result of hit and run crashes.

**OCCUPANT SEAT BELT USAGE TYPE BY COUNTY 2016 - 2018**

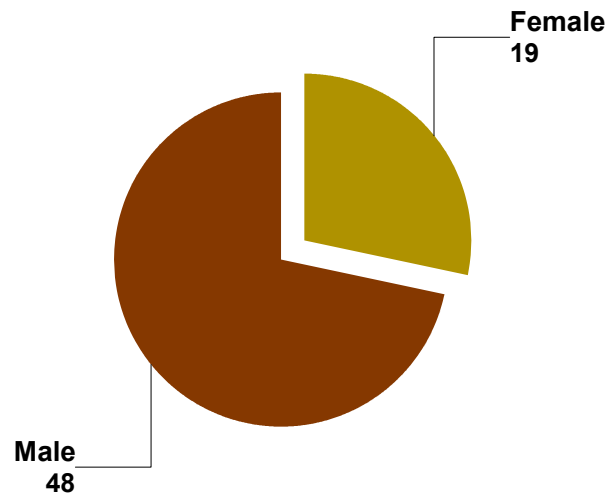
	2016				2017				2018															
	Proper Use	Misuse	Not Used	UNK	Proper Use	Misuse	Not Used	UNK	Proper Use	Misuse	Not Used	UNK												
	<b>ALBANY</b>																							
Driver's	1108	80%	3	0%	40	3%	140	10%	1251	87%	1	0%	43	3%	127	9%	1156	89%	2	0%	22	2%	110	8%
Passenger's	393	73%	8	1%	55	10%	79	15%	442	83%	14	3%	38	7%	39	7%	377	72%	12	2%	54	10%	81	15%
	<b>BIG HORN</b>																							
Driver's	103	36%	1	0%	22	8%	32	11%	205	76%	0	0%	28	10%	33	12%	276	81%	1	0%	20	6%	31	9%
Passenger's	121	85%	3	2%	10	7%	9	6%	115	76%	2	1%	18	12%	17	11%	109	97%	0	0%	2	2%	1	1%
	<b>CAMPBELL</b>																							
Driver's	1079	73%	1	0%	58	4%	141	10%	1256	86%	2	0%	67	5%	128	9%	1422	87%	0	0%	65	4%	125	8%
Passenger's	524	87%	27	4%	19	3%	31	5%	510	76%	16	2%	21	3%	120	18%	600	85%	25	4%	28	4%	51	7%
	<b>CARBON</b>																							
Driver's	629	71%	3	0%	25	3%	113	13%	788	81%	3	0%	38	4%	136	14%	691	79%	3	0%	41	5%	128	15%
Passenger's	266	65%	10	2%	64	16%	69	17%	276	74%	13	3%	47	13%	37	10%	234	73%	10	3%	41	13%	37	11%
	<b>CONVERSE</b>																							
Driver's	302	61%	0	0%	30	6%	49	10%	470	90%	0	0%	16	3%	36	7%	539	87%	0	0%	27	4%	46	7%
Passenger's	183	88%	3	1%	14	7%	7	3%	220	75%	12	4%	13	4%	49	17%	220	87%	4	2%	13	5%	17	7%
	<b>CROOK</b>																							
Driver's	133	40%	0	0%	23	7%	9	3%	265	83%	0	0%	21	7%	22	7%	303	83%	1	0%	12	3%	24	7%
Passenger's	161	93%	1	1%	8	5%	3	2%	136	89%	1	1%	10	7%	5	3%	141	84%	4	2%	6	4%	16	10%
	<b>FREMONT</b>																							
Driver's	542	51%	4	0%	47	4%	134	13%	946	81%	1	0%	51	4%	167	14%	894	80%	1	0%	48	4%	158	14%
Passenger's	412	82%	9	2%	30	6%	53	11%	463	78%	15	3%	72	12%	42	7%	371	79%	12	3%	35	7%	51	11%
	<b>GOSHEN</b>																							
Driver's	164	54%	0	0%	17	6%	36	12%	245	75%	0	0%	16	5%	64	20%	222	77%	1	0%	12	4%	50	17%
Passenger's	103	86%	1	1%	7	6%	9	8%	107	89%	1	1%	4	3%	8	7%	109	83%	1	1%	14	11%	8	6%
	<b>HOT SPRINGS</b>																							
Driver's	70	52%	2	1%	10	7%	13	10%	98	75%	0	0%	6	5%	25	19%	101	74%	0	0%	4	3%	32	23%
Passenger's	46	90%	0	0%	5	10%	0	0%	46	81%	0	0%	3	5%	8	14%	49	67%	1	1%	4	5%	19	26%
	<b>JOHNSON</b>																							
Driver's	116	37%	0	0%	18	6%	44	14%	296	81%	2	1%	21	6%	39	11%	290	82%	0	0%	17	5%	43	12%
Passenger's	131	89%	1	1%	3	2%	12	8%	196	92%	1	0%	8	4%	8	4%	169	91%	2	1%	6	3%	8	4%
	<b>LARAMIE</b>																							
Driver's	2819	86%	4	0%	125	4%	260	8%	2721	88%	6	0%	102	3%	228	7%	2818	89%	2	0%	74	2%	239	8%
Passenger's	1099	82%	38	3%	11	3%	92	7%	912	81%	46	4%	65	6%	99	9%	921	86%	47	4%	50	5%	50	5%
	<b>LINCOLN</b>																							
Driver's	229	55%	1	0%	19	5%	36	9%	386	79%	0	0%	31	6%	67	14%	391	82%	0	0%	28	6%	45	9%
Passenger's	214	80%	8	3%	25	9%	19	7%	184	71%	3	1%	17	7%	54	21%	190	70%	3	1%	14	5%	63	23%
	<b>NATRONA</b>																							
Driver's	2464	80%	4	0%	103	3%	348	11%	2631	84%	10	0%	118	4%	376	12%	2721	84%	5	0%	101	3%	369	11%
Passenger's	1015	86%	50	4%	50	4%	71	6%	1141	82%	51	4%	42	3%	157	11%	1062	87%	51	4%	61	5%	48	4%
	<b>NIOBRARA</b>																							
Driver's	38	37%	1	1%	8	8%	28	27%	59	69%	0	0%	4	5%	20	24%	78	70%	0	0%	3	3%	28	25%
Passenger's	33	66%	0	0%	4	8%	13	26%	41	77%	1	2%	3	6%	8	15%	41	71%	0	0%	3	5%	14	24%
	<b>PARK</b>																							
Driver's	405	54%	1	0%	37	5%	78	10%	607	76%	1	0%	46	6%	126	16%	595	77%	1	0%	32	4%	128	17%
Passenger's	239	87%	4	1%	17	6%	16	6%	295	88%	5	1%	14	4%	23	7%	254	79%	2	1%	20	6%	47	15%

	2016				2017				2018															
	Proper Use	Misuse	Not Used	UNK	Proper Use	Misuse	Not Used	UNK	Proper Use	Misuse	Not Used	UNK												
	<b>PLATTE</b>																							
Driver's	271	59%	1	0%	21	5%	41	9%	421	87%	0	0%	23	5%	35	7%	377	89%	0	0%	16	4%	25	6%
Passenger's	233	87%	6	2%	124	4%	16	6%	240	87%	9	3%	16	6%	12	4%	195	88%	7	3%	12	5%	8	4%
	<b>SHERIDAN</b>																							
Driver's	494	51%	0	0%	52	5%	211	22%	745	76%	0	0%	32	3%	196	20%	656	74%	2	0%	26	3%	183	21%
Passenger's	314	79%	9	2%	164	4%	56	14%	326	76%	11	3%	6	1%	86	20%	229	70%	3	1%	22	7%	75	23%
	<b>SUBLETTE</b>																							
Driver's	125	47%	0	0%	7	3%	21	8%	242	82%	1	0%	22	7%	24	8%	194	83%	0	0%	13	6%	23	10%
Passenger's	124	83%	0	0%	16	11%	10	7%	115	69%	4	2%	28	17%	19	11%	91	91%	3	3%	4	4%	2	2%
	<b>SWEETWATER</b>																							
Driver's	1357	77%	3	0%	80	5%	229	13%	1575	85%	0	0%	60	3%	214	12%	1403	84%	2	0%	38	2%	206	12%
Passenger's	610	78%	42	5%	95	12%	38	5%	641	79%	36	4%	107	13%	26	3%	547	77%	14	2%	66	9%	82	12%
	<b>TETON</b>																							
Driver's	521	65%	2	0%	20	2%	157	20%	727	82%	2	0%	18	2%	130	15%	643	87%	1	0%	11	1%	77	10%
Passenger's	218	74%	7	2%	9	3%	60	20%	277	70%	8	2%	48	12%	62	16%	233	54%	5	1%	53	12%	138	32%
	<b>UINTA</b>																							
Driver's	349	63%	1	0%	21	4%	74	13%	440	82%	1	0%	19	4%	73	14%	457	84%	1	0%	12	2%	68	13%
Passenger's	269	72%	4	1%	43	12%	56	15%	251	76%	7	2%	50	15%	23	7%	251	72%	8	2%	31	9%	57	16%
	<b>WASHAKIE</b>																							
Driver's	58	34%	1	1%	15	9%	47	28%	136	75%	0	0%	11	6%	31	17%	111	80%	0	0%	8	6%	17	12%
Passenger's	52	73%	2	3%	6	8%	11	15%	55	79%	2	3%	5	7%	8	11%	47	82%	1	2%	3	5%	6	11%
	<b>WESTON</b>																							
Driver's	55	40%	1	1%	11	8%	23	17%	94	72%	0	0%	7	5%	25	19%	111	76%	0	0%	2	1%	28	19%
Passenger's	39	83%	1	2%	4	9%	3	6%	57	89%	2	3%	1	2%	4	6%	59	91%	1	2%	2	3%	3	5%
	<b>TOTAL</b>																							
Driver's	16366	85%	34	0%	651	3%	2,230	12%	16604	85%	30	0%	668	3%	2295	12%	16449	85%	23	0%	632	3%	2,183	11%
Passenger's	6542	81%	233	3%	597	7%	724	9%	7046	80%	260	3%	620	7%	910	10%	6499	80%	215	3%	544	7%	882	27%
	<b>COMBINED TOTAL</b>																							
Driver's & Passenger's	22908	84%	267	1%	1248	5%	2954	11%	23650	83%	290	1%	1288	5%	3205	11%	22948	84%	238	1%	1176	4%	3065	11%

**PEDESTRIANS INVOLVED IN CRASHES IN 2018  
BY AGE AND INJURY STATUS**

	Fatal	Suspected Serious Injury	Suspected Minor Injury	Possible	Total
<b>0 - 13</b>	0	0	4	0	4
<b>14 - 16</b>	0	1	6	1	8
<b>17 - 20</b>	0	0	3	3	6
<b>21 - 24</b>	0	1	2	2	5
<b>25 - 29</b>	1	0	3	2	6
<b>30 - 39</b>	1	3	4	1	9
<b>40 - 49</b>	1	2	1	2	6
<b>50 - 59</b>	0	4	2	3	9
<b>60 - 69</b>	1	2	5	3	11
<b>70 +</b>	2	1	0	0	3
<b>Total</b>	6	14	30	17	67

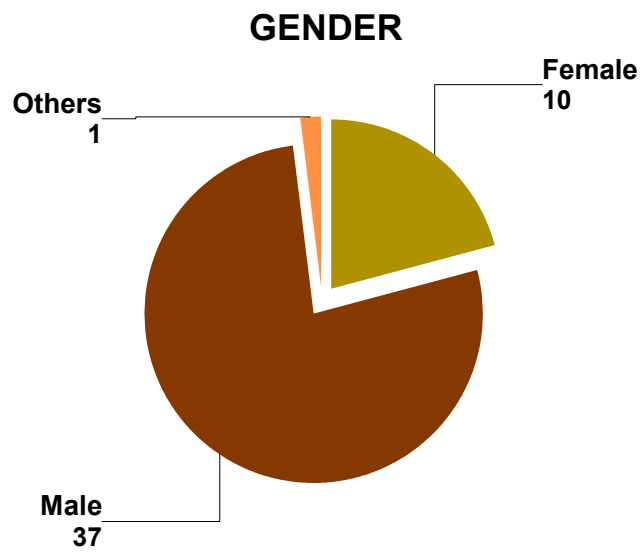
**GENDER**





**BICYCLISTS INVOLVED IN CRASHES IN 2018  
BY AGE AND INJURY STATUS**

	Suspected Serious Injury	Suspected Minor Injury	Possible	Total
0 - 13	1	7	7	15
14 - 16	0	3	0	3
17 - 20	0	3	1	4
21 - 24	0	2	0	2
25 - 29	0	0	2	2
30 - 39	1	5	0	6
40 - 49	0	4	1	5
50 - 59	1	3	1	5
60 - 69	1	1	1	3
70 +	1	0	1	2
Unknown	0	0	1	1
<b>Total</b>	<b>5</b>	<b>28</b>	<b>15</b>	<b>48</b>



# THE ENVIRONMENT

## 2018 CRASHES BY ROAD SURFACE TYPE AND SEVERITY

Road Surface	Fatal Crashes	Injury Crashes	PDO Crashes	Total
Asphalt	85	1941	6578	8604
Concrete	12	407	1559	1978
Dirt	1	47	155	203
Gravel/Rock	3	76	183	262
Unknown	0	1	2987	2988

NOTE: Unknown road surface crashes include animal crash information where this element is not reported. Each crash may have more than one road surface choices types listed.

## 2018 CRASHES BY ROAD CONDITIONS AND SEVERITY

Road Conditions	Fatal Crashes		Injury Crashes		PDO Crashes		Total	
	1st Condition	2nd Condition	1st Condition	2nd Condition	1st Condition	2nd Condition	1st Condition	2nd Condition
Dry	77	0	1764	3	7789	15	9630	18
Wet	8	1	164	26	695	85	867	112
Ice/Frost	12	3	319	84	1716	324	2047	411
Snow	2	3	135	147	784	771	921	921
Mud/Dirt/Gravel	0	1	23	14	47	19	70	34
Slush	0	0	19	23	68	100	87	123
Oil/Fuel	0	0	0	0	3	0	3	0
Sand on Dry Pavement	0	0	3	0	6	2	9	2
Sand on Icy Road	0	1	1	4	5	9	6	14
Water Standing/Running	0	1	1	8	9	18	10	27
Other	0	1	0	0	7	3	7	4
Unknown	1	0	3	3	131	1	135	4
<b>Total</b>	<b>100</b>	<b>11</b>	<b>2432</b>	<b>312</b>	<b>11260</b>	<b>1347</b>	<b>13792</b>	<b>1670</b>

NOTE: Each crash may have up to two road condition choices types listed.

## 2018 CRASHES BY WEATHER CONDITIONS AND SEVERITY

Weather Conditions	Fatal Crashes		Injury Crashes		PDO Crashes		Total	
	1st Condition	2nd Condition	1st Condition	2nd Condition	1st Condition	2nd Condition	1st Condition	2nd Condition
Clear	75	0	1903	6	8703	25	10681	31
Raining	3	0	82	6	307	18	392	24
Snowing	6	1	211	7	1187	26	1404	34
Fog	3	0	13	3	52	15	68	18
Blowing Dust/Sand/Dirt	0	0	0	0	3	5	3	5
Severe Wind Only	0	1	40	3	121	20	161	24
Blizzard	0	0	10	8	27	33	37	41
Sleet/Hail/Freezing Rain	0	3	10	16	37	30	47	49
Blowing Snow	4	2	43	23	188	158	235	183
Cloudy, Overcast	8	2	110	24	453	56	571	82
Smoke	0	0	1	0	12	2	13	2
Other	0	0	2	1	9	0	11	1
Unknown	1	0	7	0	161	3	169	3
<b>Total</b>	<b>100</b>	<b>9</b>	<b>2432</b>	<b>97</b>	<b>11260</b>	<b>391</b>	<b>13792</b>	<b>497</b>

NOTE: Each crash may have up to two weather conditions and severity.

## 2018 CRASHES BY LIGHTING CONDITIONS AND SEVERITY

Lighting Conditions	Fatal Crashes	Injury Crashes	PDO Crashes	Total
Darkness Lighted	2	184	858	1044
Darkness Unlighted	36	462	2978	3476
Dawn	4	50	379	433
Daylight	53	1678	6517	8248
Dusk	5	54	361	420
Other	0	2	7	9
Unknown	0	2	160	162
<b>Total</b>	<b>100</b>	<b>2432</b>	<b>11260</b>	<b>13792</b>

# VEHICLES

## 2018 VEHICLE TYPES BY CRASH SEVERITY

Vehicle Type	Number of Vehicles involved in:			Total
	Fatal Crashes	Injury Crashes	PDO Crashes	
Passenger	27	1285	4644	5,956
Passenger Van	4	126	379	509
PU	46	1001	3933	4,980
School Bus	0	10	33	43
Other Bus	0	0	8	8
Transit Bus	0	2	14	16
Charter Bus	0	2	3	5
MC > 150cc	15	139	39	193
Off Road MC	0	3	0	3
Other Vehicle	0	2	36	38
SUV	22	897	3106	4,025
Cargo Van	0	17	69	86
Motor Home	1	4	40	45
Light Truck (< 10K)	0	7	40	47
Medium Truck (>10K - <26K)	3	19	134	156
Heavy Truck (>26K)	20	318	1110	1,448
Farm Equipment	0	4	5	9
Construction Vehicle	1	2	18	21
MC <150 cc	0	26	6	32
Moped	0	2	1	3
Snowmobile	0	1	0	1
ATV	0	12	4	16
MPV	1	12	9	22
Unknown	0	7	3290	3,297
<b>Total</b>	<b>140</b>	<b>3898</b>	<b>16921</b>	<b>20959</b>

**2018 CRASHES INVOLVING A VEHICLE WITH  
CONTRIBUTING CIRCUMSTANCES BY SEVERITY**

Number of Vehicles involved in:

Contributing Circumstance	Fatal Crashes	Injury Crashes	PDO Crashes	Total
Brakes	0	29	96	125
Cruise Control	0	4	6	10
Defroster	0	1	5	6
Exhaust System	0	1	0	1
Lights (Head, Signal, or Tail)	0	8	9	17
Mirrors	0	0	3	3
None	0	0	0	0
Other	3	37	167	207
Oversized Load	0	1	8	9
Power Train	0	4	18	22
Rain/Snow/Ice on Windshield	2	10	29	41
Stalled Vehicle	0	4	12	16
Steering	1	10	39	50
Suspension	0	5	9	14
Tinted Windows	0	0	1	1
Tire	0	45	102	147
Trailer Brakes	1	1	16	18
Truck Coupling/Trailer Hitch/Safety Chain	0	6	22	28
Unknown	0	0	0	0
Vehicle Cargo Blocking View	0	0	2	2
Wheels	1	6	33	40
Windows/Windshield	0	1	6	7
Wipers	0	0	1	1
	0	0	0	0
<b>Total</b>	<b>8</b>	<b>173</b>	<b>584</b>	<b>765</b>

# WYOMING COMMUNITIES

2018

## CITY AND TOWN CRASHES BY SEVERITY

### WITH INJURY AND FATALITY COUNTS

City - Town	Fatal Crashes	Injury Crashes	PDO Crashes	Total	Persons Injured	Persons Killed
AFTON	0	4	22	26	7	0
ALBIN	0	0	1	1	0	0
ALPINE	0	2	5	7	2	0
BAGGS	1	0	0	1	0	1
BAR NUNN	0	0	3	3	0	0
BASIN	0	0	10	10	0	0
BEAR RIVER	0	1	3	4	4	0
BUFFALO	0	3	33	36	7	0
BURNS	0	0	1	1	0	0
BYRON	0	1	3	4	1	0
CASPER	3	284	1288	1575	356	3
CHEYENNE	5	325	1168	1498	426	5
CHUGWATER	0	0	6	6	0	0
CODY	0	20	148	168	31	0
COKEVILLE	0	0	1	1	0	0
COWLEY	0	1	2	3	1	0
DAYTON	0	0	2	2	0	0
DEAVER	0	0	1	1	0	0
DIAMONDVILLE	0	0	1	1	0	0
DIXON	0	0	1	1	0	0
DOUGLAS	1	20	107	128	25	1
DUBOIS	0	2	13	15	2	0
EAST THERMOPOLIS	0	0	2	2	0	0
ETHETE	0	0	1	1	0	0
ETNA	0	0	1	1	0	0
EVANSTON	0	23	75	98	35	0
EVANSVILLE	0	7	44	51	10	0
FT LARAMIE	0	0	1	1	0	0
GILLETTE	0	146	542	688	195	0
GLENDO	1	0	1	2	0	1
GLENROCK	0	3	15	18	3	0
GRANGER	0	0	1	1	0	0
GREEN RIVER	0	23	154	177	31	0
GREYBULL	0	2	13	15	2	0
GUERNSEY	0	0	2	2	0	0
HANNA	0	0	3	3	0	0
HILLSDALE	0	0	1	1	0	0
HUDSON	0	0	1	1	0	0
HULETT	0	0	2	2	0	0
JACKSON	0	32	172	204	34	0
KEMMERER	0	2	21	23	2	0
LABARGE	0	0	1	1	0	0
LANDER	0	15	88	103	16	0
LARAMIE	0	84	406	490	109	0
LINGLE	0	2	3	5	2	0
LOVELL	0	2	12	14	3	0
LUSK	0	1	15	16	2	0
LYMAN	0	0	5	5	0	0
MANDERSON	0	1	1	2	1	0
MARBLETON	0	0	1	1	0	0
MEDICINE BOW	0	1	2	3	1	0
MEETEETSE	0	0	1	1	0	0
MIDWEST	0	1	0	1	1	0
MILLS	0	10	46	56	12	0

City - Town	Fatal Crashes	Injury Crashes	PDO Crashes	Total	Persons Injured	Persons Killed
MOORCROFT	0	1	16	17	1	0
MOUNTAIN VIEW	0	0	3	3	0	0
NEWCASTLE	0	6	17	23	6	0
PAVILLION	0	0	3	3	0	0
PINE BLUFFS	0	2	10	12	2	0
PINE HAVEN	0	1	2	3	2	0
PINEDALE	0	0	23	23	0	0
POWELL	1	11	45	57	16	1
RAWLINS	1	27	147	175	30	1
RIVERTON	1	37	159	197	45	1
ROCK SPRINGS	2	69	372	443	88	2
SARATOGA	0	2	13	15	2	0
SHERIDAN	0	50	304	354	62	0
SINCLAIR	0	2	10	12	3	0
STAR VALLEY RANCH	0	0	4	4	0	0
SUNDANCE	0	2	24	26	2	0
TEN SLEEP	0	0	2	2	0	0
THAYNE	0	0	2	2	0	0
THERMOPOLIS	0	4	25	29	9	0
TORRINGTON	0	8	46	54	9	0
UPTON	0	1	3	4	3	0
WAMSUTTER	0	1	7	8	2	0
WHEATLAND	0	11	39	50	13	0
WORLAND	0	6	30	36	8	0
WRIGHT	0	1	9	10	1	0
<b>Total</b>	<b>16</b>	<b>1260</b>	<b>5767</b>	<b>7043</b>	<b>1625</b>	<b>16</b>



**2018 CITY AND TOWN CRASHES BY  
INTERSECTION MANNER AND TYPE OF COLLISION**

**Intersection Type**

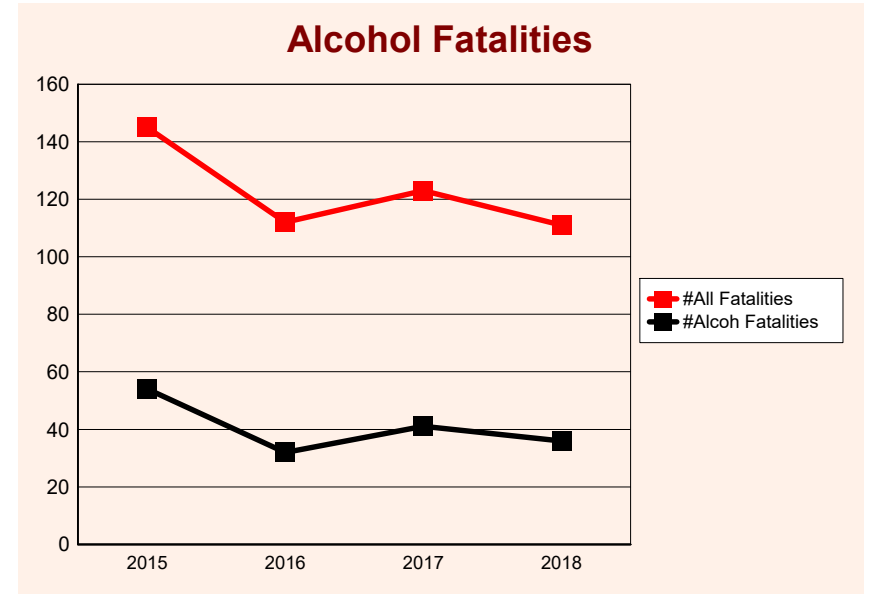
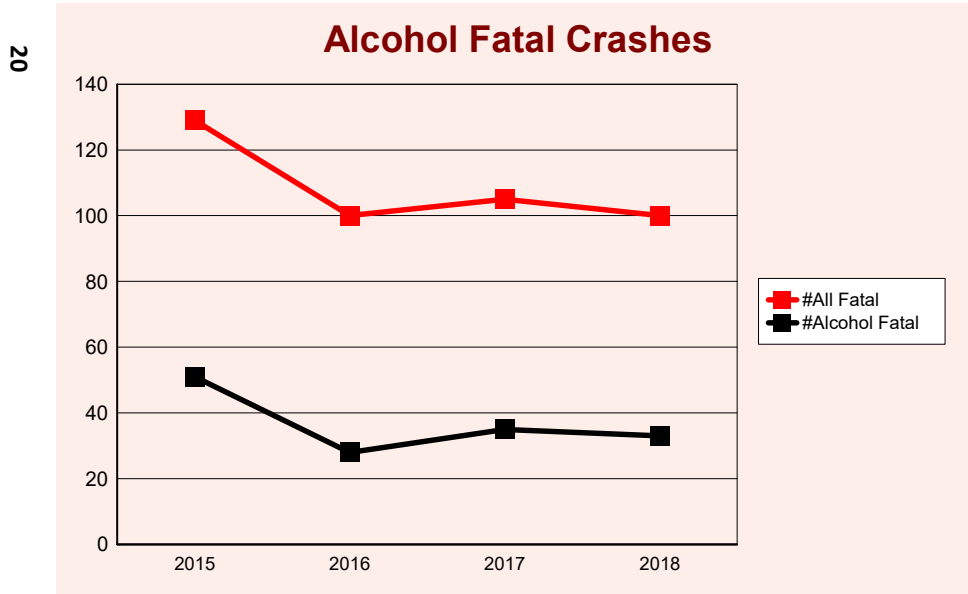
<b>Manner of Collision</b>	<b>Five (5) Point or more</b>	<b>Four (4)-Way Intersection</b>	<b>Intersection as part of an Interchange</b>	<b>L Intersection</b>	<b>Not an Intersection</b>	<b>Roundabout</b>	<b>T Intersection</b>	<b>Y Intersection</b>	<b>Total</b>
Angle (Front to Side), Opposing Direction	3	276	12	1	160	4	108	3	567
Angle Direction not Specified	0	2	0	0	3	0	0	0	5
Angle Right (Front to Side, includes Broadside)	4	850	31	4	197	12	146	2	1246
Angle Same Direction (Front to Side)	1	158	21	1	326	25	52	1	585
Head On (Front to Front)	1	62	0	0	90	0	30	2	185
Not a Collision w/2 Vehicles in Transport	1	164	29	7	958	7	138	9	1313
Other	0	1	0	0	24	0	1	0	26
Rear End (Front to Rear)	9	673	79	2	647	4	232	8	1654
Rear to Front (Normally Backing)	1	43	2	0	114	1	18	0	179
Rear to Rear (Normally Backing)	0	2	0	0	44	0	1	0	47
Rear to Side (Normally Backing)	0	8	0	0	229	0	7	0	244
Sideswipe Opposite Direction (Meeting)	1	14	0	0	46	0	7	1	69
Sideswipe Same Direction (Passing)	1	83	21	1	334	4	24	0	468
Unknown	0	2	0	0	109	0	4	0	115
<b>Total</b>	<b>22</b>	<b>2338</b>	<b>195</b>	<b>16</b>	<b>3281</b>	<b>57</b>	<b>768</b>	<b>26</b>	<b>6703</b>

# ALCOHOL INVOLVED CRASHES

## ALCOHOL INVOLVED TRAFFIC CRASHES 2015-2018

Year	Fatal Crashes				Injury Crashes				PDO Crashes		
	All Crashes	Alcohol Crashes	Total Fatalities	Alcohol Fatalities	All Crashes	Alcohol Crashes	* Total Injuries	* Alcohol Injuries	All Crashes	Alcohol Crashes	
2015	129	51 <b>40%</b>	145	54 <b>37%</b>	2792	319 <b>11%</b>	3819	439 <b>11%</b>	11388	422 <b>4%</b>	
2016	100	28 <b>28%</b>	112	32 <b>29%</b>	2461	302 <b>12%</b>	3319	385 <b>12%</b>	11296	382 <b>3%</b>	
2017	105	35 <b>33%</b>	123	41 <b>33%</b>	2497	245 <b>10%</b>	3443	343 <b>10%</b>	11547	392 <b>3%</b>	
2018	100	33 <b>33%</b>	111	36 <b>32%</b>	2432	268 <b>11%</b>	3262	343 <b>11%</b>	11260	396 <b>4%</b>	

\* Injuries include injuries resulting from fatal crashes.



**ALCOHOL INVOLVED CRASHES BY DRIVER AGE GROUP  
AND SEVERITY 2014 - 2018**

**2014**

Drivers Involved in

Age Group	Fatal Crashes	Injury Crashes	PDO Crashes	Total
14 - 16	1	4	1	6
17 - 20	2	30	31	63
21 - 24	6	47	84	137
25 - 29	6	48	71	125
30 - 39	11	69	114	194
40 - 49	7	52	63	122
50 - 59	6	38	59	103
60 - 69	2	16	22	40
70 - 79	1	4	3	8
80 +	0	1	1	2
Unknown	0	0	3	3
<b>Total</b>	<b>42</b>	<b>309</b>	<b>452</b>	<b>803</b>

**2015**

Drivers Involved in

Age Group	Fatal Crashes	Injury Crashes	PDO Crashes	Total
14 - 16	0	2	6	8
17 - 20	0	13	30	43
21 - 24	7	45	60	112
25 - 29	10	47	70	127
30 - 39	10	64	94	168
40 - 49	3	62	43	108
50 - 59	4	37	49	90
60 - 69	2	19	15	36
70 - 79	0	3	4	7
80 +	0	0	2	2
Unknown	0	3	3	6
<b>Total</b>	<b>36</b>	<b>295</b>	<b>376</b>	<b>707</b>

**2016**

Drivers Involved in

Age Group	Fatal Crashes	Injury Crashes	PDO Crashes	Total
14 - 16	0	0	2	2
17 - 20	2	19	22	43
21 - 24	3	37	71	111
25 - 29	5	48	67	120
30 - 39	3	85	90	178
40 - 49	4	53	64	121
50 - 59	5	36	51	92
60 - 69	2	16	13	31
70 - 79	0	2	1	3
80 +	0	1	1	2
Unknown	1	1	13	15
<b>Total</b>	<b>25</b>	<b>298</b>	<b>395</b>	<b>718</b>

**Continued**

**2017**

**Drivers Involved in**

<b>Age Groups</b>	<b>Fatal Crashes</b>	<b>Injury Crashes</b>	<b>PDO Crashes</b>	<b>Total Drivers</b>
14 - 16	0	2	3	5
17 - 20	1	31	31	63
21 - 24	5	41	61	107
25 - 29	3	34	72	109
30 - 39	5	65	88	158
40 - 49	9	42	59	110
50 - 59	8	22	44	74
60 - 69	1	16	29	46
70 - 79	0	3	3	6
Unknown	0	0	9	9
<b>Total</b>	<b>32</b>	<b>256</b>	<b>399</b>	<b>687</b>

**2018**

**Drivers Involved in**

<b>Age Groups</b>	<b>Fatal Crashes</b>	<b>Injury Crashes</b>	<b>PDO Crashes</b>	<b>Total Drivers</b>
14 - 16	2	11	13	26
17 - 20	0	12	21	33
21 - 24	5	56	53	114
25 - 29	5	47	63	115
30 - 39	6	55	110	171
40 - 49	7	46	58	111
50 - 59	4	24	35	63
60 - 69	3	20	21	44
70 - 79	1	0	7	8
Unknown	0	1	17	18
<b>Total</b>	<b>33</b>	<b>272</b>	<b>398</b>	<b>703</b>

**2018 ALCOHOL INVOLVED CRASH SEVERITY  
BY AGE GROUP AND BAC RESULTS OF DRIVER**

Age Groups BAC Results	Drivers in Fatal Crashes	Drivers in Injury Crashes	Drivers in PDO Crashes
<b>0 - 13</b>			
Others	0	0	0
<b>Total</b>	<b>0</b>	<b>0</b>	<b>0</b>
<b>14 - 16</b>			
.01 - .07	0	1	0
.08 - .09	0	0	1
.10 - .15	0	1	0
.16 - .20	0	0	1
Others	1	6	4
<b>Total</b>	<b>1</b>	<b>8</b>	<b>6</b>
<b>17 - 20</b>			
.08 - .09	0	1	5
.10 - .15	0	5	9
.16 - .20	0	2	6
.21 - .25	0	1	1
.26 - .30	0	0	1
.41 - .45	0	0	1
Others	1	17	19
<b>Total</b>	<b>1</b>	<b>26</b>	<b>42</b>
<b>21 - 24</b>			
.01 - .07	0	7	1
.08 - .09	0	0	2
.10 - .15	1	14	9
.16 - .20	2	4	12
.21 - .25	1	1	2
.26 - .30	0	1	1
.31 - .35	0	1	0
.36 - .40	0	1	0
Others	2	30	37
<b>Total</b>	<b>6</b>	<b>59</b>	<b>64</b>
<b>25 - 29</b>			
.01 - .07	2	3	1
.08 - .09	0	1	3
.10 - .15	1	7	11
.16 - .20	2	5	9
.21 - .25	0	2	1
.26 - .30	0	1	6
.31 - .35	0	1	0
.36 - .40	0	0	1
Others	1	30	39
<b>Total</b>	<b>6</b>	<b>50</b>	<b>71</b>

Age Groups BAC Results	Drivers in Fatal Crashes	Drivers in Injury Crashes	Drivers in PDO Crashes
<b>30 - 39</b>			
.01 - .07	0	6	2
.08 - .09	0	3	5
.10 - .15	1	8	12
.16 - .20	1	6	16
.21 - .25	0	5	10
.26 - .30	0	6	4
.36 - .40	0	1	2
.56 +	0	1	2
Others	6	35	79
<b>Total</b>	<b>8</b>	<b>71</b>	<b>132</b>
<b>40 - 49</b>			
.01 - .07	1	7	4
.08 - .09	1	0	3
.10 - .15	0	3	9
.16 - .20	1	2	4
.21 - .25	1	6	8
.26 - .30	1	1	1
Others	4	49	46
<b>Total</b>	<b>9</b>	<b>68</b>	<b>75</b>
<b>50 - 59</b>			
.01 - .07	1	3	2
.08 - .09	0	1	0
.10 - .15	0	3	8
.16 - .20	1	2	6
.21 - .25	0	2	4
.26 - .30	0	1	0
.56 +	0	1	0
Others	2	21	32
<b>Total</b>	<b>4</b>	<b>34</b>	<b>52</b>
<b>60 - 69</b>			
.01 - .07	0	1	2
.08 - .09	0	2	0
.10 - .15	0	4	2
.16 - .20	2	5	4
.21 - .25	1	2	2
.26 - .30	0	0	1
.56 +	0	0	1
Others	2	16	20
<b>Total</b>	<b>5</b>	<b>30</b>	<b>32</b>
<b>70 - 79</b>			
.10 - .15	0	0	4
.16 - .20	0	0	1
.56 +	0	0	1
Others	1	4	4
<b>Total</b>	<b>1</b>	<b>4</b>	<b>10</b>

	<b>Age Groups BAC Results</b>	<b>Drivers in Fatal Crashes</b>	<b>Drivers in Injury Crashes</b>	<b>Drivers in PDO Crashes</b>
<b>80 +</b>				
	Others	0	1	0
<b>Total</b>		<b>0</b>	<b>1</b>	<b>0</b>
<b>UK</b>				
	.10 - .15	0	0	1
	Others	0	3	16
<b>Total</b>		<b>0</b>	<b>3</b>	<b>17</b>
<b>Others</b>				
	Others	0	0	0
<b>Total</b>		<b>0</b>	<b>0</b>	<b>0</b>
		<b>41</b>	<b>354</b>	<b>501</b>



# ALCOHOL INVOLVED FATAL CRASHES

## 2018 ALCOHOL INVOLVED FATAL CRASHES BY COUNTY

County	Fatal Crashes	People Injured	People Killed
Big Horn	1	0	1
Carbon	3	0	4
Converse	1	0	1
Crook	1	0	1
Fremont	9	4	9
Laramie	2	0	2
Lincoln	3	0	5
Natrona	4	0	4
Park	1	0	1
Platte	2	0	2
Sheridan	1	0	1
Sublette	1	1	1
Sweetwater	2	0	2
Uinta	1	0	1
Weston	1	0	1
<b>Total</b>	<b>33</b>	<b>5</b>	<b>36</b>

## 2018 ALCOHOL INVOLVED FATAL CRASHES BY CITY

City	Fatal Crashes	People Injured	People Killed
CASPER	3	0	3
CHEYENNE	1	0	1
DOUGLAS	1	0	1
RIVERTON	1	0	1
ROCK SPRINGS	1	0	1
<b>Total</b>	<b>7</b>	<b>0</b>	<b>7</b>

**2018 ALCOHOL INVOLVED FATAL  
CRASHES BY VEHICLE TYPE**

Vehicle Type	Number of Vehicles
Heavy Truck > 26,000	4
MC > 150 cc	6
PU	15
Passenger	10
SUV	7
<b>Total</b>	<b>42</b>

**2018 ALCOHOL INVOLVED FATAL CRASHES  
ESTIMATED SPEED**

Estimated Speed	Number of Vehicles
0 - 13	2
31 - 50	2
51 - 64	8
65 +	21
Others	9
<b>Total</b>	<b>42</b>

**2018 ALCOHOL INVOLVED FATAL CRASHES WITH  
AGE AND GENDER OF DRIVERS**

Age Groups	Male	Female	Total Drivers
14 - 16	1	0	1
17 - 20	0	1	1
21 - 24	5	1	6
25 - 29	3	3	6
30 - 39	4	4	8
40 - 49	9	0	9
50 - 59	3	1	4
60 - 69	5	0	5
70 - 79	1	0	1
<b>Total</b>	<b>31</b>	<b>10</b>	<b>41</b>

# ALCOHOL INVOLVED INJURY CRASHES

## 2018 ALCOHOL INVOLVED INJURY CRASHES BY CITY

City	Injury Crashes	Number Injured
ALPINE	1	1
BUFFALO	1	2
BYRON	1	1
CASPER	38	49
CHEYENNE	35	45
CODY	2	2
DOUGLAS	5	5
EVANSTON	2	2
EVANSVILLE	2	3
GILLETTE	7	7
GLENROCK	2	2
JACKSON	5	5
LARAMIE	8	8
MILLS	2	3
RAWLINS	3	3
RIVERTON	6	6
ROCK SPRINGS	7	8
SARATOGA	1	1
SHERIDAN	6	9
SINCLAIR	1	1
TORRINGTON	1	1
WHEATLAND	1	1
WORLAND	1	1
<b>Total</b>	<b>138</b>	<b>166</b>

## 2018 ALCOHOL INVOLVED INJURY CRASHES BY COUNTY

County	Injury Crashes	Number Injured
Albany	17	27
Big Horn	7	8
Campbell	16	17
Carbon	14	16
Converse	17	19
Crook	1	1
Fremont	19	30
Goshen	3	3
Hot Springs	1	1
Johnson	3	4
Laramie	46	64
Lincoln	11	12
Natrona	48	62
Niobrara	1	4
Park	11	11
Platte	5	5
Sheridan	16	20
Sublette	4	4
Sweetwater	13	15
Teton	8	9
Uinta	6	6
Washakie	4	4
Weston	1	1
<b>Total</b>	<b>272</b>	<b>343</b>

## 2018 ALCOHOL INVOLVED INJURY CRASHES

### BY VEHICLE TYPE

Vehicle Type	Number of Vehicles	
ATV	1	0%
Cargo Van	1	0%
Heavy Truck > 26,000	16	4%
Light Truck	1	0%
MC < 150 cc	3	1%
MC > 150 cc	8	2%
MPV	3	1%
Medium Truck	2	1%
PU	141	37%
Passenger	126	33%
Passenger Van	12	3%
SUV	70	18%
Unknown	1	0%
<b>Total</b>	<b>385</b>	

## 2018 ALCOHOL INVOLVED INJURY CRASHES

### BY ESTIMATED SPEED

Estimated Speed (MPH)	Number of Vehicles
0 - 20	103
20 - 30	39
30 - 50	74
50 - 65	55
65 +	57
Others	57
<b>Total</b>	<b>385</b>

## 2018 ALCOHOL INVOLVED INJURY CRASHES

### BY AGE GROUP AND GENDER OF DRIVER

Age Groups	Male	Female	Unknown	Total
14 - 16	2	3	0	5
17 - 20	13	5	0	18
21 - 24	44	12	0	56
25 - 29	35	12	0	47
30 - 39	46	9	0	55
40 - 49	34	12	0	46
50 - 59	20	4	0	24
60 - 69	18	2	0	20
Unknown	0	0	1	1
<b>Total</b>	<b>212</b>	<b>59</b>	<b>1</b>	<b>272</b>

# ALCOHOL INVOLVED PDO CRASHES

## 2018 BY COUNTY

County	PDO Crashes
Albany	25
Big Horn	7
Campbell	33
Carbon	21
Converse	9
Crook	6
Fremont	42
Goshen	7
Hot Springs	2
Johnson	8
Laramie	50
Lincoln	11
Natrona	67
Park	17
Platte	5
Sheridan	22
Sublette	4
Sweetwater	39
Teton	11
Uinta	6
Washakie	3
Weston	1
<b>Total</b>	<b>396</b>

## 2018 BY CITY

City	PDO Crashes
ALBIN	1
ALPINE	1
BUFFALO	2
CASPER	54
CHEYENNE	39
CODY	13
DAYTON	1
DOUGLAS	5
DUBOIS	2
EAST THERMOPOLIS	1
EVANSTON	2
EVANSVILLE	2
GILLETTE	27
GREEN RIVER	11
GREYBULL	1
GUERNSEY	1
JACKSON	2
KEMMERER	1
LANDER	6
LARAMIE	20
LOVELL	1
LYMAN	1
MILLS	3
MOORCROFT	1
PINE BLUFFS	1
RAWLINS	9
RIVERTON	17
ROCK SPRINGS	21
SARATOGA	2
SHERIDAN	10
TEN SLEEP	1
THAYNE	1
TORRINGTON	2
WAMSUTTER	1
WHEATLAND	2
WORLAND	2
<b>Total</b>	<b>267</b>

# DRIVERS AGES 14 - 20

## 2018 FATAL CRASHES INVOLVING DRIVERS AGES 14 - 20 BY GENDER

Age	Male	Female	Total
14	1	0	1
16	3	0	3
17	0	1	1
18	2	2	4
19	2	1	3
20	1	1	2
Total	9	5	14

## 2018 INJURY CRASHES INVOLVING DRIVERS AGES 14 - 20 BY GENDER

Age	Male	Female	Total
14	8	2	10
15	9	10	19
16	65	49	114
17	69	50	119
18	50	43	93
19	58	65	123
20	52	40	92
Total	311	259	570

## 2018 PDO CRASHES INVOLVING DRIVERS AGES 14 - 20 BY GENDER

Age	Male	Female	Total
14	6	4	10
15	38	29	67
16	236	188	424
17	261	158	419
18	268	215	483
19	222	177	399
20	195	142	337
Total	1226	913	2139

# TRUCKS

## 2014 - 2018 TRUCK CRASHES FOR MEDIUM (>10K - <26K) & HEAVY (> 26K) TRUCKS BY SEVERITY

Year	Fatal Crashes	Total Fatalities	Truck Driver's Killed	Injury Crashes	Total Injuries	Truck Driver's Injured	PDO Crashes	Total Crashes
2014	28	39	5	317	470	173	1250	1595
2015	22	28	7	263	376	140	1000	1285
2016	20	25	5	260	346	138	1109	1389
2017	18	22	6	261	364	160	1130	1409
2018	21	23	6	287	400	155	1088	1396
<b>Total</b>	<b>109</b>	<b>137</b>	<b>29</b>	<b>1388</b>	<b>1956</b>	<b>766</b>	<b>5577</b>	<b>7074</b>

## 2018 TRUCK CRASHES FOR MEDIUM (>10K - <26K) & HEAVY (> 26K) TRUCKS BY ROADWAY TYPE

Roadway Type	Fatal Crashes	Injury Crashes	PDO Crashes	Total Crashes
Interstate	7	117	449	573
Primary	8	62	164	234
Secondary	0	10	28	38
City Street	0	2	43	45
County Road Rural	0	11	15	26
State Highway	1	1	7	9
M Route	0	5	56	61
BLM	0	0	1	1
Forest Service	0	0	1	1
Service Road	0	3	6	9
County Road Urban	0	0	2	2
Others	5	76	316	397
<b>Total</b>	<b>21</b>	<b>287</b>	<b>1088</b>	<b>1396</b>



**2018 SCHOOL BUS INVOLVED CRASHES BY  
COUNTY AND CRASH SEVERITY**

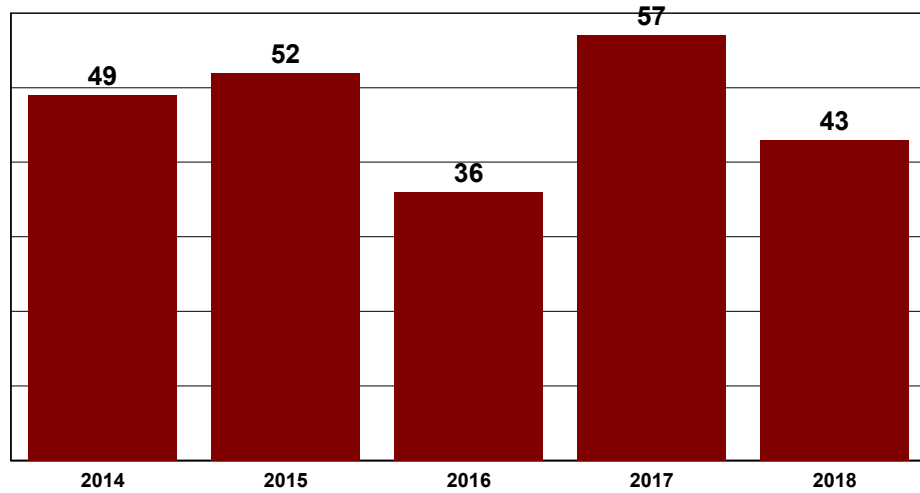
County	Fatal Crashes	Injury Crashes	PDO Crashes	Total
ALBANY	0	0	4	4
BIG HORN	0	0	2	2
CAMPBELL	0	3	3	6
CARBON	0	0	1	1
GOSHEN	0	0	1	1
HOT SPRINGS	0	0	1	1
LARAMIE	0	1	4	5
LINCOLN	0	1	1	2
NATRONA	0	1	3	4
PARK	0	1	1	2
SHERIDAN	0	0	2	2
SWEETWATER	0	1	7	8
TETON	0	2	2	4
UINTA	0	0	1	1
<b>Total</b>	<b>0</b>	<b>10</b>	<b>33</b>	<b>43</b>

**2018 SCHOOL BUS INVOLVED CRASHES BY  
COLLISION TYPE AND CRASH SEVERITY**

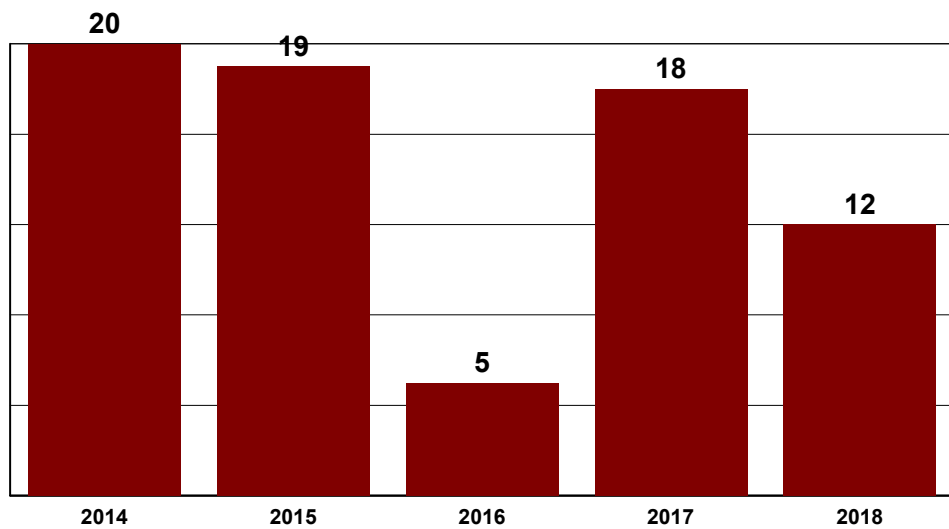
Collision Type	Fatal Crashes	Injury Crashes	PDO Crashes	Total
Fence (including Post)	0	0	2	2
Fire/Explosion	0	0	1	1
Motor Vehicle in Transport on Roadway	0	9	23	32
Parked Motor Vehicle	0	1	6	7
Traffic Sign Support	0	0	1	1
<b>Total</b>	<b>0</b>	<b>10</b>	<b>33</b>	<b>43</b>

# SCHOOL BUS CRASHES FOR 2014 - 2018

## Number of School Bus Crashes

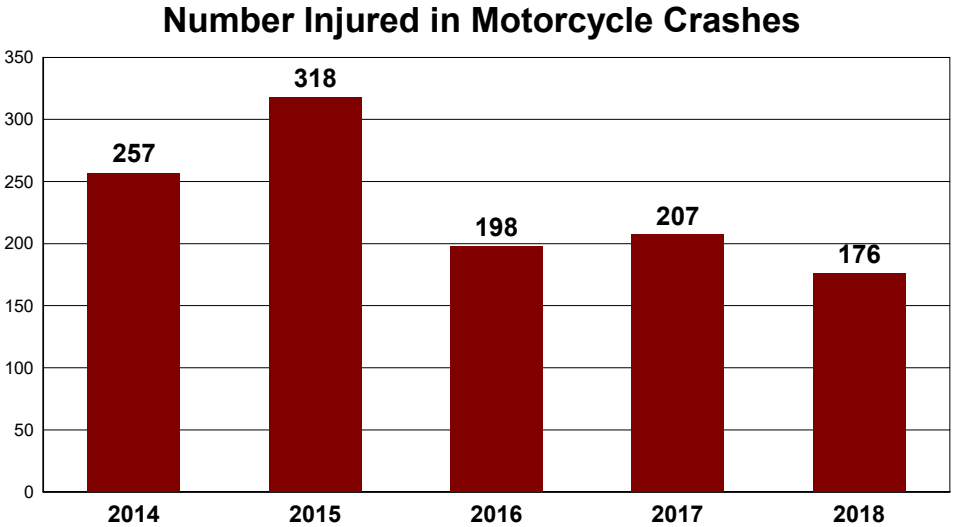
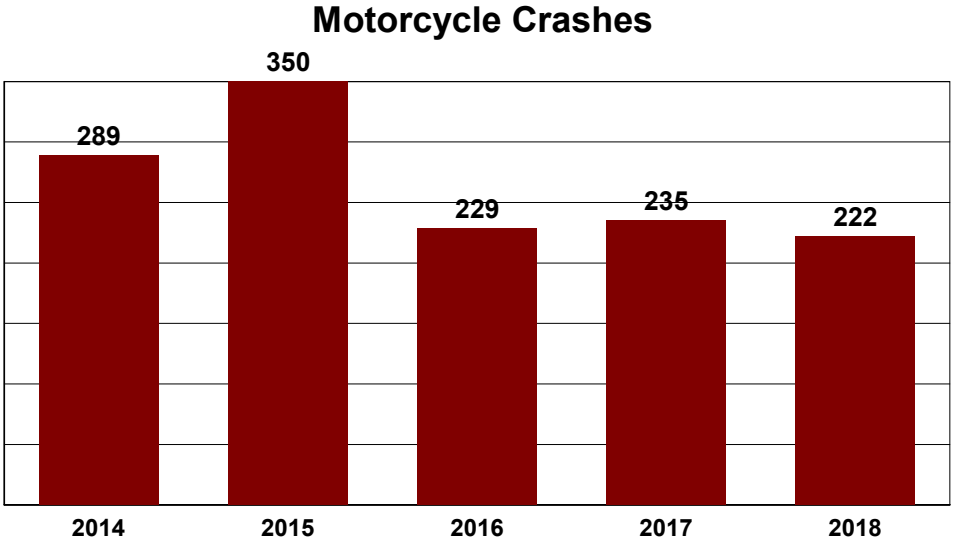


## Number Injured in School Bus Crashes





# MOTORCYCLE CRASHES FOR 2014 - 2018



**2018 MOTORCYCLE INVOLVED CRASHES BY  
COUNTY AND CRASH SEVERITY**

County	Fatal Crashes	Injury Crashes	PDO Crashes	Total Crashes
ALBANY	0	11	2	13
BIG HORN	1	9	1	11
CAMPBELL	1	12	3	16
CARBON	1	9	3	13
CONVERSE	1	4	0	5
CROOK	4	11	1	16
FREMONT	1	11	0	12
GOSHEN	0	1	0	1
JOHNSON	0	5	0	5
LARAMIE	2	18	7	27
LINCOLN	0	4	2	6
NATRONA	0	24	16	40
NIOBRARA	0	3	0	3
PARK	1	7	1	9
PLATTE	0	4	0	4
SHERIDAN	1	6	1	8
SUBLETTE	1	2	0	3
SWEETWATER	1	10	4	15
TETON	0	7	0	7
UINTA	0	2	2	4
WASHAKIE	0	0	2	2
WESTON	0	1	1	2
	<b>15</b>	<b>161</b>	<b>46</b>	<b>222</b>

**2018 MOTORCYCLE INVOLVED CRASHES BY  
COLLISION TYPE AND CRASH SEVERITY**

Collision Type	Fatal Crashes	Injury Crashes	PDO Crashes	Total Crashes
Antelope	0	3	0	3
Cargo/Equipment Loss of Shift	0	0	1	1
Cow	0	3	0	3
Deer	1	14	1	16
Delineator Post	1	2	0	3
Ditch	0	1	0	1
Equipment Failure	0	2	1	3
Fell/Jumped from a MV	0	2	0	2
Fence (including Post)	0	0	3	3
Guardrail Face	1	5	1	7
Mail Box	0	0	1	1
Motor Vehicle in Transport on Roadway	5	51	19	75
Other Non-Collision (MC Loss of Control)	7	70	13	90
Parked Motor Vehicle	0	2	6	8
Raised Median or Curb	0	3	0	3
Rock, Boulder, Rock Slide	0	1	0	1
Work Zone Channeling Device	0	2	0	2
	<b>15</b>	<b>161</b>	<b>46</b>	<b>222</b>

# APPENDIX



# Driver/Vehicle Information CASE NO. \_\_\_\_\_

**Vehicle No.** 01 02 03... \_\_\_\_\_

Last Name \_\_\_\_\_ First Name \_\_\_\_\_ MI \_\_\_\_\_ Gender \_\_\_\_\_ DOB (yyyy/mm/dd) \_\_\_\_\_

Street Number \_\_\_\_\_ Street Name \_\_\_\_\_

Mailing Address (PO Box Number) \_\_\_\_\_ City \_\_\_\_\_ State \_\_\_\_\_ Zip Code \_\_\_\_\_

Occupation \_\_\_\_\_ Employer \_\_\_\_\_ Age \_\_\_\_\_

Driver Phone  Home  Work  Cell Phone \_\_\_\_\_ Emp Phone  Home  Work  Cell Phone \_\_\_\_\_ SSN (fatals only) \_\_\_\_\_

Driver's License Number \_\_\_\_\_ State (FIPS) \_\_\_\_\_ Restrictions \_\_\_\_\_ CDL Endorsement \_\_\_\_\_

DL Type	DL Class	DL Status	No. of Vehicle Occupants (01 to 50)
1 - Not Licensed 2 - Driver License 3 - Instruction Permit 4 - I2 Permit-intermediate 5 - CDL 6 - CDL Permit 7 - No License Required 8 - Restricted License	1 - A 2 - B 3 - C 4 - M 5 - Improper or No Endorsement 6 - Other 7 - None	1 - Clear 2 - Expired 3 - Canceled or Denied 4 - Revoked 5 - Suspended 99 - Unknown	_____ Posted Speed _____ Estimated Speed _____

Vehicle Owner - same as driver

Last Name \_\_\_\_\_ First Name \_\_\_\_\_ MI \_\_\_\_\_  
 Street Number \_\_\_\_\_ Street Name \_\_\_\_\_ City \_\_\_\_\_ State \_\_\_\_\_ Zip Code \_\_\_\_\_

Make (ie, Chevrolet, Dodge, Toyota) \_\_\_\_\_ Model (ie, Silverado, Dakota, Solara) \_\_\_\_\_ Year \_\_\_\_\_ Expir. Date (mm/yy) \_\_\_\_\_

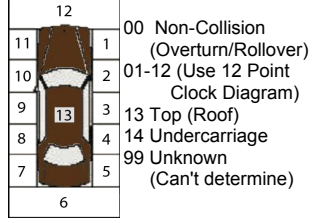
Vehicle Identification Number \_\_\_\_\_ License Plate No. \_\_\_\_\_ State (FIPS) \_\_\_\_\_ Color \_\_\_\_\_

Insurance E-Verified  Y-Yes  N-No Company \_\_\_\_\_ Policy # \_\_\_\_\_

Vehicle Towed  Y-Yes  N-No By \_\_\_\_\_ To \_\_\_\_\_

Extent of Damage \_\_\_\_\_ 01 - None 02 - Functional 03 - Minor 04 - Disabling 99 - Unknown  
 MV Damage   $\geq \$1,000$   01-Yes 02-No 99-Unk.

**Direction of Travel Prior to Crash**  
 01 - North 05 - South  
 02 - Northeast 06 - Southwest  
 03 - East 07 - West  
 04 - Southeast 08 - Northwest  
 99 - Unknown



Driver's Action (Officer Opinion Only)	1st choice
01 - No Improper Driving	_____
02 - Ran Off Road	_____
03 - Failed to Yield ROW	_____
04 - Disregarded Traffic Signs (e.g. Stop Sign)	_____
05 - Ran Red Light	_____
06 - Disregarded Other Road Marking	_____
07 - Speeding	_____
08 - Drove too Fast for Conditions	_____
09 - Improper Turn or No Signal	_____
10 - Improper Backing	_____
11 - Improper Passing	_____
12 - Improper Parking	_____
13 - Wrong Side/Wrong Way	_____
14 - Following too Close	_____
15 - Failed to Keep Proper Lane	_____
16 - Erratic/Reckless/Careless/Aggressive	_____
17 - Avoiding an Object on Road	_____
18 - Avoiding Animal	_____
19 - Avoiding Non-Motorist	_____
20 - Avoiding MV	_____
21 - Swerve Due to Wind/Slippery Surface	_____
22 - Over Corrected/Over Steered	_____
23 - Evading Law Enforcement	_____
24 - Other Improper Action	_____
99 - Unknown	_____

Driver's Condition (Officer Opinion Only)	1st choice
01 - Apparently Normal	_____
02 - Emotional (depressed, angry, disturbed...)	_____
03 - ill (Sick)	_____
04 - Fell Asleep, Fainted	_____
05 - Fatigued	_____
06 - Under Influence of Medication	_____
07 - Physical Disability	_____
08 - Suspected Drug Use	_____
09 - Suspected Alcohol Use	_____
10 - Other	_____
11 - Driver Inattention	_____
99 - Unknown	_____

Driver's Distraction (Officer Opinion Only)	1st choice
01 - Not Distracted	_____
02 - Electronic Communication Device (cell, pager...)	_____
03 - Other Electronic Device (palm, TV, computer...)	_____
04 - Other Distraction Inside MV (passenger, pet...)	_____
05 - Other Distraction Outside MV	_____
99 - Unknown	_____

Citations Issued (choose up to 5)	1st choice
01 - None	_____
02 - DWUI	_____
03 - Drinking - (i.e., open container)	_____
04 - Exceeding Speed Limit	_____
05 - Speed too Fast	_____
06 - Following too Close	_____
07 - Wrong Side of Road	_____
08 - Improper or No Signal	_____
09 - Improper Lane Use	_____
10 - Improper Turn	_____
11 - Improper Passing	_____
12 - Improper Starting Out	_____
13 - Failed to Grant ROW to Ped	_____
14 - Failed to Grant ROW to MV	_____
15 - Disregard Officer	_____
16 - Disregard Stop Light	_____
17 - Disregard Stop Sign	_____
18 - Disregard Other	_____
19 - Improper Parking	_____
20 - Reckless Driving	_____
21 - Vehicular Homicide	_____
22 - Driver's License Violation	_____
23 - Improper Backing	_____
24 - No Insurance	_____
25 - Hit & Run	_____
26 - Registration Violation	_____
27 - Failure to Use Seat Belt	_____
28 - Charges Pending	_____
29 - Fed R & R Driver	_____
30 - Fed R & R Vehicle	_____
31 - Racing	_____
32 - Careless	_____
33 - Other (explain in narrative)	_____

Suspect Alcohol	Alcohol Test Type
01 - Yes	01 - No Test Performed
02 - No	02 - Test Refused
03 - Test Requested	03 - Blood
99 - Unknown	04 - Serum
	05 - Breath
	06 - Urine
	07 - Other
	99 - Unknown

Suspect Drugs	Drug Test Type
01 - Yes	01 - No Test Performed
02 - No	02 - Test Refused
03 - Test Requested	03 - Blood
99 - Unknown	04 - Serum
	05 - Urine
	06 - Other
	99 - Unknown

**DL Investigation** \_\_\_\_\_ 01 - Yes  
 02 - No  
 99 - Unknown

If Alcohol Test performed other than Breath then form 902E will be required with results at a later date.





1st event Sequence choose up to 4:
2nd event
3rd event Most Harmful Event choose 1
4th event

- Non-Collision
01 - Overturn/Rollover
02 - Fire/Explosion
03 - Immersion
04 - Jackknife
05 - Cargo/Equipment Loss or Shift
06 - Equipment Failure
07 - Separation of Units
08 - Ran Off the Road Right
09 - Ran Off the Road Left
10 - Cross Median
74 - Cross Centerline
11 - Downhill Runaway
12 - Fell/Jumped from a MV
13 - Thrown or Falling Object
14 - Avoiding an Object on Road
15 - Avoiding an Animal on Road
16 - Carbon Monoxide (CO) Poisoning
17 - Injuries by being thrown against part of vehicle
18 - Other Non-Collision (MC Loss of Control)

- Collision w/ Person, MV, or Non-Fixed Object
19 - Pedestrian
20 - Pedacycle
21 - Railway Vehicle
22 - Motor Vehicle in Transport on Roadway
23 - Motor Vehicle in Transport on OTHER Roadway
24 - Parked Motor Vehicle
25 - Struck by Falling, Shifting Cargo or Anything Else Set in Motion by Motor Vehicle (Multi Vehicle Crash)
26 - Other NON-Fixed Object
27 - Work Zone/Maintenance Equipment
28 - Work Zone Channeling Device
29 - Object Set in Motion by Another Vehicle (Single Vehicle Crash)

- Animals
30 - Horse
31 - Cow
32 - Pig
33 - Sheep
34 - Other Domestic (Dog, Llama, ...)
35 - Elk
36 - Deer
37 - Moose
38 - Antelope
39 - Buffalo
40 - Other Wild

- Collision w/ Fixed Object
41 - Guardrail End
42 - Guardrail Face
43 - Impact Attenuator/Crash Cushion
44 - Bridge Pier or Support
45 - Bridge Overhead Structure
46 - Bridge Rail
47 - Concrete Traffic Barrier/Jersey Barrier
48 - Other Traffic Barrier (Includes temporary)
49 - Utility Pole/Light Support
50 - Traffic Signal Support
51 - Traffic Sign Support
52 - Overhead Traffic Sign
53 - Sign Support Single Post
54 - Sign Support Multiple Post
55 - Other Traffic Sign Support
56 - Barricade
57 - Tree/Shrubbery
58 - Cut Slope
59 - Road Approach
60 - Rock, Boulder, Rock Slide
61 - End of Drainage Pipe/Structure/Culvert
62 - Building or Other Structure Wall
63 - Fence (Including Post)
64 - Raised Median or Curb
65 - Delineator Post
66 - Earth Embankment/Berm
67 - Ditch
68 - Snow Embankment
69 - Mail Box
70 - Tunnel
71 - Cattle Guard
72 - Other Fixed Object
73 - Cable Barrier
99 - Unknown

Motor Vehicle Unit Type
01 - Motor Vehicle in Transport
02 - Parked Motor Vehicle
03 - Working Vehicle/Equipment
Commercial Motor Vehicle or HM Placard
01 - Yes 02 - No 99 - Unknown
if yes, complete CMV supplement

Vehicle Owner
01 - Same as Driver
02 - Other
03 - Passenger
04 - Relative
05 - Rental Vehicle
06 - Commercial
07 - Occupant
08 - Vehicle Parked
09 - Federal Law Enforcement
10 - Federal Other
11 - County Law Enforcement
12 - County Fire Department
13 - County Other
14 - City Law Enforcement
15 - City Fire Department
16 - City Other
17 - Government Other
18 - Ambulance/EMS
19 - WHP
20 - State Law Enforc Other

Vehicle Type
01 - Passenger (Not a SUV)
02 - Passenger Van
03 - PU
04 - School Bus
05 - Other Bus
06 - Transit Bus
07 - Charter Bus
08 - MC >150 cc
09 - Off Road MC
13 - Other Vehicle
14 - SUV
15 - Cargo Van
16 - Motor Home
17 - Light Truck (>= 10K)
18 - Medium Truck (>10K - 26K)
19 - Heavy Truck (>26K)
20 - Farm Equipment
21 - Construction Vehicle
22 - MC <150 cc
23 - Moped
24 - Snowmobile
26 - ATV
27 - MPV
99 - Unknown

Non-Commercial Trailer Style
01 - No Trailer
02 - Camping Trailer
03 - Mobile Home
04 - Utility Trailer
05 - Boat/Jet Ski Trailer
06 - Towed Vehicle
07 - Horse/Stock Trailer
08 - Motorcycle Trailer
09 - Multiple Trailers
10 - Other (ie. Bicycle)
99 - Unknown

Underride/Override
01 - No Underride or Override
02 - Underride-Compartment Intrusion
03 - Underride-No Compartment Intrusion
04 - Underride-Compartment Intrusion Unknown
05 - Override-Motor Vehicle in Transport
06 - Override-Other Motor Vehicle
99 - Unknown if Underride or Override

Emergency Vehicle Use
01 - Yes 02 - No 99 - Unknown

Emergency Equipment Activated
01 - Yes 02 - No 99 - Unknown

Special Function of MV in Transport
01 - None
02 - Police
03 - Ambulance/EMS
04 - Fire Truck
05 - Military
06 - Snow Plow
07 - Tow Truck
08 - MV used as School Bus
09 - MV used as Other Bus
10 - Construction Equipment
11 - Farm Equipment
12 - Taxi
99 - Unknown

Contributing Circumstance
01 - None
02 - Brakes
03 - Trailer Brakes
04 - Steering
05 - Power Train
06 - Suspension
07 - Tires
08 - Wheels
09 - Lights (Head, Signal or Tail)
10 - Windows/Windshield
11 - Rain/Snow/Ice on Windshield
12 - Tinted Windows
13 - Vehicle Cargo Blocking View
14 - Exhaust System
15 - Oversized Load
16 - Defroster
17 - Mirrors
18 - Wipers
19 - Truck Coupling/Trailer Hitch/Safety Chain
20 - Stalled Vehicle
21 - Cruise Control
1st choice
2nd choice
22 - Other
99-Unknown

Vehicle Maneuver/Action prior to crash
01 - Straight Ahead
02 - Backing
03 - Changing Lanes
04 - Overtaking/Passing
05 - Turning Right
06 - Turning Left
07 - Make U-Turn
08 - Leaving a Traffic Lane/Parking
09 - Entering a Traffic Lane
10 - Slowing
11 - Negotiating a Curve
12 - Parked
13 - Stopped in Traffic
14 - Driverless Motor Vehicle
15 - Trafficway Maintenance
16 - Other
99 - Unknown

Road Surface Grade
01 - Concrete 01 - Level
02 - Asphalt 02 - Hillcrest
03 - Gravel/Rock 03 - Uphill
04 - Dirt 04 - Downhill
05 - Brick/Stone 05 - Sag (Bottom)
99 - Unknown 99 - Unknown

Horizontal Alignment
01 - Straight 03 - Curve Left
02 - Curve Right 99 - Unknown

Total No. Lanes
01 - 06, 99 = Unknown (exclude turn lanes)

Traffic Control Working Properly
01 - Yes 02 - No 99 - Unknown

Traffic Control
01 - None
02 - Stop Sign
03 - Yield Sign
04 - Flashing Traffic Signal
05 - Do Not Enter Sign
06 - Traffic Signal
07 - Traffic Signal w/ Ped
08 - Traffic Signal w/ Ped & Audible Signals
09 - Person (Officer/Flagger, Xing Guard, etc)
10 - Pedestrian Crossing
11 - No Passing Zone
12 - Warning Signs
13 - Pavement Markings
14 - Traffic Barrels/Cones
15 - Temporary Jersey Barrier
16 - School Bus Flashing Stop Lamps
17 - School Zone Crossing
18 - RR Crossing Signal
19 - RR Crossing Signal & Gate
20 - RR Crossing Cross Buck Sign Only
21 - RR Crossing Cross Buck with Stop Sign
22 - RR Crossing Cross Buck with Yield Sign
23 - Other
99 - Unknown

Trafficway Description
01 - Two-Way, Not Divided
02 - Two-Way, Not Divided w/ Continuous Left Turn Lane
03 - Two-Way, Divided, Unprotected (Painted, >4 Ft) Median
04 - Two-Way, Divided, Positive Median Barrier
05 - One-Way Trafficway
99 - Unknown

Rumble Strips Present
01 - Yes 02 - No 99 - Unknown

Rumble Strips Applicable
01 - Yes 02 - No 99 - Unknown

Rumble Strips
01 - None
02 - Centerline Rumble Strips
03 - Median Shoulder Only
04 - Transverse Rumble Strips (Road Apprch)
05 - Both Shoulders
06 - Both Centerline and Outside Shoulder
07 - Outside Shoulders Only
99 - Unknown

# Driver Information

1

Driver's Action (choose up to 4)	1st choice	2nd choice	3rd choice	4th choice
01 - No Improper Driving	<input type="checkbox"/>	<input type="checkbox"/>	<input type="checkbox"/>	<input type="checkbox"/>
02 - Ran Off Road	<input type="checkbox"/>	<input type="checkbox"/>	<input type="checkbox"/>	<input type="checkbox"/>
03 - Failed to Yield ROW	<input type="checkbox"/>	<input type="checkbox"/>	<input type="checkbox"/>	<input type="checkbox"/>
04 - Disregarded Traffic Signs (e.g. Stop Sign)	<input type="checkbox"/>	<input type="checkbox"/>	<input type="checkbox"/>	<input type="checkbox"/>
05 - Ran Red Light	<input type="checkbox"/>	<input type="checkbox"/>	<input type="checkbox"/>	<input type="checkbox"/>
06 - Disregarded Other Road Marking	<input type="checkbox"/>	<input type="checkbox"/>	<input type="checkbox"/>	<input type="checkbox"/>
07 - Speeding	<input type="checkbox"/>	<input type="checkbox"/>	<input type="checkbox"/>	<input type="checkbox"/>
08 - Drove too Fast for Conditions	<input type="checkbox"/>	<input type="checkbox"/>	<input type="checkbox"/>	<input type="checkbox"/>
09 - Improper Turn or No Signal	<input type="checkbox"/>	<input type="checkbox"/>	<input type="checkbox"/>	<input type="checkbox"/>
10 - Improper Backing	<input type="checkbox"/>	<input type="checkbox"/>	<input type="checkbox"/>	<input type="checkbox"/>
11 - Improper Passing	<input type="checkbox"/>	<input type="checkbox"/>	<input type="checkbox"/>	<input type="checkbox"/>
12 - Improper Parking	<input type="checkbox"/>	<input type="checkbox"/>	<input type="checkbox"/>	<input type="checkbox"/>
13 - Wrong Side/Wrong Way	<input type="checkbox"/>	<input type="checkbox"/>	<input type="checkbox"/>	<input type="checkbox"/>
14 - Following too Close	<input type="checkbox"/>	<input type="checkbox"/>	<input type="checkbox"/>	<input type="checkbox"/>
15 - Failed to Keep Proper Lane	<input type="checkbox"/>	<input type="checkbox"/>	<input type="checkbox"/>	<input type="checkbox"/>
16 - Erratic/Reckless/Careless/Aggressive	<input type="checkbox"/>	<input type="checkbox"/>	<input type="checkbox"/>	<input type="checkbox"/>
17 - Avoiding an Object on Road	<input type="checkbox"/>	<input type="checkbox"/>	<input type="checkbox"/>	<input type="checkbox"/>
18 - Avoiding Animal	<input type="checkbox"/>	<input type="checkbox"/>	<input type="checkbox"/>	<input type="checkbox"/>
19 - Avoiding Non-Motorist	<input type="checkbox"/>	<input type="checkbox"/>	<input type="checkbox"/>	<input type="checkbox"/>
20 - Avoiding MV	<input type="checkbox"/>	<input type="checkbox"/>	<input type="checkbox"/>	<input type="checkbox"/>
21 - Swerve Due to Wind/Slippery Surface	<input type="checkbox"/>	<input type="checkbox"/>	<input type="checkbox"/>	<input type="checkbox"/>
22 - Over Corrected/Over Steered	<input type="checkbox"/>	<input type="checkbox"/>	<input type="checkbox"/>	<input type="checkbox"/>
23 - Evading Law Enforcement	<input type="checkbox"/>	<input type="checkbox"/>	<input type="checkbox"/>	<input type="checkbox"/>
24 - Other Improper Action	<input type="checkbox"/>	<input type="checkbox"/>	<input type="checkbox"/>	<input type="checkbox"/>
99 - Unknown	<input type="checkbox"/>	<input type="checkbox"/>	<input type="checkbox"/>	<input type="checkbox"/>

Driver's Condition (choose up to 2)	1st choice	2nd choice
01 - Apparently Normal	<input type="checkbox"/>	<input type="checkbox"/>
02 - Emotional (depressed, angry, disturbed...)	<input type="checkbox"/>	<input type="checkbox"/>
03 - ill (Sick)	<input type="checkbox"/>	<input type="checkbox"/>
04 - Fell Asleep, Fainted	<input type="checkbox"/>	<input type="checkbox"/>
05 - Fatigued	<input type="checkbox"/>	<input type="checkbox"/>
06 - Under Influence of Medication	<input type="checkbox"/>	<input type="checkbox"/>
07 - Physical Disability	<input type="checkbox"/>	<input type="checkbox"/>
08 - Suspected Drug Use	<input type="checkbox"/>	<input type="checkbox"/>
09 - Suspected Alcohol Use	<input type="checkbox"/>	<input type="checkbox"/>
10 - Other	<input type="checkbox"/>	<input type="checkbox"/>
11 - Driver Inattention	<input type="checkbox"/>	<input type="checkbox"/>
99 - Unknown	<input type="checkbox"/>	<input type="checkbox"/>

Citations Issued (choose up to 5)	1st choice	2nd choice	3rd choice	4th choice	5th choice
01 - None	<input type="checkbox"/>	<input type="checkbox"/>	<input type="checkbox"/>	<input type="checkbox"/>	<input type="checkbox"/>
02 - DWUI	<input type="checkbox"/>	<input type="checkbox"/>	<input type="checkbox"/>	<input type="checkbox"/>	<input type="checkbox"/>
03 - Drinking - (i.e., open container)	<input type="checkbox"/>	<input type="checkbox"/>	<input type="checkbox"/>	<input type="checkbox"/>	<input type="checkbox"/>
04 - Exceeding Speed Limit	<input type="checkbox"/>	<input type="checkbox"/>	<input type="checkbox"/>	<input type="checkbox"/>	<input type="checkbox"/>
05 - Speed too Fast	<input type="checkbox"/>	<input type="checkbox"/>	<input type="checkbox"/>	<input type="checkbox"/>	<input type="checkbox"/>
06 - Following too Close	<input type="checkbox"/>	<input type="checkbox"/>	<input type="checkbox"/>	<input type="checkbox"/>	<input type="checkbox"/>
07 - Wrong Side of Road	<input type="checkbox"/>	<input type="checkbox"/>	<input type="checkbox"/>	<input type="checkbox"/>	<input type="checkbox"/>
08 - Improper or No Signal	<input type="checkbox"/>	<input type="checkbox"/>	<input type="checkbox"/>	<input type="checkbox"/>	<input type="checkbox"/>
09 - Improper Lane Use	<input type="checkbox"/>	<input type="checkbox"/>	<input type="checkbox"/>	<input type="checkbox"/>	<input type="checkbox"/>
10 - Improper Turn	<input type="checkbox"/>	<input type="checkbox"/>	<input type="checkbox"/>	<input type="checkbox"/>	<input type="checkbox"/>
11 - Improper Passing	<input type="checkbox"/>	<input type="checkbox"/>	<input type="checkbox"/>	<input type="checkbox"/>	<input type="checkbox"/>
12 - Improper Starting Out	<input type="checkbox"/>	<input type="checkbox"/>	<input type="checkbox"/>	<input type="checkbox"/>	<input type="checkbox"/>
13 - Failed to Grant ROW to Ped	<input type="checkbox"/>	<input type="checkbox"/>	<input type="checkbox"/>	<input type="checkbox"/>	<input type="checkbox"/>
14 - Failed to Grant ROW to MV	<input type="checkbox"/>	<input type="checkbox"/>	<input type="checkbox"/>	<input type="checkbox"/>	<input type="checkbox"/>
15 - Disregard Officer	<input type="checkbox"/>	<input type="checkbox"/>	<input type="checkbox"/>	<input type="checkbox"/>	<input type="checkbox"/>
16 - Disregard Stop Light	<input type="checkbox"/>	<input type="checkbox"/>	<input type="checkbox"/>	<input type="checkbox"/>	<input type="checkbox"/>
17 - Disregard Stop Sign	<input type="checkbox"/>	<input type="checkbox"/>	<input type="checkbox"/>	<input type="checkbox"/>	<input type="checkbox"/>
18 - Disregard Other	<input type="checkbox"/>	<input type="checkbox"/>	<input type="checkbox"/>	<input type="checkbox"/>	<input type="checkbox"/>
19 - Improper Parking	<input type="checkbox"/>	<input type="checkbox"/>	<input type="checkbox"/>	<input type="checkbox"/>	<input type="checkbox"/>
20 - Reckless Driving	<input type="checkbox"/>	<input type="checkbox"/>	<input type="checkbox"/>	<input type="checkbox"/>	<input type="checkbox"/>
21 - Vehicular Homicide	<input type="checkbox"/>	<input type="checkbox"/>	<input type="checkbox"/>	<input type="checkbox"/>	<input type="checkbox"/>
22 - Driver's License Violation	<input type="checkbox"/>	<input type="checkbox"/>	<input type="checkbox"/>	<input type="checkbox"/>	<input type="checkbox"/>
23 - Improper Backing	<input type="checkbox"/>	<input type="checkbox"/>	<input type="checkbox"/>	<input type="checkbox"/>	<input type="checkbox"/>
24 - No Insurance	<input type="checkbox"/>	<input type="checkbox"/>	<input type="checkbox"/>	<input type="checkbox"/>	<input type="checkbox"/>
25 - Hit & Run	<input type="checkbox"/>	<input type="checkbox"/>	<input type="checkbox"/>	<input type="checkbox"/>	<input type="checkbox"/>
26 - Registration Violation	<input type="checkbox"/>	<input type="checkbox"/>	<input type="checkbox"/>	<input type="checkbox"/>	<input type="checkbox"/>
27 - Failure to Use Seat Belt	<input type="checkbox"/>	<input type="checkbox"/>	<input type="checkbox"/>	<input type="checkbox"/>	<input type="checkbox"/>
28 - Charges Pending	<input type="checkbox"/>	<input type="checkbox"/>	<input type="checkbox"/>	<input type="checkbox"/>	<input type="checkbox"/>
29 - Fed R & R Driver	<input type="checkbox"/>	<input type="checkbox"/>	<input type="checkbox"/>	<input type="checkbox"/>	<input type="checkbox"/>
30 - Fed R & R Vehicle	<input type="checkbox"/>	<input type="checkbox"/>	<input type="checkbox"/>	<input type="checkbox"/>	<input type="checkbox"/>
31 - Racing	<input type="checkbox"/>	<input type="checkbox"/>	<input type="checkbox"/>	<input type="checkbox"/>	<input type="checkbox"/>
32 - Careless	<input type="checkbox"/>	<input type="checkbox"/>	<input type="checkbox"/>	<input type="checkbox"/>	<input type="checkbox"/>
33 - Other (explain in narrative)	<input type="checkbox"/>	<input type="checkbox"/>	<input type="checkbox"/>	<input type="checkbox"/>	<input type="checkbox"/>

Driver's Distraction (choose one)	
01 - Not Distracted	<input type="checkbox"/>
02 - Electronic Communication Device (cell, pager...)	<input type="checkbox"/>
03 - Other Electronic Device (palm, TV, computer...)	<input type="checkbox"/>
04 - Other Distraction Inside MV (passenger, pet...)	<input type="checkbox"/>
05 - Other Distraction Outside MV	<input type="checkbox"/>
99 - Unknown	<input type="checkbox"/>

Suspect Alcohol	Alcohol Test Type
01 - Yes	01 - No Test Performed
02 - No	02 - Test Refused
99 - Unknown	03 - Blood
	04 - Serum
	05 - Breath
	06 - Urine
	07 - Other
	99 - Unknown

Suspect Drugs*	
01 - Yes	<input type="checkbox"/>
02 - No	<input type="checkbox"/>
99 - Unknown	<input type="checkbox"/>

DL Investigation	01 - Yes	02 - No	99 - Unknown
<input type="checkbox"/>	<input type="checkbox"/>	<input type="checkbox"/>	<input type="checkbox"/>

**\* If Drug Test performed then form 902E is required with recorded results at a later date.**

If Alcohol Test performed other than Breath then form 902E will be required with results at a later date.

Alcohol Test Result
<input type="checkbox"/>

2

Driver's Action (choose up to 4)	1st choice	2nd choice	3rd choice	4th choice
01 - No Improper Driving	<input type="checkbox"/>	<input type="checkbox"/>	<input type="checkbox"/>	<input type="checkbox"/>
02 - Ran Off Road	<input type="checkbox"/>	<input type="checkbox"/>	<input type="checkbox"/>	<input type="checkbox"/>
03 - Failed to Yield ROW	<input type="checkbox"/>	<input type="checkbox"/>	<input type="checkbox"/>	<input type="checkbox"/>
04 - Disregarded Traffic Signs (e.g. Stop Sign)	<input type="checkbox"/>	<input type="checkbox"/>	<input type="checkbox"/>	<input type="checkbox"/>
05 - Ran Red Light	<input type="checkbox"/>	<input type="checkbox"/>	<input type="checkbox"/>	<input type="checkbox"/>
06 - Disregarded Other Road Marking	<input type="checkbox"/>	<input type="checkbox"/>	<input type="checkbox"/>	<input type="checkbox"/>
07 - Speeding	<input type="checkbox"/>	<input type="checkbox"/>	<input type="checkbox"/>	<input type="checkbox"/>
08 - Drove too Fast for Conditions	<input type="checkbox"/>	<input type="checkbox"/>	<input type="checkbox"/>	<input type="checkbox"/>
09 - Improper Turn or No Signal	<input type="checkbox"/>	<input type="checkbox"/>	<input type="checkbox"/>	<input type="checkbox"/>
10 - Improper Backing	<input type="checkbox"/>	<input type="checkbox"/>	<input type="checkbox"/>	<input type="checkbox"/>
11 - Improper Passing	<input type="checkbox"/>	<input type="checkbox"/>	<input type="checkbox"/>	<input type="checkbox"/>
12 - Improper Parking	<input type="checkbox"/>	<input type="checkbox"/>	<input type="checkbox"/>	<input type="checkbox"/>
13 - Wrong Side/Wrong Way	<input type="checkbox"/>	<input type="checkbox"/>	<input type="checkbox"/>	<input type="checkbox"/>
14 - Following too Close	<input type="checkbox"/>	<input type="checkbox"/>	<input type="checkbox"/>	<input type="checkbox"/>
15 - Failed to Keep Proper Lane	<input type="checkbox"/>	<input type="checkbox"/>	<input type="checkbox"/>	<input type="checkbox"/>
16 - Erratic/Reckless/Careless/Aggressive	<input type="checkbox"/>	<input type="checkbox"/>	<input type="checkbox"/>	<input type="checkbox"/>
17 - Avoiding an Object on Road	<input type="checkbox"/>	<input type="checkbox"/>	<input type="checkbox"/>	<input type="checkbox"/>
18 - Avoiding Animal	<input type="checkbox"/>	<input type="checkbox"/>	<input type="checkbox"/>	<input type="checkbox"/>
19 - Avoiding Non-Motorist	<input type="checkbox"/>	<input type="checkbox"/>	<input type="checkbox"/>	<input type="checkbox"/>
20 - Avoiding MV	<input type="checkbox"/>	<input type="checkbox"/>	<input type="checkbox"/>	<input type="checkbox"/>
21 - Swerve Due to Wind/Slippery Surface	<input type="checkbox"/>	<input type="checkbox"/>	<input type="checkbox"/>	<input type="checkbox"/>
22 - Over Corrected/Over Steered	<input type="checkbox"/>	<input type="checkbox"/>	<input type="checkbox"/>	<input type="checkbox"/>
23 - Evading Law Enforcement	<input type="checkbox"/>	<input type="checkbox"/>	<input type="checkbox"/>	<input type="checkbox"/>
24 - Other Improper Action	<input type="checkbox"/>	<input type="checkbox"/>	<input type="checkbox"/>	<input type="checkbox"/>
99 - Unknown	<input type="checkbox"/>	<input type="checkbox"/>	<input type="checkbox"/>	<input type="checkbox"/>

Driver's Condition (choose up to 2)	1st choice	2nd choice
01 - Apparently Normal	<input type="checkbox"/>	<input type="checkbox"/>
02 - Emotional (depressed, angry, disturbed...)	<input type="checkbox"/>	<input type="checkbox"/>
03 - ill (Sick)	<input type="checkbox"/>	<input type="checkbox"/>
04 - Fell Asleep, Fainted	<input type="checkbox"/>	<input type="checkbox"/>
05 - Fatigued	<input type="checkbox"/>	<input type="checkbox"/>
06 - Under Influence of Meds	<input type="checkbox"/>	<input type="checkbox"/>
07 - Physical Disability	<input type="checkbox"/>	<input type="checkbox"/>
08 - Suspected Drug Use	<input type="checkbox"/>	<input type="checkbox"/>
09 - Suspected Alcohol Use	<input type="checkbox"/>	<input type="checkbox"/>
10 - Other	<input type="checkbox"/>	<input type="checkbox"/>
11 - Driver Inattention	<input type="checkbox"/>	<input type="checkbox"/>
99 - Unknown	<input type="checkbox"/>	<input type="checkbox"/>

Citations Issued (choose up to 5)	1st choice	2nd choice	3rd choice	4th choice	5th choice
01 - None	<input type="checkbox"/>	<input type="checkbox"/>	<input type="checkbox"/>	<input type="checkbox"/>	<input type="checkbox"/>
02 - DWUI	<input type="checkbox"/>	<input type="checkbox"/>	<input type="checkbox"/>	<input type="checkbox"/>	<input type="checkbox"/>
03 - Drinking - (i.e., open container)	<input type="checkbox"/>	<input type="checkbox"/>	<input type="checkbox"/>	<input type="checkbox"/>	<input type="checkbox"/>
04 - Exceeding Speed Limit	<input type="checkbox"/>	<input type="checkbox"/>	<input type="checkbox"/>	<input type="checkbox"/>	<input type="checkbox"/>
05 - Speed too Fast	<input type="checkbox"/>	<input type="checkbox"/>	<input type="checkbox"/>	<input type="checkbox"/>	<input type="checkbox"/>
06 - Following too Close	<input type="checkbox"/>	<input type="checkbox"/>	<input type="checkbox"/>	<input type="checkbox"/>	<input type="checkbox"/>
07 - Wrong Side of Road	<input type="checkbox"/>	<input type="checkbox"/>	<input type="checkbox"/>	<input type="checkbox"/>	<input type="checkbox"/>
08 - Improper or No Signal	<input type="checkbox"/>	<input type="checkbox"/>	<input type="checkbox"/>	<input type="checkbox"/>	<input type="checkbox"/>
09 - Improper Lane Use	<input type="checkbox"/>	<input type="checkbox"/>	<input type="checkbox"/>	<input type="checkbox"/>	<input type="checkbox"/>
10 - Improper Turn	<input type="checkbox"/>	<input type="checkbox"/>	<input type="checkbox"/>	<input type="checkbox"/>	<input type="checkbox"/>
11 - Improper Passing	<input type="checkbox"/>	<input type="checkbox"/>	<input type="checkbox"/>	<input type="checkbox"/>	<input type="checkbox"/>
12 - Improper Starting Out	<input type="checkbox"/>	<input type="checkbox"/>	<input type="checkbox"/>	<input type="checkbox"/>	<input type="checkbox"/>
13 - Failed to Grant ROW to Ped	<input type="checkbox"/>	<input type="checkbox"/>	<input type="checkbox"/>	<input type="checkbox"/>	<input type="checkbox"/>
14 - Failed to Grant ROW to MV	<input type="checkbox"/>	<input type="checkbox"/>	<input type="checkbox"/>	<input type="checkbox"/>	<input type="checkbox"/>
15 - Disregard Officer	<input type="checkbox"/>	<input type="checkbox"/>	<input type="checkbox"/>	<input type="checkbox"/>	<input type="checkbox"/>
16 - Disregard Stop Light	<input type="checkbox"/>	<input type="checkbox"/>	<input type="checkbox"/>	<input type="checkbox"/>	<input type="checkbox"/>
17 - Disregard Stop Sign	<input type="checkbox"/>	<input type="checkbox"/>	<input type="checkbox"/>	<input type="checkbox"/>	<input type="checkbox"/>
18 - Disregard Other	<input type="checkbox"/>	<input type="checkbox"/>	<input type="checkbox"/>	<input type="checkbox"/>	<input type="checkbox"/>
19 - Improper Parking	<input type="checkbox"/>	<input type="checkbox"/>	<input type="checkbox"/>	<input type="checkbox"/>	<input type="checkbox"/>
20 - Reckless Driving	<input type="checkbox"/>	<input type="checkbox"/>	<input type="checkbox"/>	<input type="checkbox"/>	<input type="checkbox"/>
21 - Vehicular Homicide	<input type="checkbox"/>	<input type="checkbox"/>	<input type="checkbox"/>	<input type="checkbox"/>	<input type="checkbox"/>
22 - Driver's License Violation	<input type="checkbox"/>	<input type="checkbox"/>	<input type="checkbox"/>	<input type="checkbox"/>	<input type="checkbox"/>
23 - Improper Backing	<input type="checkbox"/>	<input type="checkbox"/>	<input type="checkbox"/>	<input type="checkbox"/>	<input type="checkbox"/>
24 - No Insurance	<input type="checkbox"/>	<input type="checkbox"/>	<input type="checkbox"/>	<input type="checkbox"/>	<input type="checkbox"/>
25 - Hit & Run	<input type="checkbox"/>	<input type="checkbox"/>	<input type="checkbox"/>	<input type="checkbox"/>	<input type="checkbox"/>
26 - Registration Violation	<input type="checkbox"/>	<input type="checkbox"/>	<input type="checkbox"/>	<input type="checkbox"/>	<input type="checkbox"/>
27 - Failure to Use Seat Belt	<input type="checkbox"/>	<input type="checkbox"/>	<input type="checkbox"/>	<input type="checkbox"/>	<input type="checkbox"/>
28 - Charges Pending	<input type="checkbox"/>	<input type="checkbox"/>	<input type="checkbox"/>	<input type="checkbox"/>	<input type="checkbox"/>
29 - Fed R & R Driver	<input type="checkbox"/>	<input type="checkbox"/>	<input type="checkbox"/>	<input type="checkbox"/>	<input type="checkbox"/>
30 - Fed R & R Vehicle	<input type="checkbox"/>	<input type="checkbox"/>	<input type="checkbox"/>	<input type="checkbox"/>	<input type="checkbox"/>
31 - Racing	<input type="checkbox"/>	<input type="checkbox"/>	<input type="checkbox"/>	<input type="checkbox"/>	<input type="checkbox"/>
32 - Careless	<input type="checkbox"/>	<input type="checkbox"/>	<input type="checkbox"/>	<input type="checkbox"/>	<input type="checkbox"/>
33 - Other (explain in narrative)	<input type="checkbox"/>	<input type="checkbox"/>	<input type="checkbox"/>	<input type="checkbox"/>	<input type="checkbox"/>

Driver's Distraction (choose one)	
01 - Not Distracted	<input type="checkbox"/>
02 - Electronic Communication Device (cell, pager...)	<input type="checkbox"/>
03 - Other Electronic Device (palm, TV, computer...)	<input type="checkbox"/>
04 - Other Distraction Inside MV (passenger, pet...)	<input type="checkbox"/>
05 - Other Distraction Outside MV	<input type="checkbox"/>
99 - Unknown	<input type="checkbox"/>

Suspect Alcohol	Alcohol Test Type
01 - Yes	01 - No Test Performed
02 - No	02 - Test Refused
99 - Unknown	03 - Blood
	04 - Serum
	05 - Breath
	06 - Urine
	07 - Other
	99 - Unknown

Suspect Drugs*	
01 - Yes	<input type="checkbox"/>
02 - No	<input type="checkbox"/>
99 - Unknown	<input type="checkbox"/>

DL Investigation	01 - Yes	02 - No	99 - Unknown
<input type="checkbox"/>	<input type="checkbox"/>	<input type="checkbox"/>	<input type="checkbox"/>

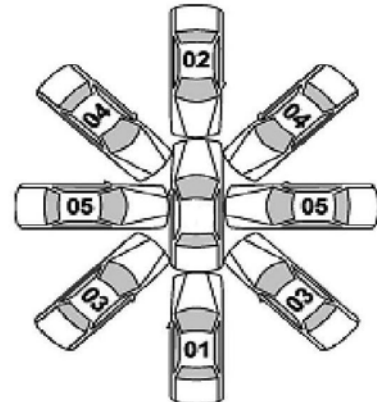
**\* If Drug Test performed then form 902E is required with recorded results at a later date.**

If Alcohol Test performed other than Breath then form 902E will be required with results at a later date.

Alcohol Test Result
<input type="checkbox"/>

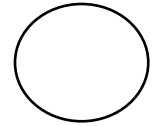
# Base Information

<p><b>FIRST HARMFUL EVENT</b> <input type="text"/></p> <p><u>Non - Collision:</u>                  01 - Overturn/Rollover                  02 - Fire/Explosion                  03 - Immersion                  04 - Jackknife                  05 - Cargo/Equipment Loss or Shift                  06 - Equipment Failure                  12 - Fell/Jumped from a motor vehicle                  13 - Thrown or Falling Object                  16 - Carbon Monoxide (CO) Poisoning                  17 - Injuries by being thrown against part of the vehicle                  18 - Other Non-Collision (Motorcycle Loss of Control)</p> <p><u>Collision w/ Person, MV, or Non-Fixed Object:</u>                  19 - Pedestrian                  20 - Pedacycle                  21 - Railway Vehicle                  22 - Motor Vehicle in Transport on Roadway                  23 - Motor Vehicle on OTHER Roadway                  24 - Parked Motor Vehicle                  26 - Other NON-Fixed Object                  27 - Work Zone/Maintenance Equipment                  28 - Work Zone Channeling Device                  29 - Object Set in Motion by Another Vehicle (Single Vehicle Crash)</p> <p><u>Animals:</u>                  30 - Horse                  31 - Cow                  32 - Pig                  33 - Sheep                  34 - Other Domestic (Dog, Llama, etc)                  35 - Elk                  36 - Deer                  37 - Moose                  38 - Antelope                  39 - Buffalo                  40 - Other Wild (Bear, Coyote, Eagle)</p> <p><u>Collision w/ Fixed Object</u>                  41 - Guardrail End                  42 - Guardrail Face                  43 - Impact Attenuator/Crash Cushion                  44 - Bridge Pier or Support                  45 - Bridge Overhead Structure                  46 - Bridge Rail                  47 - Concrete Traffic Barrier/Jersey Barrier                  48 - Other Traffic Barrier (Includes temporary)                  49 - Utility Pole/Light Support                  50 - Traffic Signal Support                  51 - Traffic Sign Support                  52 - Overhead Traffic Sign                  53 - Sign Support Single Post                  54 - Sign Support Multiple Post                  55 - Other Traffic Sign Support                  56 - Barricade                  57 - Tree/Shrubbery                  58 - Cut Slope                  59 - Road Approach                  60 - Rock, Boulder, Rock Slide                  61 - End of Drainage Pipe/Structure/Culvert                  62 - Building or Other Structure Wall                  63 - Fence (Including Post)                  64 - Raised Median or Curb                  65 - Delineator Post                  66 - Earth Embankment/Berm                  67 - Ditch                  68 - Snow Embankment                  69 - Mail Box                  70 - Tunnel                  71 - Cattle Guard                  72 - Fixed Object Other                  73 - Cable Barrier                  99 - Unknown</p>	<p><b>Location of FHE</b> <input type="text"/></p> 01 - On Roadway 02 - Off Roadway 03 - Shoulder 04 - Median 05 - On OTHER Roadway 06 - Outside of ROW 07 - Gore 08 - Separator 09 - In Parking Lane/Zone 10 - Tunnel 11 - Bridge 12 - Port of Entry 13 - Rest Area 99 - Unknown <p><b>Road Circumstance</b> <input type="text"/>                  choose up to 3                  1st choice <input type="text"/>                  2nd choice <input type="text"/>                  3rd choice <input type="text"/></p> 01 - None 02 - Road Surface Condition 03 - Debris, loose material on the surface 04 - Ruts, Holes, Bumps 05 - Work Zone/Construction Zone 06 - Worn or Polished Surface 07 - Obstruction in Roadway 08 - Traffic Control Device Missing 09 - Traffic Control Device Inoperative 10 - Traffic Control Device Obscured 11 - Shoulders (None, Low, Soft, High) 12 - Non- Highway Work 13 - Reduced Road Width 14 - Lane Markings Missing or Faded 15 - Obstructed by a Previous Crash 16 - Other 99 - Unknown <p><b>Work Zone Related</b> <input type="text"/>                  01 - Yes 02 - No 99 - Unknown</p> <p><b>Work Zone Workers Present</b> <input type="text"/></p> <p><b>Work Zone Location</b> <input type="text"/>                  01 - Before the First Warning Sign                  02 - Advance Warning Area                  03 - Transition Area                  04 - Activity Area                  05 - Termination Area                  99 - Unknown</p> <p><b>Type of Work Zone</b> <input type="text"/>                  01 - Lane Closure                  02 - Lane Shift or Crossover                  03 - Work on Shoulder/Median                  04 - Intermittent or Moving Work                  05 - Other                  99 - Unknown</p> <p><b>Manner of Collision</b> <input type="text"/>                  *see diagram right</p> 01 - Rear End (Front to Rear) 02 - Head On (Front to Front) 03 - Angle Same Direction (Front to Side) 04 - Angle (Front-to-Side), Opposing Direction 05 - Angle Right (Front to Side, includes Broadside) 06 - Angle Direction not Specified 07 - Sideswipe Same Direction (Passing) 08 - Sideswipe Opposite Direction (Meeting) 09 - Rear to Side (Normally Backing) 10 - Rear to Rear (Normally Backing) 11 - Rear to Front (Normally Backing) 12 - Not a Collision w/2 Vehicles in Transport 13 - Other 99 - Unknown <p><b>Direction of Force</b> <input type="text"/>                  01 - Opposing (Opposite Direction within 15 degrees)                  02 - Angle (force exceeds 15 degrees)                  03 - Same (same direction within 15 degrees)                  04 - Meeting (glancing collision from opposite direction)                  05 - Passing (glancing collision from same direction)                  99 - Unknown</p>	<p><b>Weather</b> <input type="text"/>                  1st choice <input type="text"/>                  2nd choice <input type="text"/></p> 01 - Clear 02 - Raining 03 - Snowing 04 - Fog 05 - Blowing Dust/Sand/Dirt 06 - Severe Wind Only 07 - Blizzard 08 - Sleet/Hail/Freezing Rain 09 - Blowing Snow 10 - Cloudy,Overcast 11 - Smoke 12 - Other 99 - Unknown <p><b>Road</b> <input type="text"/>                  1st choice <input type="text"/>                  2nd choice <input type="text"/></p> 01 - Dry 02 - Wet 03 - Ice/Frost 04 - Snow 05 - Mud/Dirt/Gravel 06 - Slush 07 - Oil/Fuel 08 - Sand on Dry Pavement 09 - Sand on Icy Road 10 - Water standing/Running 11 - Other 99 - Unknown <p><b>Environmental Circumstance</b> <input type="text"/>                  choose up to 3                  1st choice <input type="text"/>                  2nd choice <input type="text"/>                  3rd choice <input type="text"/></p> 11 - None 01 - Weather Conditions 02 - Visual Obstruction Buildings 03 - Visual Obstruction Other Vehicle 04 - Visual Obstruction Vegetation 05 - Visual Obstruction Hillcrest 06 - Visual Obstruction Embankment-Snow, Rock,etc 07 - Other Physical Obstruction 08 - Glare (Sun or Headlight) 09 - Animals in Roadway 10 - Other 99 - Unknown <p><b>Relation to Junction</b> <input type="text"/>  <u>Non-Interstate</u>                  01 - Non-Junction                  02 - Intersection                  03 - Intersection Related                  04 - Driveway Related                  05 - Entrance/Exit Ramp                  06 - Railway Grade Crossing                  07 - Crossover Related                  08 - Business Entrance                  09 - Alley                  10 - Other Non-Interchange (ie. Bike, Snowmobile Trail, School Xing)                  11 - Private Road Junction                  99 - Unknown (describe in narrative)</p> <p><b>Type of Intersection</b> <input type="text"/>                  01 - Not an Intersection                  02 - Four (4) -Way Intersection                  03 - T Intersection                  04 - Y Intersection                  05 - Five (5) Point or more                  06 - Intersection as part of an Interchange                  07 - Roundabout                  08 - L Intersection                  09 - Diverging Diamond                  99 - Unknown</p>	<p><b>Lighting</b> <input type="text"/></p> 01 - Daylight 02 - Darkness Unlighted 03 - Darkness Lighted 04 - Dawn 05 - Dusk 06 - Other 99 - Unknown <p><b>School Bus Related</b> <input type="text"/>                  01 - No                  02 - Yes, Directly Involved                  03 - Yes, Indirectly Involved</p>
--	---	---	--

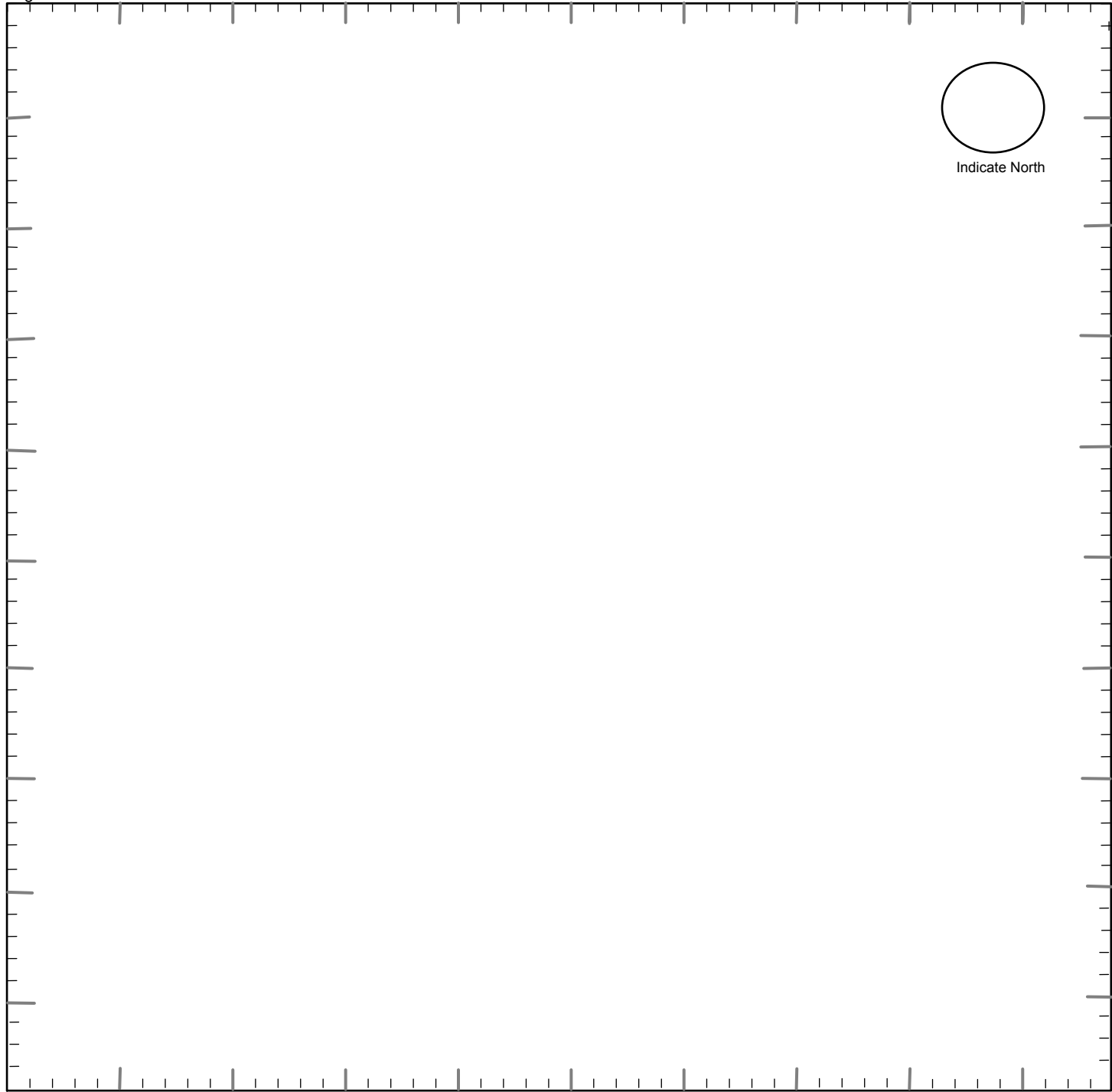


**Manner of Collision CLARIFICATION**

01 - Rear End (Front-to-Rear)  
 02 - Head-on (Front-to-Front)  
 03 - Angle (Front-to-Side), Same Direction  
 04 - Angle (Front-to-Side), Opposing Direction  
 05 - Angle (Front-to-Side), Right Angle/Broadside



Indicate North



Witnesses

1st

First Name MI Last Name

Street Number Street Name City: State: Zip Code

Home Work Cell Phone and/or Home Work Cell Phone

2nd

First Name MI Last Name

Street Number Street Name City: State: Zip Code

Home Work Cell Phone and/or Home Work Cell Phone

3rd

First Name MI Last Name

Street Number Street Name City: State: Zip Code

Home Work Cell Phone and/or Home Work Cell Phone





WYOMING DEPARTMENT OF  
TRANSPORTATION  
HIGHWAY SAFETY PROGRAM  
5300 BISHOP BLVD  
CHEYENNE, WY 82009-3340

**HIGHWAY SAFETY**



**Program**

