

## **Proposed Coverage Enhancement Site in Lander WY**

The proposed Coverage Enhancement Site at Sands Hill, 2 Mi E of Highway 287, 5 Mi north of Lander, WY gives very good portable coverage of Lander and the surrounding area.

### **Coverage from existing conventional system**

Figure 1 shows the coverage from the existing conventional system located at Lander. This is an estimate of the coverage and makes allowances for in building coverage with the radio worn on the hip.

### **Coverage from existing WyoLink sites**

Figure 2 shows that coverage from existing WyoLink sites surrounding Lander is inadequate. The orange shaded areas show in building coverage from a portable radio worn on the hip using a speaker microphone. The yellow shaded areas show a lack of coverage from a portable radio worn on the hip using a speaker microphone.

### **Coverage from this new WyoLink site**

Figure 3 shows that coverage from the proposed new WyoLink site is excellent. The orange shaded areas show in building coverage from a portable radio worn on the hip using a speaker microphone. The yellow shaded areas show a lack of coverage from a portable radio worn on the hip using a speaker microphone.

### **Areas projected to lack coverage**

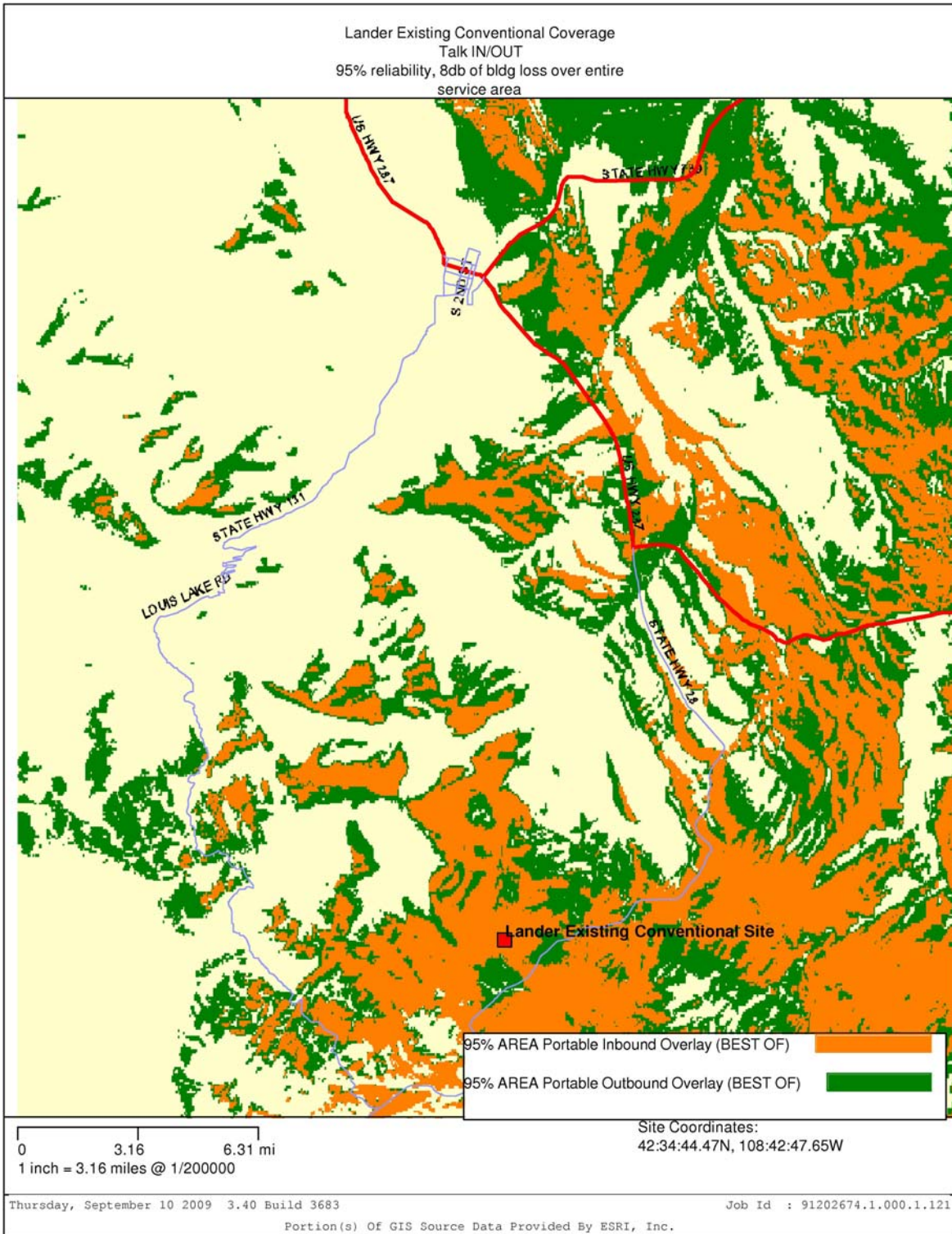
There are very few areas projected to lack in-building coverage from a portable radio worn on the hip using a speaker microphone. The few areas that are predicted to be lacking in coverage would more than likely gain coverage if the radio was removed from the hip and held at face level. Projected low level coverage from the proposed site is vastly superior to the existing coverage from the coverage model.

### **Recommendation**

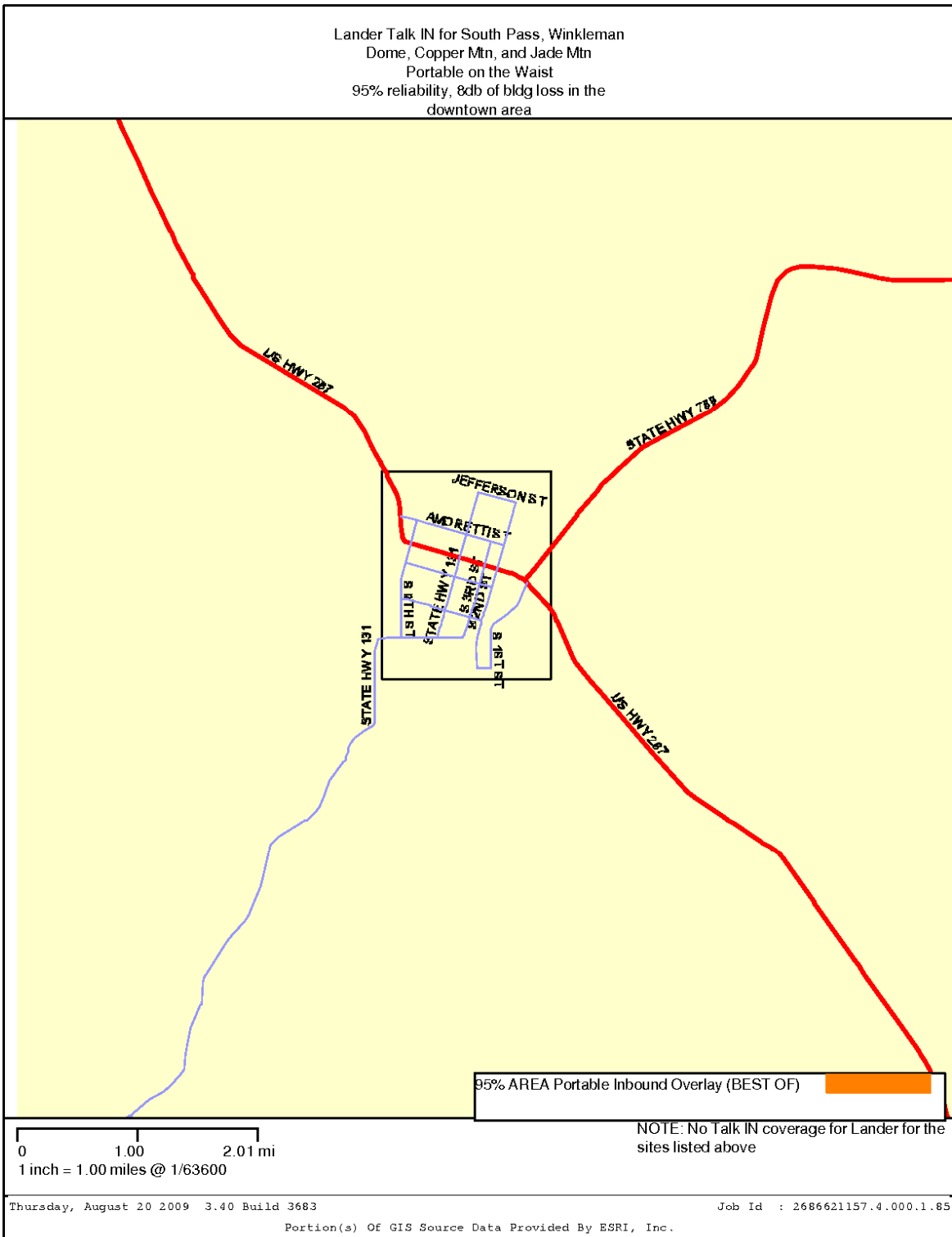
Therefore, it is my recommendation that the city of Lander, The PSCC, WyoLink and Motorola proceed with constructing a coverage enhancement site at Sands Hill, 2 Mi E of Highway 287, 5 Mi north of Lander, WY.

### **Other sites considered**

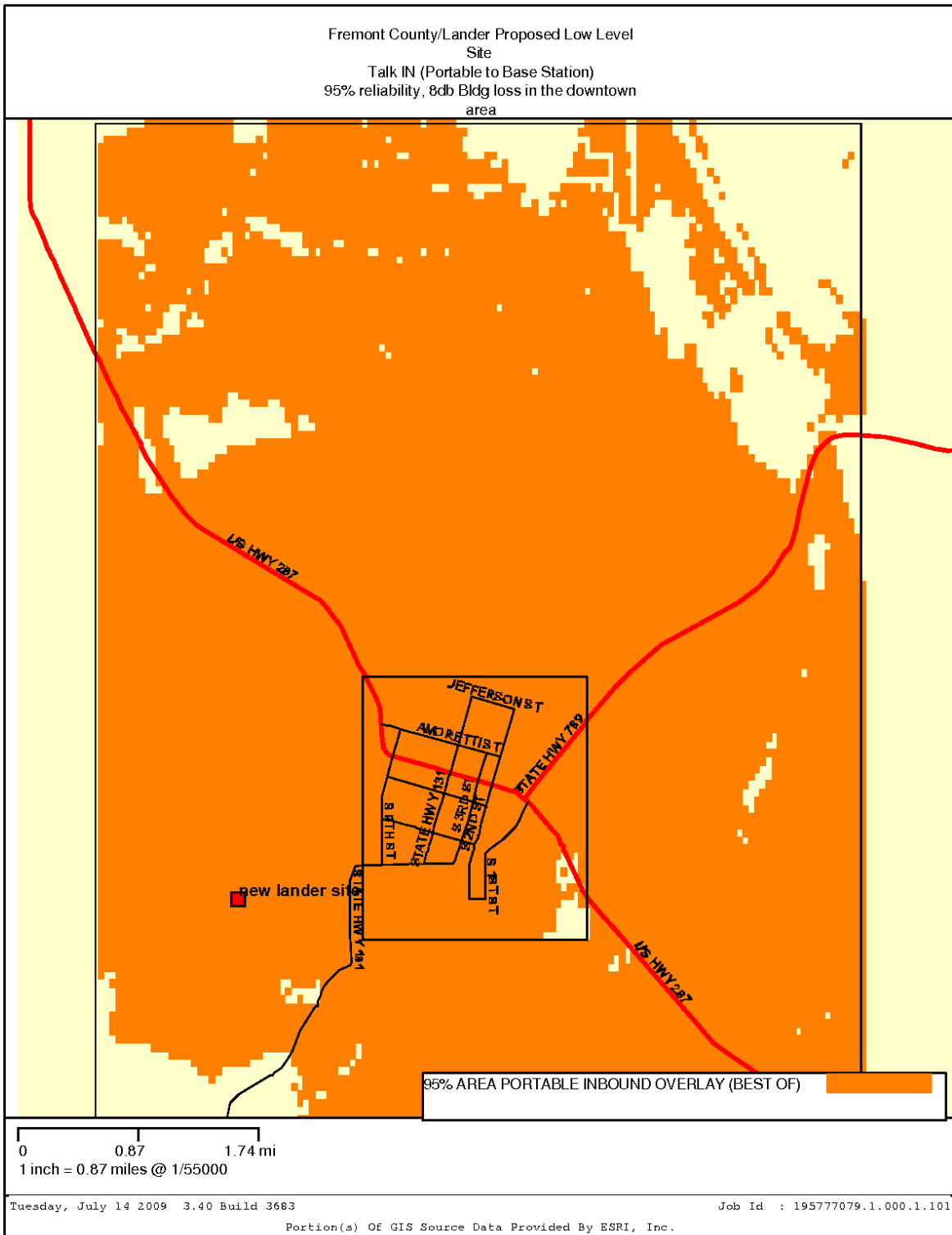
Several sites were considered at Lander, including one 5.3 miles north of Lander that currently has frequencies licensed. None of these sites gave coverage comparable to the site at Sands Hill.



**Figure 1:** Existing In Building Portable on the Hip Coverage from the Conventional System



**Figure 2:** In Building Portable on the Hip Coverage from Existing WyoLink Core Sites



**Figure 3:** In Building Portable on the Hip Coverage from Proposed WyoLink Low Level Site