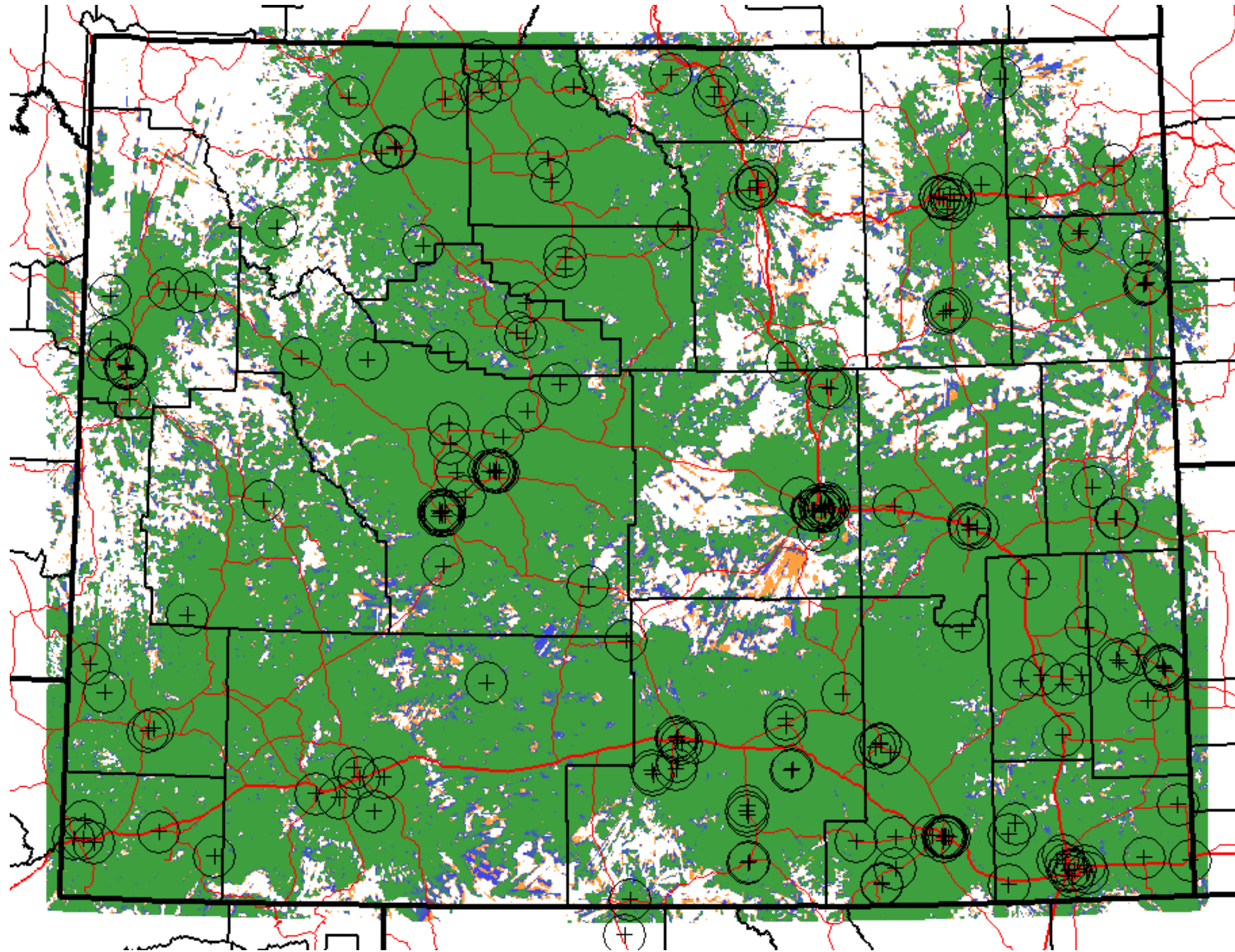


**Mobile Talk-In
Local Government
Exhibit 12**



EDX SignalPro™: local

Sites

- State Boundaries
- County Boundaries
- Highways
- Interstates

Notes

Green: greater than -93.1dBm (DAQ 4 or better)
 Blue: -93.2dBm to -100.1dBm (DAQ 3.4 to DAQ 4)
 Orange: -100.2dBm to -103.1dBm (DAQ 3 to DAQ 3.4)
 White: less than -103.2dBm (less than DAQ 3)
 10.2 dB of margin included to provide 95% tile reliability

MILES

-25 0 25

Wyoming Radio Coverage
 Local Government Radio Systems
 Faded Performance 95% Area Reliability Mobile Talk-In Coverage