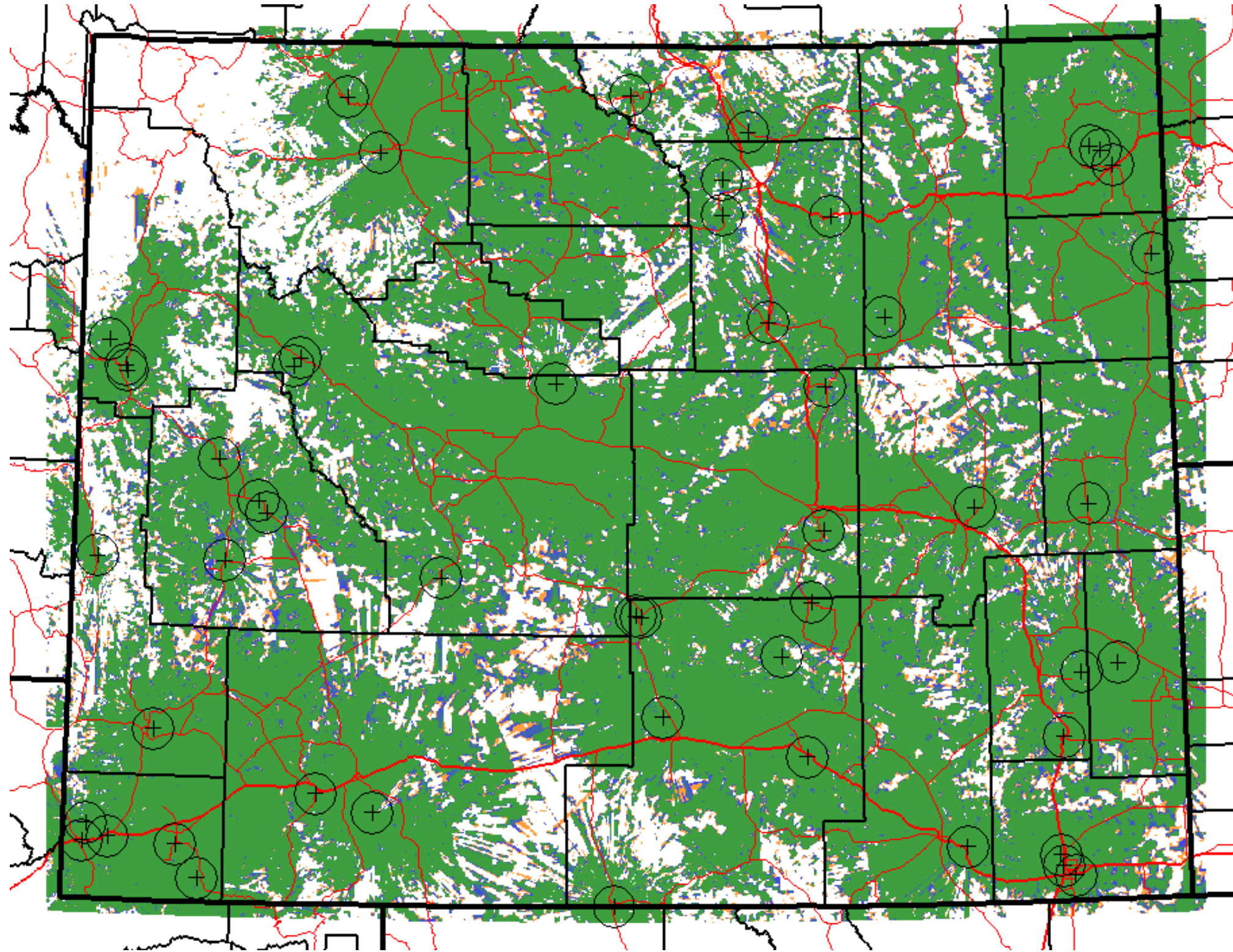


**Mobile Talk-Out  
Road & Bridge  
Exhibit 17**



EDX SignalPro™: RandB2

---

Sites

- State Boundaries
- County Boundaries
- Highways
- Interstates

---

Notes

Green: greater than -93.1dBm (DAQ 4 or better)  
 Blue: -93.2dBm to -100.1dBm (DAQ 3.4 to DAQ 4)  
 Orange: -100.2dBm to -103.1dBm (DAQ 3 to DAQ 3.4)  
 White: less than -103.2dBm (less than DAQ 3)  
 10.2 dB of margin included to provide 95% tile reliability

---

MILES

-25      0      25

---

**Wyoming Radio Coverage**

**Road and Bridge Radio Systems**

Faded Performance 95% Area Reliability Mobile Talk-Out Coverage