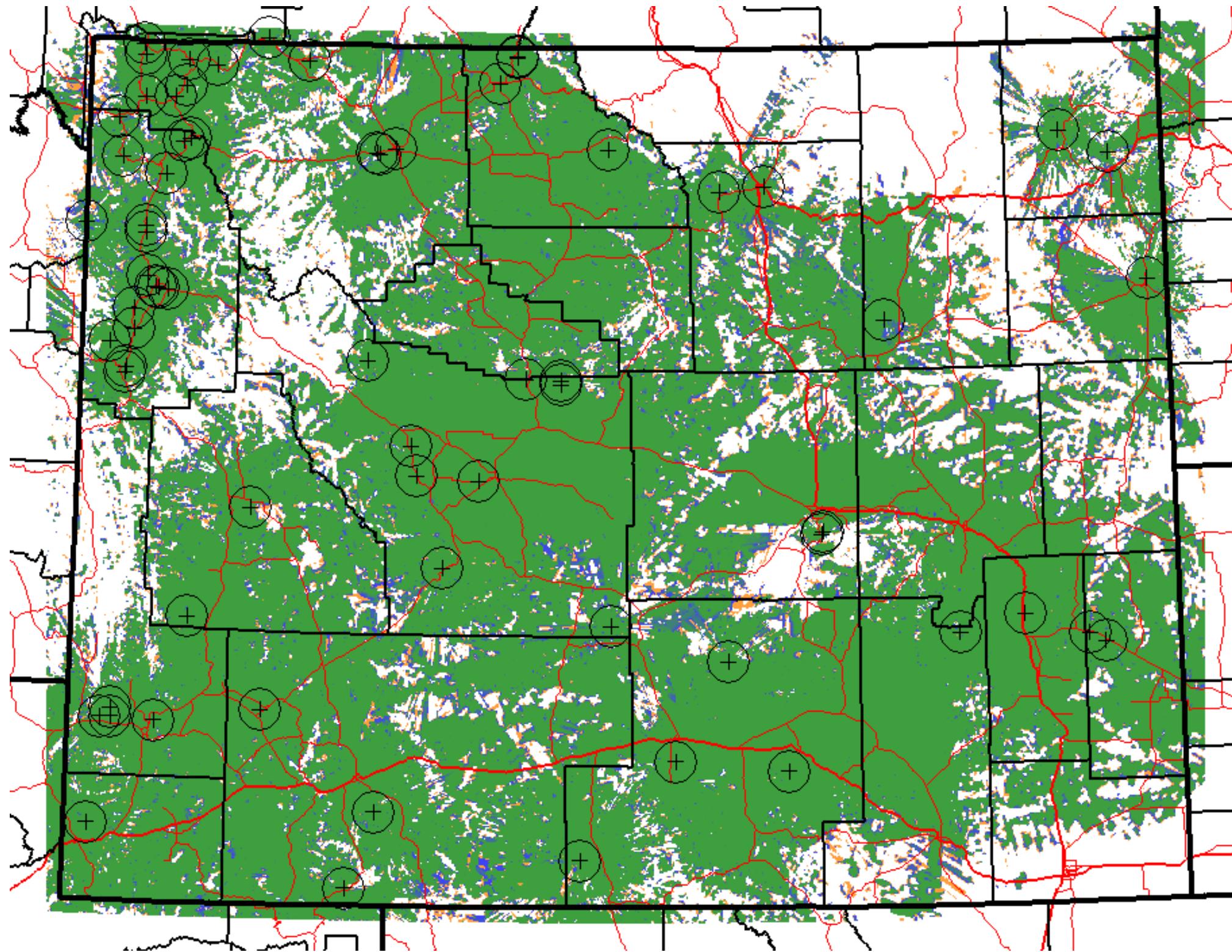


**Mobile Talk-In
BLM and DOI
Exhibit 18**



EDX SignalPro™: blmIN

Sites

- State Boundaries
- County Boundaries
- Highways
- Interstates

Notes

Green: greater than -96.0dBm (DAQ 4 or better)
 Blue: -96.1 dBm to -103.0dBm (DAQ 3.4 to DAQ 4)
 Orange: -103.1 dBm to -106.0dBm (DAQ 3 to DAQ 3.4)
 White: less than -106.1 dBm (less than DAQ 3)
 10.2 dB of margin included to provide 95% tile reliability

MILES

-25 0 25

Wyoming Radio Coverage

BLM and DOI Radio Systems

Faded Performance 95% Area Reliability Mobile Talk-In Coverage