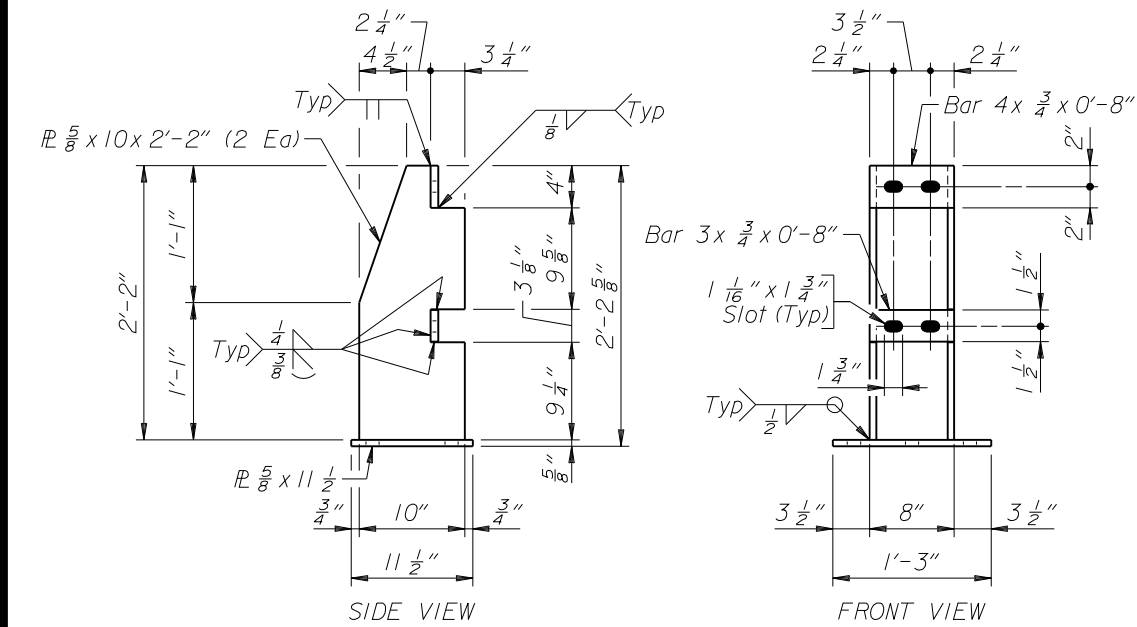


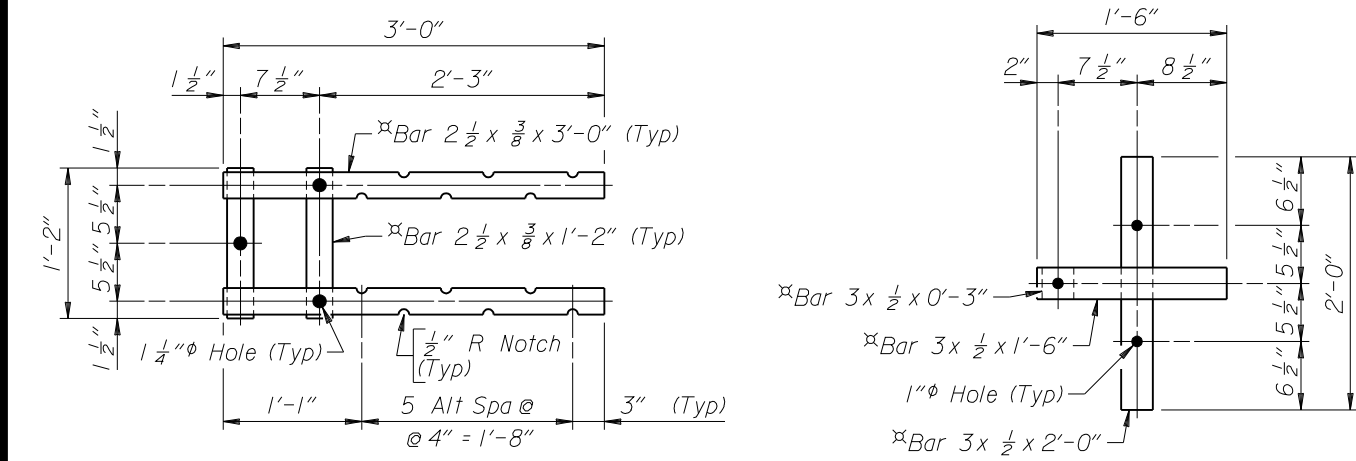
ASSEMBLY DETAIL

(Shown near & Post)
 (Bridge slab shown, approach slab similar)



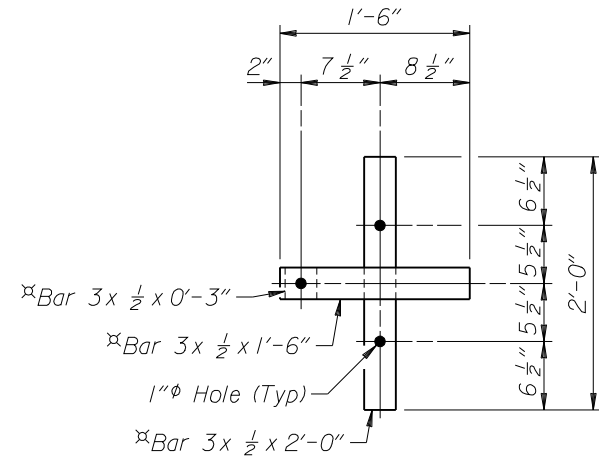
POST DETAILS

(See View A-A for anchor bolt hole spacing)



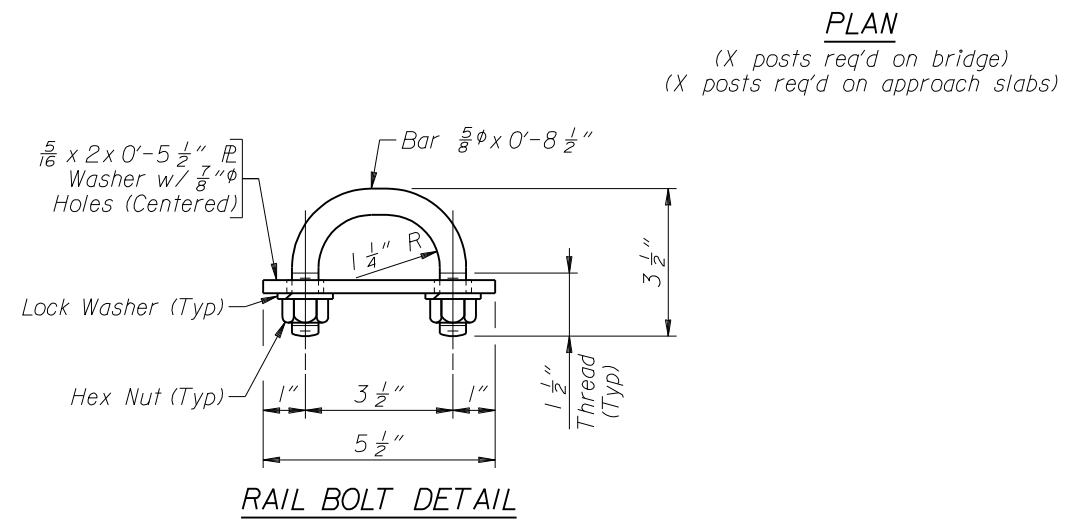
SECTION B-B

(Showing upper anchorage)
 (Anchor bolts and slab not shown)



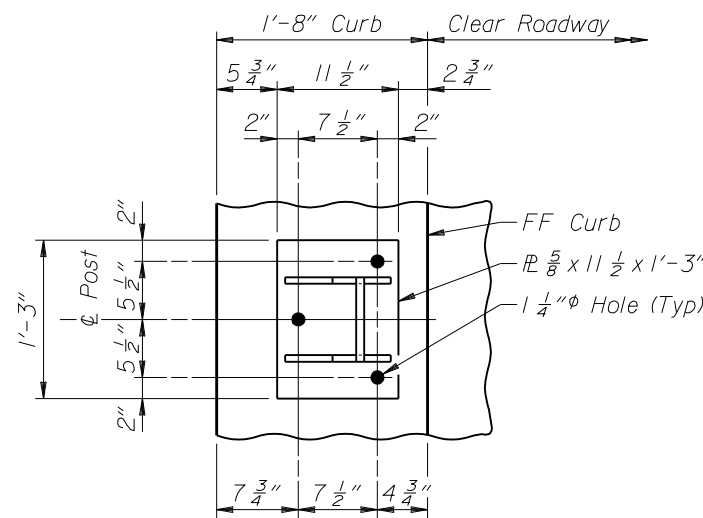
SECTION B-B

(Showing lower anchorage)
 (Anchor bolts and slab not shown)



PLAN

(X posts req'd on bridge)
 (X posts req'd on approach slabs)



VIEW A-A

(Anchor bolts, rails, and rail bolts not shown)

- Note:**
- 1) Ensure the expansion splice is located in the railing panel which passes over the bridge expansion joint as indicated on the plan.
 - 2) Anchor bolts may be tack welded to lower anchorage (Shop or field).
 - 3) At post locations, drill two 1 1/8" holes in the rails to receive rail bolts (Shop or field). See Post Details for hole spacing.
 - 4) Before installing rails, paint all cut, drilled, or otherwise damaged surface areas of the railing components with two coats of zinc rich paint conforming to the requirements of ASTM A 780.
 - 5) After installing the rails, paint all exposed bolt threads with two coats of zinc rich paint conforming to the requirements of ASTM A 780.

WYOMING DEPARTMENT OF TRANSPORTATION BRIDGE PROGRAM			
REVISIONS		BRIDGE RAILING DETAILS	
		TL4_br1.dgn	
APPROVED	DESIGN	Design Section X	
DATE	DETAIL	Drwg.No. X Sheet X of X	
	D'S.		