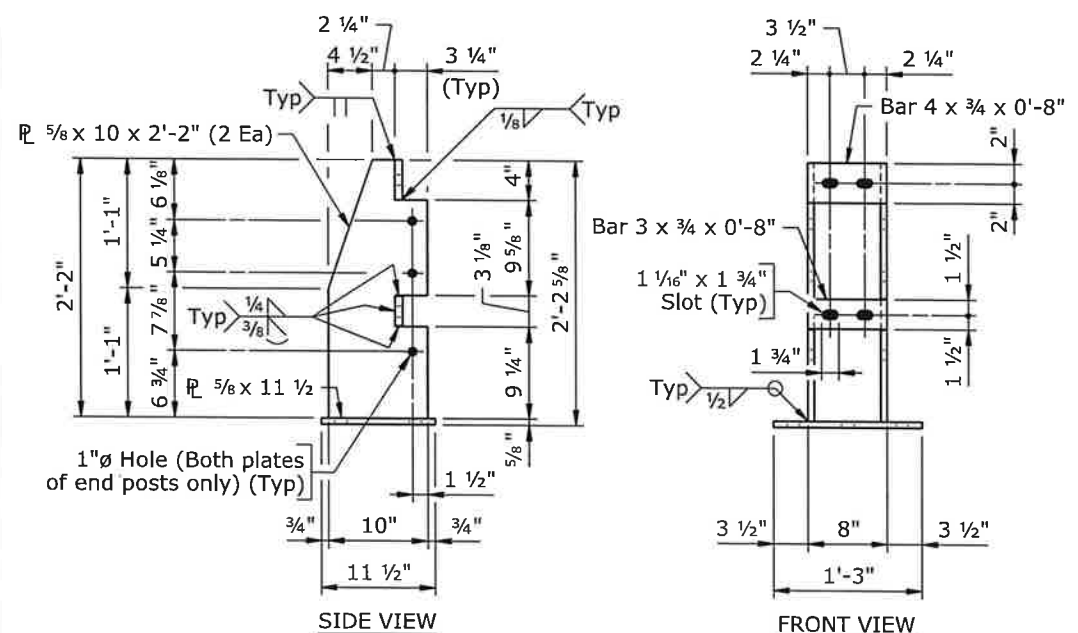
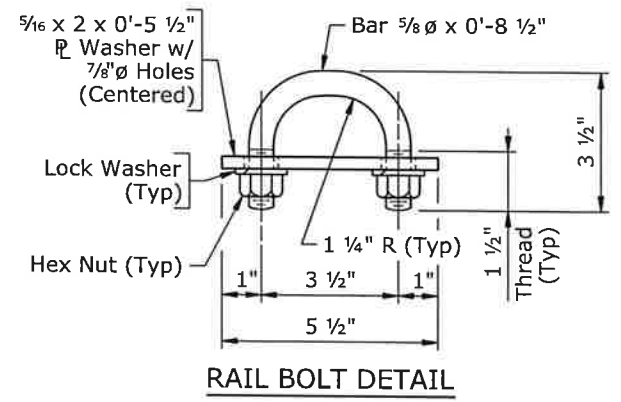


ANCHOR BOLT TABLE	
Location	Anchor Bolt
Bridge Slab	7/8" $\phi$ x 1'-3"
Approach Slab	7/8" $\phi$ x 1'-6"

**ASSEMBLY DETAIL**  
 (Shown near  $\phi$  Post)  
 (Bridge slab shown, approach slab similar)

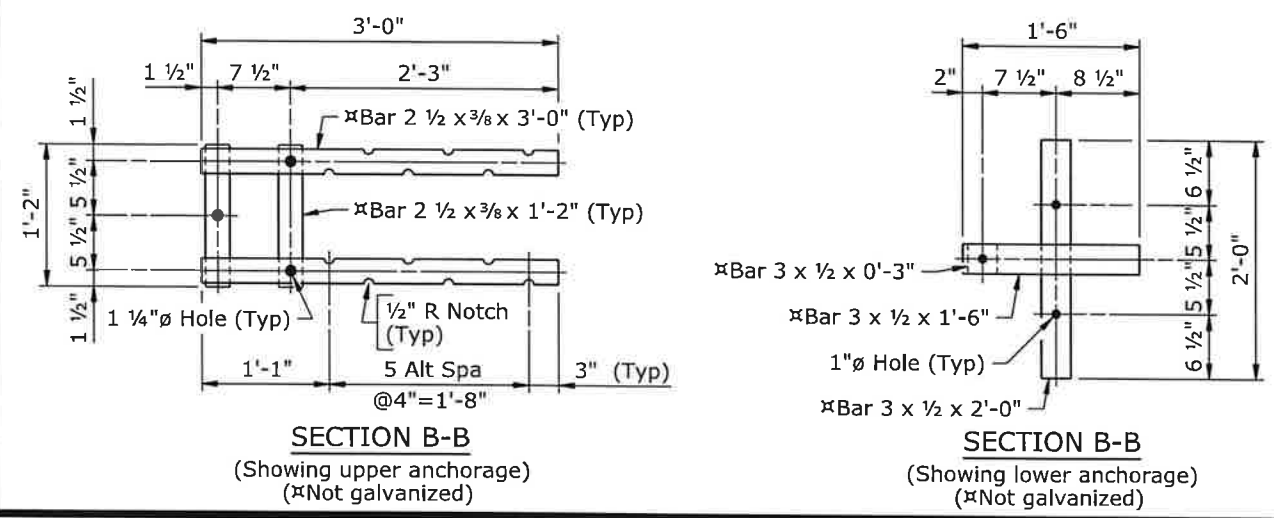


**POST DETAILS**  
 (See View A-A for anchor bolt hole spacing)



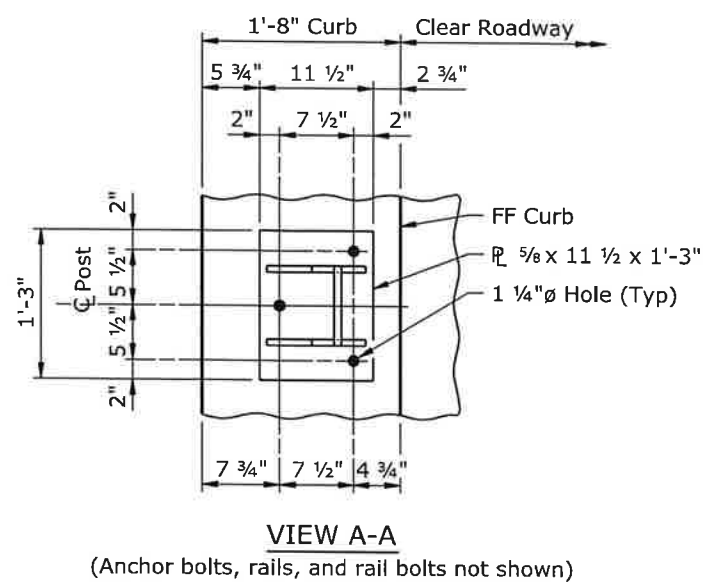
**RAIL BOLT DETAIL**

**PLAN**  
 (X posts req'd on bridge)  
 (X posts req'd on approach slabs)



**SECTION B-B**  
 (Showing upper anchorage)  
 (Not galvanized)

**SECTION B-B**  
 (Showing lower anchorage)  
 (Not galvanized)

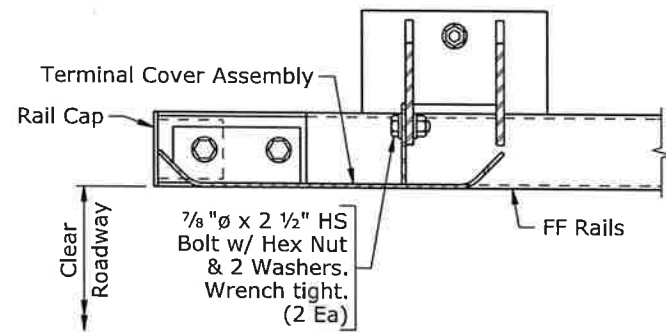


**VIEW A-A**  
 (Anchor bolts, rails, and rail bolts not shown)

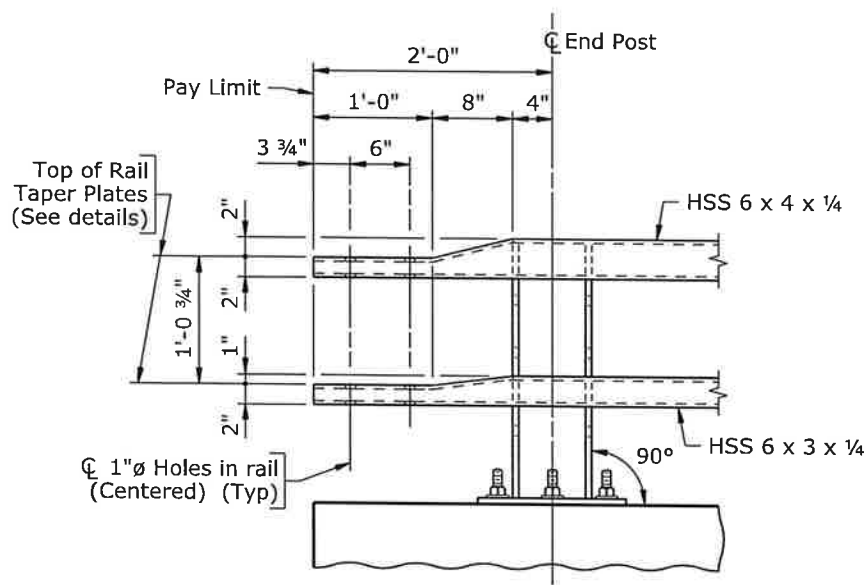
- Note:**
- 1) Ensure the expansion splice is located in the railing panel which passes over the bridge expansion joint as indicated on the plan.
  - 2) Anchor bolts may be tack welded to lower anchorage (Shop or field).
  - 3) At post locations, drill two 1 1/16"  $\phi$  holes in each rail to receive rail bolts (Shop or field). See Post Details for hole spacing.
  - 4) Paint surfaces of the railing components that have been cut, drilled, or otherwise damaged with two coats of zinc-rich paint conforming to ASTM A 780.
  - 5) After installing rails, paint all exposed bolt threads with two coats of zinc-rich paint conforming to ASTM A 780.

WYOMING DEPARTMENT OF TRANSPORTATION BRIDGE PROGRAM			
BRIDGE RAILING DETAILS			
TL4BRGRAIL_NCHRP350_br1.dgn			
REVISIONS	DESIGN	DETAIL	QTY'S
	X	X	X
DESIGN	DESIGN SECTION	DRWG NO.	SHEET
	X	X	X of X

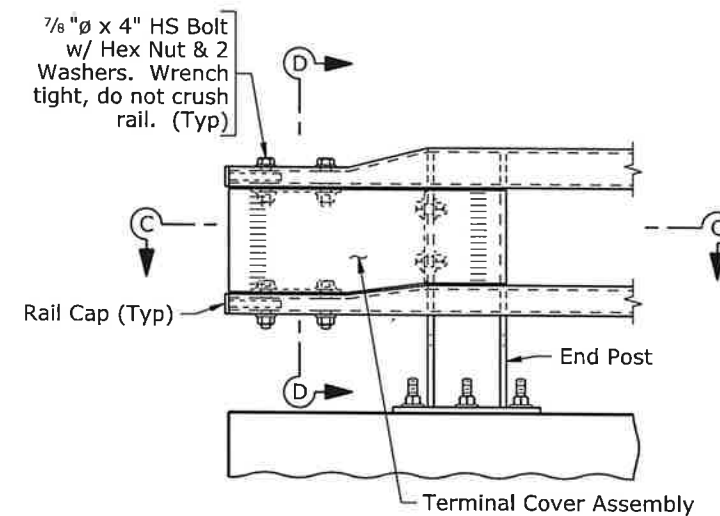
TERMINAL COMPONENT REQUIREMENTS		
Approach Guardrail Connection	Rail Caps Required	Terminal Cover Assembly Required
MGS Approach Guardrail	Yes (Without bolts)	≠No
Box Beam w/ Rubrail Approach Guardrail	No	No
No Approach Guardrail	Yes (With bolts)	Yes



SECTION C-C

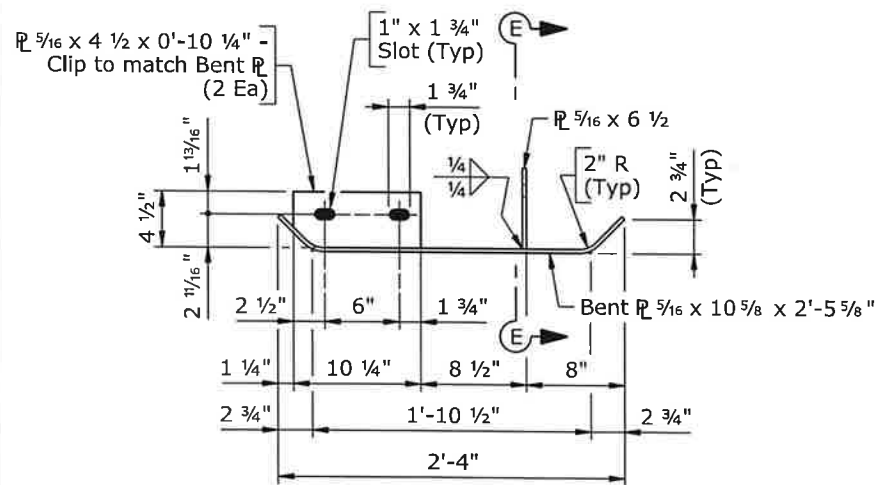


SHOWING RAILS

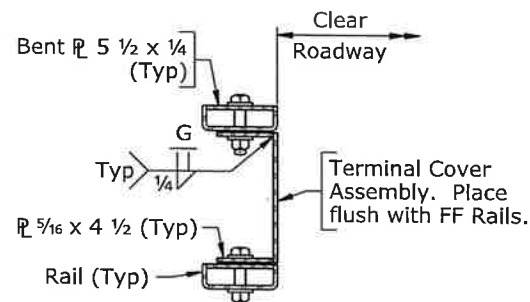


SHOWING RAIL CAPS AND TERMINAL COVER ASSEMBLY

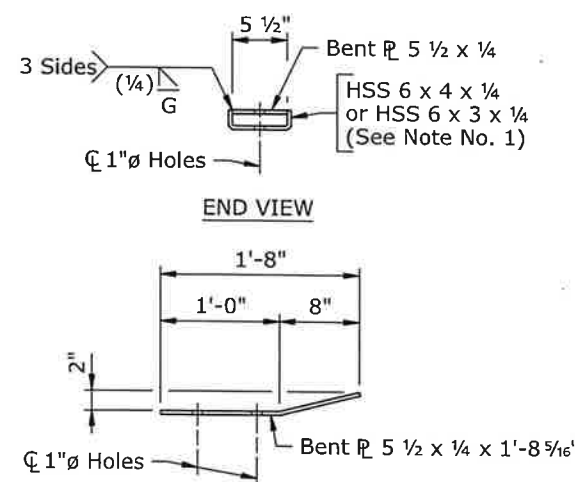
ELEVATIONS AT TERMINAL



PLAN

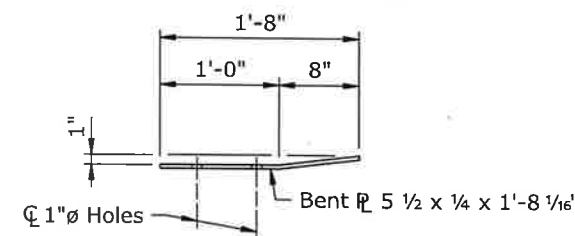


SECTION D-D



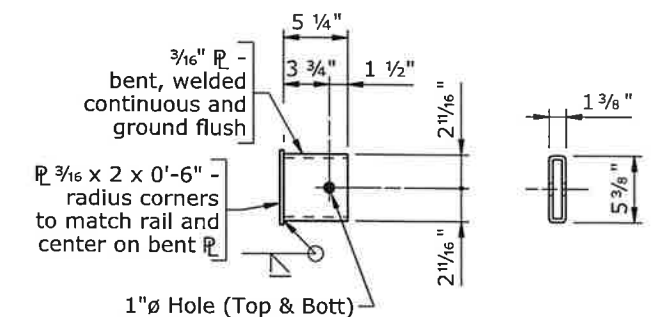
END VIEW

ELEVATION OF BENT PLATE FOR TOP RAIL (HSS 6 x 4 x 1/4 not shown)



ELEVATION OF BENT PLATE FOR BOTTOM RAIL (HSS 6 x 3 x 1/4 not shown)

RAIL TAPER PLATE DETAILS

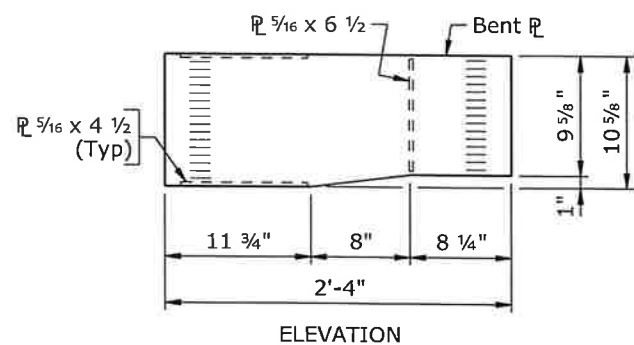


PLAN

END VIEW (R 3/16 x 2 not shown)

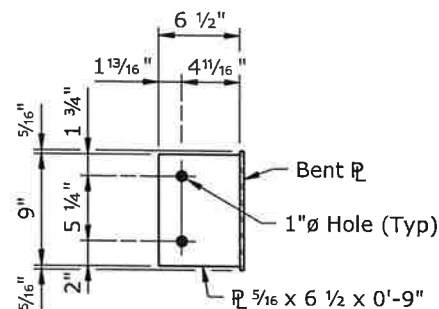
RAIL CAP DETAILS

- Note: 1) Cut top and bottom rails as required for fabrication of tapered end sections.  
 2) Installation of MGS approach guardrail will require other fabricated assemblies to be connected to end post. See road plans for details and pay item.



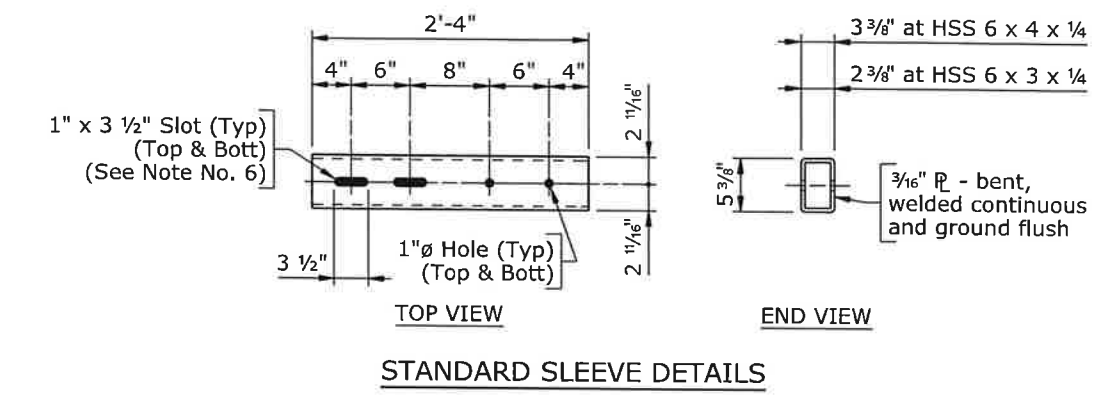
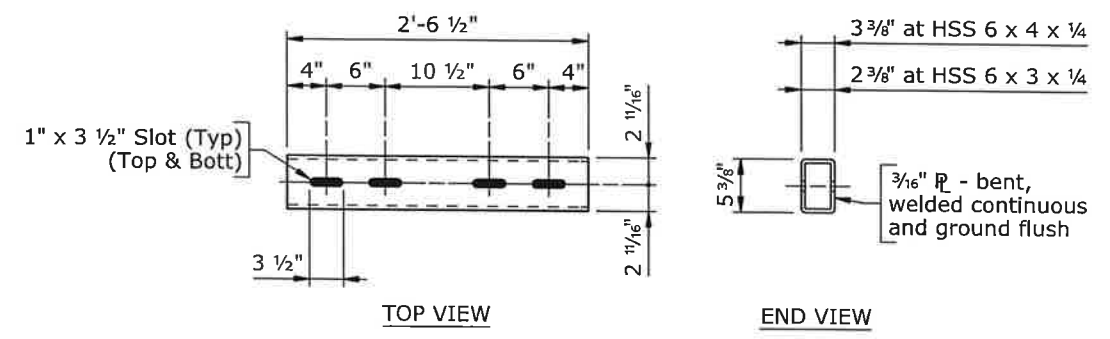
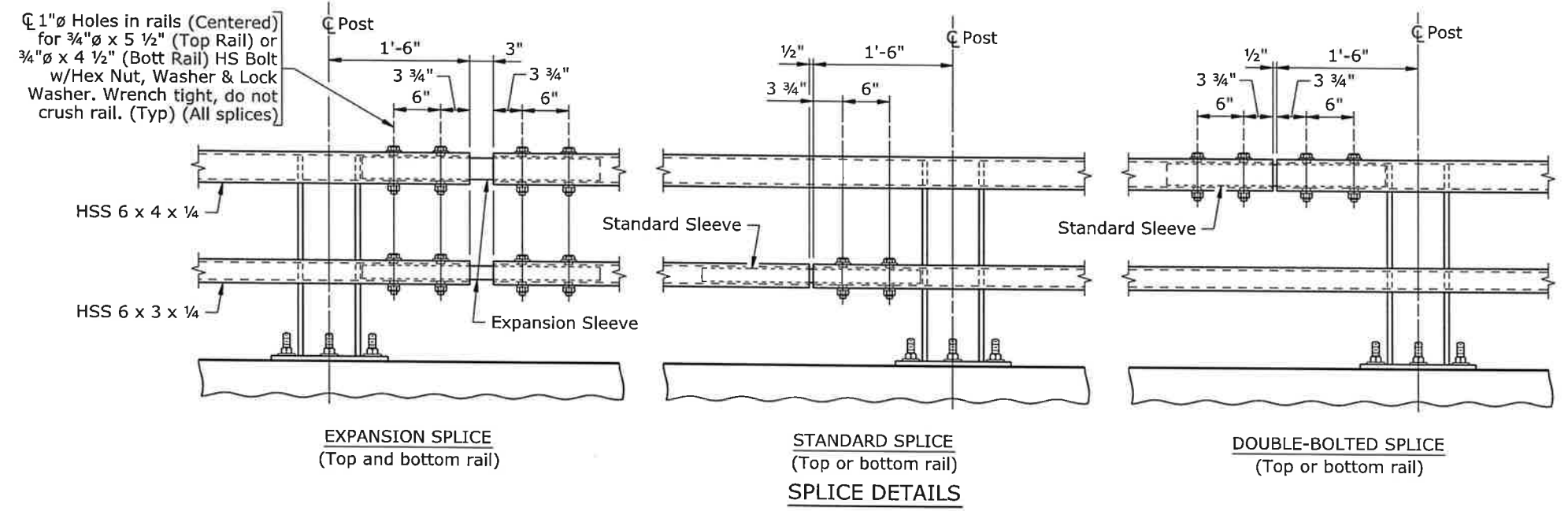
ELEVATION

TERMINAL COVER ASSEMBLY DETAILS



SECTION E-E

WYOMING DEPARTMENT OF TRANSPORTATION BRIDGE PROGRAM			
BRIDGE RAILING DETAILS			
TL4BRGRAIL_NCHRP350_br2.dgn			
REVISIONS	DESIGN	DETAIL	QTY'S
	X	X	X
REVIEW	APPROVAL	DESIGN SECTION	DRWG NO.
		X	X
		Sheet	X of X



- Note:
- 1) Ensure each rail length is continuous over a minimum of two posts.
  - 2) In rehabilitation work, ensure railing that cannot feasibly be made continuous over a minimum of two posts has a double-bolted splice.
  - 3) Splices may be located on either side of post.
  - 4) Not more than one splice is permitted per side of post, except at expansion splices.
  - 5) Do not shop splice rails.
  - 6) Slots may be omitted in standard sleeves where bolts are required on one side of splice only.

WYOMING DEPARTMENT OF TRANSPORTATION BRIDGE PROGRAM			
<b>BRIDGE RAILING DETAILS</b>			
TL4BRGRAIL_NCHRP350_br3.dgn			
REVISIONS		DESIGN	Design Section X
		DETAIL	Drwg No. X Sheet X of X
REVIEW		QTY'S	
APPROVAL			