

# WYDOT Partnerships

Building Strong Transportation Together



## 2019 Laramie County STIP Presentation

July 2019



# Meet WYDOT

## District 1 Contacts



**Tom DeHoff**  
District Engineer



**District Headquarters**  
3411 S. 3rd St.  
Laramie, WY 82070  
307-745-2100

**Lee Filer**  
Transportation  
Commissioner  
(Laramie County)



### ***District 1***



# Meet WYDOT

## District 1 Contacts



**Ralph  
Tarango**  
District  
Maintenance  
Engineer



**Tim Morton**  
District  
Construction  
Engineer



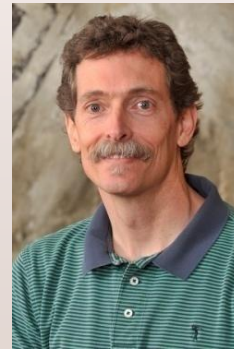
**Capt. Tom  
Stoker**  
Wyoming  
Highway  
Patrol



**Dick  
Demoney**  
District  
Equipment  
Supervisor



**Randy  
Griesbach**  
District Traffic  
Engineer



**Matt  
Murphy**  
Public  
Relations  
Specialist





# Meet WYDOT

## Laramie County



## Resident Engineers



**Kevin Erickson**



**Wayne Shenefelt**

## Maintenance



**Don Bridges**  
Area Supervisor



**Tony Avila**  
Cheyenne



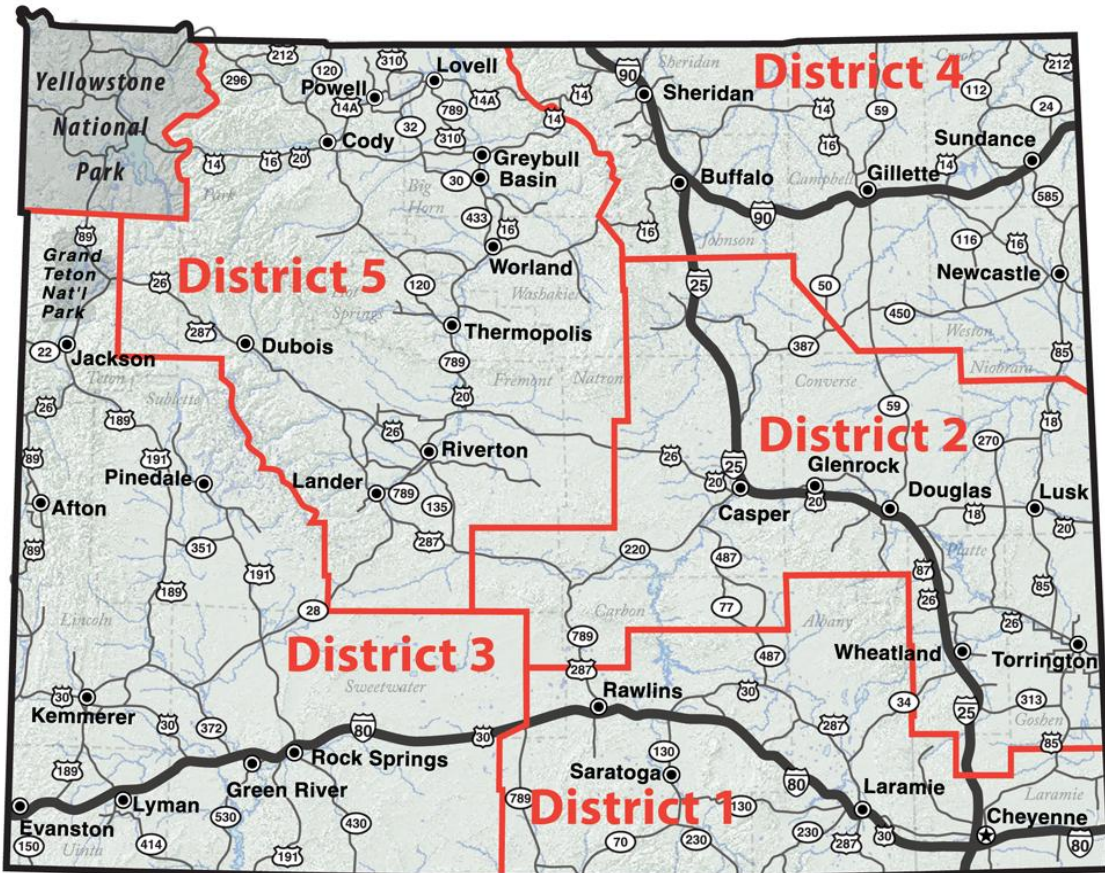
**Brian Erickson**  
Pine Bluffs



**Kraig Crawford**  
Cheyenne



# WYDOT Construction Districts



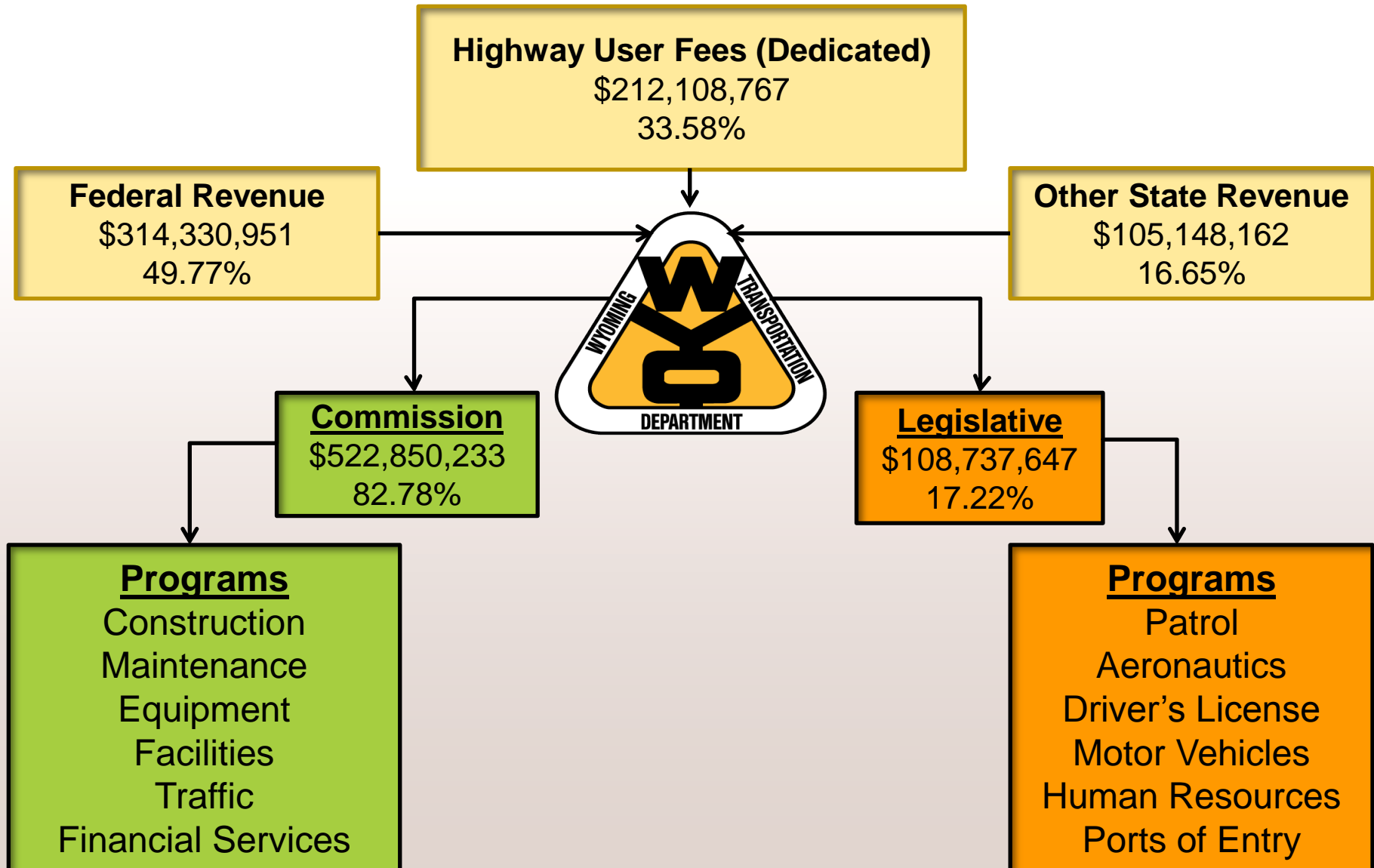
**Most of Laramie County is in District 1, including all municipalities. The remainder is in District 2.**

**District 1 also includes Albany County, most of Carbon County and a small part of Sweetwater County.**

- **Funding**
- **STIP Development and Overview**
- **District Projects**
- **Local Updates**
- **Partnership Opportunities**

# Funding

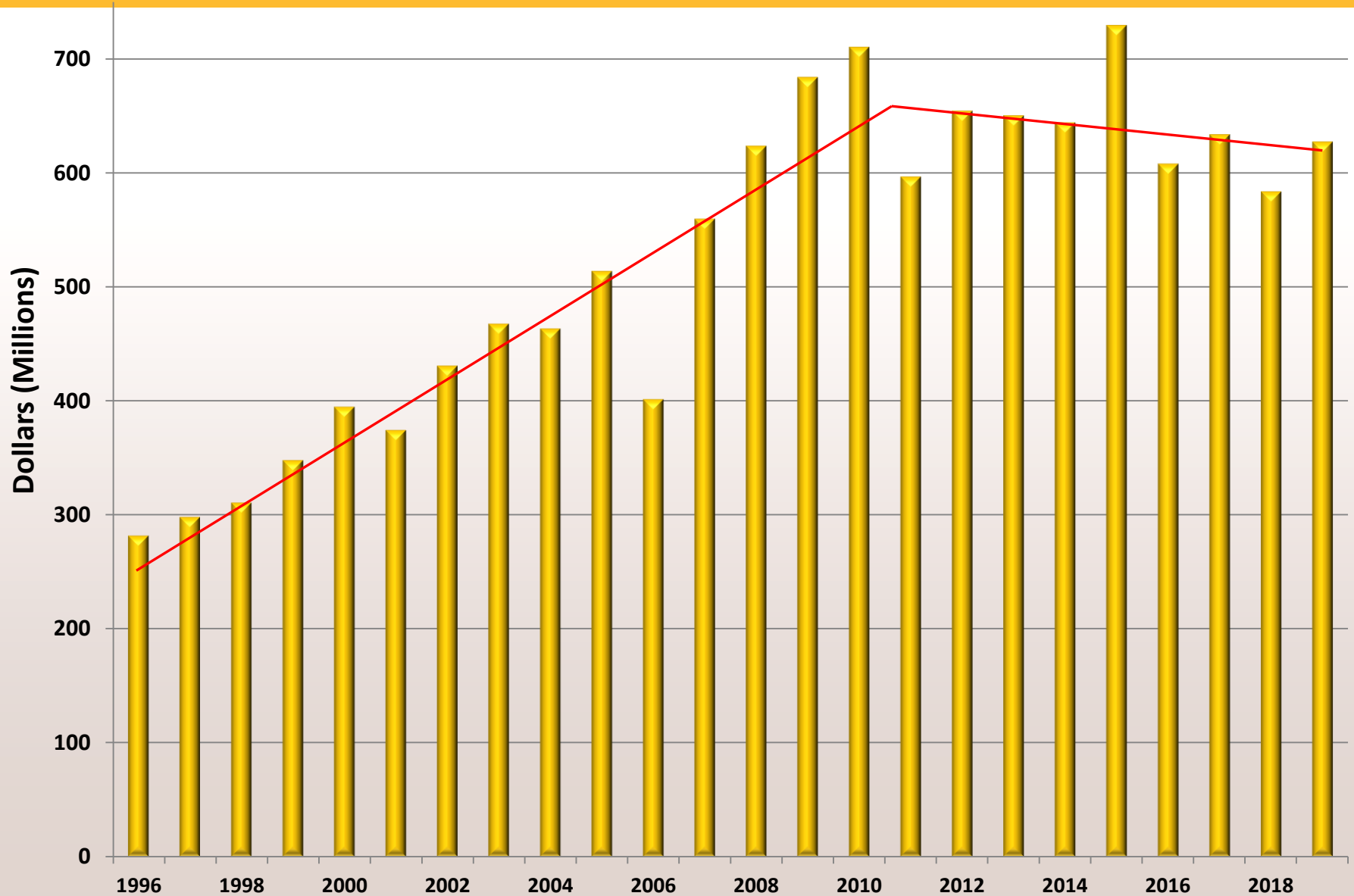
Fiscal Year 2019 - \$631,587,880





# Funding

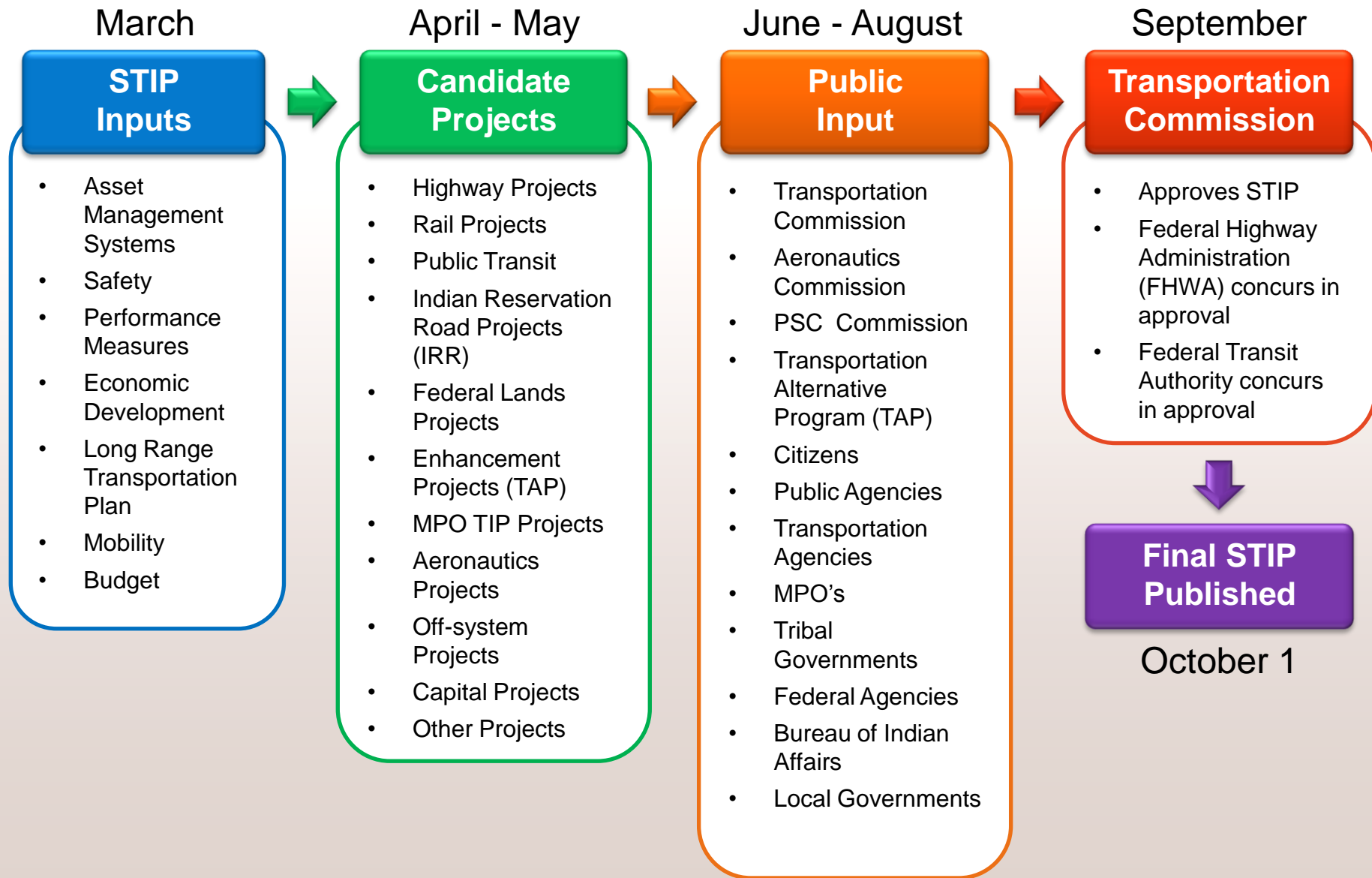
## WYDOT Revenue Trend 1996-2019



# State Transportation Improvement Program (STIP)



## Process Overview



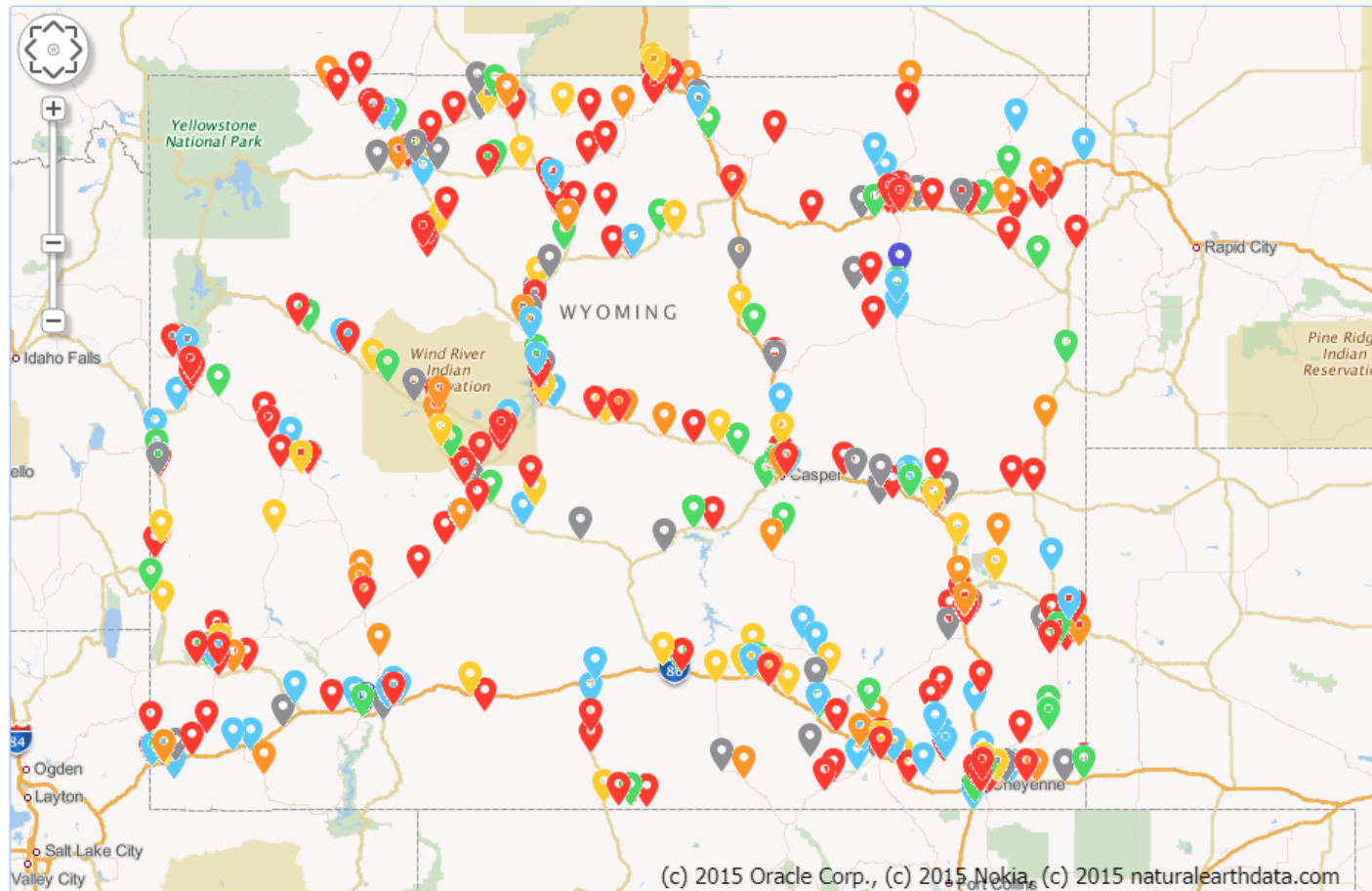
# State Transportation Improvement Program (STIP)

Project Map - <https://webapp.dot.state.wy.us/> and click 'STIP'



- State Transportation Improvement Program (STIP)
- Map
- Add A Comment
- View All Comments

Map



Legend

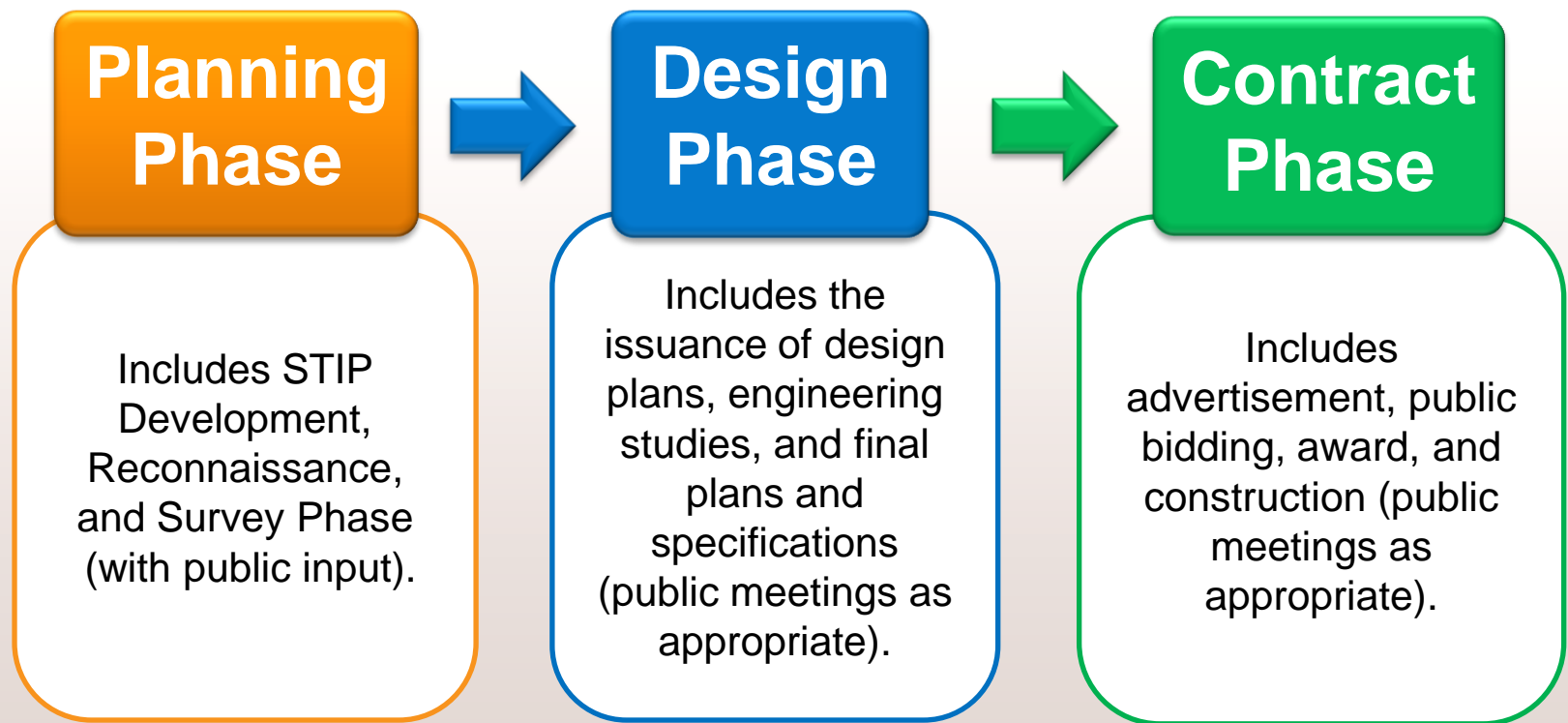
- 2019
- 2020
- 2021
- 2022
- 2023
- 2024
- 2025

(c) 2015 Oracle Corp., (c) 2015 Nokia, (c) 2015 naturalearthdata.com



# State Transportation Improvement Program (STIP)

## Highway Project Process

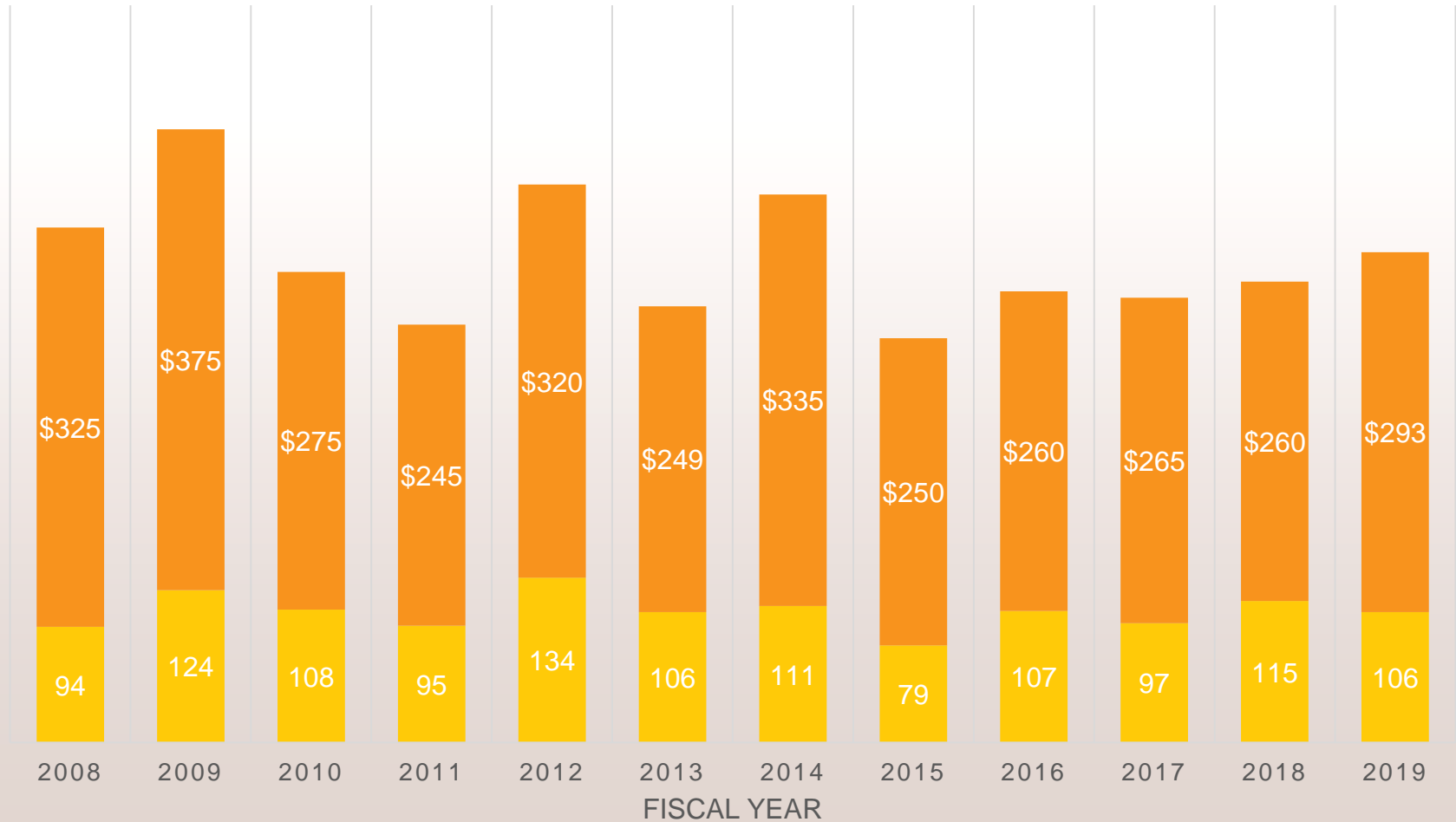


# State Transportation Improvement Program (STIP)

## Number of Projects Let & Cost Per Fiscal Year



■ Number of Projects Let    ■ Cost Per Fiscal Year (Millions)



# State Transportation Improvement Program (STIP)



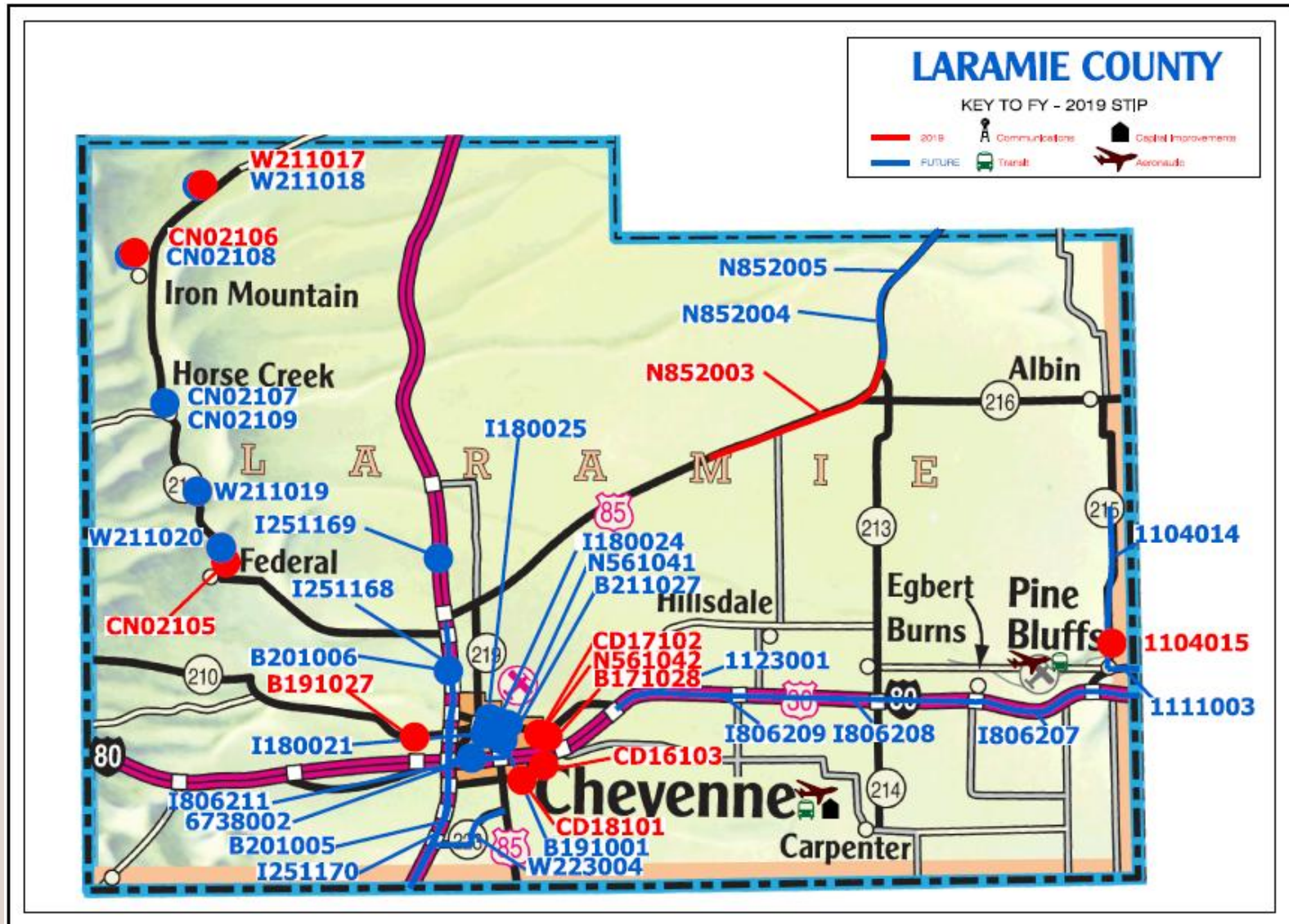
## What's in the document?

- Highway Projects – 6 year plan
- Transit Projects
- Aeronautic Projects
- Public Safety Communications Commission (PSCC) Projects
- Capital Construction Projects



# State Transportation Improvement Program (STIP)

## What's in the document?



# State Transportation Improvement Program (STIP)

## What's in the document?



Wyoming Department of Transportation  
5300 Bishop Blvd  
Cheyenne, WY 82009

### STATE TRANSPORTATION IMPROVEMENT PROJECTS ENGINEERING

#### Laramie County

#### Transportation Projects

Fiscal Year: 2020

Trans Comm Dist	Project		General Location	Detail Location	LRS ID	Begin RM	End RM	Length	Character of Work	Cost \$1000			
										Federal	State	Other	Total
1	STP-BR	B201005	TRANSPORTATION DISTRICT 1	STRUCTURE NO. DER, AAJ, CRB, ABK	25	3.29	3.29	0.00	STRUCTURE REPAIR	1,959	208	0	2,165
1	STP-BR	B201006	TRANSPORTATION DISTRICT 1	VARIOUS LOCATIONS STRUCTURE NO. MCJ, MCK, ABP, MFT, AAN, AAO, FLF	25	13.83	13.83	0.00	STRUCTURE REPAIR	905	95	0	1,000
1	RHC-P	CN02107	LARAMIE COUNTY	* CR 228A QUARRY ROAD BNSF 245534V	6944	0.58	0.58	0.00	RAILROAD	248	0	28	276
1	RHC-P	CN02108	LARAMIE COUNTY	* CR 103-1 MCLEES ROAD BNSF 245549K	6718	0.56	0.56	0.00	RAILROAD	248	0	28	276
1	RHC-P	CN02109	LARAMIE COUNTY	* CR 228 FISHER CANYON BNSF 245533N	6939	0.13	0.13	0.00	RAILROAD	248	0	28	276
1	SSP-TO	I251169	INTERSTATE 25	NORTH CHEYENNE; CLOSURE GATE SIGNS/FLASHERS	25	18.98	18.98	0.00	SAFETY IMPROVEMENTS	0	254	0	254



# **District 1 STIP 2019-2025**



# 2019

# Current Projects FY 2019

**U.S. 85, Gun Barrel (MP 35-47)**

**Mill, Overlay, Seal Coat: \$5.6 million**





# Current Projects FY 2019

WYO 215, north of Pine Bluffs (MP 0.9 & 1.7)

Bridge Replacement: \$2.2 million





# Current Projects FY 2019

**I-25, Randall Ave – Horse Creek Interchange (MP 11.5-17)**  
**Slab Repair, High Performance Wearing Course: \$3.9 million**



# Current Projects FY 2019

College Drive and Southwest Drive - New Signal: \$128,000





# Current Projects FY 2019

Prairie Avenue / Frontier Mall Drive Roundabout  
Construct Roundabout: \$1.8 million



# Current Projects FY 2019

**New Fiber Optic - Install Fiber Optic Lines: \$1.62 million**



# Current Projects FY 2019

**West Allison crosswalk - Construct crosswalk: \$307,000**





# Current Projects FY 2019

**Parsley Boulevard - Damage repair: \$100,000**



# Current Projects FY 2019

Central /Warren Avenue - Bridge Rehab: \$1.8 million





# Current Projects FY 2019

I-25 bridges over Missile Drive and the BNSF

Bridge Rehab: \$2.6 million



# Current Projects FY 2019

BNSF Railroad crossing resurfacing

Three crossings: \$263,000



Includes crossings at:

- CR 103-1
- Lincolnway
- WYO 211/Horse Creek Road



# Current Projects FY 2019

## Slab Repair – Locations across District 1: \$2.3 million



Locations in Laramie County include:

- Sections of College Drive in east Cheyenne
- Warren Avenue and Central Avenue at 8th Avenue
- Locations along I-80



# Current Projects FY 2019

## Chip seal work - Locations around District 1: \$1.6 million



Locations in Laramie County included:

- Driver Services/Etchepare Rd
- Warren Avenue Parking Area
- U.S. 30/E. Lincolnway, MM 365.28-365.79
- I-80 Service Road, MM 7.89-16.03
- WYO 215, MM 9.78-17.14





# Current Projects FY 2019



## Patching - Locations around District 1: \$1.6 million

Locations in Laramie County include:



Lincolnway from Nationway to Morrie



Central Avenue from WYDOT to the Bishop Boulevard crosswalk



College Drive/WYO 212  
from the west entrance of  
LCCC east to Crow Creek.



# Current Projects FY 2019

**Crack Seal – Locations across District 1: \$500,000**



**2020**

# Emerging Projects FY 2020

**I-80, Between Archer and Burns Interchanges (MP 372-382)**

**Crack and seat, Overlay, Seal Coat, Replace Two Structures: \$22.6 million**



# Emerging Projects FY 2020

**I-25 Closure Gate, MM 19 - New Closure Gate: \$254,000**



\*Moved from previous year



# Emerging Projects FY 2020

**I-25 (MM 0-11) – Striping Tape: \$1.6 million**





# Emerging Projects FY 2020

BNSF Railroad Crossings  
New Circuitry: \$1.7 million



Includes crossings at:

- CR 228A/Quarry Road
- CR 103-1/McLees Road
- CR 228/Fisher Canyon Road
- Joran Road
- WYO 211/Horse Creek Road



# Emerging Projects FY 2020

## District-wide Projects



### Locations to be determined across District 1:

- Chip seal: \$1.8 million
- Contract patching: \$2.8 million
- Crack seal: \$500,000
- Slab repair: \$500,000
- Bridge rehab/epoxy overlay: \$1.5 million
- Thermoplastic marking: \$270,000
- Epoxy Striping: \$550,000



# 2021

# Emerging Projects FY 2021

U.S. 85, Gun Barrel North (MP 47-52)

Mill, Overlay, Seal Coat: \$1.9 million





# Emerging Projects FY 2021

U.S. 85, Meriden (MP 52-56)

Mill, Overlay, Seal Coat: \$2.2 million



# Emerging Projects FY 2021

## Signal Replacements - \$1.2 million



Central and Warren at 8th



Lincolnway and Evans

# Emerging Projects FY 2021

## District-wide Projects



### Locations to be determined across District 1:

- Chip seal: \$1 million
- Contract patching: \$1 million
- Crack seal: \$500,000
- Slab repair: \$1.6 million
- Bridge rehab: \$4.7 million
- Bridge rehab/epoxy overlay: \$1.2 million
- Epoxy striping: \$550,000



**2022**

# Emerging Projects FY 2022

Warren Avenue (Lincolnway – 24<sup>th</sup> St.)

Mill, Overlay, Seal Coat, ADA, Traffic Signals: \$3.2 million



# Emerging Projects FY 2022

I-80 Parsley Blvd. - Bridge Replacement: \$4.4 million





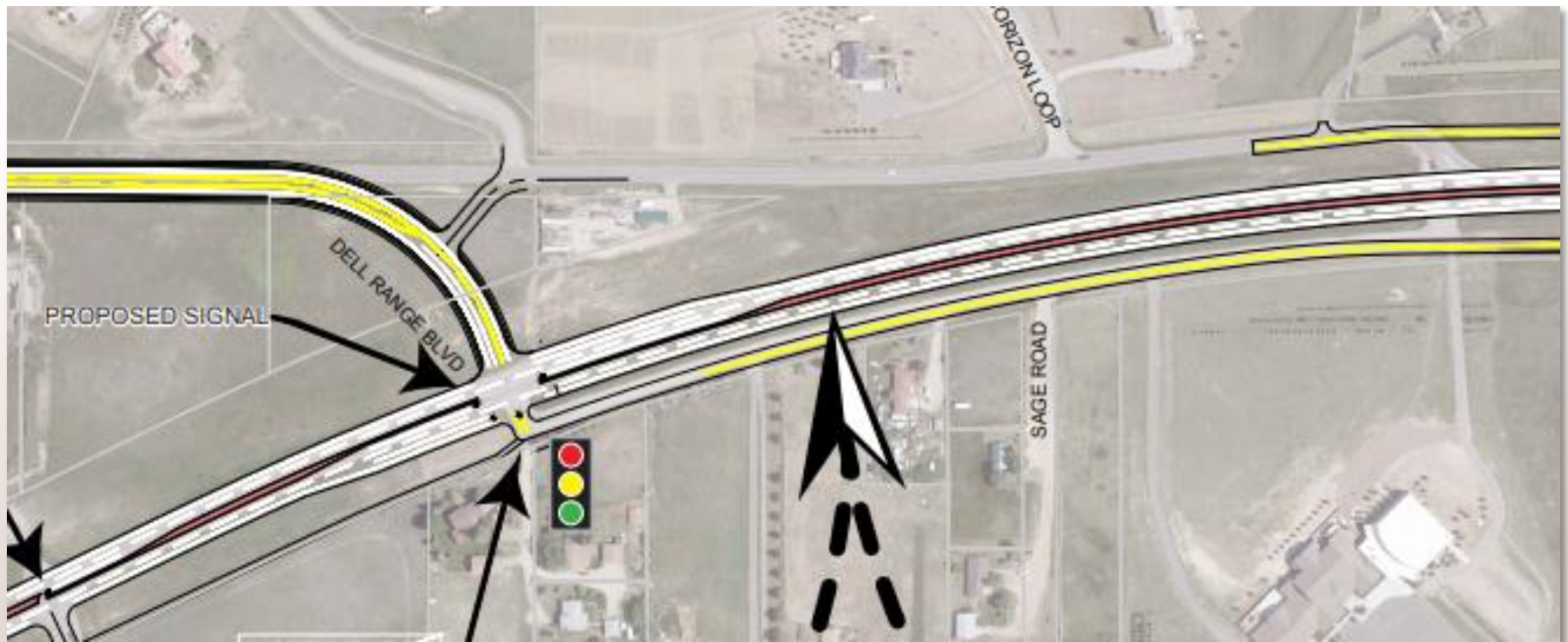
# Emerging Projects FY 2022

Yellowstone and Four Mile - New Signal: \$300,000



# Emerging Projects FY 2022

Dell Range/U.S. 30 – Intersection Relocation \$3.4 million





# Emerging Projects FY 2022

**Whitney Road – Reconstruction: \$3.1 million**





# Emerging Projects FY 2022

## District-wide Projects



### Locations to be determined across District 1:

- Chip seal: \$500,000
- Contract patching: \$800,000
- Crack seal: \$225,000
- Slab repair: \$500,000
- Bridge rehab: \$200,000
- Bridge rehab/epoxy overlay: \$1.1 million

**2023**

# Emerging Projects FY 2023

I-80, west of Pine Bluffs (MP 393-400)

Level, Overlay: \$7 million



# Emerging Projects FY 2023

WYO 223, Terry Ranch Road (MP 0-5.7)

Overlay, Seal Coat, Bridge Replacement: \$4.1 million





# Emerging Projects FY 2023

Warren Avenue (24th St. to Pershing)

Mill, Overlay, Seal Coat, ADA, Traffic Signals: \$820,000





# Emerging Projects FY 2023

U.S. 30 Service Road near Pine Bluffs (MP 401-403)

Mill, Overlay, Seal Coat, New Railroad Crossing: \$615,000



# Emerging Projects FY 2023

I-80, Roundtop – Central Avenue (MP 357-362)

Slab Repair, Grind & Seal: \$4.6 million



# Emerging Projects FY 2023

## District-wide Projects



### Locations to be determined across District 1:

- Chip seal: \$400,000
- Contract patching: \$500,000
- Crack seal: \$250,000
- Slab repair: \$250,000
- Bridge rehab: \$250,000
- Guardrail: \$1 million





**2024**

# Emerging Projects FY 2024

Central Avenue between Pershing and 22<sup>nd</sup> Street  
Mill, Overlay, Seal Coat: \$2.2 million



# Emerging Projects FY 2024

U.S. 30 from Pershing Blvd. to Union Pacific bridge (MP 365-370)

Widen to five lanes, overlay: \$13 million





# Emerging Projects FY 2024

**WYO 215 between Pine Bluffs and Albin (MP 0-10)**

**Mill, Overlay, Seal Coat: \$3.6 million**



# Emerging Projects FY 2024

## District-wide Projects



### Locations to be determined across District 1:

- Chip seal: \$750,000
- Contract patching: \$1 million
- Crack seal: \$500,000
- Slab repair: \$500,000
- Bridge rehab: \$250,000

**2025**



# Emerging Projects FY 2025

I-80, incl. Burns & Egbert interchanges (MP 382-393)

Slab repair, seal, replace structures at MP 386: \$15.2 million



# Emerging Projects FY 2025

I-80 Service Road between Archer and Hillsdale (MP 0-7)

Overlay, Chip seal: \$2.6 million





# Emerging Projects FY 2025

College Drive – South Greeley Highway to Fox Farm Road  
Widen to five lanes, construct new intersection: \$18.7 million





# Emerging Projects FY 2025

## District-wide Projects

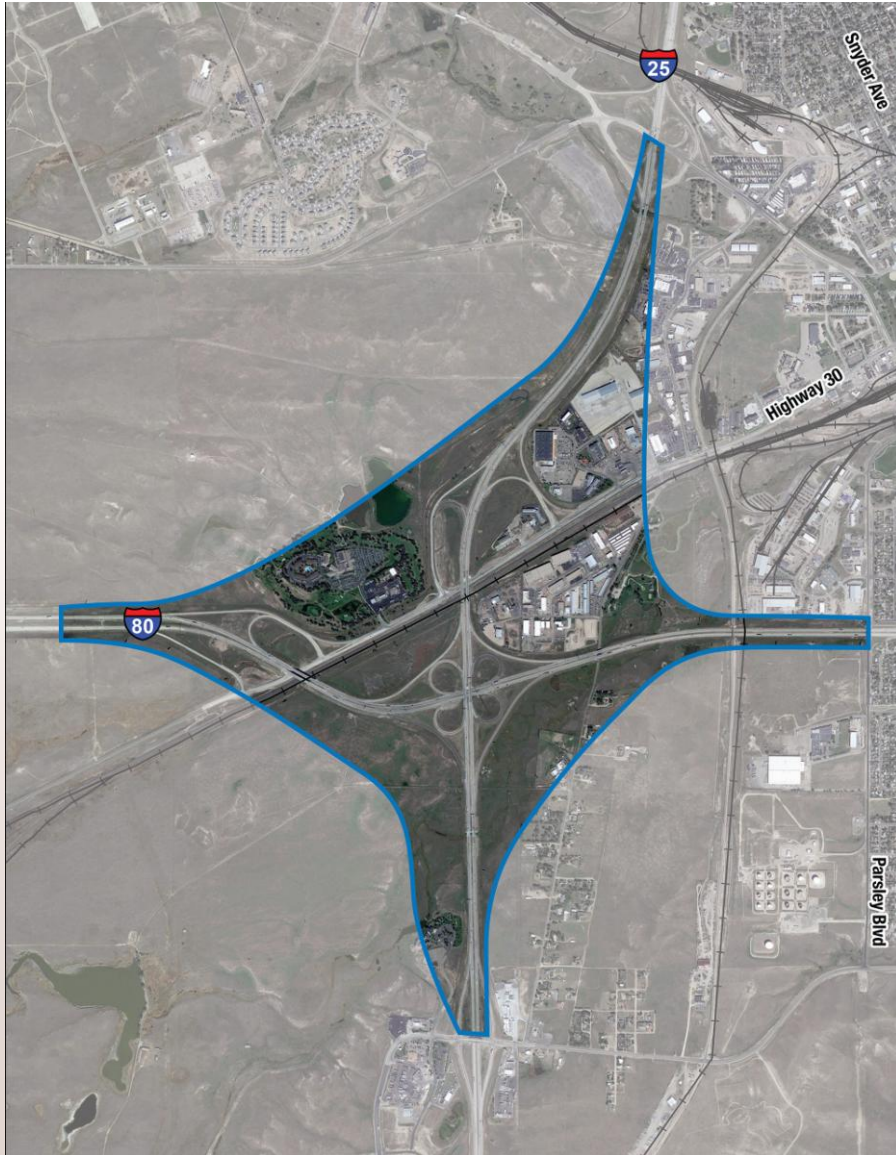


### Locations to be determined across District 1:

- Chip seal: \$500,000
- Contract patching: \$500,000
- Crack seal: \$250,000
- Slab repair: \$250,000
- Bridge rehab: \$480,000

# Local Updates

# I-25/I-80 Interchange Study



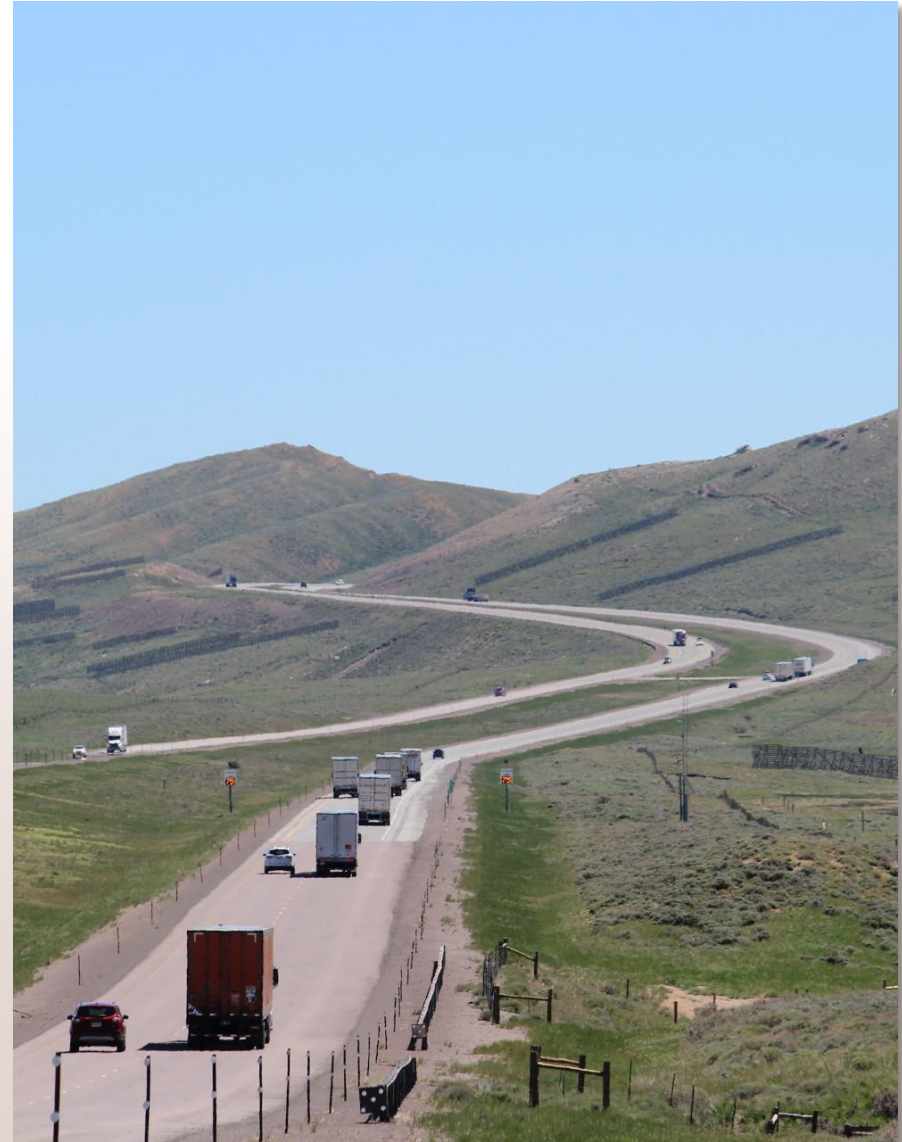
- WYDOT and Jacobs Engineering are currently in design work of the I-25/I-80 interchange in Cheyenne.
- The result of this effort will produce 60% design plans for the project.
- No money is available to fund the project, but WYDOT plans to apply for federal grants for construction.
- Public meetings have been held, including one on May 1. More will be held in the future.
- The project website is at [www.i25i80.com](http://www.i25i80.com).



# BUILD Grant – I-80 Winter Freight



- In December 2018, Wyoming was awarded a \$20 million BUILD grant from the federal government
- The funding will be used to add climbing lanes on I-80 westbound at Cooper Cove and eastbound at Halleck Ridge
- In addition, two truck parking areas will be built at Quealy Dome and Sinclair, each for about 100 trucks
- Construction will begin in 2020



# Whitney Road/U.S. 30



WYDOT understands concerns residents have had about the U.S. 30 corridor from Pershing to Dell Range.

In the last few months, WYDOT has:

- Added larger stop signs and flashing intersection warning signals
- Added stop bars at intersections
- Constructed offset right turn lanes at Whitney and U.S. 30



# Whitney Road/U.S. 30



Cheyenne PD and the  
Wyoming Highway Patrol  
have also been  
increasing enforcement  
on U.S. 30





# Southeast Wyoming Growth



- More than one in four Wyoming residents live in Southeast Wyoming/ District 1 (Laramie, Albany, Carbon counties)
- Cheyenne and Laramie County remain the largest city and county in the state.
- Laramie County grew 7.7% from 2010 to 2018. With 98,976 residents, it is close to breaking the 100,000 mark in the next few years.
- The city of Laramie has passed Gillette to become Wyoming's third-largest city (as of 2018 estimates).
- Laramie and Albany counties have consistently grown over the last decade, while Carbon County has lost a small number of population.

**This presents new challenges for WYDOT...**

# Southeast Wyoming Growth



## **WYDOT recognizes this trend and is adjusting the STIP accordingly**

- The future I-25/I-80 interchange project will accommodate growth for years to come
- WYDOT continues to monitor development across the state for effects of population and economic growth, ranging from residential construction to wind power development in Albany and Carbon counties.
- The U.S. 30 project in 2024 will widen that highway to five lanes from Pershing Boulevard east to the UPRR. This will accommodate expected growth in east Cheyenne.
- The College Drive widening project in 2025 will result in a right-angle intersection that will match the planned Sweetgrass development in southeast Cheyenne.

# Wind Development



- New wind farms are set to be installed over the next few years in Carbon, Albany, and Laramie counties.
- WYDOT has been working with wind energy companies to create road use agreements for construction.
- WYDOT will do our best to help companies with their development while also considering road maintenance and the safety of the traveling public.





# World War II Vet Funeral Procession



- A recently DNA-identified World War II veteran was transported from DIA to Laramie on June 26.
- WYDOT allowed the High Plains Road bridge (I-25, Exit 4) to be closed so that fire companies could set up equipment and a flag on the bridge.
- WYDOT also worked with ACFD1 and the Laramie Fire Department for similar agreements in Albany County.



# 2018 Wildfires



## Two major wildfires affected Southeast Wyoming in 2018

- The Badger Creek Fire in Albany County forced the closure of WYO 230 and WYO 10 and burned 21,310 acres
- The Ryan Fire in Carbon County threatened WYO 230 at times and burned 28,585 acres
- WHP and WYDOT maintenance crews assisted USFS, fire crews, and law enforcement with road closures
- Maintenance also fixed burned fences





# New Webcams



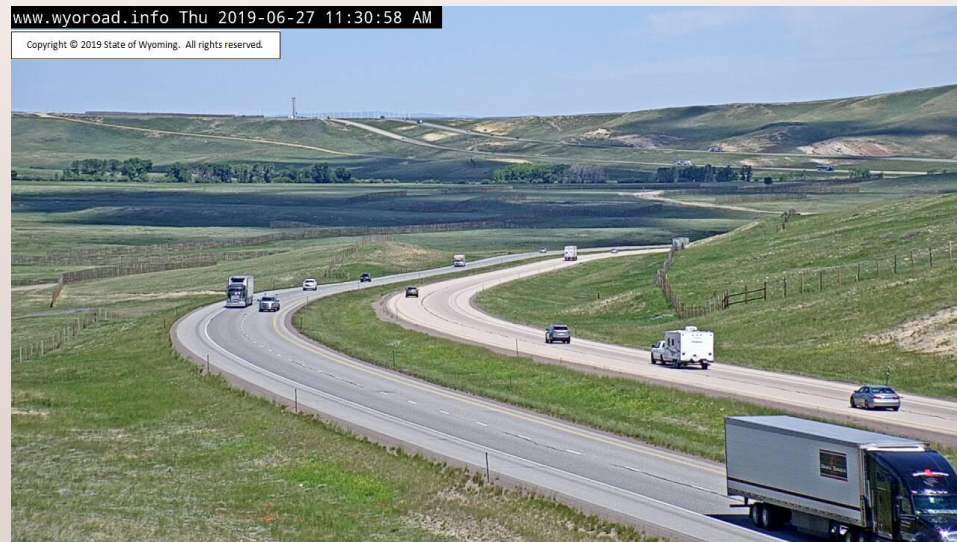
**Three new webcams have been installed in SE Wyoming**



WYO 230 at MM 33 – top of canyon



U.S. 287 at MM 414 – North of Tie Siding



I-80 at MM 284 – Strouss Hill



# Snowy Range Road Bridge Opening



## The new Snowy Range Road Bridge opened on July 16, 2018

- A grand opening ceremony was held that was attended by around 200 people
- Residents could walk the bridge the day before it opened
- The bridge was named “Project of the Year” by the Wyoming Engineering Society
- WYDOT continues to analyze traffic patterns created by the new bridge.



# Emergency Assistance



**WYDOT and WHP assisted with a road closure during the June 6, 2018 Laramie tornado and a service road closure for a UPRR crash on Oct. 5, 2018**



Laramie Maintenance repairs fencing destroyed by the June 2018 tornado.



Cheyenne Maintenance and WHP assisted with the UPRR derailment in October 2018.



# Partnership Opportunities



# WYDOT Partnerships



- **Funding Opportunities**
- **Construction Partnerships**
- **Supply Purchases**



# WYDOT Partnerships

## Funding Opportunities – Local Government Coordination



- **Bridge Replacement “Off System” (BROS)**
- **Context Sensitive Amenities (CSAs)**
- **Industrial Road Program (IRP)**
- **Transportation Alternatives Program (TAP)**
- **Congestion Mitigation Air Quality (CMAQ)**



# WYDOT Partnerships

## Funding Opportunities – Local Government Coordination



- **High Risk Rural Road Program (HRRR)**
- **Federal Lands Access Program (FLAP)**
- **Commission Road Improvement Program (CRIP)**
- **Public Transportation**





# WYDOT Partnerships

## Construction Partnerships



- **Aggregate Stockpiles**
- **Signs & Striping**
- **Chip Seal**
- **Sidewalk & Lighting**
- **Fence**
- **Recycled Asphalt Pavement**
- **Pavement**
- **Water & Sanitary Sewer Line**
- **Utility Upgrades**

# WYDOT Partnerships

## Supply Purchases – Piggybacking & Joint Bid



- Bulk Sodium Chloride
- Crack Sealing Material
- Survey Stakes
- Duty Jackets
- Work Wear
- Road Oil
- Drug & Alcohol Testing Services
- Solid & Liquid Anti-Icers
- Reflective Sheeting
- Fabricated Steel
- Propane

- Fuel (gasoline & diesel)
- Striping Paint
- Paint Beads
- Road Salt

- Vehicles
- Equipment

# Local Government Coordination

## Contacts



**Tom DeHoff, *District Engineer***

(307) 745-2100 | [Tom.DeHoff@wyo.gov](mailto:Tom.DeHoff@wyo.gov)

**Shelby Carlson, *Chief Engineer***

(307) 777-4484 | [Shelby.Carlson@wyo.gov](mailto:Shelby.Carlson@wyo.gov)

**Mark Gillett, *Assistant Chief Engineer - Operations***

(307) 777-4484 | [Mark.Gillett@wyo.gov](mailto:Mark.Gillett@wyo.gov)

**Keith Fulton, *Assistant Chief Engineer – Engineering and Planning***

(307) 777-4484 | [Keith.Fulton@wyo.gov](mailto:Keith.Fulton@wyo.gov)

**Sara B. Janes Ellis, *Local Government Coordinator***

(307) 777-4438 | [Sara.Ellis@wyo.gov](mailto:Sara.Ellis@wyo.gov)



# Thanks



*Thank you for your time.*

*Let us know how we can help.*

*Any questions?*