

# EAST CHEYENNE PUBLIC MEETING

US 30  
Whitney Road/  
Dell Range Blvd  
April 13, 2022



---

# Project Team



**Laramie County**



**WYOMING** Department  
of Transportation



**City of Cheyenne**



# AGENDA

1. Introduction
2. Project Locations
3. Why are we doing these projects?
4. Project Highlights:
  - Whitney Road & Dell Range (County & City)
  - US Highway 30 (WYDOT)
5. Move to Open House Area for questions





# PROJECT OVERVIEW 1

## WHITNEY & DELL RANGE







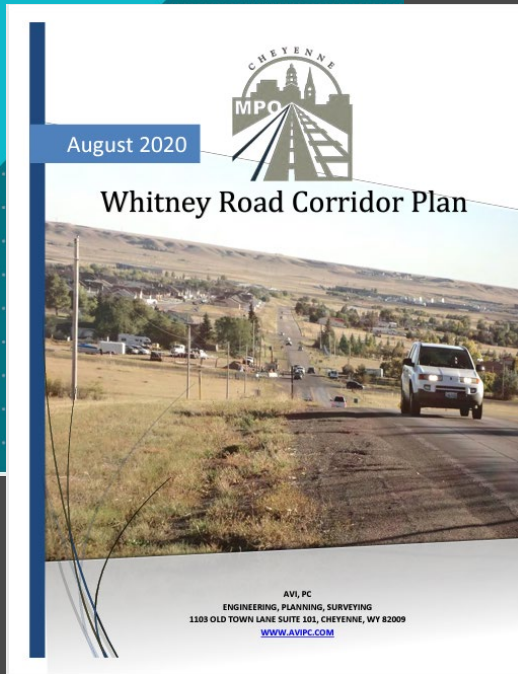
# PROJECT OVERVIEW 2

US 30





# BACKGROUND

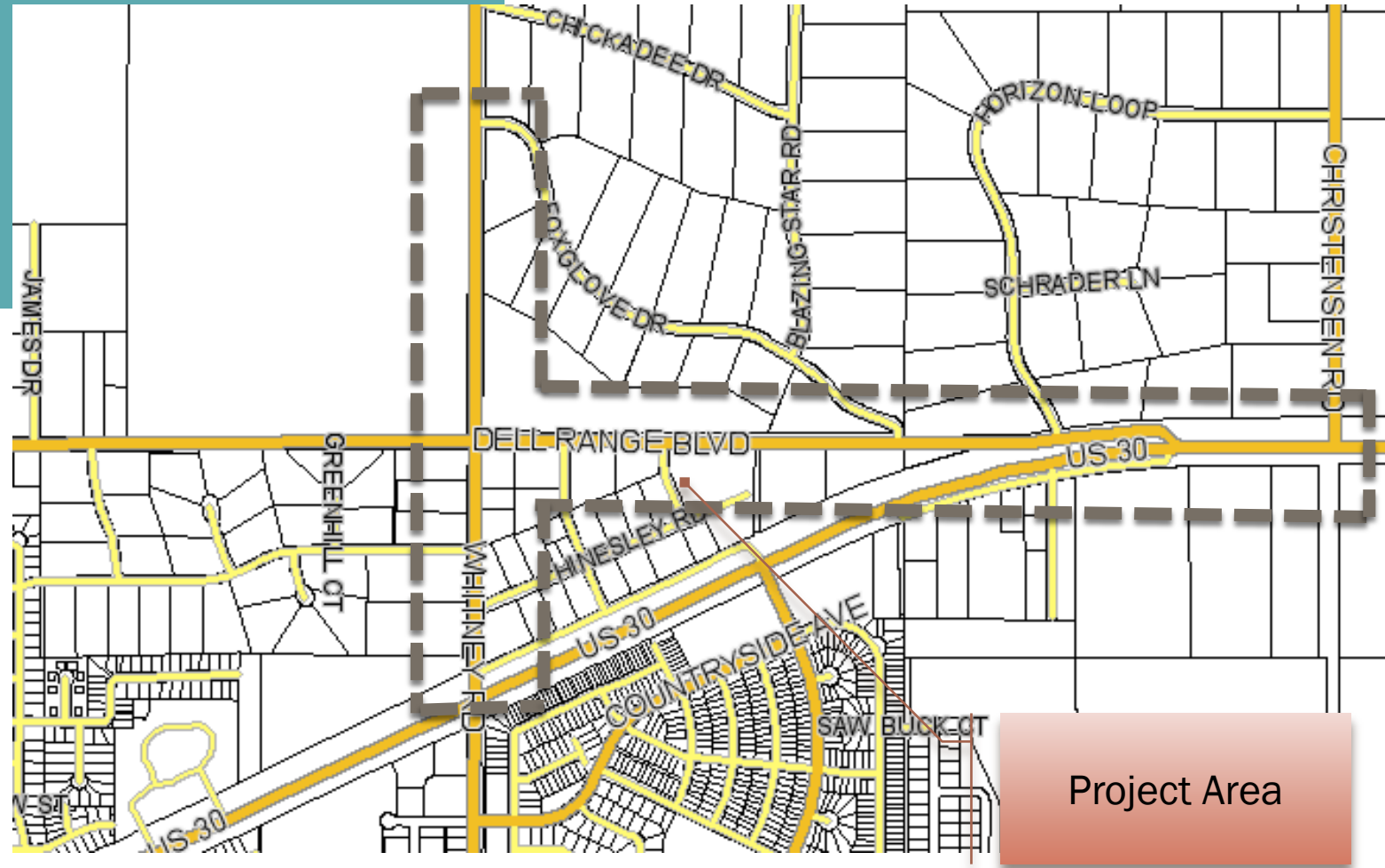


**CHEYENNE  
METROPOLITAN  
PLANNING  
ORGANIZATION**

# PROJECT GOALS:

- Improve **SAFETY** for all Users
- Operate Efficiently (present & future)

# Whitney Road & Dell Range Blvd.



Project Area

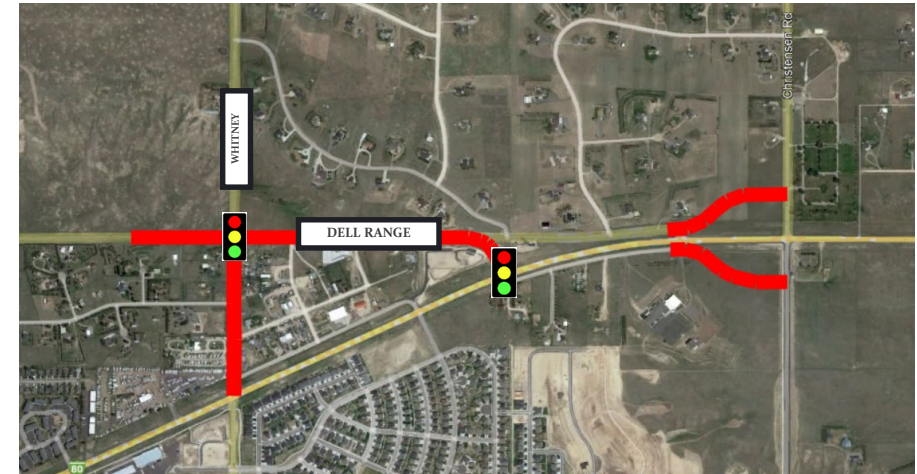
## Project Location



# Whitney Road & Dell Range Blvd

## Project Highlights

- Limits
  - Whitney Road - ~ 300 feet North of Dell Range to US 30
  - Dell Range Blvd - ~ 700 feet West of Whitney Road to New intersection at US30
  - Frontage Roads tying into Christensen Road
- Traffic Control Installations
  - Signal at Whitney and Dell Range
  - Signal at Dell Range and US30
- When? – Construction anticipated to begin Summer 2023

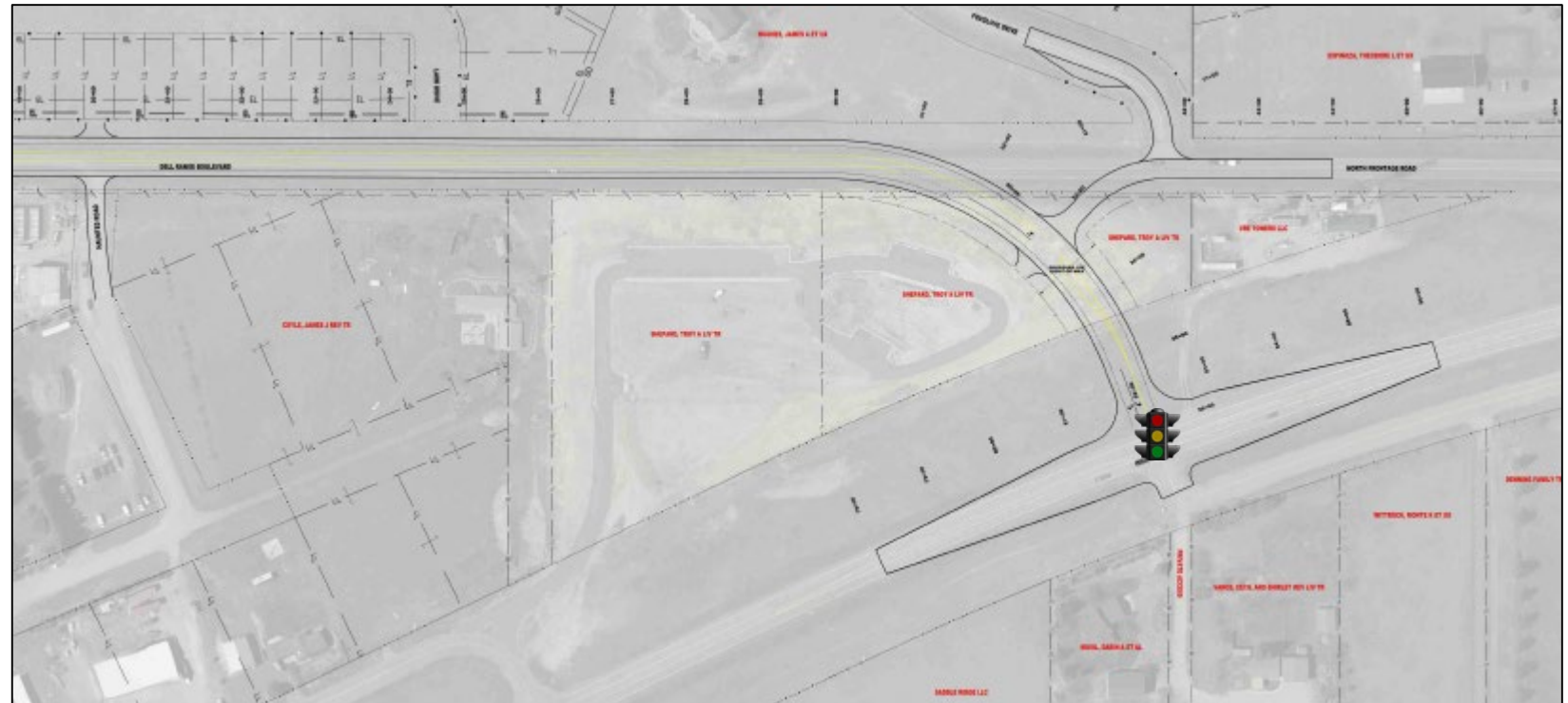
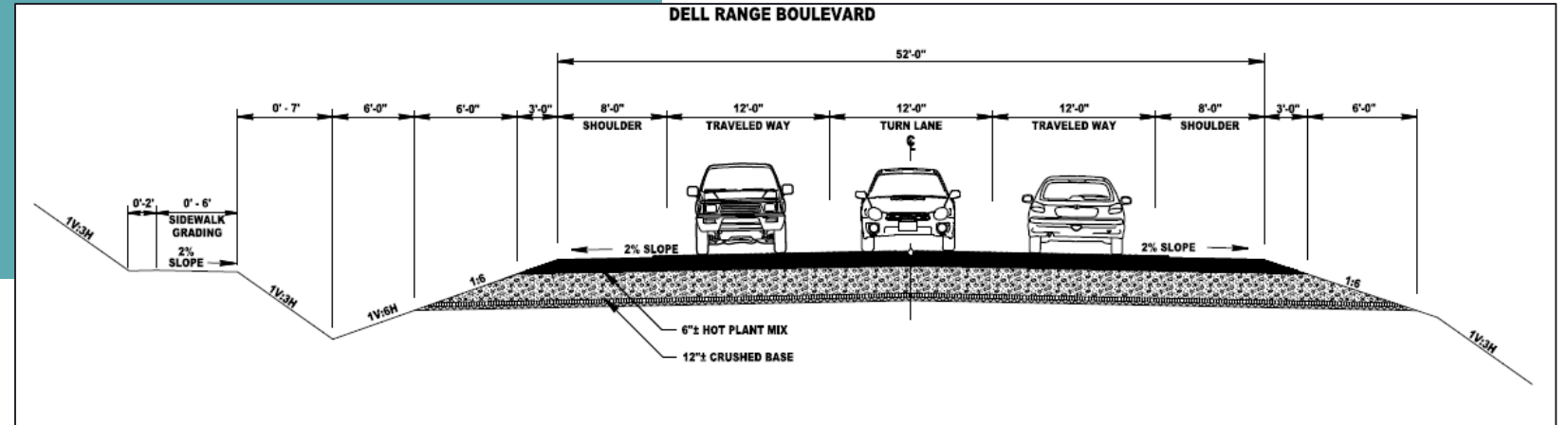


# Dell Range Blvd



# Whitney Road & Dell Range Blvd

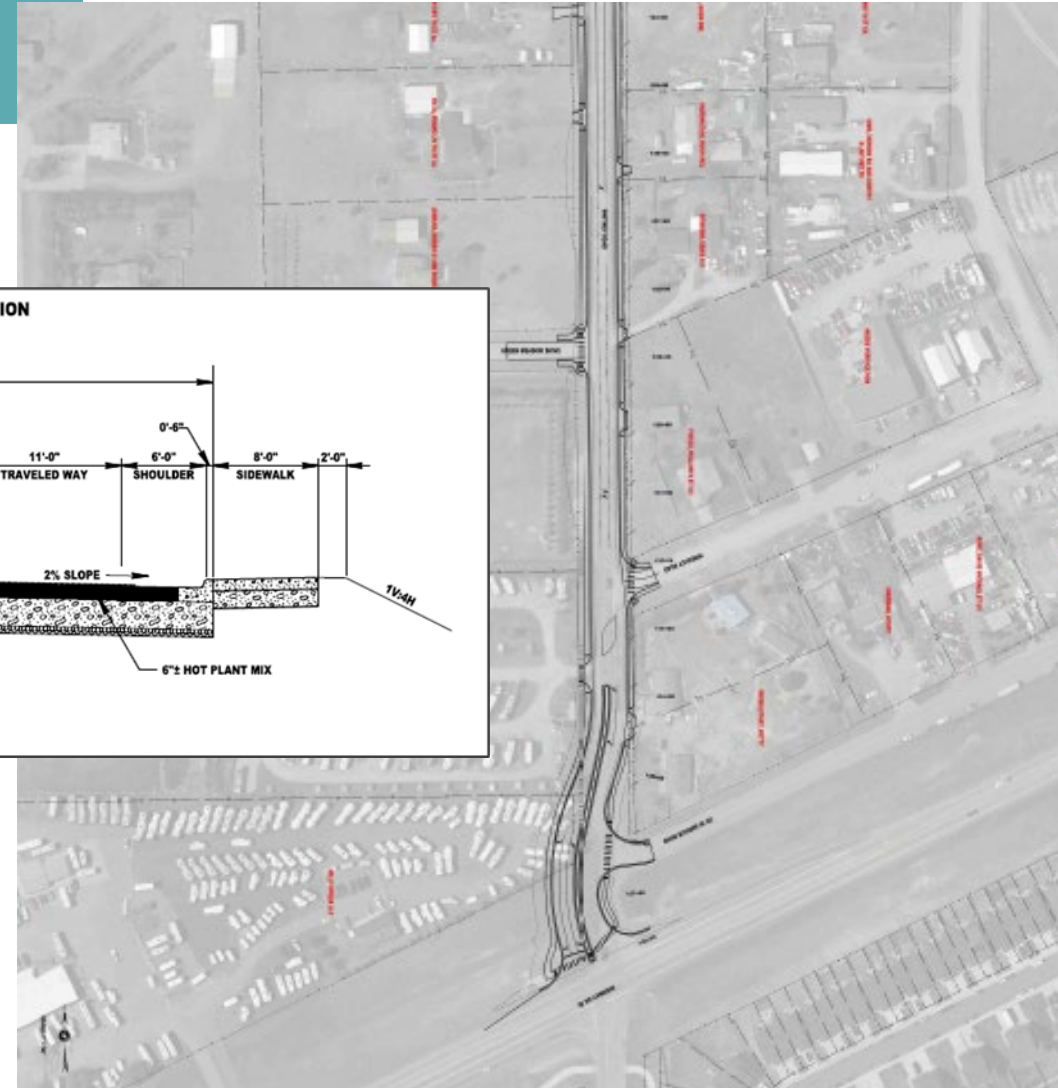
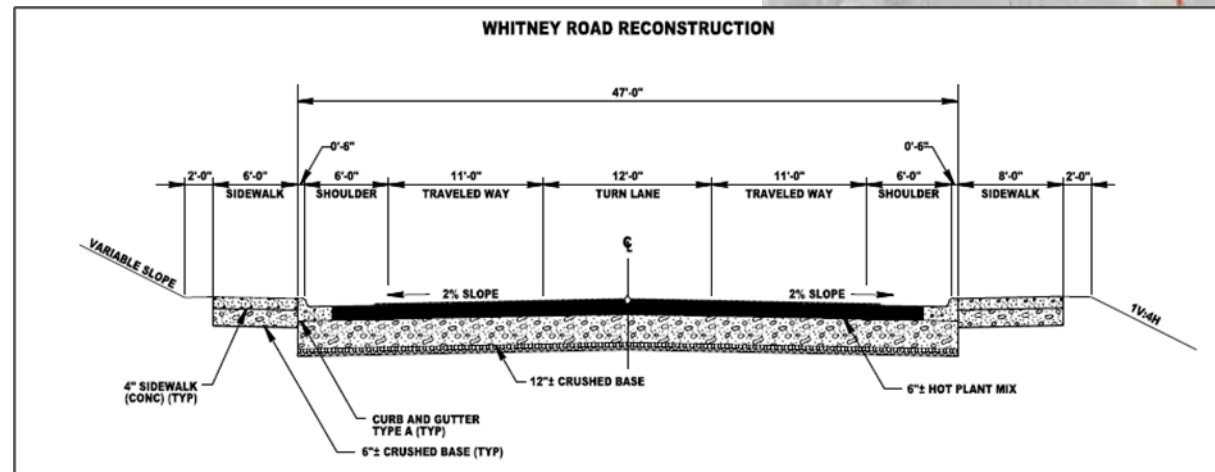
## Dell Range Blvd



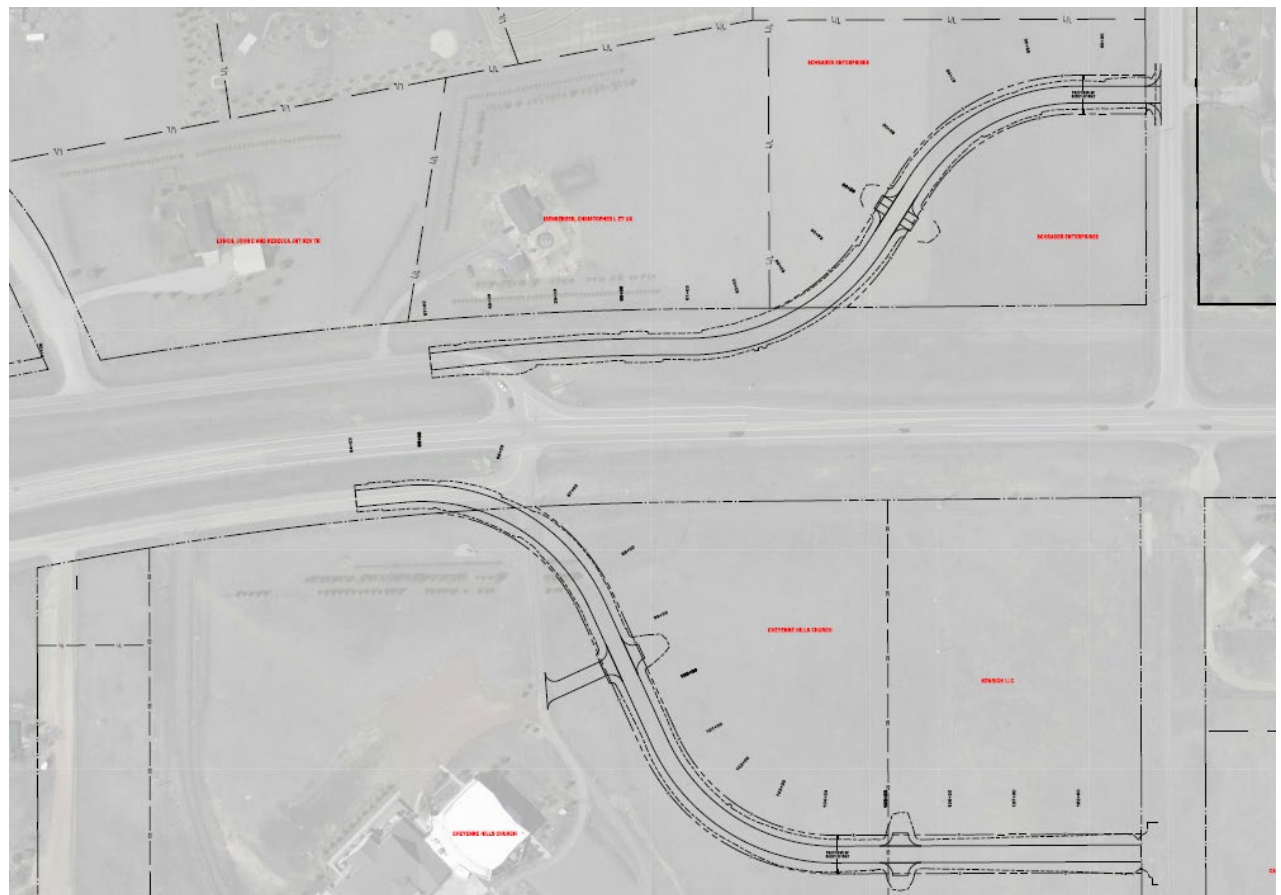


# Whitney Road & Dell Range Blvd

## Whitney Road



# Frontage Roads



# US 30 RECONSTRUCTION





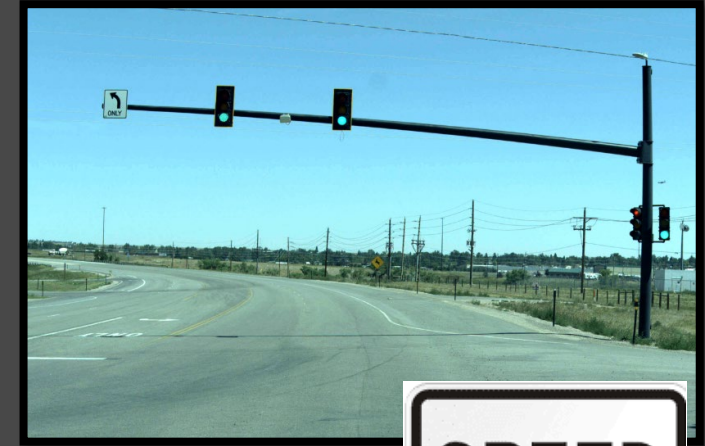


# PROJECT LIMITS



# DESIGN FEATURES:

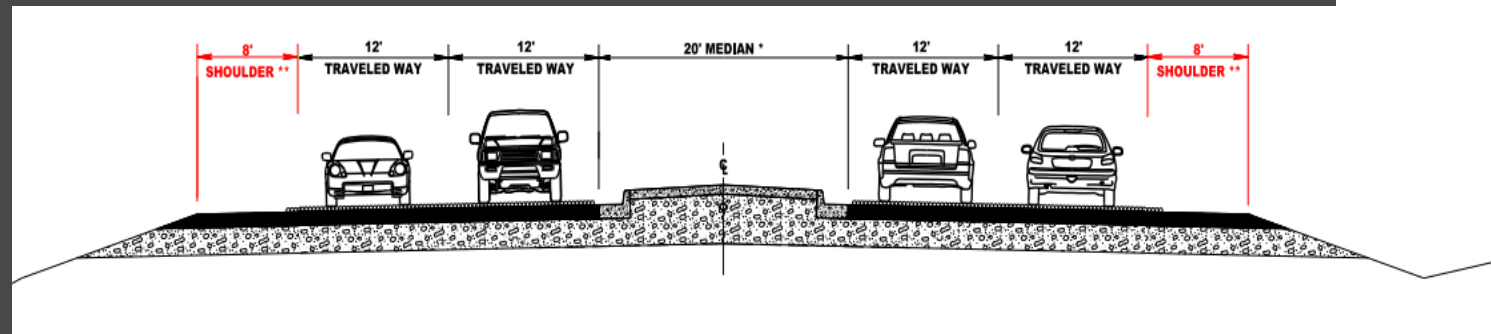
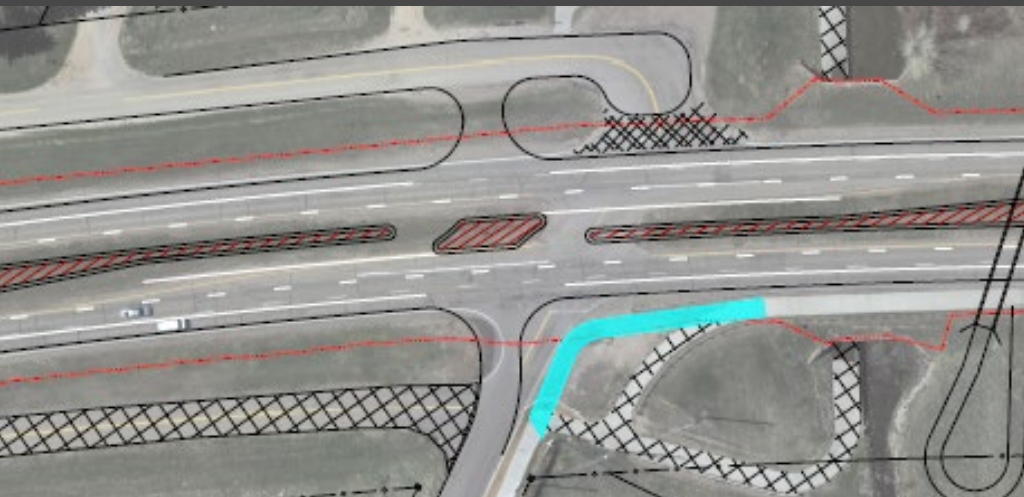
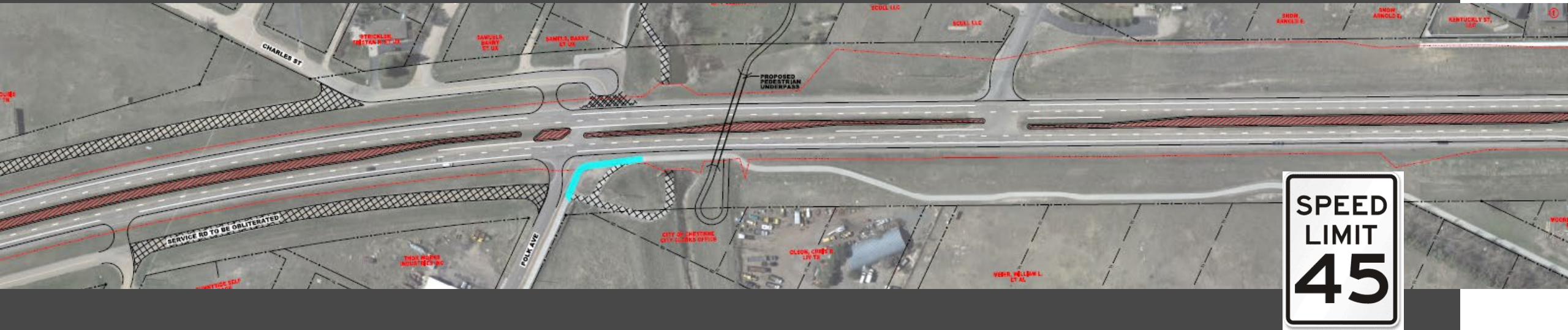
- SPEED LIMITS
  - POSTED SPEED VS. OPERATING SPEED
  - 45 MPH
  - 55 MPH
- TRAFFIC SIGNALS
  - STRATEGY FOR CORRIDOR
  - NEW SIGNALS AT DELL RANGE AND WHITNEY INTERSECTIONS
- LIMIT HIGH-RISK MOVEMENTS
  - $\frac{3}{4}$  MOVEMENTS AT HIGH-RISK INTERSECTION
  - ELIMINATE CONFLICT POINTS
- UPGRADE OTHER SAFETY ELEMENTS
  - PEDESTRIAN CROSSINGS
  - INTERSECTION GEOMETRICS
  - LIGHTING





# ROADWAY SECTION 1

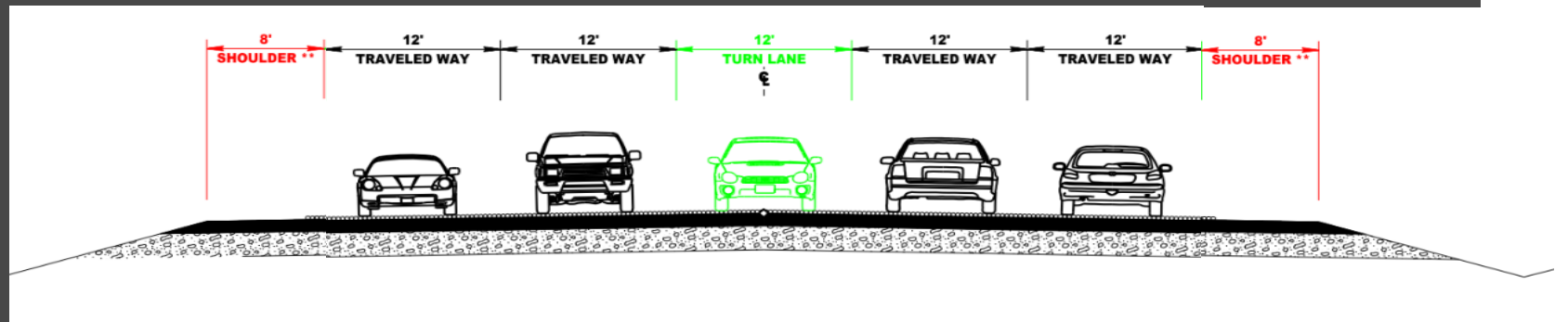
## PERSHING to WHITNEY





# ROADWAY SECTION 2

## WHITNEY to UPRR BRIDGE



We invite you to join us in the lobby for further discussion or questions.

More info can be found at the website below or by scanning the QR code

[https://www.dot.state.wy.us/home/news\\_info/district\\_news\\_info/district\\_1/us30-whitney-dell-range-project.html](https://www.dot.state.wy.us/home/news_info/district_news_info/district_1/us30-whitney-dell-range-project.html)

