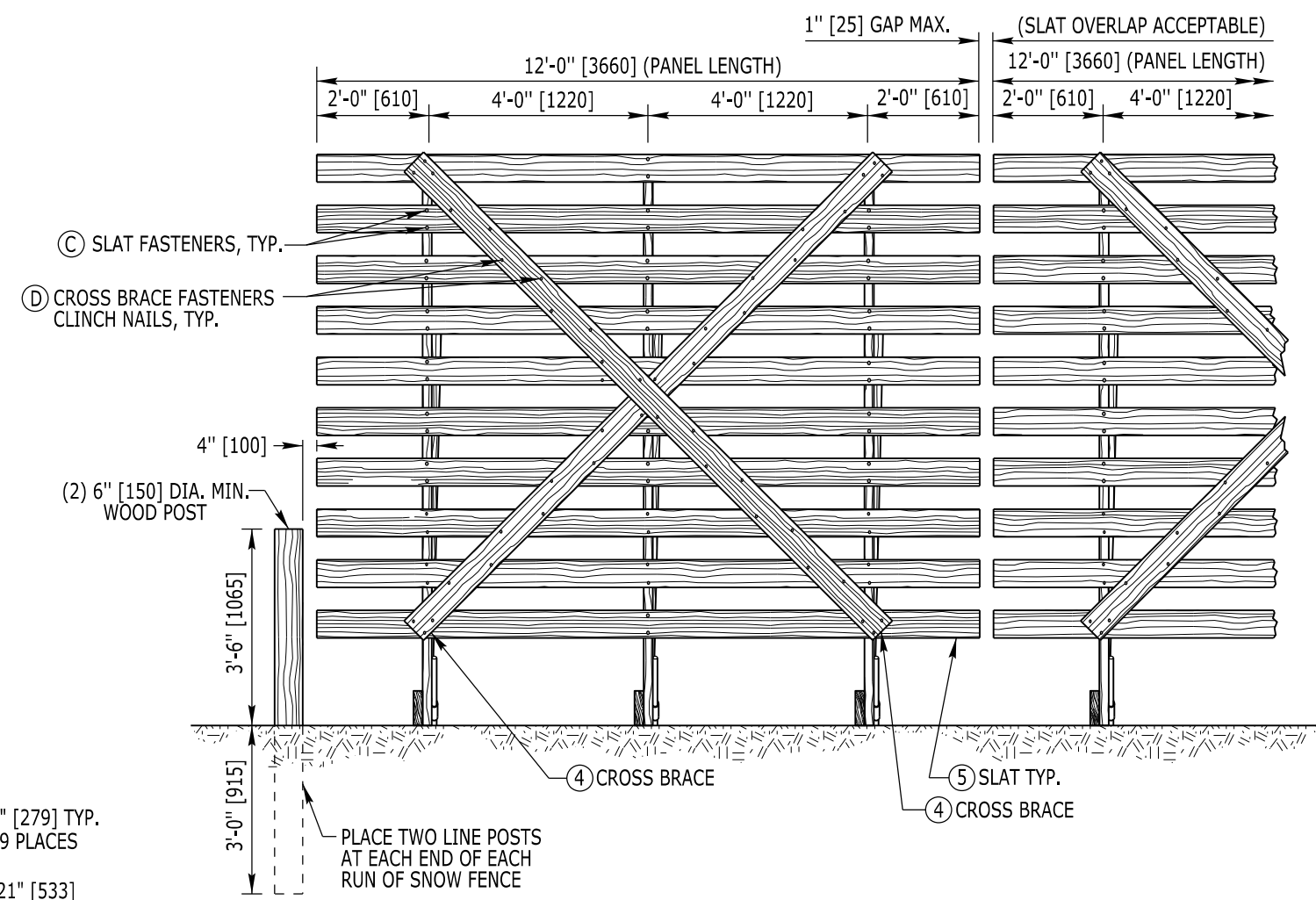


1 SILL

END VIEW

SLAT SPACING



FRONT VIEW

HARDWARE FOR ONE 10 FT [3.0 m] PANEL		
NOTE	QUANTITY	DESCRIPTION
(A)	6	5/8" DIA. x 6" [16 DIA. x 150] FULLY THREADED BOLT WITH WASHER UNDER NYLON INSERT LOCKNUT
(B)	3	5/8" DIA. x 6" [16 DIA. x 150] FULLY THREADED BOLT WITH WASHER UNDER HEAD AND UNDER NYLON INSERT LOCKNUT
(C)	66	SLAT FASTENERS - 10D [75 LONG] RING SHANK OR SCREW SHANK NAILS (FULL HEAD)
(D)	44	CROSS BRACE FASTENERS - 8D [65 LONG] COMMON NAILS
(E)	6	#6 x 5'-0" [#19 x 1525] REBAR
(F)	6	5" x 1 1/2" x 1/8" [127 x 38 x 3] ANCHOR CLIP FOR 5/8" [16] DIA. BOLT

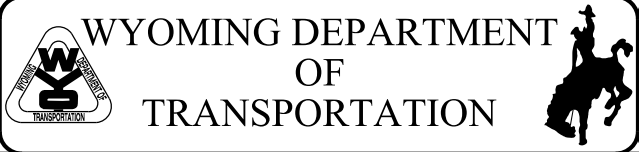
PROVIDE BOLTS, NYLON INSERT LOCKNUTS AND WASHERS WHICH ARE GALVANIZED AND A307 OR SAE GRADE 2 OR BETTER.

LUMBER FOR ONE 10 FT [3.0 m] PANEL			
ITEM NO.	NO. OF PIECES	LUMBER SIZE	DESCRIPTION
(1)	3	2" x 6" x 7'-0" [50 x 150 x 2135]	SILL
(2)	3	2" x 6" x 9'-0" [50 x 150 x 2740]	BRACE
(3)	3	2" x 6" x 10'-0" [50 x 150 x 3050]	FRONT VERTICAL
NOTE: PRESSURE TREAT ALL ABOVE FRAME MEMBERS.			
(4)	2	1" x 6" x 12'-0" [25 x 150 x 3660]	CROSS BRACE
(5)	11	1" x 6" x 12'-0" [25 x 150 x 3660]	SLAT

Designed by: WBW
 Drawn by: GLD
 Checked by: WBW
 Previous Dwg. No. 616-1B

PANEL CONSTRUCTION DETAILS

Note: Units shown in brackets [] are metric and are in millimeters (mm) unless other units are shown.

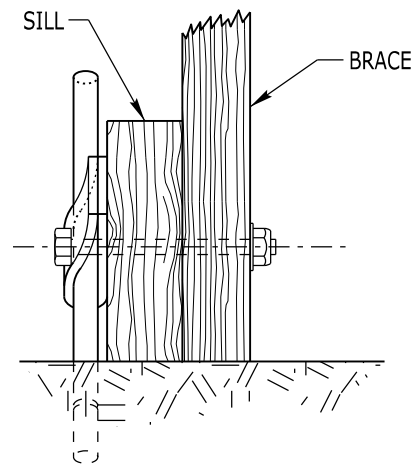


10 FT [3 m] WOOD SNOW FENCE

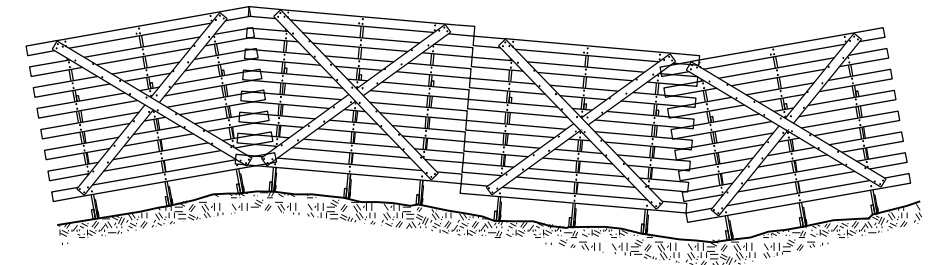
STANDARD PLAN

STANDARD PLAN NUMBER
616-1C
 SHEET 1 of 2
 Issued by: ENGINEERING SERVICES
 Date Issued: SEPTEMBER 2023

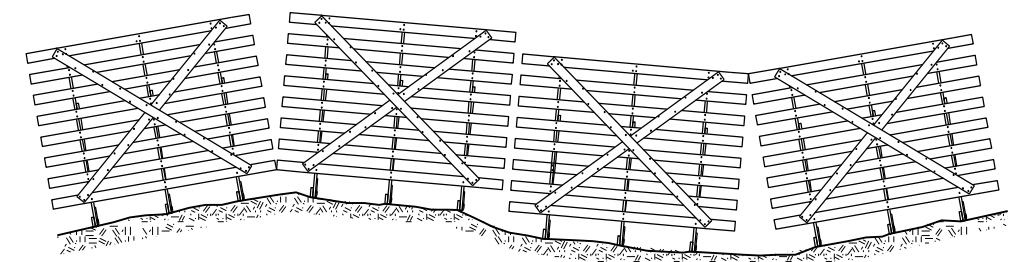
NOTE:
PLACE THE REAR ANCHOR ON THE OPPOSITE
SIDE OF THE SILL AS THE FRONT ANCHOR.



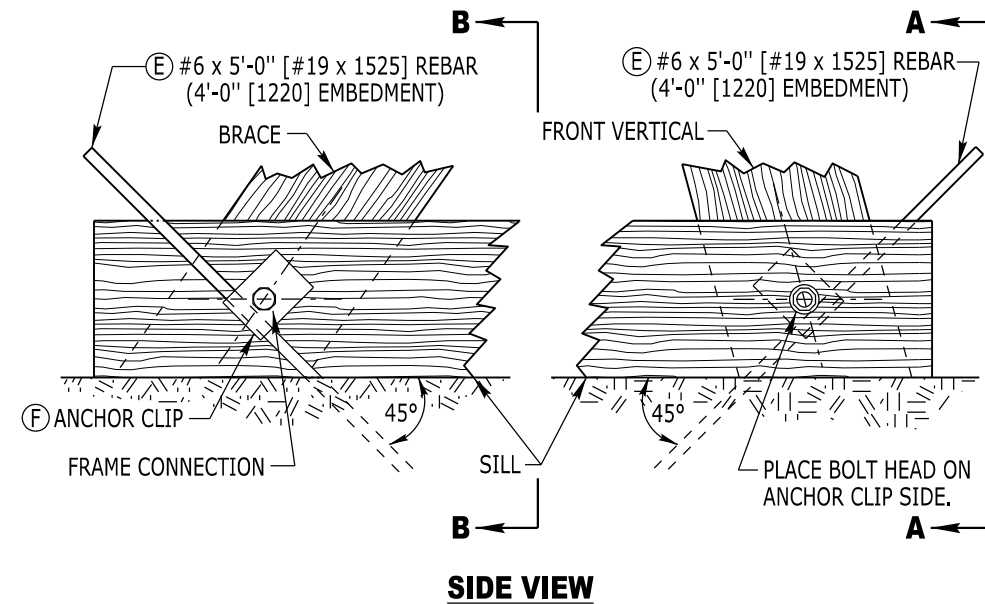
B-B REAR ANCHOR VIEW



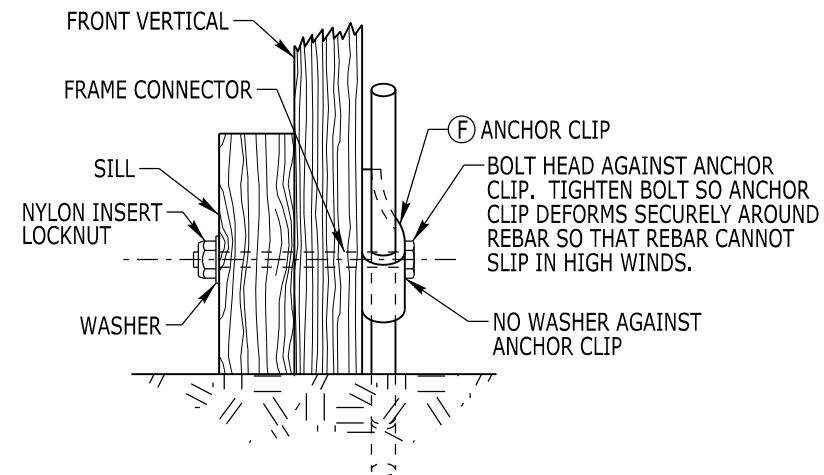
THE RIGHT WAY



THE WRONG WAY



SIDE VIEW

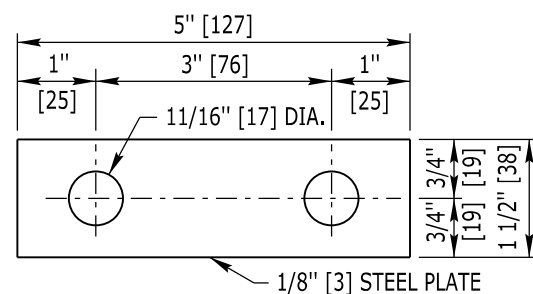


A-A FRONT ANCHOR VIEW

PANEL LAPPING DETAIL

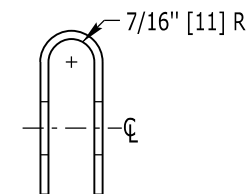
NOTE: OVERLAP PANELS TO ELIMINATE SPACES BETWEEN PANELS. SPACES GREATLY REDUCE TRAPPING EFFICIENCY AND SNOW STORAGE CAPACITY.

(F) ANCHOR CLIP CONNECTION DETAIL



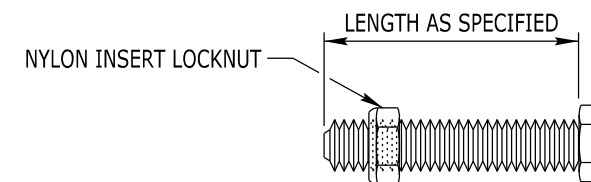
**(F) ANCHOR CLIP FOR
5/8" [16] DIA. BOLT**

(FLAT PLATE PRIOR TO BENDING)
PROVIDE HOLES NO GREATER THAN
1/16 in. [1.5] LARGER THAN THE BOLT



**(F) END VIEW OF
ANCHOR CLIP**

(AFTER BENDING)



**(A & B) FULLY THREADED
BOLTS**

Designed by: WBW
Drawn by: GLD
Checked by: WBW
Previous Dwg. No. 616-1B

FRAME CONNECTION AND PANEL OVERLAP DETAILS

Note: Units shown in brackets [] are metric and are in millimeters (mm) unless other units are shown.



10 FT [3 m] WOOD SNOW FENCE

STANDARD PLAN

STANDARD PLAN NUMBER
616-1C
SHEET 2 of 2
Issued by: ENGINEERING SERVICES
Date Issued: SEPTEMBER 2023