

HOLE MAY BE DRILLED FOLLOWING FRAME ASSEMBLY TO ENSURE FULL BEARING ON THE SILL.

HARDWARE FOR ONE 12 FT [3.6 m] PANEL			
NOTE	QUANTITY	DESCRIPTION	
(A)	6	5/8" DIA. x 6" [16 DIA. x 150] FULLY THREADED BOLT WITH WASHER UNDER NYLON INSERT LOCKNUT	
(B)	15	5/8" DIA. x 6" [16 DIA. x 150] FULLY THREADED BOLT WITH WASHER UNDER HEAD AND UNDER NYLON INSERT LOCKNUT	
(C)	78	SLAT FASTENERS - 10D [75 LONG] RING SHANK OR SCREW SHANK NAILS (FULL HEAD)	
(D)	44	CROSS BRACE FASTENERS - 8D [65 LONG] COMMON NAILS	
(E)	6	#6 x 5'-0" [#19 x 1525] REBAR	
(F)	6	5" x 1 1/2" x 1/8" [127 x 38 x 3] ANCHOR CLIP FOR 5/8" [16] Ø BOLT	

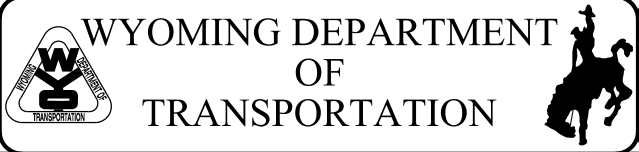
PROVIDE BOLTS, NYLON INSERT LOCKNUTS AND WASHERS WHICH ARE GALVANIZED AND A307 OR SAE GRADE 2 OF BETTER.

LUMBER FOR ONE 12 FT [3.6 m] PANEL			
ITEM NO.	NO. OF PIECES	LUMBER SIZE	DESCRIPTION
(1)	3	2" x 6" x 8'-0" [50 x 150 x 2440]	SILL
(2)	3	2" x 8" x 11'-0" [50 x 205 x 3350]	LONG BRACE
(3)	3	2" x 6" x 6'-0" [50 x 150 x 1830]	SHORT BRACE
(4)	3	2" x 6" x 12'-0" [50 x 150 x 3660]	FRONT VERTICAL
(5)	3	2" x 6" x 4'-6" [50 x 150 x 1370]	KNEE BRACE
NOTE: PRESSURE TREAT ALL ABOVE FRAME MEMBERS.			
(6)	2	1" x 6" x 12'-0" [25 x 150 x 3660]	CROSS BRACE
(7)	13	1" x 6" x 12'-0" [25 x 150 x 3660]	SLAT

Designed by: WBW
 Drawn by: GLD
 Checked by: WBW
 Previous Dwg. No. 616-02B

PANEL CONSTRUCTION DETAILS

Note: Units shown in brackets [] are metric and are in millimeters (mm) unless other units are shown.

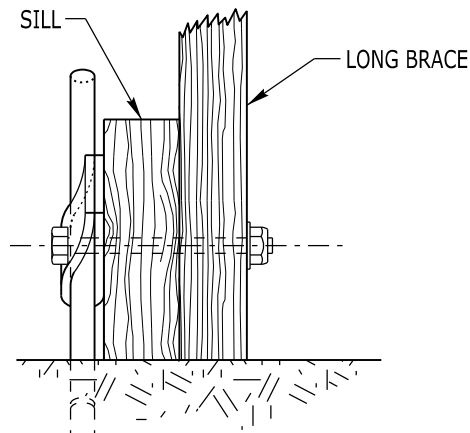


12 FT [3.6 m] WOOD SNOW FENCE

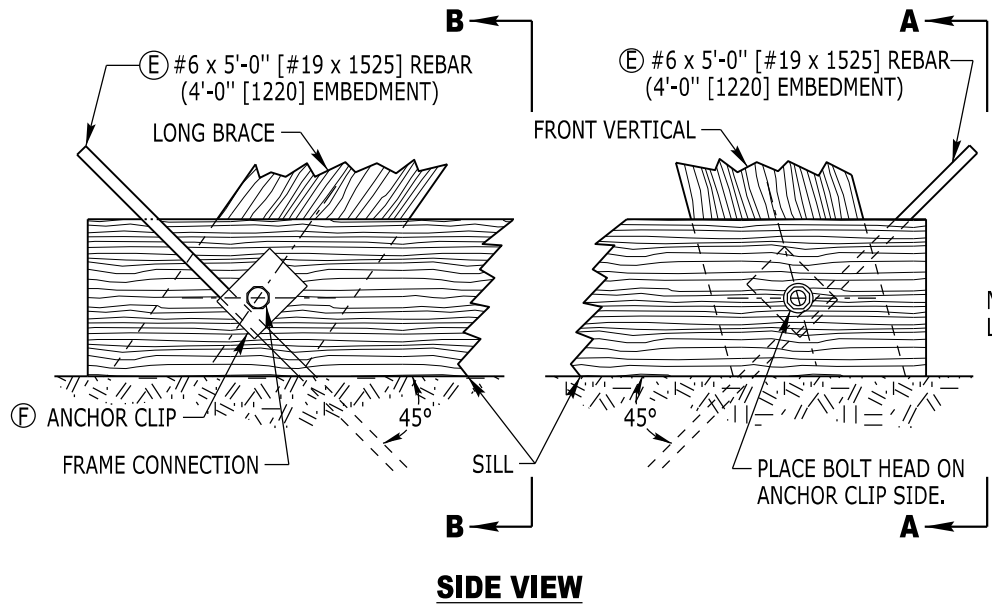
STANDARD PLAN

STANDARD PLAN NUMBER
616-2C
 SHEET 1 of 2
 Issued by: ENGINEERING SERVICES
 Date Issued: SEPTEMBER 2023

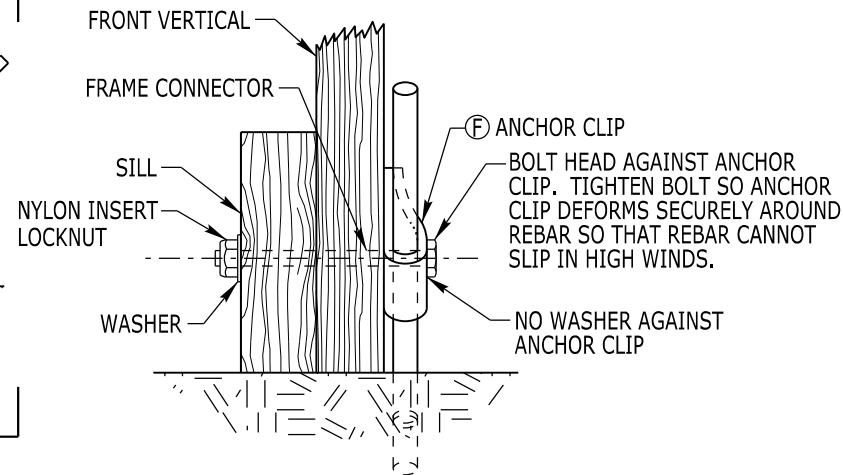
NOTE:
PLACE THE REAR ANCHOR ON THE OPPOSITE
SIDE OF THE SILL AS THE FRONT ANCHOR.



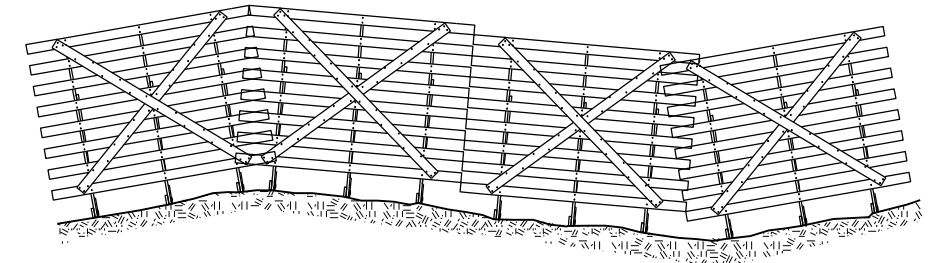
B-B REAR ANCHOR VIEW



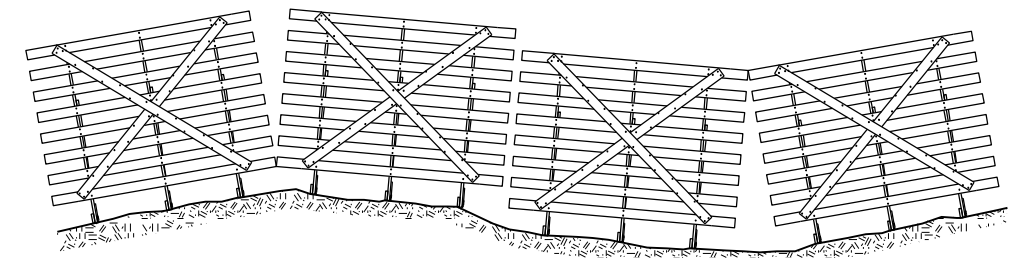
SIDE VIEW



A-A FRONT ANCHOR VIEW



THE RIGHT WAY

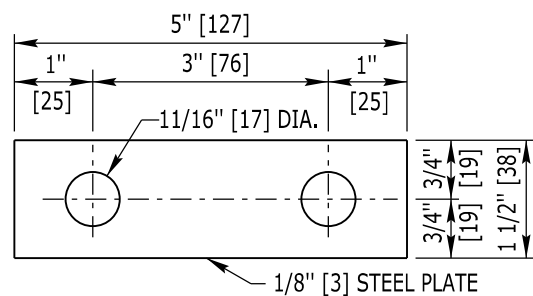


THE WRONG WAY

PANEL LAPPING DETAIL

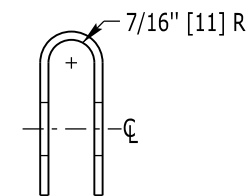
NOTE: OVERLAP PANELS TO ELIMINATE SPACES BETWEEN PANELS. SPACES GREATLY REDUCE TRAPPING EFFICIENCY AND SNOW STORAGE CAPACITY.

(F) ANCHOR CLIP CONNECTION DETAIL



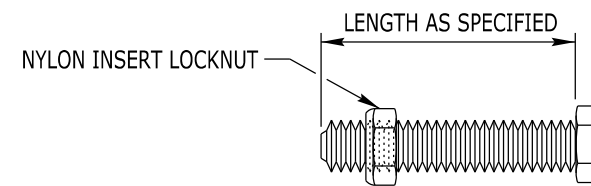
**(F) ANCHOR CLIP FOR
5/8" [16] DIA. BOLT**

(FLAT PLATE PRIOR TO BENDING)
PROVIDE HOLES NO GREATER THAN
1/16 in. [1.5] LARGER THAN THE BOLT



**(F) END VIEW OF
ANCHOR CLIP**

(AFTER BENDING)



**(A & B) FULLY THREADED
BOLTS**

Designed by: WBW
Drawn by: GLD
Checked by: WBW
Previous Dwg. No. 616-2B

FRAME CONNECTION AND PANEL OVERLAP DETAILS

Note: Units shown in brackets [] are metric and are in millimeters (mm) unless other units are shown.



WYOMING DEPARTMENT
OF
TRANSPORTATION



12 FT [3.6 m] WOOD SNOW FENCE

STANDARD PLAN

STANDARD PLAN NUMBER
616-2C
SHEET 2 of 2
Issued by: ENGINEERING SERVICES
Date Issued: SEPTEMBER 2023