

**TYPE I** (TYP. DIVIDED HIGHWAYS)  
 \*TYPE IC = CRYSTAL REFLECTOR  
 TYPE IA = AMBER REFLECTOR

**TYPE II** (TYP. RAMPS & APPROACHES)  
 \*\*TYPE IC = CRYSTAL REFLECTOR  
 TYPE IIA = AMBER REFLECTOR

**TYPE III** (TYP. TWO-WAY ROADWAYS)

**TYPE IV** (TYP. HAZARD LOCATIONS & MEDIAN CROSSOVERS)

**TYPE V** (TYP. MEDIAN CROSSOVERS)

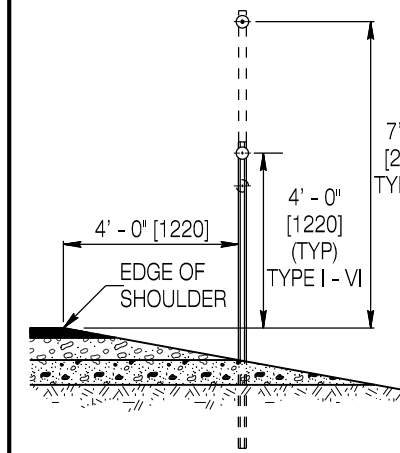
**TYPE VI** (TYP. MEDIAN CROSSOVERS)

**TYPE VII CRYSTAL** (TYP. SPECIAL APPLICATIONS)  
 PROVIDE ALTERNATE DELINEATOR POST (SECTION B-B) ONLY

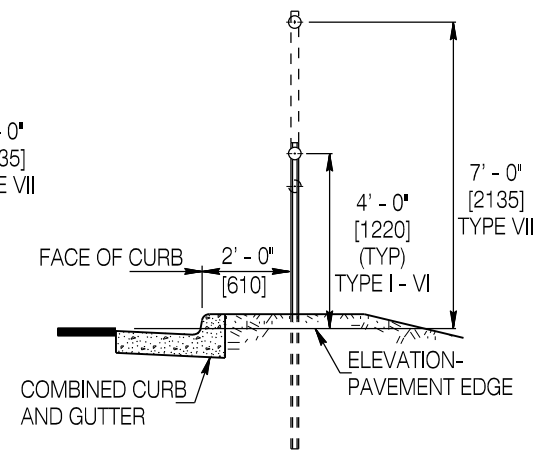
**TYPE VII AMBER** (TYP. SPECIAL APPLICATIONS)  
 PROVIDE ALTERNATE DELINEATOR POST (SECTION B-B) ONLY

**DELINEATOR TYPES**

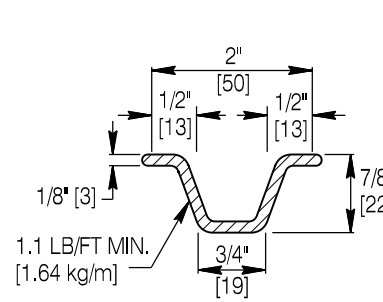
Orient delineators as shown above as viewed by traffic approaching in lane immediately adjacent to the delineator.



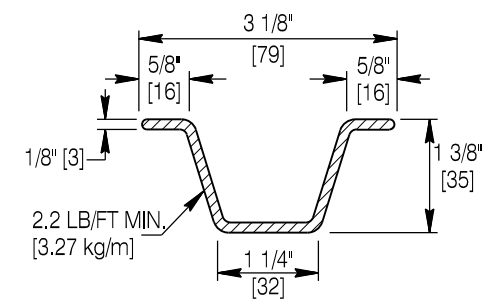
**TYPICAL PLACEMENT**



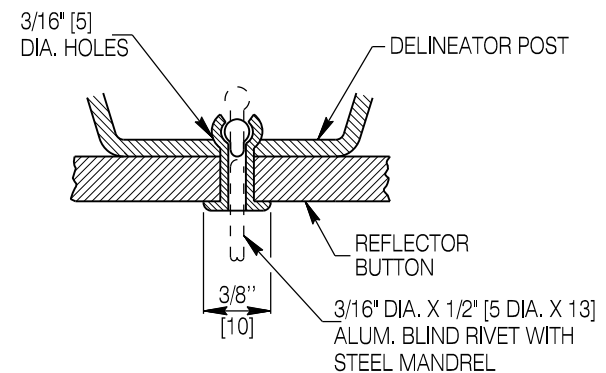
**TYPICAL PLACEMENT-RURAL SECTIONS WITH CURB & GUTTER W/O SIDEWALK**



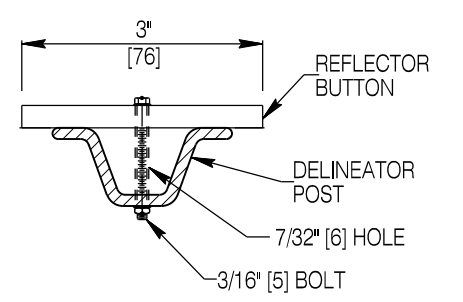
**STANDARD DELINEATOR POST**  
 SECTION A-A



**ALTERNATE DELINEATOR POST**  
 SECTION B-B



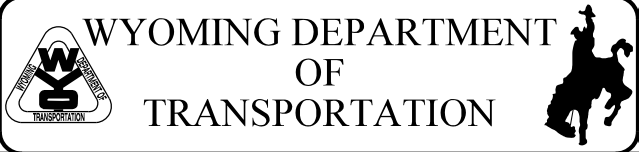
**TYPICAL NEAR SIDE REFLECTOR BUTTON ATTACHMENT DETAIL**



**TYPICAL FAR SIDE REFLECTOR BUTTON ATTACHMENT DETAIL**

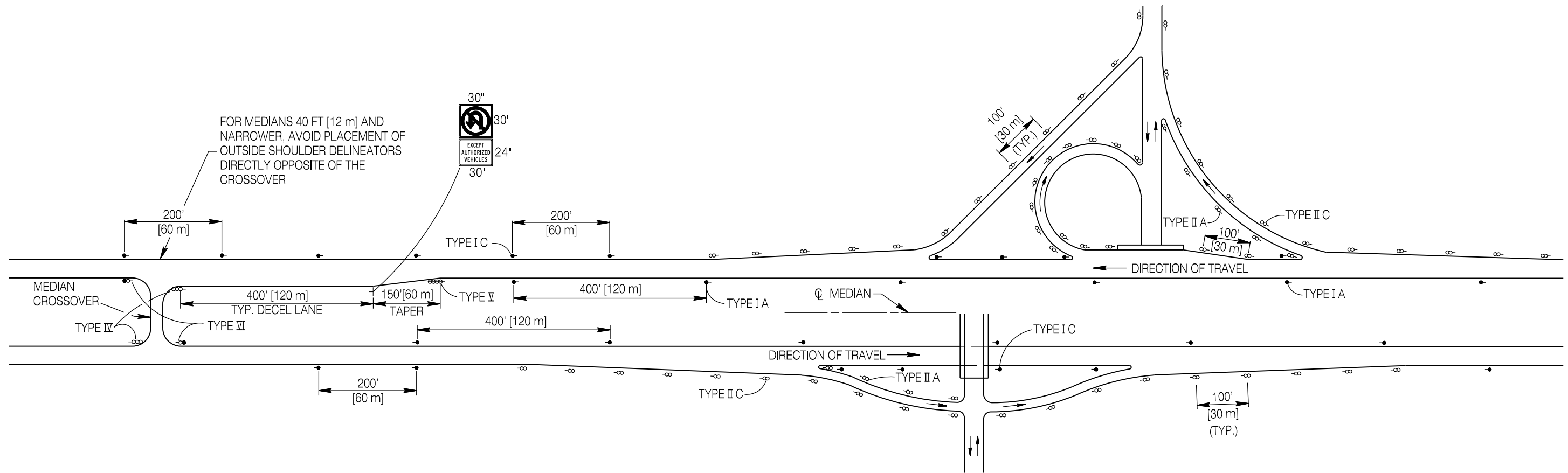
Designed by: TRAFFIC  
 Drawn by: JTG  
 Checked by: TRAFFIC  
 Previous Dwg. No. 702-1A

Note: Units shown in brackets [ ] are metric and are in millimeters (mm) unless other units are shown.



**DELINEATORS**  
 STANDARD PLAN

STANDARD PLAN NUMBER  
**702-1B**  
 SHEET 1 of 2  
 Issued by: TRAFFIC PROGRAM  
 Date Issued: OCTOBER, 2016

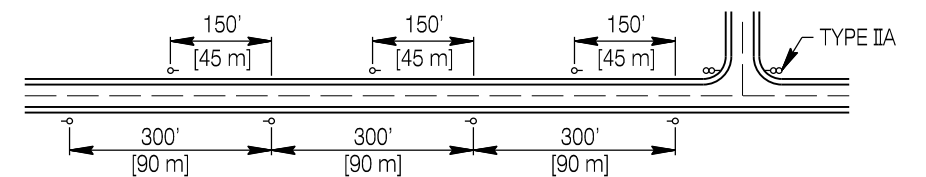


**LAYOUT-FOUR LANE DIVIDED HIGHWAY AND INTERCHANGE**

DELINEATOR SPACING ON HORIZONTAL CURVES ON TWO LANE TWO WAY HIGHWAYS				
CURVE (DEGREES [m])	* SPACING ON CURVE	* SPACING BEFORE AND AFTER CURVE		
		1ST PLACE	2ND PLACE	3RD PLACE
0°-1°45' [900 m < R ≤ ∞]	SPACE DELINEATORS SAME AS ON A TANGENT ROAD SECTION (300 FEET [90 m] SPACING, 150 FEET [45 m] STAGGERED)			
2°-2°45' [600 m < R ≤ 900 m]	150' [45 m]	200' [60 m]	200' [60 m]	200' [60 m]
3°-5°45' [300 m < R ≤ 600 m]	100' [30 m]	200' [60 m]	200' [60 m]	200' [60 m]
6°-19°45' [90 m < R ≤ 300 m]	50' [15 m]	100' [30 m]	200' [60 m]	200' [60 m]
20°-40° [R ≤ 90 m]	25' [7.5 m]	50' [15 m]	50' [15 m]	100' [30 m]

\* PLACE DELINEATORS DIRECTLY ACROSS FROM EACH OTHER TO CREATE A "GATE EFFECT" FOR ONCOMING MOTORISTS.

LEGEND	
TYPE I DELINEATOR - ●	(CRYSTAL OR AMBER)
TYPE II DELINEATOR - ⦶	(CRYSTAL OR AMBER)
TYPE III DELINEATOR - ◊	(CRYSTAL)
TYPE IV DELINEATOR - ⦶	(AMBER)
TYPE V DELINEATOR - ⦶	(AMBER)
TYPE VI DELINEATOR - ⦶	(AMBER WITH BLUE OR CRYSTAL)



**TWO LANE HIGHWAY**

Designed by: TRAFFIC  
 Drawn by: JTG  
 Checked by: TRAFFIC  
 Previous Dwg. No. 702-1A

Note: Units shown in brackets [ ] are metric and are in millimeters (mm) unless other units are shown.



**DELINEATORS**  
 STANDARD PLAN

STANDARD PLAN NUMBER  
**702-1B**  
 SHEET 2 of 2  
 Issued by: TRAFFIC PROGRAM  
 Date Issued: OCTOBER, 2016