



FAST FACTS

Wyoming crash data from 2020-2024 report that:

- ✓ Motorcycles account for less than 4% of registered vehicles, but motorcyclists account for over 15% of all traffic fatalities.
- ✓ Around 58% of all motorcyclist fatalities died in single-vehicle crashes.
- ✓ Over 48% of single-vehicle motorcycle fatalities were impaired at the time of the crash.
- ✓ Approximately 58% of all motorcyclist fatalities were not wearing a helmet.
- ✓ Speed was a potential contributing factor in nearly 53% of all fatal motorcycle crashes.
- ✓ Alcohol or drugs were involved in over 39% of all fatal motorcycle crashes.

CRASH CATEGORIES:

Critical Crashes – fatal and suspected serious injury crashes.

Serious Crashes – suspected minor injury and possible injury crashes.

Damage Crashes – no apparent injury and injury unknown crashes.

Highway Safety Report



Motorcycle Safety Awareness

Since the introduction of the motorcycle in 1885 it has grown to become a popular mode of transportation. Millions of people across the United States ride motorcycles – some as a primary or secondary form of transportation, and others as a leisure activity. Riding a motorcycle is among the riskier modes of transportation. Not only does operating a motorcycle require more physical skill and strength than driving a passenger vehicle, but motorcycles also lack a protective structure, offering the rider little to no protection in a crash and a higher probability of sustaining serious or fatal injuries. As a result, motorcyclists are overrepresented in traffic-related fatalities.

According to the National Highway Traffic Safety Administration (NHTSA), over the last 10 years motorcyclist fatalities have remained at 14% of all traffic fatalities, despite only representing 3% of all registered motor vehicles. In Wyoming, over the last 10 years, motorcyclist fatalities account for just over 15% of all traffic fatalities while motorcycles typically account for less than 4% of all registered motor vehicles.

Motorcyclists are considered vulnerable road users due to their high risk of injury if struck by a motor vehicle. They have little or no protection to absorb and diffuse the transfer of energy created at impact, which is why motorcyclists experience a higher proportion of fatal injuries when a crash occurs. Personal protective equipment is a critical component of keeping motorcyclists safe.

Head injury is a leading cause of death in motorcycle crashes. Wearing DOT-compliant motorcycle helmets save lives and reduce injuries. In Wyoming, during the most recent five-year period (2020-2024), 58% of motorcycle fatalities were not wearing a helmet at the time of the crash. Around 54% of motorcyclist suspected serious injuries were not wearing a helmet at the time of the crash.

Proper riding gear also plays an important role in reducing injury severity. Arms and legs should be completely covered, ideally with gear designed specifically for motorcyclists. Boots or shoes should be high enough to cover ankles for extra support and soles should be made of hard, durable slip-resistant material. Gloves allow for a better grip and help protect your hands in the event of a crash. Wearing brightly colored clothing with reflective material will help make motorcyclists more visible to the drivers of other vehicles.

Motorcycle Safety Awareness

Before Every Ride

Make sure you're wearing protective clothing:

- ✓ DOT-compliant helmet
- ✓ Full-coverage jackets
- ✓ Full-fingered gloves
- ✓ Riding pants
- ✓ Riding boots

NHTSA



Proper motorcycle maintenance is also important to help ensure a safe ride. This includes making sure tires and wheels have proper inflation and safe rotation, the body condition is sound, the controls, horn, and lights work correctly, chains and cables are intact with appropriate lubrication, and fluids are at proper levels.

BY THE NUMBERS

WYDOT Crash Data June 1, 2025 vs. (June 1, 2024)

Fatalities: 39 (31)

Serious Injuries: 142 (150)

**Alcohol-Involved
Fatalities: 10 (6)**

**Bicycle-Involved
Fatalities: 0 (0)**

**CMV-Involved
Fatalities: 14 (4)**

**Drug-Involved
Fatalities: 3 (5)**

**Motorcycle-Involved
Fatalities: 2 (4)**

**Pedestrian-Involved
Fatalities: 4 (1)**

**Speed-Related
Fatalities: 14 (14)**

Data current as of 06/10/2025



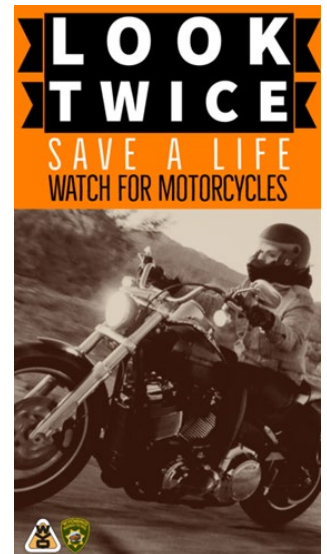
**5300 Bishop Blvd.
Cheyenne, WY 82009
www.dot.state.wy.us**

One significant way to reduce the chances of injury and death for motorcyclists is to participate in a rider education and training course that covers the essential skills a rider needs to safely operate a motorcycle. WYDOT's [Motorcycle Safety Program](#) offers basic rider training as well as skills practice at locations across the state. Classes are taught by Motorcycle Safety Foundation certified instructors with a focus on common factors found to cause crashes and teaches riders skills and techniques that may help prevent crashes. Getting trained and getting licensed are critical steps to safely operate a motorcycle.

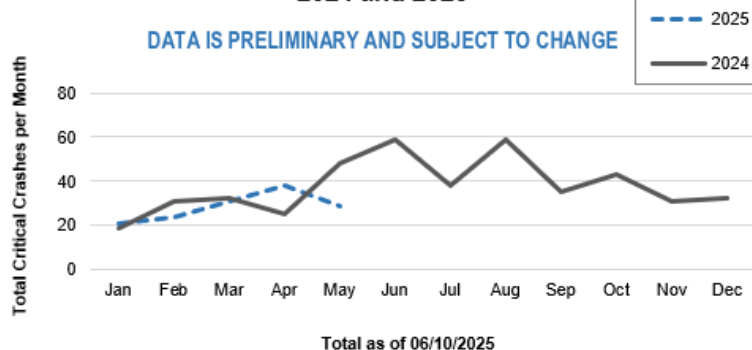
Each year motorcyclists are overrepresented in traffic crashes. Two leading contributors to this are speed and impairment. Speeding increases both the frequency and severity of crashes. In Wyoming, over the last five years, speed was a potential contributing factor in nearly 53% of all fatal motorcycle crashes. Impaired motorcycle operation is also a significant contributing factor in motorcycle crashes. Alcohol or drugs were involved in over 39% of all fatal motorcycle crashes.

Around 58% of motorcyclist fatalities died in single-vehicle crashes. Half (50%) of these motorcyclist fatalities were speeding. Over 48% of these single-vehicle motorcycle fatalities were impaired at the time of the crash.

May typically marks the beginning of riding season for many motorcyclists. Motorcycle Safety Awareness Month is held annually in May to promote safe driving behaviors for both motorcyclists *and* drivers. Cooperation from all road users will help reduce the number of fatalities and injuries on our roadways. By consistently following safe driving and riding practices and sharing them with others, all motorists can help reduce the number of motorcyclist fatalities. To keep everyone safe, NHTSA urges drivers and motorcyclists to share the road and be alert, and reminds motorcyclists to get licensed, seek training, wear proper protective equipment (including DOT-compliant motorcycle helmets), make themselves visible, watch their speed, and always ride sober.



Monthly Critical Crash Comparison: 2024 and 2025



WYDOT Completed Safety Treatment Locations (Active) as of June 10, 2025

District	Count	Annual Lifecycle Cost	Average Benefit to Cost	Annual Critical Crash Reduction
1	294	\$ 128,229.00	166.83	8.1
2	318	\$ 271,726.00	59.77	5.19
3	647	\$ 306,645.00	86.34	10.02
4	527	\$ 107,932.00	93.47	6.3
5	59	\$ 14,309.00	205.46	0.53
State	1,845	\$ 828,841.00	100.44	30.14