



## FAST FACTS

*Wyoming crash data from 2017-2021 report that:*

- ✓ Nearly 11% of all traffic crashes involved a large truck.
- ✓ Large truck-involved crashes accounted for 15.5% of all critical crashes, including 18.5% of fatal crashes and 18.9% of fatalities.
- ✓ The majority of large-truck involved crashes involved a commercial motor vehicle (95.6%).
- ✓ Most large trucks involved in crashes were classified as “heavy” (GVWR >26K LBS).
- ✓ While collision with a non-fixed object accounted for 50% of large truck-involved crashes, 37% were non-collision crashes.
- ✓ Most large truck-involved crashes occurred on an interstate (61.1%), with I-80 experiencing 81.6% of interstate crashes.

**CRASH CATEGORIES:**

Critical Crashes – fatal and suspected serious injury crashes.  
 Serious Crashes – suspected minor injury and possible injury crashes.  
 Damage Crashes – no apparent injury and injury unknown crashes.

# Highway Safety Report



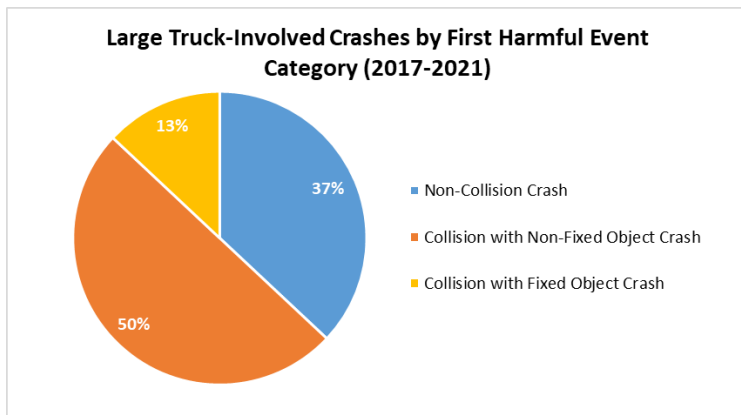
## Large Truck-Involved Crashes

The Federal Motor Carrier Safety Administration (FMCSA) classifies trucks with a gross vehicle weight rating (GVWR) greater than 10,000 pounds as a “large vehicle”. Large truck traffic is commonplace on Wyoming roadways. Interstate 80 through southern Wyoming is one of the busiest commercial motor vehicle (CMV) corridors in the United States. The varied terrain in Wyoming includes mountain passes that can reduce truck speeds to a crawl in addition to challenging weather conditions that often include winds that can topple light trucks. This means large trucks, such as tractor-trailer combinations, on Wyoming roadways can present a hazard for motorists.

In Wyoming, during the most recent five-year period (2017-2021), 7,599 traffic crashes involved large trucks, which accounts for nearly 11% of all traffic crashes. These large truck-involved crashes included 336 critical crashes (15.5% of all critical crashes), 1,136 serious crashes (10.7% of all serious crashes), and 6,127 damage crashes (10.7% of all damage crashes). Large truck-involved crashes resulted in 117 fatal injuries, 303 suspected serious injuries, 937 suspected minor injuries, and 686 possible injuries. When looking at fatal crashes specifically, large truck-involved crashes account for 18.5% of fatal crashes and 18.9% of fatalities.

The majority of large-truck involved crashes involved a commercial motor vehicle (95.6%). Most large trucks involved in traffic crashes were classified as “heavy” with a GVWR of greater than 26,000 pounds (89.4%), while 10.6% of large trucks were classified as “medium” with a GVWR of 10,001 – 26,000 pounds.

Most large truck-involved crashes were collisions with a non-fixed object (50%), with another motor vehicle on the roadway accounting for 87.5% of these crashes. Non-collision crashes accounted for 37%



of large truck-involved crashes, with 45% of these classified as jackknife crashes and 38.7% classified as overturn/rollover crashes (30.5% of these being blow-over crashes). Only 13% of large truck-involved crashes had a collision with a fixed object as the first harmful event, with 19.3% striking a guardrail, 13.2% striking a cable barrier, and 13.2% striking a fence.

## BY THE NUMBERS

### WYDOT Crash Data February 1, 2023 vs. (February 1, 2022)

**Fatalities: 16 (3)**

**Serious Injuries: 38 (33)**

**Alcohol-Involved  
Fatalities: 1 (0)**

**Bicycle-Involved  
Fatalities: 0 (0)**

**CMV-Involved  
Fatalities: 11 (0)**

**Drug-Involved  
Fatalities: 6 (2)**

**Motorcycle-Involved  
Fatalities: 0 (0)**

**Pedestrian-Involved  
Fatalities: 1 (0)**

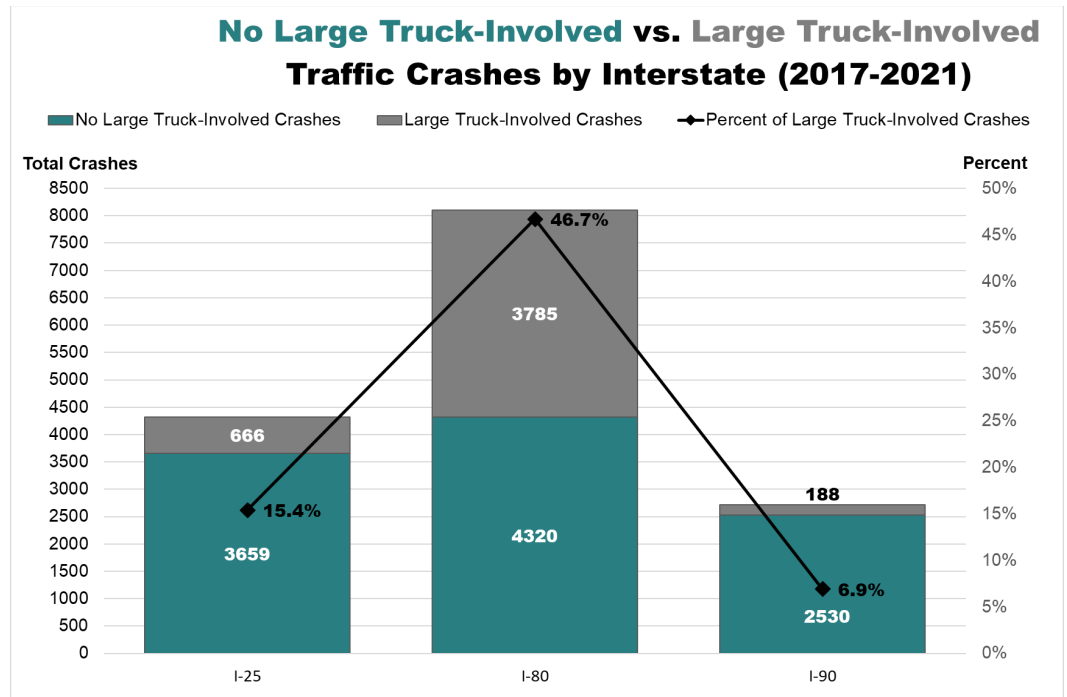
**Speed-Related  
Fatalities: 11 (3)**

Data current as of 02/15/2023



5300 Bishop Blvd.  
Cheyenne, WY 82009  
www.dot.state.wy.us

The majority of large truck-involved crashes occurred on Wyoming interstates, which accounted for 61.1% of all large truck-involved crashes. Interstate 80 experienced the largest number of large-truck involved interstate crashes at 81.6% of all large truck-involved interstate crashes. Nearly half (46.7%) of all Interstate 80 crashes involved a large truck, compared to 15.4% of all Interstate 25 crashes and 6.9% of all Interstate 90 crashes.



Wyoming is always exploring new ways to ensure commerce can move freely within and through the state while maintaining a safe environment for motorists, including education campaigns to raise awareness of the difficulties and hazards posed by commercial motor vehicles on the roadways.

