



## FAST FACTS

*Wyoming crash data from 2017-2021 report that:*

- ✓ Around 6% of all crashes were impaired crashes.
- ✓ Impairment was a contributing factor in approximately 27.4% of all critical crashes.
- ✓ Nearly 40.6% of all fatal crashes were impaired crashes, resulting in 257 fatalities.
- ✓ The majority of impaired crashes involved alcohol use only (74.1%).
- ✓ BAC levels for the majority of alcohol-impaired drivers (44.3%) indicated severe intoxication and impairment.
- ✓ The most common drug indicated by testing for drug-impaired drivers was marijuana.

**Blood Alcohol Concentration (BAC):**  
The concentration of alcohol in a person's blood that negatively influences their ability to function normally.

**CRASH CATEGORIES:**

- Critical Crashes – fatal and suspected serious injury crashes.
- Serious Crashes – suspected minor injury and possible injury crashes.
- Damage Crashes – no apparent injury and injury unknown crashes.

# Highway Safety Report



## Impaired Crashes

Impaired crashes are crashes in which law enforcement documented at least one driver or non-motorist directly involved in the crash had used alcohol and/or drugs, or alcohol and/or drug use were suspected and test results are pending/unknown. Any amount of alcohol indicated by testing qualifies as alcohol involved. Any positive test indication for illegal or controlled prescription medications qualifies as drug involved. An impaired person may have used alcohol, drugs, or both.

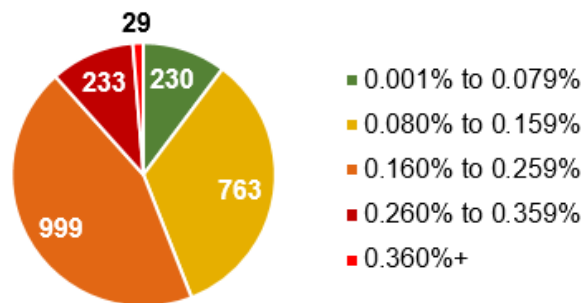
In Wyoming, during the most recent five-year period (2017-2021), 4,145 traffic crashes were impaired crashes, which accounts for nearly 6% of all crashes. These impaired crashes included 592 critical crashes (27.4% of all critical crashes), 1,195 serious crashes (11.3% of all serious crashes), and 2,358 damage crashes (4.1% of all damage crashes). Impaired crashes resulted in 257 fatal injuries, 483 suspected serious injuries, 1,080 suspected minor injuries, and 625 possible injuries.

When looking at critical crashes over this five-year period, nearly 40.6% of fatal crashes (219) and 23% of suspected serious injury crashes (373) were impaired crashes.

For 2017-2021, the majority of impaired crashes (74.1%) involved alcohol use only. Around 12.7% of impaired crashes involved drug use only. Approximately 13.2% of impaired crashes involved the use of both alcohol and drugs.

In Wyoming, drivers with a blood alcohol concentration (BAC) of 0.08% or higher are considered impaired by law. Over the last five years, the majority (44.3%) of confirmed alcohol-impaired drivers had a BAC between 0.160-0.259%, indicating severe intoxication and impairment. Approximately 33.9% had a BAC between 0.080-0.159%, indicating substantial intoxication and impairment. In addition, 11.6% had a BAC of 0.260% and higher, which can lead to loss of consciousness, coma, and possible death. About 10.2% of confirmed alcohol-impaired drivers had a BAC below the legal limit. Around 36.5% of suspected alcohol-impaired drivers had unknown BAC test results.

### Alcohol-Impaired Driver's BAC Results for the Years 2017-2021



Over the last five years, 34.8% of drivers suspected of drug use tested positive, while only 6.4% tested negative. The remaining 58.8% of drivers suspected of drug use had unknown drug test results.

Of the confirmed drug-impaired drivers with a positive drug test result, 42.4% did not have the type of drug detected by the drug test reported.

## BY THE NUMBERS

### WYDOT Crash Data August 1, 2022 vs. (August 1, 2021)

**Fatalities: 44 (61)**

**Serious Injuries: 247 (283)**

**Alcohol-Involved  
Fatalities: 11 (20)**

**Bicycle-Involved  
Fatalities: 0 (0)**

**CMV-Involved  
Fatalities: 8 (7)**

**Drug-Involved  
Fatalities: 2 (12)**

**Motorcycle-Involved  
Fatalities: 4 (10)**

**Pedestrian-Involved  
Fatalities: 4 (6)**

**Speed-Related  
Fatalities: 22 (29)**

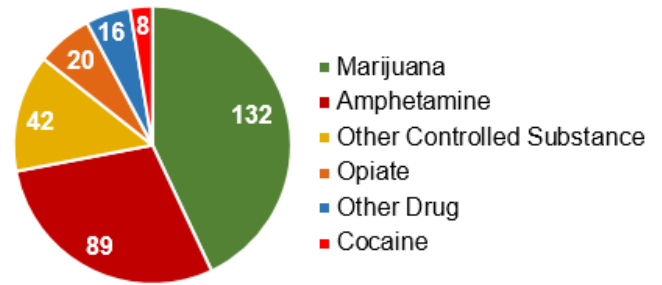
Data current as of 08/10/2022



5300 Bishop Blvd.  
Cheyenne, WY 82009  
www.dot.state.wy.us

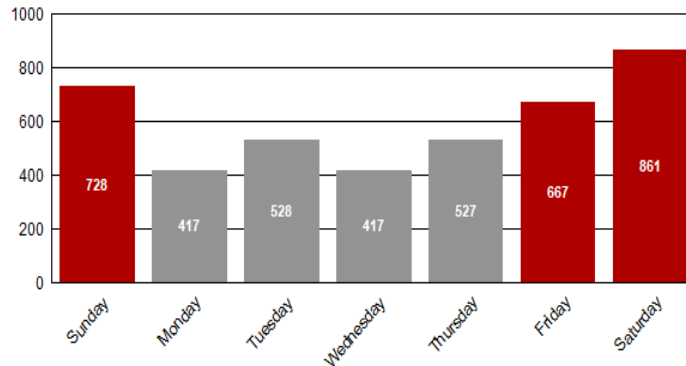
While the consumption of marijuana remains illegal in Wyoming, the majority of drug-impaired drivers with a positive drug test result that included the type of drug detected had marijuana in their system at the time of the crash (43%). The next most common drug detected was Amphetamine, with 29% of drug-impaired drivers with an identifiable drug type having this drug in their system at the time of the crash.

### Drug-Impaired Driver's Drug Results for the Years 2017-2021



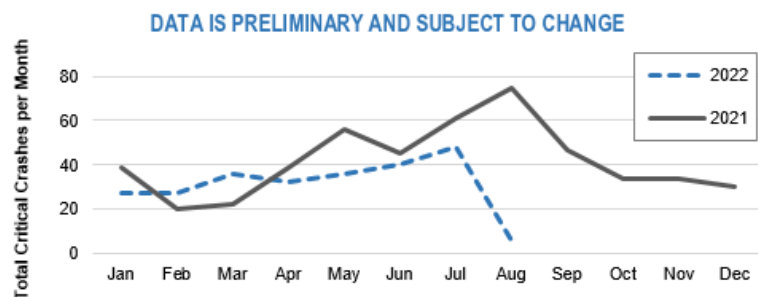
Most impaired drivers were male (73.7%), with females accounting for 24.7%, and unknown gender 1.6%. Male drivers aged 21-44 years old accounted for 48.1% of impaired drivers, with most (19.7%) being 26-34 years old. The majority of impaired drivers involved in fatal crashes were male (81.8%), with most being 26-34 years old and 35-44 years old, with each group accounting for 18.2%.

### Impaired Crashes by Day of the Week 2017-2021



The majority of impaired crashes occurred Friday through Sunday (54.4%), with Saturday having the highest number of impaired crashes out of all of the days of the week (20.8%). Most impaired crashes occurred between the hours of 5:00PM and 3:00AM (64.7%) with a significant number of impaired crashes occurring between the hours of 8:00PM and 11:00PM (21.3%). The highest number of crashes occurred between 9:00-9:59PM (7.8%).

### Monthly Critical Crash Comparison: 2021 and 2022



Total as of 08/10/2022

### WYDOT Completed Safety Treatment Locations (Active) as of August 10, 2022

District	Count	Annual Lifecycle Cost	Average Benefit to Cost	Annual Critical Crash Reduction
1	269	\$ 83,682.00	217.92	9.96
2	205	\$ 80,237.00	39.37	4.35
3	496	\$ 236,453.00	61.61	6.77
4	420	\$ 72,115.00	97.49	4.96
5	82	\$ 25,478.00	292.66	1.13
<b>State</b>	<b>1,472</b>	<b>\$ 497,965.00</b>	<b>110.19</b>	<b>27.17</b>