



FAST FACTS

Wyoming crash data from 2019-2023 report that:

- ✓ 40 traffic crashes directly involved the loss of a vehicle's load.
- ✓ 1,091 crashes involved a non-fixed object on the roadway or an object on the roadway set in motion by another vehicle.
- ✓ The majority of crashes related to a vehicle's loss of load are property damage only crashes.

USEFUL TIPS

- ✓ Place lighter items below heavier items to keep them in place.
- ✓ Securely fasten large and heavy items directly to your vehicle.
- ✓ Tie down items using rope, netting, straps, or chains.
- ✓ Add extra protection by covering the entire load with a tarp or netting.
- ✓ Make sure any covering is securely tied down.
- ✓ Don't overload vehicles or trailers.
- ✓ Double-check to be sure the load is secure before departure and re-check at all roadside stops.

Highway Safety Report



Secure Your Load for Safer Roads



June 6th is designated "Secure Your Load Day", an annual national safety campaign to increase public awareness about the dangers of an unsecured load and to remember those injured or killed because of unsecured loads. According to the National Highway Transportation Safety Administration (NHTSA), in 2022 there were 895 deaths, 17,203 injuries, and 98,502 property damage crashes nationwide caused by unsecured loads.

Wyoming Statute 31-5-228 (Loads on Vehicles) states "No vehicle shall be driven or moved on any highway unless the vehicle is so constructed or loaded as to prevent any of its load from dropping, sifting, leaking or otherwise escaping therefrom." Failure to secure your load can result in a fine, imprisonment, or both (WY Stat § 6-3-204, WY Stat § 31-5-1201). A load is secure when nothing in/on the vehicle or trailer (including any covering used) can slide, shift, or fall onto the roadway, or become airborne. Secure loads help drivers avoid any associated penalties, but more importantly, they keep roadways clean and safe.

In Wyoming, during the most recent five-year period (2019-2023), 40 traffic crashes involved the loss of a vehicle's load which immediately resulted in a crash. All 40 crashes were the result of an object being thrown or falling from one vehicle and striking another vehicle. Single vehicles can also experience cargo/equipment loss or shift resulting in damage to the vehicle transporting the cargo/equipment, the cargo/equipment itself, or injury to the transporting vehicle's occupants.

The majority of these 40 traffic crashes (37, 92.5%) were property damage only crashes. Three (3, 7.5%) were injury crashes with two (2) suspected minor injuries and one (1) possible injury.

In addition, during this same period, 1,091 crashes involved a non-fixed object on the roadway or an object on the roadway set in motion by another vehicle. Some of these crashes could involve objects that had come to rest on the roadway after falling from a transporting vehicle.



The majority of these crashes (981, 89.9%) were property damage only crashes. However, there was a fatal crash and 109 injury crashes with one (1) fatality, 11 suspected serious injuries, 75 suspected minor injuries, and 44 possible injuries.

Securing your load is quick and easy. It only takes a few minutes and basic supplies to properly secure a load.

BY THE NUMBERS

WYDOT Crash Data June 1, 2024 vs. (June 1, 2023)

Fatalities: 25 (58)

Serious Injuries: 132 (168)

**Alcohol-Involved
Fatalities: 5 (12)**

**Bicycle-Involved
Fatalities: 0 (0)**

**CMV-Involved
Fatalities: 4 (21)**

**Drug-Involved
Fatalities: 3 (14)**

**Motorcycle-Involved
Fatalities: 3 (2)**

**Pedestrian-Involved
Fatalities: 1 (7)**

**Speed-Related
Fatalities: 9 (33)**

Data current as of 06/05/2024



5300 Bishop Blvd.
Cheyenne, WY 82009
www.dot.state.wy.us

How to Secure a Load:

1. Place lighter items below heavier items to keep them in place. Securely fasten the heavy items directly to your vehicle.
2. Tie down items using rope, netting, straps, or chains. Securely fasten large items directly to your vehicle.
3. Add extra protection by covering the entire load with a tarp or netting. Make sure that any covering is securely tied down.

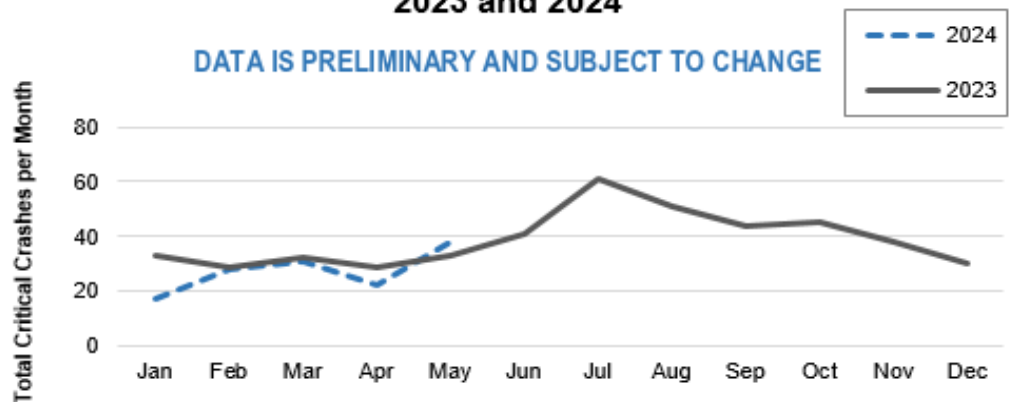
Important Reminders:

- Don't overload vehicles or trailers.
- Double-check to be sure the load is secure before departure and re-check the load at all roadside stops (i.e. gas stations, food stops, overnight stays).
- Speed, weight, and gravity are not load securing devices. Ropes, straps, and netting are load securing devices.

Driving with an unsecured load is both illegal and extremely dangerous. Most drivers have experienced a rock hitting their windshield. Imagine if that rock had been a hammer, piece of lumber, or a piece of furniture. Even the smallest item falling from a vehicle can be deadly. Don't put other motorists' lives at risk. Properly secured loads prevent crashes, injuries, and save lives. Robin Abel, founder of Secure Your Load offers this advice: "Secure your load as if everyone you love is driving in the car behind you."



Monthly Critical Crash Comparison: 2023 and 2024



Total as of 06/05/2024

WYDOT Completed Safety Treatment Locations (Active) as of June 05, 2024

District	Count	Annual Lifecycle Cost	Average Benefit to Cost	Annual Critical Crash Reduction
1	291	\$ 120,582.00	247.13	14.01
2	307	\$ 269,699.00	162.85	5.81
3	644	\$ 291,221.00	85.89	11.2
4	524	\$ 95,379.00	255.95	8.17
5	65	\$ 24,365.00	358.16	0.98
State	1,831	\$ 801,246.00	182.75	40.18