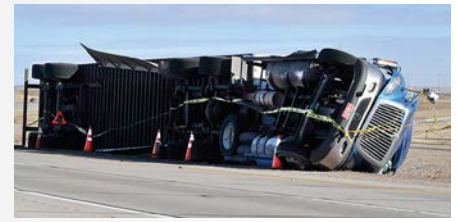




Highway Safety Report



FAST FACTS

Wyoming crash data from 2016-2020 report that:

- ✓ Wyoming averages around 114 reported blow-over crashes per year.
- ✓ Most blow-over crashes occur along the major travel corridors of I-25 and I-80.
- ✓ Winter months had more blow-over crashes, with the month of February having the highest number recorded.
- ✓ Heavy Trucks (> 26,000 lbs) were the most common vehicle type to experience a blow-over crash.
- ✓ Pickup Trucks experienced a high number of blow-over crashes, with 80% of these motor vehicles pulling a trailer at the time of the crash.

CRASH CATEGORIES:

Critical Crashes – fatal and suspected serious injury crashes.

Serious Crashes – suspected minor injury and possible injury crashes.

Damage Crashes – no apparent injury and injury unknown crashes.

Blow-Over Crashes

Overturn/Rollover crashes that occur during a severe wind weather event are a common problem on Wyoming highways. In Wyoming, during the most recent five-year period (2016-2020), 568 blow-over crashes were reported, averaging around 114 blow-over crashes per year. These blow-over crashes included 16 critical crashes, 148 serious crashes, and 404 damage crashes and resulted in 1 fatal injury, 16 suspected serious injuries, 119 suspected minor injuries, and 67 possible injuries.

Wyoming often experiences powerful wind gusts, which pose a considerable problem for motorists on the major travel corridors of I-25 and I-80, especially for those with light or high profile vehicles susceptible to these wind gusts. Figure 1 shows the location of blow-over crashes reported for the years 2016-2020. The majority of blow-over crashes occur on I-25 and I-80, and historical blow-over crash “hot spots” include Wyoming Hill (I-25 MP 3-5), Bordeaux (I-25 MP 60-80), Arlington (I-80 MP 272-274), Cooper Cove-Strouss Hill (I-80 MP 278-284), and Casper’s Outer Drive (HWY 258 near I-25).



FIGURE 1 – Reported Blow-Over Crashes 2016-2020

During the winter months, the state of Wyoming tends to experience an increase in severe wind weather events with more extended periods of wind in which wind speeds often reach 30 to 40 MPH with wind gust speeds of 50

BY THE NUMBERS

WYDOT Crash Data December 1, 2021 vs. (December 1, 2020)

Fatalities: 97 (118)

Serious Injuries: 422 (410)

**Alcohol-Involved
Fatalities: 27 (36)**

**Bicycle-Involved
Fatalities: 0 (0)**

**CMV-Involved
Fatalities: 12 (21)**

**Drug-Involved
Fatalities: 12 (27)**

**Motorcycle-Involved
Fatalities: 17 (19)**

**Pedestrian-Involved
Fatalities: 10 (7)**

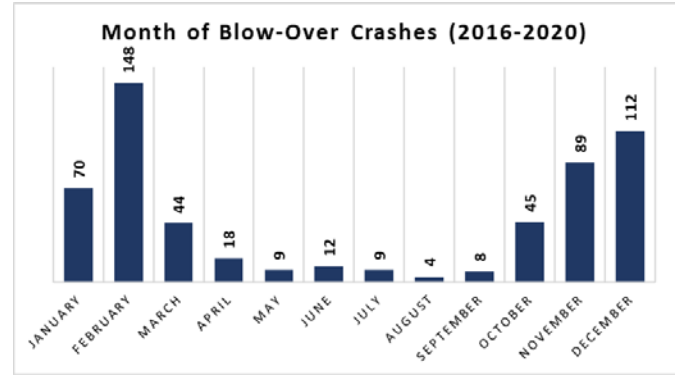
**Speed-Related
Fatalities: 40 (45)**

Data current as of 12/10/2021



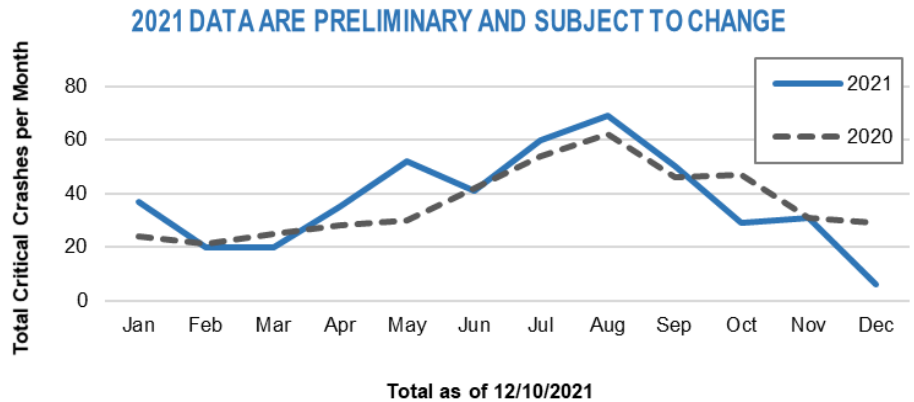
5300 Bishop Blvd.
Cheyenne, WY 82009
www.dot.state.wy.us

to 60 MPH. Wyoming has also experienced occasional hurricane force wind gusts, or wind gusts in excess of 74 MPH, and sometimes reaches wind gusts that would be classified as a Category 2 hurricane (96 to 110 MPH). February experiences the most blow-over crashes (148, 26%), followed by December (112, 20%), November (89, 16%), and January (70, 12%).



During severe wind weather events, blow-over crashes pose a considerable risk to the safety of all motor vehicles traveling on the roadway. Drivers of light or high-profile vehicles are particularly susceptible to experiencing loss of control and/or blow-over which may cause damage to their motor vehicle, other motor vehicles, and may produce debris on the highway resulting in road closure. The type of motor vehicles most commonly involved in a blow-over crash for the years 2016-2020 were heavy trucks (>26,000lbs) at 45% of vehicles involved and Pickup Trucks at 36%. Of the Pickup Trucks involved in a blow-over crash, 80% were pulling a non-commercial trailer (i.e. camper, utility trailer) at the time of the crash.

Monthly Critical Crash Comparison: 2020 and 2021



WYDOT Completed Safety Treatment Locations (Active) as of December 10, 2021

District	Count	Annual Lifecycle Cost	Average Benefit to Cost	Annual Critical Crash Reduction
1	186	\$ 67,756.00	226.92	7.26
2	201	\$ 79,003.00	20.22	3.87
3	472	\$ 235,319.00	62.64	6.63
4	348	\$ 66,348.00	93.36	4.03
5	82	\$ 25,478.00	292.66	1.13
State	1,289	\$ 473,904.00	102.66	22.92