


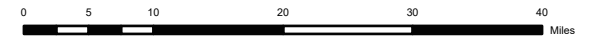
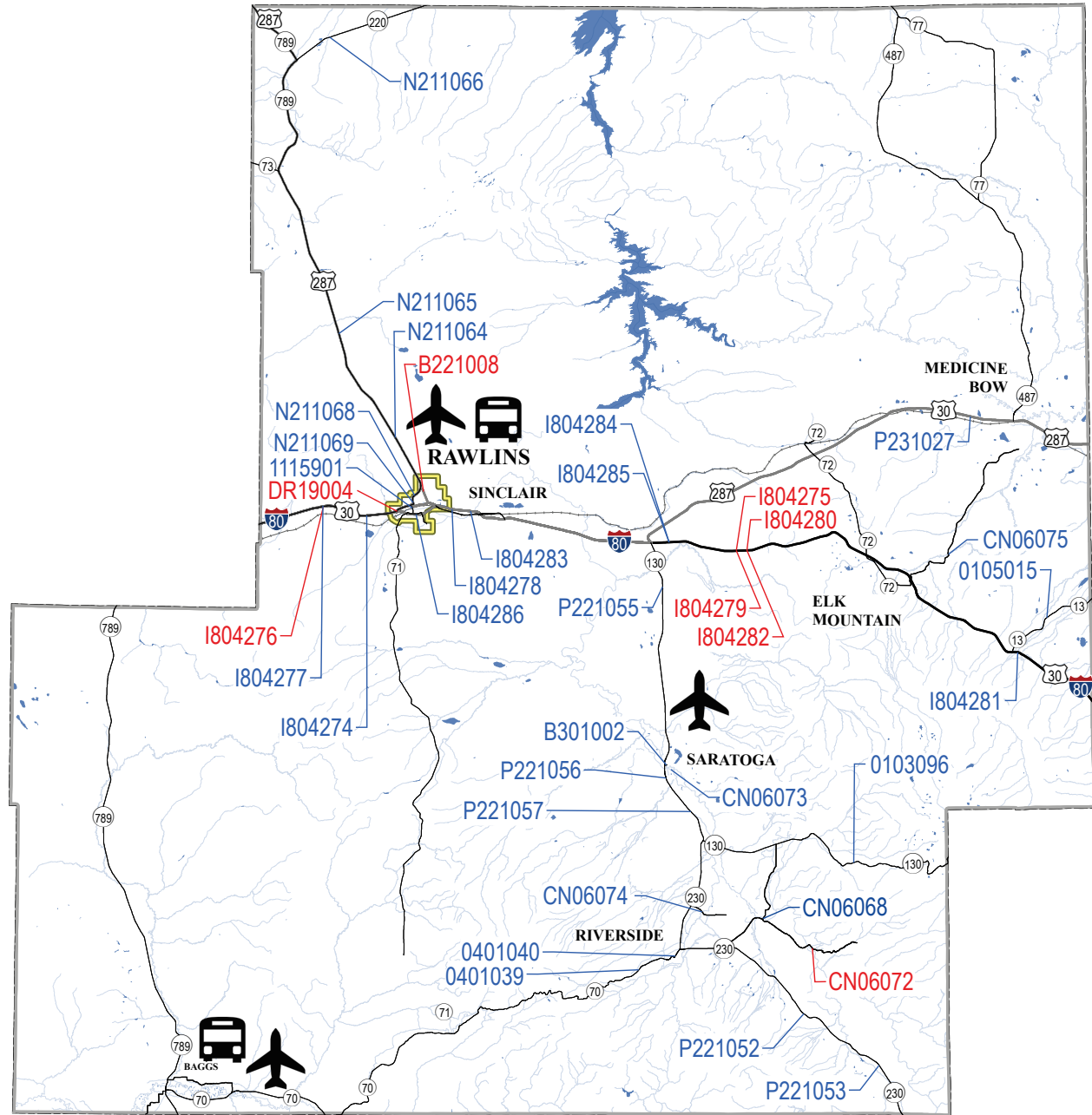
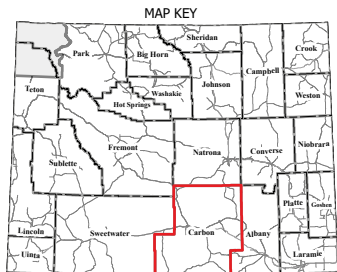


CARBON COUNTY

Key to FY 2026 STIP

- 2026
- FUTURE
-  AERONAUTICS
-  TRANSIT
-  URBAN BOUNDARY



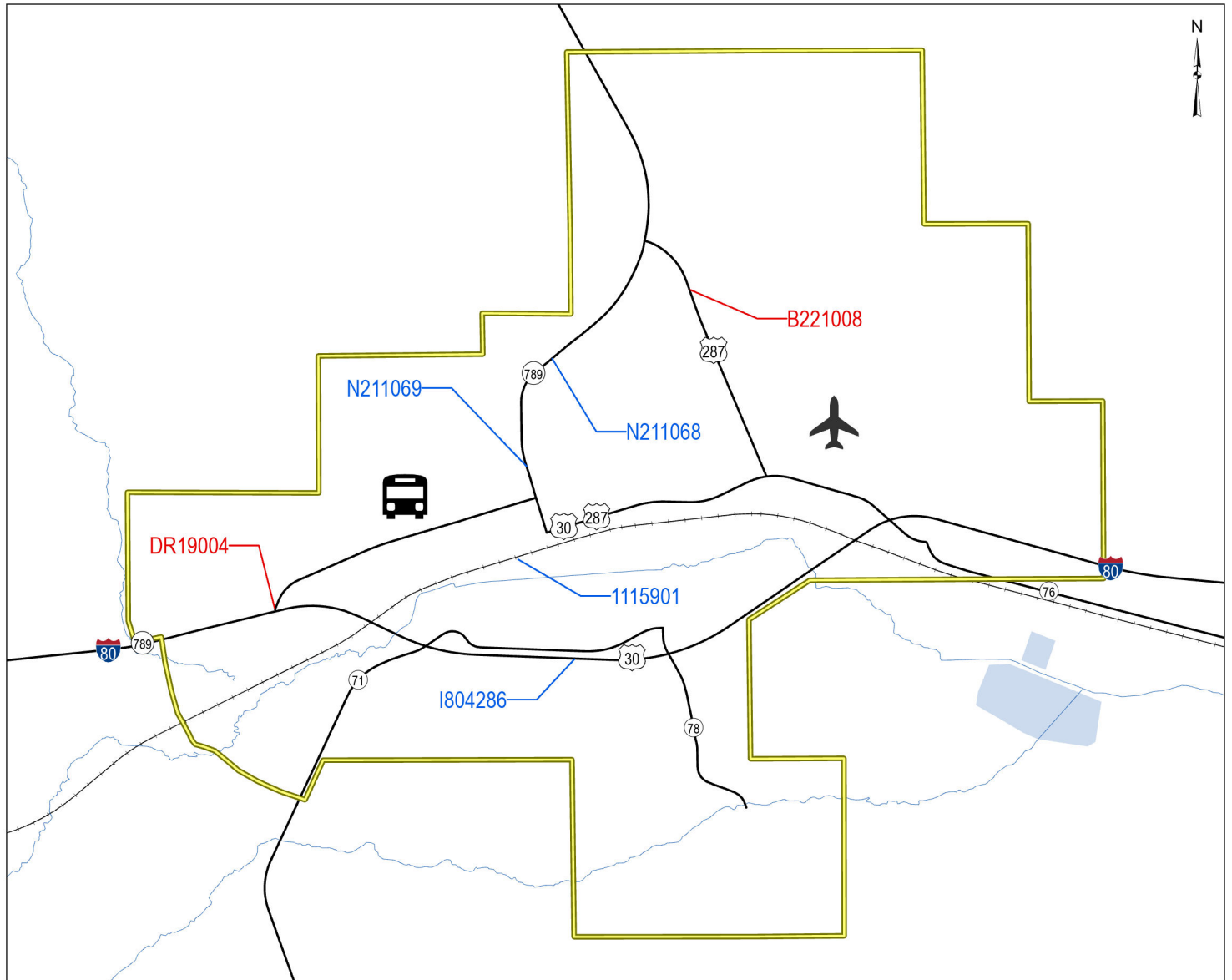
RAWLINS

INSET

CARBON COUNTY

Key to FY 2026 STIP

- 2026
- FUTURE
-  AERONAUTICS
-  TRANSIT
-  URBAN BOUNDARY





Wyoming Department of Transportation
5300 Bishop Blvd
Cheyenne, WY 82009

STATE TRANSPORTATION IMPROVEMENT PROJECTS ENGINEERING & CONSTRUCTION

WYCN002B

Carbon County

Transportation Projects

Fiscal Year: 2026

Trans Comm Dist	Project		General Location Detail Location	Begin RM	End RM	Length	Character of Work	Cost \$1,000						
								PE FY	PE	CE & CON	TOTAL	FED	ST	OTH
2	STPU-RW	B221008	RAWLINS HIGLEY BOULEVARD	1.87	1.87	0.00	COMMUNITY DEVELOPMENT TO INCLUDE PEDESTRIAN UNDERPASS	2019	180	2,424	2,603	2,356	0	248
2	HI-BFP	CN06072	CARBON COUNTY COUNTY ROAD 660 OVER NORTH PLATTE RIVER STRUCTURE NO. DMK	9.20	9.20	0.00	BRIDGE REPLACEMENT		350	3,773	4,123	4,123	0	0
2	DR	DR19004	RAWLINS SPRUCE STREET SPANNING I-80 STRUCTURE NO. IYI	211.75	211.75	0.00	STRUCTURE REPAIR		15	158	173	0	173	0
2	NHPPI	I804275	LARAMIE TO RAWLINS DANA RIDGE SECTION I-80 WESTBOUND LANE	240.00	245.90	5.90	PAVEMENT REHABILITATION TO INCLUDE MILL, OVERLAY AND WEARING COURSE	2022	526	11,206	11,732	10,883	849	0
2	NHPPI	I804276	RAWLINS TO CRESTON JUNCTION I-80 EASTBOUND LANE	199.05	210.97	11.92	PAVEMENT REHABILITATION TO INCLUDE MILL AND OVERLAY		837	18,320	19,157	17,761	1,396	0
2	NHPPI	I804279	RAWLINS TO LARAMIE I-80 EASTBOUND LANE	240.00	245.90	5.90	PAVEMENT REHABILITATION TO INCLUDE MILL AND OVERLAY		477	9,537	10,014	9,289	725	0



Wyoming Department of Transportation
 5300 Bishop Blvd
 Cheyenne, WY 82009

STATE TRANSPORTATION IMPROVEMENT PROJECTS ENGINEERING & CONSTRUCTION

WYCN002B

Carbon County

Transportation Projects

Fiscal Year: 2026

Trans Comm Dist	Project		General Location Detail Location	Begin RM	End RM	Length	Character of Work	Cost \$1,000						
								PE FY	PE	CE & CON	TOTAL	FED	ST	OTH
2	NHPP	I804280	LARAMIE TO RAWLINS I-80 STRUCTURE NO. AUV	243.89	243.89	0.00	BRIDGE REPLACEMENT		241	1,789	2,031	1,883	147	0
2	HI-BFP	I804282	LARAMIE TO RAWLINS I-80 STRUCTURE NO. AUX	243.89	243.89	0.00	BRIDGE REPLACEMENT		0	1,514	1,514	1,404	110	0
2	NHPPI	WL12303	RAWLINS TO LARAMIE I-80	245.92	260.00	14.08	ENVIRONMENTAL TO INCLUDE WILDLIFE CROSSINGS		20	0	20	19	1	0
FY TOTAL:						37.80		\$2,646	\$48,721	\$51,367	\$47,718	\$3,401	\$248	

Transit Projects

Fiscal Year: 2026

Trans Comm Dist	Project		General Location Eligible Provider	Funding Source	Character of Work	Cost \$1,000						
						PE FY	PE	CE & CON	TOTAL	FED	ST	OTH
2	FTA	FT26106	RAWLINS CARBON COUNTY SENIOR SERVICES, INC.	STATE	OPERATING/ADMIN/MAINT		0	90	90	0	61	29
2	FTA	FT26154	BAGGS ASSISTED CARE FACILITY	STATE	OPERATING/ADMIN/MAINT		0	30	30	0	20	10
FY TOTAL:							\$0	\$120	\$120	\$0	\$81	\$39



Wyoming Department of Transportation
 5300 Bishop Blvd
 Cheyenne, WY 82009

**STATE TRANSPORTATION IMPROVEMENT PROJECTS
 ENGINEERING & CONSTRUCTION**

WYCN002B

Carbon County

Aeronautics Projects

Fiscal Year: 2026

Aero Comm Dist	Project	General Location	Character of Work	Cost \$1,000							
				PE FY	PE	CE & CON	TOTAL	FED	ST	OTH	
2	AERO	ADW004A	DIXON		0	505	505	480	13	13	
2	AERO	ADW010A	DIXON	PAVEMENT MAINTENANCE		0	63	63	0	57	6
2	AERO	ADW025A	DIXON	PAVEMENT MAINTENANCE		0	277	277	0	28	249
2	AERO	ARW011A	RAWLINS	PAVEMENT MAINTENANCE		0	360	360	0	324	36
2	AERO	ARW014B	RAWLINS	AIRPORT LIGHTING OR SIGNAGE		0	500	500	450	30	20
2	AERO	ARW014C	RAWLINS	AIRPORT LIGHTING OR SIGNAGE		0	122	122	110	7	5
2	AERO	ARW017A	RAWLINS	AIRPORT EQUIPMENT		0	368	368	350	9	9
2	AERO	ASA014A	SARATOGA	PAVEMENT MAINTENANCE		0	330	330	0	297	33
FY TOTAL:					\$0	\$2,525	\$2,525	\$1,390	\$765	\$371	
Grand Total: 2026, Carbon County					\$2,646	\$51,366	\$54,012	\$49,108	\$4,247	\$658	



Wyoming Department of Transportation
 5300 Bishop Blvd
 Cheyenne, WY 82009

STATE TRANSPORTATION IMPROVEMENT PROJECTS ENGINEERING & CONSTRUCTION

WYCN002B

Carbon County

Transportation Projects

Fiscal Year: 2027

Trans Comm Dist	Project		General Location Detail Location	Begin RM	End RM	Length	Character of Work	Cost \$1,000						
								PE FY	PE	CE & CON	TOTAL	FED	ST	OTH
2	HI-BFP	1115901	RAWLINS STRUCTURE NO. CLV	99.97	99.97	0.00	STRUCTURE REPAIR		10	0	10	9	0	1
2	NHPPI	1804277	RAWLINS TO CRESTON JUNCTION I-80 WESTBOUND LANE	199.00	210.98	11.98	PAVEMENT REHABILITATION TO INCLUDE MILL, OVERLAY AND WEARING COURSE		1,078	11,070	12,147	11,259	889	0
2	NHPPI	1804278	RAWLINS TO LARAMIE I-80 EASTBOUND LANE	216.20	221.20	5.00	PAVEMENT REHABILITATION TO INCLUDE MILL AND OVERLAY		356	4,620	4,976	4,606	370	0
2	NHPPI	1804283	RAWLINS TO LARAMIE I-80 WESTBOUND LANE	216.20	221.20	5.00	PAVEMENT REHABILITATION TO INCLUDE MILL AND OVERLAY		356	4,620	4,976	4,606	370	0
2	NHPP	N211066	MUDDY GAP TO ALCOVA MUDDY GAP NORTH/WY 220	44.77	51.06	6.29	PAVEMENT RESURFACE TO INCLUDE OVERLAY AND CHIP SEAL	2023	227	6,295	6,521	5,893	629	0
FY TOTAL:							28.27		\$2,027	\$26,605	\$28,630	\$26,373	\$2,258	\$1



Wyoming Department of Transportation
 5300 Bishop Blvd
 Cheyenne, WY 82009

**STATE TRANSPORTATION IMPROVEMENT PROJECTS
 ENGINEERING & CONSTRUCTION**

WYCN002B

Carbon County

Aeronautics Projects

Fiscal Year: 2027

Aero Comm Dist	Project		General Location	Character of Work	Cost \$1,000						
					PE FY	PE	CE & CON	TOTAL	FED	ST	OTH
2	AERO	ASA005A	SARATOGA	BUILDINGS		0	500	500	450	30	20
2	AERO	ASA005B	SARATOGA	BUILDINGS		0	244	244	220	15	10
2	AERO	ASA005C	SARATOGA	BUILDINGS		0	450	450	0	270	180
FY TOTAL:						\$0	\$1,194	\$1,194	\$670	\$315	\$210
Grand Total: 2027, Carbon County						\$2,027	\$27,799	\$29,824	\$27,043	\$2,573	\$211



Wyoming Department of Transportation
5300 Bishop Blvd
Cheyenne, WY 82009

STATE TRANSPORTATION IMPROVEMENT PROJECTS ENGINEERING & CONSTRUCTION

WYCN002B

Carbon County

Transportation Projects

Fiscal Year: 2028

Trans Comm Dist	Project		General Location Detail Location	Begin RM	End RM	Length	Character of Work	Cost \$1,000						
								PE FY	PE	CE & CON	TOTAL	FED	ST	OTH
2	STP	0401039	BAGGS TO ENCAMPMENT ENCAMPMENT WEST/WY 70	50.00	56.25	6.25	PAVEMENT REHABILITATION TO INCLUDE MILL, OVERLAY AND CHIP SEAL WITH OVERSHOOT	2020	140	5,745	5,885	5,326	560	0
2	STP	0401040	BAGGS TO ENCAMPMENT WY 70	56.25	57.70	1.45	PAVEMENT REHABILITATION TO INCLUDE MILL, OVERLAY AND CHIP SEAL WITH OVERSHOOT		146	1,905	2,051	1,846	204	0
2	STP- BROS	CN06068	CARBON COUNTY CR 203/BRUSH CREEK ROAD SPANNING NORTH PLATTE RIVER STRUCTURE NO. DML	7.50	7.50	0.00	BRIDGE REPLACEMENT	2022	499	3,107	3,606	3,263	0	343
2	NHPPI	I804281	RAWLINS TO LARAMIE I-80 STRUCTURE NO. AVQ, AVR	272.50	272.50	0.00	STRUCTURE REPAIR		251	3,066	3,317	3,068	249	0
2	NHPPI	I804284	RAWLINS TO LARAMIE I-80 WESTBOUND LANE	233.70	240.00	6.30	PAVEMENT REHABILITATION TO INCLUDE MILL, OVERLAY AND WEARING COURSE		490	6,113	6,603	6,115	487	0
2	NHPPI	I804285	RAWLINS TO LARAMIE I-80 EASTBOUND LANE	233.70	240.00	6.30	PAVEMENT REHABILITATION TO INCLUDE MILL, OVERLAY AND WEARING COURSE		445	6,112	6,558	6,074	484	0
2	STP	N211068	RAWLINS 3RD STREET/US 287 NORTH	0.20	1.92	1.72	PAVEMENT REHABILITATION TO INCLUDE MILL AND OVERLAY		107	3,700	3,807	3,445	362	0



Wyoming Department of Transportation
 5300 Bishop Blvd
 Cheyenne, WY 82009

STATE TRANSPORTATION IMPROVEMENT PROJECTS ENGINEERING & CONSTRUCTION

WYCN002B

Carbon County

Transportation Projects

Fiscal Year: 2028

Trans Comm Dist	Project		General Location Detail Location	Begin RM	End RM	Length	Character of Work	Cost \$1,000						
								PE FY	PE	CE & CON	TOTAL	FED	ST	OTH
2	STP	N211069	RAWLINS 3RD STREET	0.20	0.50	0.30	DRAINAGE REPAIR TO INCLUDE ROADWAY REPAIR, STORM SEWER AND DRAINAGE; PLACE SLOPE TO BURY FAILING BIN WALL	2023	115	1,212	1,327	1,201	126	0
FY TOTAL:						22.32			\$2,193	\$30,960	\$33,154	\$30,338	\$2,472	\$343

Aeronautics Projects

Fiscal Year: 2028

Aero Comm Dist	Project		General Location	Character of Work	Cost \$1,000								
					PE FY	PE	CE & CON	TOTAL	FED	ST	OTH		
2	AERO	ARW020A	RAWLINS	PAVEMENT REHABILITATION		0	2,000	2,000	1,800	120	80		
2	AERO	ASA001A	SARATOGA	ACQUIRE LAND/EASEMENT		0	167	167	150	10	7		
FY TOTAL:							\$0	\$2,167	\$2,167	\$1,950	\$130	\$87	
Grand Total: 2028, Carbon County								\$2,193	\$33,127	\$35,321	\$32,288	\$2,602	\$430



Wyoming Department of Transportation
 5300 Bishop Blvd
 Cheyenne, WY 82009

**STATE TRANSPORTATION IMPROVEMENT PROJECTS
 ENGINEERING & CONSTRUCTION**

WYCN002B

Carbon County

Transportation Projects

Fiscal Year: 2029

Trans Comm Dist	Project		General Location Detail Location	Begin RM	End RM	Length	Character of Work	Cost \$1,000						
								PE FY	PE	CE & CON	TOTAL	FED	ST	OTH
2	HI-BFP	CN06073	CARBON COUNTY TEXAS TRAIL SPANNING NORTH PLATTE RIVER STRUCTURE NO. FKF	100.39	100.39	0.00	BRIDGE REPLACEMENT		360	3,300	3,660	3,660	0	0
2	NHPPI	I804286	RAWLINS I-80 EASTBOUND/WESTBOUND LANES	210.98	216.20	5.22	PAVEMENT REHABILITATION TO INCLUDE CONCRETE PAVEMENT REHAB AND OVERLAY		1,476	19,605	21,081	19,546	1,536	0
2	STP	P221052	SARATOGA TO COLORADO SKYLINE SECTION/WY 230	110.13	116.90	6.77	PAVEMENT REHABILITATION TO INCLUDE MILL, OVERLAY AND CHIP SEAL WITH OVERSHOOT	2021	149	7,114	7,263	6,572	691	0
FY TOTAL:						11.99			\$1,985	\$30,019	\$32,004	\$29,778	\$2,227	\$0
Grand Total: 2029, Carbon County									\$1,985	\$30,019	\$32,004	\$29,778	\$2,227	\$0



Wyoming Department of Transportation
5300 Bishop Blvd
Cheyenne, WY 82009

STATE TRANSPORTATION IMPROVEMENT PROJECTS ENGINEERING & CONSTRUCTION

WYCN002B

Carbon County

Transportation Projects

Fiscal Year: 2030

Trans Comm Dist	Project		General Location Detail Location	Begin RM	End RM	Length	Character of Work	Cost \$1,000						
								PE FY	PE	CE & CON	TOTAL	FED	ST	OTH
2	STP- BROS	CN06074	CARBON COUNTY COUNTY ROAD 680/BAGGOT ROCK ROAD SPANNING ENCAMPMENT RIVER STRUCTURE NO. DMT	1.17	1.17	0.00	BRIDGE REPLACEMENT	2026	10	0	10	9	0	1
2	NHPP-SF	N211064	RAWLINS TO MUDDY GAP NORTH OF RAWLINS/US 287/WY 789	2.24	11.81	9.57	SNOW FENCE	2020	193	2,127	2,320	2,100	221	0
2	STP	P221056	SARATOGA TO RIVERSIDE WY 130	20.60	22.29	1.69	PAVEMENT REHABILITATION TO INCLUDE MILL, OVERLAY AND ADA		269	3,632	3,901	3,521	380	0
2	STP	P221057	SARATOGA TO RIVERSIDE WY 130	22.29	28.06	5.77	PAVEMENT REHABILITATION TO INCLUDE MILL AND OVERLAY		314	4,631	4,945	4,475	470	0
FY TOTAL:							17.03		\$786	\$10,390	\$11,176	\$10,105	\$1,071	\$1

Aeronautics Projects

Fiscal Year: 2030

Aero Comm Dist	Project		General Location	Character of Work	Cost \$1,000								
					PE FY	PE	CE & CON	TOTAL	FED	ST	OTH		
2	AERO	ADW022A	DIXON	PAVEMENT MAINTENANCE		0	221	221	0	199	22		
2	AERO	ARW018A	RAWLINS	PAVEMENT MAINTENANCE		0	380	380	0	342	38		
2	AERO	ASA027A	SARATOGA	BUILDINGS		0	500	500	450	30	20		
2	AERO	ASA030A	SARATOGA	PAVEMENT MAINTENANCE		0	364	364	0	328	36		
FY TOTAL:								\$0	\$1,465	\$1,465	\$450	\$899	\$116
Grand Total: 2030, Carbon County								\$786	\$11,855	\$12,641	\$10,555	\$1,970	\$117



Wyoming Department of Transportation
 5300 Bishop Blvd
 Cheyenne, WY 82009

STATE TRANSPORTATION IMPROVEMENT PROJECTS ENGINEERING & CONSTRUCTION

WYCN002B

Carbon County

Transportation Projects

Fiscal Year: 2031

Trans Comm Dist	Project		General Location Detail Location	Begin RM	End RM	Length	Character of Work	Cost \$1,000						
								PE FY	PE	CE & CON	TOTAL	FED	ST	OTH
2	STP-BR	B301002	TRANSPORTATION DISTRICT 1 STRUCTURE NO. CMW	0.15	0.15	0.00	STRUCTURE REPAIR		66	1,271	1,337	1,210	127	0
2	STP- BROS	CN06075	CARBON COUNTY COUNTY ROAD 3/ELK MOUNTAIN MEDICINE BOW ROAD SPANNING MEDICINE BOW RIVER STRUCTURE NO. DNC	7.64	7.64	0.00	BRIDGE REPLACEMENT	2026	10	0	10	9	0	1
2	STP	P231027	HANNA TO MEDICINE BOW US 30	264.00	271.54	7.54	PAVEMENT REHABILITATION TO INCLUDE MILL, OVERLAY AND CHIP SEAL WITH OVERSHOOT	2024	359	5,837	6,197	5,607	589	0
FY TOTAL:						7.54			\$435	\$7,108	\$7,544	\$6,826	\$716	\$1

Aeronautics Projects

Fiscal Year: 2031

Aero Comm Dist	Project		General Location	Character of Work	Cost \$1,000								
					PE FY	PE	CE & CON	TOTAL	FED	ST	OTH		
2	AERO	ADW016A	DIXON	PAVEMENT RECONSTRUCTION		0	333	333	300	17	17		
FY TOTAL:							\$0	\$333	\$333	\$300	\$17	\$17	
Grand Total: 2031, Carbon County								\$435	\$7,441	\$7,877	\$7,126	\$733	\$18



Wyoming Department of Transportation
 5300 Bishop Blvd
 Cheyenne, WY 82009

STATE TRANSPORTATION IMPROVEMENT PROJECTS ENGINEERING & CONSTRUCTION

WYCN002B

Carbon County

Transportation Projects

Fiscal Year: Future Year

Trans Comm Dist	Project		General Location Detail Location	Begin RM	End RM	Length	Character of Work	Cost \$1,000						
								PE FY	PE	CE & CON	TOTAL	FED	ST	OTH
2	STP	0105015	MCFADDEN TO ROCK RIVER CARBON COUNTY SECTION/WY 13	8.04	17.30	9.26	PAVEMENT REHABILITATION TO INCLUDE MILL, OVERLAY AND CHIP SEAL WITH OVERSHOOT	2021	124	7,796	7,920	7,167	753	0
2	SCP	B189103	TRANSPORTATION DISTRICT 1 VARIOUS LOCATIONS/I-80	243.80	277.90	34.10	SNOW FENCE	2018	50	3,408	3,458	0	3,458	0
2	NHPP	N211065	RAWLINS TO MUDDY GAP BELL SPRINGS/US 287	12.55	22.89	10.34	PAVEMENT REHABILITATION TO INCLUDE MILL, OVERLAY AND CHIP SEAL WITH OVERSHOOT	2020	325	13,808	14,133	12,789	1,344	0
2	STP	P221053	SARATOGA TO COLORADO BIG CREEK SECTION/WY 230	116.90	126.92	10.02	PAVEMENT REHABILITATION TO INCLUDE MILL, OVERLAY AND CHIP SEAL WITH OVERSHOOT	2023	102	9,890	9,992	9,033	959	0
FY TOTAL:							63.72		\$601	\$34,902	\$35,503	\$28,989	\$6,514	\$0
Grand Total: Future Year, Carbon County									\$601	\$34,902	\$35,503	\$28,989	\$6,514	\$0



Wyoming Department of Transportation
 5300 Bishop Blvd
 Cheyenne, WY 82009

**STATE TRANSPORTATION IMPROVEMENT PROJECTS
 COUNTY TOTAL**

WYCN00102SUM

County		Transportation Projects	Transit Projects	Aeronautics Projects	Total
Carbon	2026	\$51,367,000	\$120,000	\$2,525,000	\$54,012,000
	2027	\$28,630,000	\$0	\$1,194,000	\$29,824,000
	2028	\$33,154,000	\$0	\$2,167,000	\$35,321,000
	2029	\$32,004,000	\$0	\$0	\$32,004,000
	2030	\$11,176,000	\$0	\$1,465,000	\$12,641,000
	2031	\$7,544,000	\$0	\$333,000	\$7,877,000
	Future Year	\$35,503,000	\$0	\$0	\$35,503,000
	Total	\$199,378,000	\$120,000	\$7,684,000	\$207,182,000