
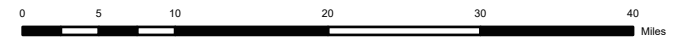
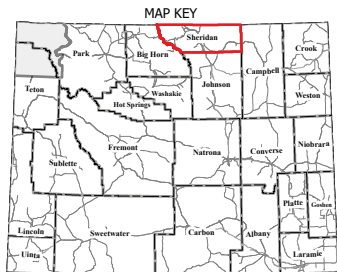
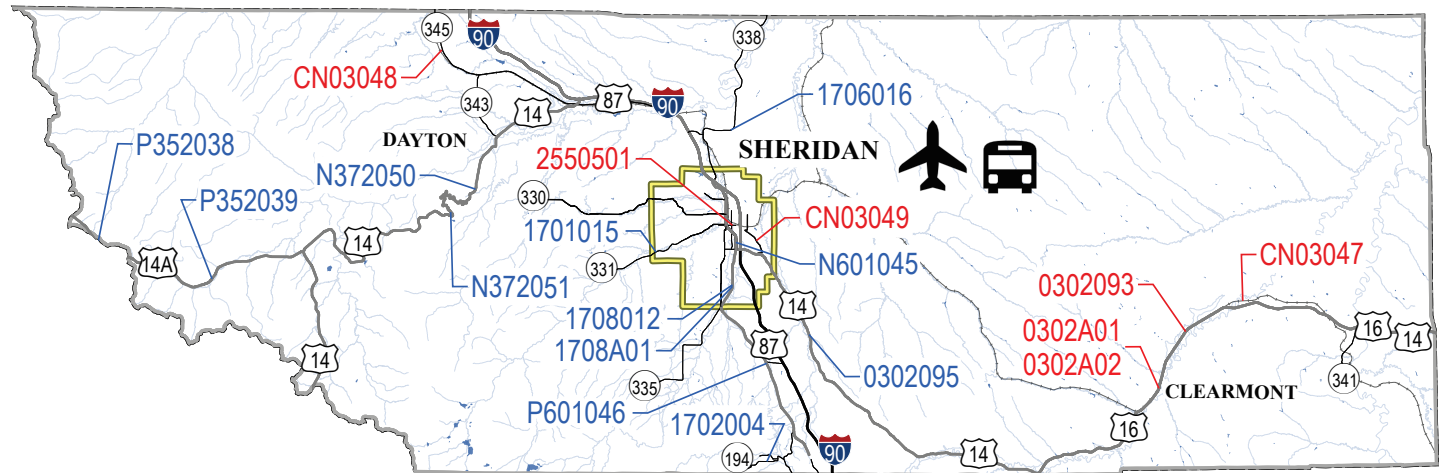


SHERIDAN COUNTY



Key to FY 2026 STIP

- 2026
- FUTURE
-  AERONAUTICS
-  TRANSIT
-  URBAN BOUNDARY



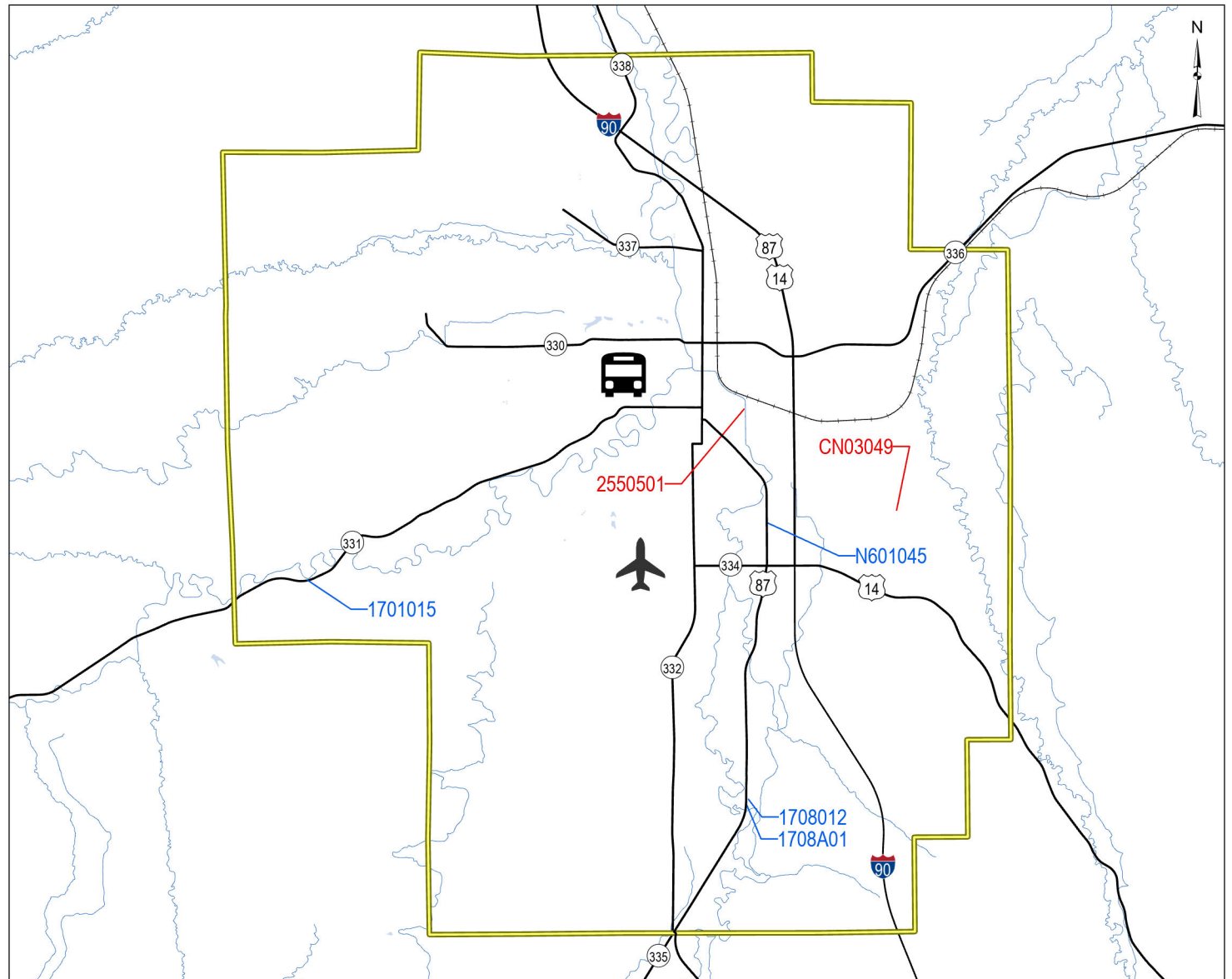
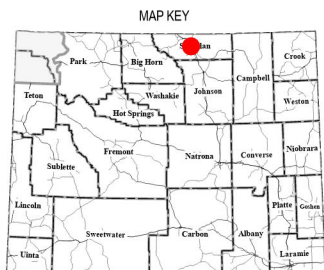
SHERIDAN

INSET

SHERIDAN COUNTY

Key to FY 2026 STIP

- 2026
- FUTURE
-  AERONAUTICS
-  TRANSIT
-  URBAN BOUNDARY





Wyoming Department of Transportation
5300 Bishop Blvd
Cheyenne, WY 82009

STATE TRANSPORTATION IMPROVEMENT PROJECTS ENGINEERING & CONSTRUCTION

WYCN002B

Sheridan County

Transportation Projects

Fiscal Year: 2026

Trans Comm Dist	Project		General Location Detail Location	Begin RM	End RM	Length	Character of Work	Cost \$1,000						
								PE FY	PE	CE & CON	TOTAL	FED	ST	OTH
4	SCP-TC	0302093	CLEARMONT TO ARVADA US 14/16 STRUCTURE NO. BTG	38.10	46.95	8.85	PAVEMENT REHABILITATION TO INCLUDE MILL AND OVERLAY	2021	291	4,551	4,842	263	4,579	0
4	ARSCT	0302A01	CLEARMONT US 14	38.10	38.64	0.54	UTILITY TO INCLUDE ADJUSTMENT OF UNDERGROUND UTILITY BOXES AND CONDUIT CONFLICTING WITH ADA RAMP IMPROVEMENTS		2	17	20	0	0	19
4	ARSCT	0302A02	CLEARMONT US 14/16	38.10	38.64	0.54	UTILITY TO INCLUDE WATERLINE SYSTEM REPLACEMENT		48	1,015	1,063	0	0	1,064
4	HI-BFP	2550501	SHERIDAN STRUCTURE NO. EAY	100.43	100.43	0.00	BRIDGE REPLACEMENT		135	1,944	2,079	2,079	0	0
4	RHC-P	CN03047	SHERIDAN COUNTY BNSF RRMP 651.99 DOT NO. 098768T	0.34	0.34	0.00	RAILROAD TO INCLUDE CIRCUITRY AT CROSSING		0	476	476	428	0	48
4	HI-BFP	CN03048	SHERIDAN COUNTY STRUCTURE NO. ECY	0.05	0.05	0.00	BRIDGE REPLACEMENT		200	2,405	2,605	2,605	0	0
4	STP-CR	CN03049	SHERIDAN COUNTY COUNTY ROAD 139/EASTRIDGE ROAD	0.88	3.51	2.63	RECONSTRUCTION TO INCLUDE REALIGNMENT, WIDEN AND OVERLAY		295	2,771	3,066	2,774	0	292



Wyoming Department of Transportation
5300 Bishop Blvd
Cheyenne, WY 82009

STATE TRANSPORTATION IMPROVEMENT PROJECTS ENGINEERING & CONSTRUCTION

WYCN002B

Sheridan County

Transportation Projects

Fiscal Year: 2026

Trans Comm Dist	Project	General Location Detail Location	Begin RM	End RM	Length	Character of Work	Cost \$1,000							
							PE FY	PE	CE & CON	TOTAL	FED	ST	OTH	
FY TOTAL:							12.56		\$971	\$13,179	\$14,151	\$8,149	\$4,579	\$1,423

Transit Projects

Fiscal Year: 2026

Trans Comm Dist	Project	General Location Eligible Provider	Funding Source	Character of Work	Cost \$1,000								
					PE FY	PE	CE & CON	TOTAL	FED	ST	OTH		
4	FTA	FT26428	SHERIDAN REHABILITATION ENTERPRISES OF NORTH EASTERN WYOMING	STATE	OPERATING/ADMIN/MAINT		0	101	101	0	68	32	
4	FTA	FT26429	SHERIDAN SENIOR CITIZENS COUNCIL	5311	OPERATING/ADMIN/MAINT		0	928	928	618	0	310	
4	FTA	FT26456	SHERIDAN SENIOR CITIZENS COUNCIL	5339	PURCHASE MEDIUM-DUTY BUS		0	160	160	24	0	136	
4	FTA	FT26457	SHERIDAN SENIOR CITIZENS COUNCIL	5339	PURCHASE MEDIUM-DUTY BUS		0	160	160	24	0	136	
FY TOTAL:								\$0	\$1,349	\$1,349	\$666	\$68	\$614

Aeronautics Projects

Fiscal Year: 2026

Aero Comm Dist	Project	General Location	Character of Work	Cost \$1,000									
				PE FY	PE	CE & CON	TOTAL	FED	ST	OTH			
5	AERO	ASH017A	SHERIDAN	AIRPORT EQUIPMENT		0	853	853	800	32	21		
5	AERO	ASH032A	SHERIDAN	AIRPORT EQUIPMENT		0	1,368	1,368	1,300	34	34		
FY TOTAL:								\$0	\$2,221	\$2,221	\$2,100	\$66	\$55
Grand Total: 2026, Sheridan County								\$971	\$16,749	\$17,721	\$10,915	\$4,713	\$2,092



Wyoming Department of Transportation
5300 Bishop Blvd
Cheyenne, WY 82009

STATE TRANSPORTATION IMPROVEMENT PROJECTS ENGINEERING & CONSTRUCTION

WYCN002B

Sheridan County

Transportation Projects

Fiscal Year: 2027

Trans Comm Dist	Project		General Location Detail Location	Begin RM	End RM	Length	Character of Work	Cost \$1,000									
								PE FY	PE	CE & CON	TOTAL	FED	ST	OTH			
4	SCP-TC	0302095	SHERIDAN TO UCROSS US 14	1.40	14.29	12.89	PAVEMENT REHABILITATION TO INCLUDE MILL, OVERLAY AND LEFT TURN LANE	2021	587	6,835	7,422	531	6,891	0			
4	STP	P352038	BURGESS JUNCTION TO LOVELL DISTRICT BOUNDARY/US 14A	80.45	91.90	11.45	PAVEMENT RESURFACE TO INCLUDE OVERLAY AND CHIP SEAL	2020	88	4,558	4,646	4,204	442	0			
4	STP	P352039	BURGESS JUNCTION TO LOVELL US 14A	85.67	98.51	12.84	PAVEMENT REHABILITATION TO INCLUDE GRADE, MILL AND BITUMINOUS PAVEMENT	2020	213	0	213	193	20	0			
4	STP	W332003	SHERIDAN INTERSECTION OF BIG HORN AVENUE/BRUNDAGE LANE	1.62	1.62	0.00	TRAFFIC SYSTEMS TO INCLUDE INSTALLATION OF NEW TRAFFIC SIGNAL AND ADA UPGRADES		105	1,045	1,150	570	10	570			
FY TOTAL:									37.18			\$993	\$12,438	\$13,431	\$5,498	\$7,363	\$570

Aeronautics Projects

Fiscal Year: 2027

Aero Comm Dist	Project		General Location	Character of Work	Cost \$1,000										
					PE FY	PE	CE & CON	TOTAL	FED	ST	OTH				
5	AERO	ASH006B	SHERIDAN	PAVEMENT REHABILITATION		0	188	188	0	150	38				
5	AERO	ASH014A	SHERIDAN	PLANNING STUDY		0	533	533	500	20	13				
5	AERO	ASH035A	SHERIDAN	PAVEMENT MAINTENANCE		0	804	804	0	724	80				
FY TOTAL:										\$0	\$1,525	\$1,525	\$500	\$894	\$131
Grand Total: 2027, Sheridan County										\$993	\$13,963	\$14,956	\$5,998	\$8,257	\$701



Wyoming Department of Transportation
5300 Bishop Blvd
Cheyenne, WY 82009

STATE TRANSPORTATION IMPROVEMENT PROJECTS ENGINEERING & CONSTRUCTION

WYCN002B

Sheridan County

Transportation Projects

Fiscal Year: 2028

Trans Comm Dist	Project		General Location Detail Location	Begin RM	End RM	Length	Character of Work	Cost \$1,000						
								PE FY	PE	CE & CON	TOTAL	FED	ST	OTH
4	STP	1706016	SHERIDAN TO MONTANA DECKER ROAD/WY 14	1.71	8.26	6.55	PAVEMENT REHABILITATION TO INCLUDE MILL AND OVERLAY	2023	380	4,158	4,538	4,098	441	0
4	NHPP	N601045	SHERIDAN COFFEEN AVENUE/JCT WY 332/COLLEGE	23.51	25.94	2.43	PAVEMENT REHABILITATION TO INCLUDE MILL, OVERLAY AND ADA	2023	559	12,696	13,255	11,995	1,261	0
FY TOTAL:						8.98			\$939	\$16,854	\$17,793	\$16,093	\$1,702	\$0

Aeronautics Projects

Fiscal Year: 2028

Aero Comm Dist	Project		General Location	Character of Work	Cost \$1,000								
					PE FY	PE	CE & CON	TOTAL	FED	ST	OTH		
5	AERO	ASH006A	SHERIDAN	PAVEMENT REHABILITATION		0	2,188	2,188	0	1,750	438		
5	AERO	ASH040A	SHERIDAN	PAVEMENT EXPANSION		0	1,493	1,493	1,400	56	37		
FY TOTAL:							\$0	\$3,681	\$3,681	\$1,400	\$1,806	\$475	
Grand Total: 2028, Sheridan County								\$939	\$20,535	\$21,474	\$17,493	\$3,508	\$475

Transportation Projects

Fiscal Year: 2029

Trans Comm Dist	Project		General Location Detail Location	Begin RM	End RM	Length	Character of Work	Cost \$1,000						
								PE FY	PE	CE & CON	TOTAL	FED	ST	OTH
4	STP	1702004	STORY FISH HATCHERY/WY 194	0.00	2.81	2.81	PAVEMENT REHABILITATION TO INCLUDE MILL AND OVERLAY	2022	56	2,076	2,132	1,929	203	0
FY TOTAL:						2.81			\$56	\$2,076	\$2,132	\$1,929	\$203	\$0



Wyoming Department of Transportation
5300 Bishop Blvd
Cheyenne, WY 82009

STATE TRANSPORTATION IMPROVEMENT PROJECTS ENGINEERING & CONSTRUCTION

WYCN002B

Sheridan County

Aeronautics Projects

Fiscal Year: 2029

Aero Comm Dist	Project		General Location	Character of Work	Cost \$1,000							
					PE FY	PE	CE & CON	TOTAL	FED	ST	OTH	
5	AERO	ASH037A	SHERIDAN	PAVEMENT REHABILITATION		0	3,200	3,200	3,000	120	80	
FY TOTAL:							\$0	\$3,200	\$3,200	\$3,000	\$120	\$80
Grand Total: 2029, Sheridan County							\$56	\$5,276	\$5,332	\$4,929	\$323	\$80

Transportation Projects

Fiscal Year: 2030

Trans Comm Dist	Project		General Location Detail Location	Begin RM	End RM	Length	Character of Work	Cost \$1,000						
								PE FY	PE	CE & CON	TOTAL	FED	ST	OTH
4	NHPP	N372051	BURGESS JUNCTION TO DAYTON STEAMBOAT POINT/US 14	71.02	77.32	6.30	PAVEMENT REHABILITATION TO INCLUDE MILL, OVERLAY AND CHIP SEAL	2021	222	6,741	6,963	6,301	662	0
4	STP	P601046	SHERIDAN TO BANNER US 87	29.17	38.90	9.73	PAVEMENT REHABILITATION TO INCLUDE MILL, LEVEL AND OVERLAY		448	7,711	8,159	7,383	776	0
FY TOTAL:						16.03			\$670	\$14,452	\$15,122	\$13,684	\$1,438	\$0
Grand Total: 2030, Sheridan County									\$670	\$14,452	\$15,122	\$13,684	\$1,438	\$0



Wyoming Department of Transportation
5300 Bishop Blvd
Cheyenne, WY 82009

STATE TRANSPORTATION IMPROVEMENT PROJECTS ENGINEERING & CONSTRUCTION

WYCN002B

Sheridan County

Transportation Projects

Fiscal Year: 2031

Trans Comm Dist	Project		General Location Detail Location	Begin RM	End RM	Length	Character of Work	Cost \$1,000							
								PE FY	PE	CE & CON	TOTAL	FED	ST	OTH	
4	STP	1701015	SHERIDAN TO BECKTON WY 331	0.82	9.92	9.10	PAVEMENT REHABILITATION TO INCLUDE MILL, LEVEL AND OVERLAY		471	8,524	8,995	8,140	855	0	
FY TOTAL:									9.10	\$471	\$8,524	\$8,995	\$8,140	\$855	\$0
Grand Total: 2031, Sheridan County										\$471	\$8,524	\$8,995	\$8,140	\$855	\$0

Transportation Projects

Fiscal Year: Future Year

Trans Comm Dist	Project		General Location Detail Location	Begin RM	End RM	Length	Character of Work	Cost \$1,000							
								PE FY	PE	CE & CON	TOTAL	FED	ST	OTH	
4	STP	1708012	SHERIDAN COFFEEN AVENUE/US 87/WY 335 STRUCTURE NO. CZY	25.94	29.11	3.17	RECONSTRUCTION TO INCLUDE WIDEN AND OVERLAY	2013	800	43,203	44,003	39,819	4,185	0	
4	ARSCT	1708A01	SHERIDAN COFFEEN AVENUE/US 87/WY 335	25.94	29.31	3.37	COMMUNITY DEVELOPMENT TO INCLUDE CONSTRUCTION OF PATHWAY, LIGHTING, LANDSCAPING AND IRRIGATION SYSTEM		174	1,918	2,092	0	0	2,093	
4	NHPP	N372050	DAYTON MAIN STREET/WY 343	77.32	82.77	5.45	PAVEMENT REHABILITATION TO INCLUDE MILL AND OVERLAY	2020	133	6,547	6,680	6,046	635	0	
FY TOTAL:									11.99	\$1,107	\$51,668	\$52,775	\$45,865	\$4,820	\$2,093
Grand Total: Future Year, Sheridan County										\$1,107	\$51,668	\$52,775	\$45,865	\$4,820	\$2,093



Wyoming Department of Transportation
5300 Bishop Blvd
Cheyenne, WY 82009

STATE TRANSPORTATION IMPROVEMENT PROJECTS COUNTY TOTAL

WYCN00102SUM

County		Transportation Projects	Transit Projects	Aeronautics Projects	Total
Sheridan	2026	\$14,151,000	\$1,349,000	\$2,221,000	\$17,721,000
	2027	\$13,431,000	\$0	\$1,525,000	\$14,956,000
	2028	\$17,793,000	\$0	\$3,681,000	\$21,474,000
	2029	\$2,132,000	\$0	\$3,200,000	\$5,332,000
	2030	\$15,122,000	\$0	\$0	\$15,122,000
	2031	\$8,995,000	\$0	\$0	\$8,995,000
	Future Year	\$52,775,000	\$0	\$0	\$52,775,000
Total		\$124,399,000	\$1,349,000	\$10,627,000	\$136,375,000